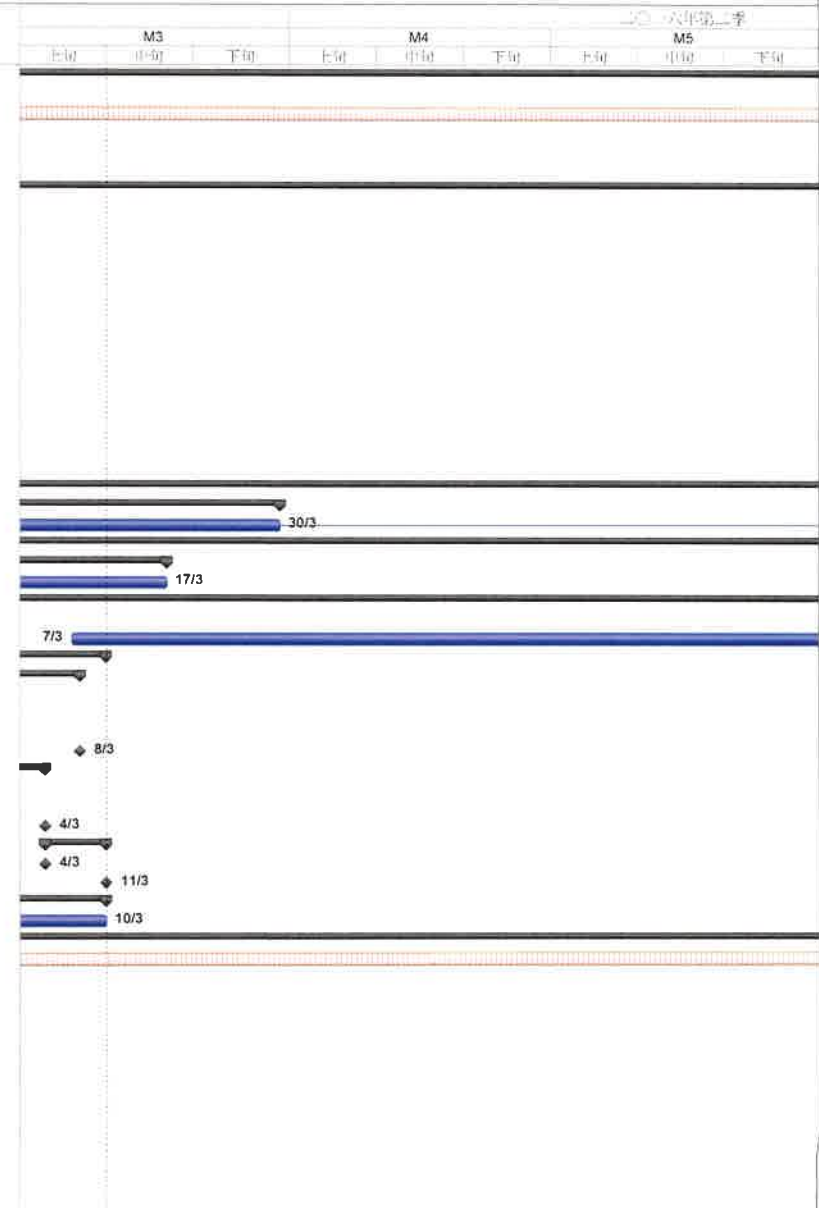


3 months construction program

ID	Item	Task Name	Duration	Start	Finish	
1		1 Key Date	486 days	2016/1/1	2017/4/30	
2	1.1	Commencement date	0 days	2016/1/1	2016/1/1	
3	1.2	Duration of works	486 days	2016/1/1	2017/4/30	
4	1.3	Possession date	0 days	2016/1/1	2016/1/1	
5	1.4	Completion of the Contract	0 days	2017/4/30	2017/4/30	
6						
7		2 Total Contract Period	486 days	2016/1/1	2017/5/1	
8						
9	2.1	Preliminaries	37 days	2016/1/1	2016/2/6	
10	2.1.1	Coordination with utility companies	14 days	2016/1/1	2016/1/14	
11	2.1.2	Condition survey	20 days	2016/1/1	2016/1/20	
12	2.1.3	Notification of commencement of works to Labour Department	7 days	2016/1/1	2016/1/7	
13	2.1.4	Notification of air pollution control for commencement of works to EPD	7 days	2016/1/1	2016/1/7	
14	2.1.5	Application of water discharge licence from EPD	7 days	2016/1/1	2016/1/7	
15	2.1.6	Application for billing account for disposal of construction waste from EPD	7 days	2016/1/1	2016/1/7	
16	2.1.7	CCTV for existing underground drainage pipe around site boundary	21 days	2016/1/1	2016/1/21	
17	2.1.8	Utility detection for existing underground cables	20 days	2016/1/1	2016/1/20	
18	2.1.9	Site clearance	21 days	2016/1/1	2016/1/21	
19	2.1.10	Erection of contractor's site office	21 days	2016/1/1	2016/1/21	
20	2.1.11	Installation of monitoring checkpoints	20 days	2016/1/18	2016/2/6	
21	2.1.12	Submission of BA10 for ELS & foundation works	0 days	2016/1/1	2016/1/1	
22						
23	2.2	Section A	305 days	2016/1/1	2016/10/31	
24	2.2.1	Hoarding	90 days	2016/1/1	2016/3/30	
25	2.2.1.1	Erection of Hoarding	90 days	2016/1/1	2016/3/30	
26	2.2.2	Foundation Works at Unit L10	295 days	2016/1/1	2016/10/31	
27	2.2.2.1	Bored Pile - Temporary Steel Casing	56 days	2016/1/22	2016/3/17	
28	2.2.2.1.1	Duration for delivery temporary steel casing	56 days	2016/1/22	2016/3/17	
29	2.2.2.2	Bored Pile - Permanent Casing & Double Wall Liner	172 days	2016/2/24	2016/8/13	
30	2.2.2.2.1	Testing for double wall liner	0 days	2016/2/24	2016/2/24	
31	2.2.2.2.2	Duration for delivery permanent casing & double wall liner	160 days	2016/3/7	2016/8/13	
32	2.2.2.3	Bored Pile - Plant Mobilization	56 days	2016/1/15	2016/3/11	
33	2.2.2.3.1	Crawler Crane	53 days	2016/1/15	2016/3/8	
34	2.2.2.3.1.1	1st & 2nd set	0 days	2016/1/15	2016/1/15	
35	2.2.2.3.1.2	3rd set	0 days	2016/2/4	2016/2/4	
36	2.2.2.3.1.3	4th & 5th set	0 days	2016/2/19	2016/2/19	
37	2.2.2.3.1.4	6th set	0 days	2016/3/8	2016/3/8	
38	2.2.2.3.2	Oscillator	35 days	2016/1/29	2016/3/4	
39	2.2.2.3.2.1	1st & 2nd set	0 days	2016/1/29	2016/1/29	
40	2.2.2.3.2.2	3rd & 4th set	0 days	2016/2/24	2016/2/24	
41	2.2.2.3.2.3	5th set	0 days	2016/3/4	2016/3/4	
42	2.2.2.3.3	RCD	7 days	2016/3/4	2016/3/11	
43	2.2.2.3.3.1	1st & 2nd set	0 days	2016/3/4	2016/3/4	
44	2.2.2.3.3.2	3rd, 4th & 5th set	0 days	2016/3/11	2016/3/11	
45	2.2.2.4	Predrilling	60 days	2016/1/11	2016/3/10	
46	2.2.2.4.1	Predrilling works (38 nos.)	60 days	2016/1/11	2016/3/10	
47	2.2.2.5	Bored Pile Construction	263 days	2016/2/12	2016/10/31	
48	2.2.2.5.1	Bored pile construction (38 piles)	215 days	2016/2/12	2016/9/13	
49	2.2.2.5.2	Interface & sonic test	30 days	2016/8/25	2016/9/23	
50	2.2.2.5.3	Prepare & submit as-built record plan	7 days	2016/9/17	2016/9/23	
51	2.2.2.5.4	Submission of BA14	1 day	2016/9/23	2016/9/23	
52	2.2.2.5.5	Allow 14 days for selection of pile for concrete full core test	14 days	2016/9/24	2016/10/7	
53	2.2.2.5.6	Concrete full core test	14 days	2016/10/8	2016/10/21	
54	2.2.2.5.7	Compression test for concrete core	7 days	2016/10/22	2016/10/28	
55	2.2.2.5.8	Submission of log report & compression test report	4 days	2016/10/28	2016/10/31	
56	2.2.2.6	Sheet Pile	92 days	2016/7/22	2016/10/21	
57	2.2.2.6.1	Plant mobilization	0 days	2016/7/31	2016/7/31	
58	2.2.2.6.2	Delivery sheet pile material	0 days	2016/7/22	2016/7/22	
59	2.2.2.6.3	Installation of sheet pile - Type A (approx. 212 piles)	50 days	2016/8/1	2016/9/19	
60	2.2.2.6.4	Installation of sheet pile - Type B (approx. 100 piles)	24 days	2016/9/20	2016/10/13	
61	2.2.2.6.5	Prepare & submit as-built record plan	7 days	2016/10/14	2016/10/20	

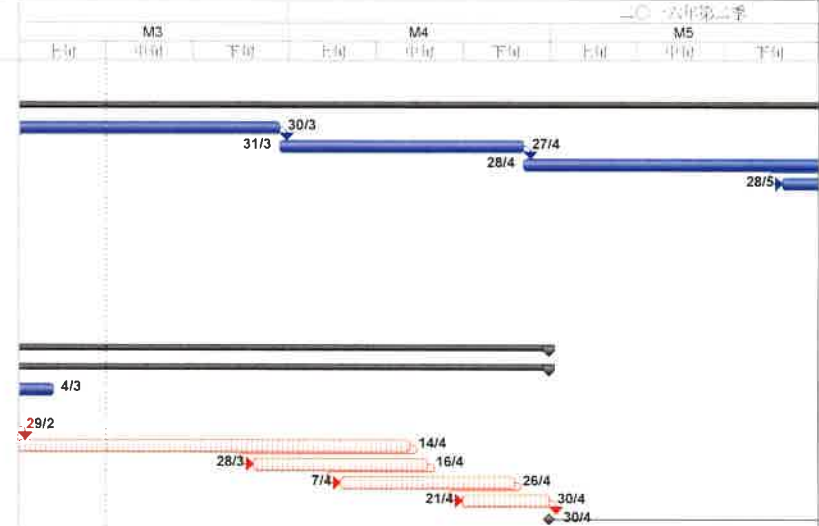


3-months program

Task Critical Task Milestone Summary

3 months construction program

ID	Item	Task Name	Duration	Start	Finish	
62	2.2.2.6.6	Submission of BA14	1 day	2016/10/21	2016/10/21	
63	2.2.2.7	Completion of foundation works at Unit L10	0 days	2016/10/31	2016/10/31	
64	2.2.3	New Site Facilities	198 days	2016/1/1	2016/7/16	
65	2.2.3.1	Submission for design of site office A	90 days	2016/1/1	2016/3/30	
66	2.2.3.2	Approval for design of site office A	28 days	2016/3/31	2016/4/27	
67	2.2.3.3	Erection of site office A	50 days	2016/4/28	2016/6/16	
68	2.2.3.4	Erection of wasing facilities with shelter & container shower facilities	20 days	2016/5/28	2016/6/16	
69	2.2.3.5	Installation of earthing	30 days	2016/6/7	2016/7/6	
70	2.2.3.6	Installation of portable water pipes	30 days	2016/6/17	2016/7/16	
71	2.2.3.7	Installation of sewage drain pipes	30 days	2016/6/17	2016/7/16	
72	2.2.3.8	Completion of new site facilities	0 days	2016/7/16	2016/7/16	
73	2.2.4	Completion of section A	0 days	2016/10/31	2016/10/31	
74	2.2.5	Demobilization of plants	0 days	2016/10/21	2016/10/21	
75	2.3	Handover of site works area for Section A	0 days	2016/11/1	2016/11/1	
76						
77	2.4	Section B	121 days	2016/1/1	2016/4/30	
78	2.4.1	Ground Treatment Works	121 days	2016/1/1	2016/4/30	
79	2.4.1.1	Verification GI works (approx. 20 nos.)	14 days	2016/2/20	2016/3/4	
80	2.4.1.2	Plant mobilization	55 days	2016/1/1	2016/2/24	
81	2.4.1.3	Trial installation of band drain	5 days	2016/2/25	2016/2/29	
82	2.4.1.4	Installation of band drain (approx. 2477 nos.)	45 days	2016/3/1	2016/4/14	
83	2.4.1.5	Installation of steel plate & geotextile on existing U-channel	20 days	2016/3/28	2016/4/16	
84	2.4.1.6	Filling of surcharge (approx. 21000 m3)	20 days	2016/4/7	2016/4/26	
85	2.4.1.7	Installation of ground settlement markers	10 days	2016/4/21	2016/4/30	
86	2.4.2	Completion of section B	0 days	2016/4/30	2016/4/30	
87						
88	2.5	Section C	229 days	2016/9/14	2017/4/30	
89	2.5.1	Hoarding	45 days	2016/11/1	2016/12/15	
90	2.5.1.1	Erection of Hoarding	45 days	2016/11/1	2016/12/15	
91	2.5.2	Foundation Works at 275kV Substation Building	229 days	2016/9/14	2017/4/30	
92	2.5.2.1	Early start milestone	0 days	2016/10/6	2016/10/6	
93	2.5.2.2	Bored Pile - Temporary Steel Casing	7 days	2016/9/14	2016/9/20	
94	2.5.2.2.1	Duration for delivery temporary steel casing	7 days	2016/9/14	2016/9/20	
95	2.5.2.3	Bored Pile - Permanent Casing & Double Wall Liner	120 days	2016/9/25	2017/1/23	
96	2.5.2.3.1	Duration for delivery permanent casing & double wall liner	120 days	2016/9/26	2017/1/23	
97	2.5.2.4	Bored Pile - Plant Mobilization	14 days	2016/10/1	2016/10/15	
98	2.5.2.4.1	Crawler Crane	0 days	2016/10/1	2016/10/1	
99	2.5.2.4.1.1	1st & 2nd set	0 days	2016/10/1	2016/10/1	
100	2.5.2.4.2	Oscillator	0 days	2016/10/5	2016/10/5	
101	2.5.2.4.2.1	1st & 2nd set	0 days	2016/10/5	2016/10/5	
102	2.5.2.4.3	RCD	0 days	2016/10/15	2016/10/15	
103	2.5.2.4.3.1	1st & 2nd set	0 days	2016/10/15	2016/10/15	
104	2.5.2.5	Predrilling	21 days	2016/11/1	2016/11/21	
105	2.5.2.5.1	Predrilling works (10 nos.)	21 days	2016/11/1	2016/11/21	
106	2.5.2.6	Bored Pile	181 days	2016/11/1	2017/4/30	
107	2.5.2.6.1	Installation of monitoring checkpoints	7 days	2016/11/1	2016/11/7	
108	2.5.2.6.2	Bored pile construction (10 piles)	125 days	2016/11/10	2017/3/14	
109	2.5.2.6.3	Interface & sonic test	20 days	2017/3/9	2017/3/28	
110	2.5.2.6.4	Prepare & submit as-built record plan	7 days	2017/3/22	2017/3/28	
111	2.5.2.6.5	Submission of BA14	1 day	2017/3/28	2017/3/28	
112	2.5.2.6.6	Allow 14 days for selection of pile for concrete full core test	14 days	2017/3/29	2017/4/11	
113	2.5.2.6.7	Concrete full core test	10 days	2017/4/12	2017/4/21	
114	2.5.2.6.8	Compression test for concrete core	7 days	2017/4/21	2017/4/27	
115	2.5.2.6.9	Submission of log report & compression test report	4 days	2017/4/27	2017/4/30	
116	2.5.2.7	Completion of foundation works at 275kV substation building	0 days	2017/4/30	2017/4/30	
117	2.5.3	Trial Pile	212 days	2016/10/1	2017/4/30	
118	2.5.3.1	Early start milestone	0 days	2016/10/1	2016/10/1	
119	2.5.3.2	Submission of BA10 for trial pile	7 days	2016/11/1	2016/11/7	
120	2.5.3.3	Predrilling	28 days	2016/11/8	2016/12/5	
121	2.5.3.3.1	Predrilling works (3 nos.)	28 days	2016/11/8	2016/12/5	



3-months program

Task Critical Task Milestone Summary

3 months construction program

ID	Item	Task Name	Duration	Start	Finish	M3			M4			M5				
						上旬	中旬	下旬	上旬	中旬	下旬	上旬	中旬	下旬		
122	2.5.3.4	Ground Instrumentation	24 days	2016/11/22	2016/12/15											
123	2.5.3.4.1	Installation of magnetic extensometer in predrilled hole (3 nos.)	16 days	2016/11/22	2016/12/7											
124	2.5.3.4.2	Installation of settlement plate	10 days	2016/12/6	2016/12/15											
125	2.5.3.5	Construction of Trial Pile	136 days	2016/12/16	2017/4/30											
126	2.5.3.5.1	Installation of trial pile (6 piles)	84 days	2016/12/16	2017/3/9											
127	2.5.3.5.2	Dynamic pile test	72 days	2016/12/29	2017/3/10											
128	2.5.3.5.3	Static load test	42 days	2017/3/11	2017/4/21											
129	2.5.3.5.4	Prepare & submit as-built record plan	7 days	2017/4/17	2017/4/23											
130	2.5.3.5.5	Submission of BA14	1 day	2017/4/23	2017/4/23											
131	2.5.3.5.6	Cut off the piles to level +3.0mPD	7 days	2017/4/24	2017/4/30											
132	2.5.3.6	Completion of trial pile	0 days	2017/4/30	2017/4/30											
133	2.5.4	Completion of section C	0 days	2017/4/30	2017/4/30											
134	2.5.5	Demobilization of plants	0 days	2017/4/30	2017/4/30											
135	2.6	Handover of site works area for Section C	0 days	2017/5/1	2017/5/1											
136																
137	2.7	Section D	383 days	2016/1/15	2017/1/31											
138	2.7.1	General Site Works	36 days	2016/3/1	2016/4/5											
139	2.7.1.1	Cable duct & draw pit	21 days	2016/3/1	2016/3/21											
140	2.7.1.2	Relocation of lamp pole (5 poles)	20 days	2016/3/17	2016/4/5											
141	2.7.2	G.I. Works	99 days	2016/3/4	2016/6/10											
142	2.7.2.1	Submission of BA10 for G.I. works	7 days	2016/3/4	2016/3/10											
143	2.7.2.2	Carry out G.I. works (11 nos.)	85 days	2016/3/11	2016/6/3											
144	2.7.2.3	Prepare & submit as-built record plan	7 days	2016/6/4	2016/6/10											
145	2.7.2.4	Submission of BA14	1 day	2016/6/10	2016/6/10											
146	2.7.3	Ground Treatment Time	276 days	2016/5/1	2017/1/31											
147	2.7.3.1	9 months for monitoring settlement after completion of ground treatment	276 days	2016/5/1	2017/1/31											
148	2.7.4	External Works	227 days	2016/1/15	2016/8/28											
149	2.7.4.1	Repair & make good site office B & existing latrines	90 days	2016/3/1	2016/5/29											
150	2.7.4.2	Removal of the employer's materials stored in E6 area as instructed by the Engineer	90 days	2016/1/15	2016/4/13											
151	2.7.4.3	Installation of bund wall of sandbags	60 days	2016/5/1	2016/6/29											
152	2.7.4.4	Construction of new type 3 road	60 days	2016/6/30	2016/8/28											
153	2.7.5	Completion of section D	0 days	2017/1/31	2017/1/31											
154																
155	2.8	Contract completion	0 days	2017/4/30	2017/4/30											