

ID	Task Name	Duration	2021			
			Jul	Aug	Sep	
1	Civil and Building Works for Unit 11 and Assoicated Works	1197 days				
2	Contract Key Dates	1197 days				
3	Contract Commencement Date	0 days				
4	Completion Dates	1044 days				
5	Section A1 - Ground treatment installation works at Zone 1A	0 days				
6	Section A2 - Ground treatment installation works at Zone 1B	0 days				
7	Section A3 - Ground treatment installation works at Zone 2	0 days				
8	Section A4 - Ground treatment installation works at Zone 3	0 days				
9	Section A5 (i) - Ground treatment installation works at Zone 4 - Band drain installation	0 days				
10	Section A5 (ii) - Ground treatment installation works at Zone 4 - Surcharge filling	0 days				
11	Section A6 (i) - A&A Works for No. 4 C.W. Outfall at Area E18	0 days				
12	Section A6 (ii) - External works at Area E15	0 days				
13	Section B1 (i) - Area south of L11 MSB and HRSG from GL11-F eastwards leading to Chimney Road at Area E1 & E2	0 days				
14	Section B1 (ii) - Supporting structures for overhead cranes of L11 MSB including the associated roof structure except the roof deferred works	0 days				
15	Section B1 (iii) - FSRU Civil works at Area E13	0 days				
16	Section B2 - Retractable Cover D at Area E22	0 days				
17	Section B3 - External works at Area B1, D2 and D4	0 days				
18	Section C1 - Area south of L11 MSB from GL11-F westwards leading to Station Road at Area E3(A) & E3(B)	0 days				
19	Section C2 - (i) Southern part of L11 HRSG area and its surrounding at Area E7 except the deferred works for Lube Oil Storage Tank	0 days				
20	Section C2 - (ii) L11 Turbo Block foundation including the L11 MSB ground floor together with the equipment foundations between GL 11-F to 11-H and 11-1 to 11-6 for the installation of power generator, air inlet duct and lube oil reservoir	0 days				
21	Section C2 - (iii) G/F of L11 MSB including the Condenser Pit, Circulating Water Pipe Pit and equipment foundations between GL 11-B to 11-C and 11-1 to 11-6 for the installation of condenser	0 days				
22	Section D - (i) Roads and external grounds surrounding L11 MSB and L11 HRSG in addition to the southern & eastern areas mentioned above in Area E5 and E6	0 days				
23	Section D - (ii) Remaining northern part of L11 HRSG area and its surrounding in Area E6	0 days				
24	Section D - (iii) Whole of L11 MSB including the pipe and cable rack along south façade of L11 MSB with all underground utilities at Area E4 including C.W. Inlet and Outlet Culvert except the deferred works	0 days				
25	Section D - (iv) Link Bridge between L10 and L11 MSB and at the south of L11 MSB including their associated alternations & additions (A&A) Works at L10 MSB	0 days				
26	Section D - (v) Gas Duct Foundation, Pipe and Cable Rack and associated trench in Area E20	0 days				
27	Section E1 - (i) Link BrIdge and Pipe and Cable Rack connecting L11 MSB to the western area of L11 MSB at Area E3	0 days				
28	Section E1 - (ii) Gas Receiving Station and L11 Gas Receiving Station Equipment Room (GRS) Area Extension at Area E16	0 days				
29	Section E1 - (iii) External Works at Area E15 (C)	0 days				
30	Section E2 - Pipe and Cable Rack and trench at west of Chimney Road and Pipe and Cable Rack at south of Middle Road at Area E8 and E19	0 days				
31	Section E3 - Gas Pipe Support Foundation and Pipe Trench and associated external works at Area E14, E15 (A) and E15 (B)	0 days				
32	Section E4 - 275kV cable trenching works connecting the 275kV Switching Station Extension and L11 MSB at Area E9 (A)	0 days				
33	Section F - 275kV Station Building Extension and associated works at Area E17	0 days				
34	Section G - A&A Works at No. 4 C.W. Intake at Area E12	0 days				
35	Section H - L11 Steel flue liner at No. 4 Chimney	0 days				

ID	Task Name	Duration	2021			
			Jul	Aug	Sep	
36	Section I - (i) 275kV cable trenching works connecting the 275kV Switching Station Extension and L11 MSB at Area E9 (B)	0 days	4 and A&A for Existing Bund Wall at Area E21			
37	Section I - (ii) Interconnector 2 Trench Modification Works at Area E10	0 days				
38	Section J - (i) Demolition of Retractable Cover A&B & (ii) Foundation of LMX Light Oil Storage Tank Nos. 3 & 4 and A&A for Existing Bund Wall at	0 days				
39	Section K1 - External works at Area 15 (E) and 15(F)	0 days				
40	Section K2 - Removal of Southern Bund and External Works at Area D5, D6 and D7	0 days				
41	Section K3 - All remaining works shall be completed for reporting completion to BD and ready for OP inspection	0 days	I Works at Area D5, D6 and D7			◆Section K3 - All remain
42	General & Preliminary	318 days				
43	Set up Temporary Site Office and Utilities	90 days				
44	Permit Applications & Statuary Submissions	120 days				
45	Existing Utilities scanning & Excavation Permit	45 days				
46	Tower Crane erection 2@MSB, 1@ 275	50 days				
47	Submission and Approval	554 days				
48	Method Statement / Temp Work Submission & Approval from HEC for General Works	240 days				
49	BD Approval & Consent (If required)	120 days				
50	BIM Model, CSD & CBWD Submission & Approval from HEC	200 days				
51	Structure Steelwork Connection Design Submission & BD Approval	60 days				
52	Structure Steelwork Shop Drawing & Approval	60 days				
53	Metal Cladding, louvre & windows submission & BD Approval	60 days				
54	Metal Cladding, louvre & windows shop drawing submission	60 days				
55	Order, Off Site Fabrication and Delivery (S. Steel & Cladding & louvres)	180 days				
56	Retractable Cover D BD Submission & Approval	90 days				
57	No. 4 C.W. Outfall A&A BD 1st Submission	90 days				
58	Sumission & Approval of Steel Flue Assessment Report and Design Drawings	60 days				
59	Submission and Approval of Steel Flue Design from BD	60 days				
60	Material Fabrication & Delivery for L11 Flue	100 days				
61	Folding Shutters Shop Drawing Submission & Approval	120 days				
62	Fabrication & Delivery of Folding Shutters	150 days				
63	Sewage Pump System Design submission & approval	90 days				
64	Fabrication & Delivery of Sewage Pump	180 days				
65	Other material submission & approval & delivery	300 days				
66	Coordination with the Employer's Specialist Contractors	478 days				
67	Installation of Puddle Pipes at C.W. outlet Culvert	7 days				
68	Installation of Puddle Pipes at C.W. Inlet Culvert	7 days				
69	Template setting at L11 Turbo Block Foundation	60 days				
70	Template setting of holding down bolts at HRSG column base	46 days				
71	I-beam / channel base installation on top of transformer foundations at Transformer Area	30 days				
72	Overhead crane erection at turbine hall using access through a temporary opening at L11 MSB roof between GL11-G to 11-H and 11-2 to 11-6	36 days				
73	Condenser assembly and erection using access through a temporary façade opening at L11 MSB below 1/F along GL 11-6 from GL11-B to 11-C including a clear space below 1/F between GL 11-B to 11-C	127 days				
74	Installation of power train equipment including air inlet duct using access through a temporary façade opening at L11 MSB below 1/F along GL 11-6 from GL11-F to 11-H including a clear space below 1/F of the above area	142 days				
75	Installation of embedded materials such as holding down bolts for equipment foundations - Commencement	30 days				
76	Section A1 & A2 - Ground treatment at Zone 1A & 1B	92 days				
77	Plant establishment for earthworks	7 days				
78	Backfilling and compaction from existing ground +4.5mPD to +5.5mPD	45 days				
79	Delivery of band drain	5 days				
80	Plant establishment for band drain (1st rig)	10 days				
81	Plant establishment for band drain (2nd rig)	7 days				
82	Plant establishment for band drain (3rd rig)	7 days				

ID	Task Name	Duration	2021			
			Jul	Aug	Sep	
83	Vert. Band drain installation (1023 nos. x 44m)	45 days				
84	Deposition of surcharge up to +8.3mPD	45 days				
85	Section A3 - Ground treatment installation works at Zone 2	158 days				
86	Backfilling and compaction from existing ground +4.5mPD to +5.5mPD	30 days				
87	Delivery of band drain	6 days				
88	Vert. Band drain installation (1787 nos. x 44m)	50 days				
89	Deposition of surcharge up to +8.3mPD	60 days				
90	Additional Concrete Blocks + Extra Surcharge	60 days				
91	Section A4 - Ground treatment installation works at Zone 3	131 days				
92	Backfilling and compaction from existing ground +4.5mPD to +5.5mPD	12 days				
93	Vert. Band drain installation	60 days				
94	Deposition of surcharge up to +8.3mPD	45 days				
95	Possession of Part 1 Defer portion at Zone 3	0 days				
96	Vert. Band drain installation	10 days				
97	Possession of Part 2 Defer portion at Zone 3	0 days				
98	Vert. Band drain installation	7 days				
99	Surcharge at deferred portion	14 days				
100	Section A5 (i) - Ground treatment installation works at Zone 4	83 days				
101	Site Preparation for Vertical Band Drain	3 days				
102	Band drain installation	21 days				
103	Possession of Defer portion at Zone 4	0 days				
104	Vert. Band drain installation	28 days				
105	Section A5 (ii) - Surcharge works at Zone 4	30 days				
106	Deposition of surcharge up to +8.3mPD	30 days				
107	Section A6 (i) - A&A Works for No. 4 C.W. Outfall at Area E18	493 days				
108	BD Amendment, resubmission & approval for Jacking Pit	170 days				
109	Consent for Jacking Pit ELS	28 days				
110	Mobilization	0 days				
111	Jacking Pit Sheetpile Installation (incl. Stop work notice + CNY)	60 days				
112	Protective screen and preventive measure for U9 gas pipeline (VO)	28 days				
113	Provision of temp support for U10 gas pipeline (VO) upon RMA allow access	28 days				
114	ELS of jacking pit	30 days				
115	Pipe Jacking set up & ground strengthing	18 days				
116	Pipe Jacking	90 days				
117	Receiving Pit BD Approval	170 days				
118	Consent for Pipe & Sheet pile	28 days				
119	Receiving Pit Pipe & Sheet pile installation	30 days				
120	Consent for Receiving Pit ELS	28 days				
121	ELS of Receiving pit	40 days				
122	Allow modify existing outfall manhole for pipe jacking receiving	18 days				
123	Culvert Pipe Intallation & water test	55 days				
124	Inspection Manhole at Jacking Pit + backfill (Area E3(A))	18 days				
125	Manhole extension at Outfall no. 4 + backfill + Reinstate of Outfall Rd	45 days				
126	Sheetpile for L12 Outlet culvert (Connection to Jacking Pit)	45 days				
127	Consent + ELS for remaining jacking pit	75 days				
128	Outlet Culvert pipe installation + Thrust Box (remaining portion at A1 Area)	45 days				
129	Sheet pile for future extension along GRS	60 days				
130	Section A6 (ii) - External works at Area E15(D)	37 days				
131	Arae possession & Clearance	6 days				
132	Road & Surface Works	31 days				
133	Section B1 (i) - Area south of L11 MSB and HRSG from GL11-F eastwards leading to Chimney Road at Area E1 & E2	375 days				
134	Area Possession & Clearance	0 days				
135	Excavation for CW Inlet Culvert (South of L11 HRSG)	21 days				
136	Installation CW Inlet Culvert pipe	30 days				
137	Construction of Thrust Box & Manholes,etc	14 days				
138	Backfill	21 days				
139	Install underground utilities	45 days				
140	Backfill and Temporary paving for Condensor Move in (E1)	14 days				
141	Backfill and Temporary paving for Condensor Move in (others)	30 days				
142	Section B1 (ii) - Supporting structures for overhead cranes of L11 MSB including the associated roof structure except the roof deferred works	482 days				
143	Area possession & Clearance	0 days				
144	Erection of turbine hall roof except defer work	0 days				

ID	Task Name	Duration	2021			
			Jul	Aug	Sep	
145	Installation of crane griders	21 days				
146	Turbine hall wall claddings	60 days				
147	<u>Section B1 (iii) - FSRU Civil works at Area E13 (GRS)</u>	151 days				
148	Submission and approval for consent to work	0 days				
149	Civil & Building Works	130 days				
150	Ground reinstatement	21 days				
151	<u>Section B2 - Retractable Cover D at Area E22</u>	435 days				
152	Area Possession, Demolition and clearance work	60 days				
153	Revise Structural Form and BD resubmission & approval	150 days				
154	Foundation construction	60 days				
155	Backfill & Ground reinstatement	30 days				
156	Superstructure fabrication & delivery	90 days				
157	Superstructure erection	90 days				
158	E&M Installation and T&C	45 days				
159	<u>Section B3 - External works at Area B1, D2 and D4</u>	416 days				
160	Receive Area from HKE, Area Possession & Clearance	0 days				
161	Removal of existing paving for band drain under Section A5(i)	30 days				
162	Complete Vert. Band drain under Section A5(i)	0 days				
163	Ground preparation for B1, D2 & D4 for handover to Plant contractor	90 days				
164	<u>Section C1 - Area south of L11 MSB from GL11-F westwards leading to Station Road at Area E3(A) & E3(B)</u>	466 days				
165	Area Possession & Clearance	0 days				
166	Excavation for Type C (Area E3A)	21 days				
167	Installation CW Outlet Culvert Pipe connect to Type C1	21 days				
168	Installation CW Inlet Culvert pipe (South of L11 Condensor)	21 days				
169	Construction of Thrust Box	10 days				
170	Construction of Access Manhole	21 days				
171	Backfill	14 days				
172	Construction of Underground drainage and utilities	60 days				
173	Construct Temp Paving for Condenser move in	45 days				
174	<u>Section C2 - (i) Southern part of L11 HRSG area and its surrounding at Area E7 (No Defer Foundations)</u>	295 days				
175	Area Possession & Clearance	0 days				
176	Excavation & Pile Caps & Tie Beams (HRSG South Area E7)	45 days				
177	Construction RC foundations	45 days				
178	Construction RC plinths	30 days				
179	Construction underground utilities	45 days				
180	Backfill & Construction on-grade slabs	35 days				
181	Backfill and Temporary paving	21 days				
182	<u>Section C2 - (ii) L11 Turbo Block foundation including the L11 MSB ground floor together with the equipment foundations between GL 11-F to 11-H and 11-1 to 11-6 for the installation of power generator, air inlet duct and lube oil reservoir</u>	496 days				
183	Area Possession & Clearance	0 days				
184	Excavation & Pile Caps & Tie Beams (MSBL11 - Turbo Block North)	70 days				
185	Excavation & Pile Caps & Tie Beams (MSBL11 - Turbo Block South)	30 days				
186	Backfill and construction turbine block foundations	21 days				
187	Construction of internal drainage	60 days				
188	Construction RC walls incl. G/F rooms	90 days				
189	Construction turbine block columns and upper portion for plant embed installation	21 days				
190	Concrete Turbine upper part foundation & clear falsework	52 days				
191	<u>Section C2 - (iii) G/F of L11 MSB including the Condenser Pit, Circulating Water Pipe Pit and equipment foundations between GL 11-B to 11-C and 11-1 to 11-6 for the installation of condenser</u>	466 days				
192	Area Possession & Clearance	0 days				
193	Excavation to foundation level at ELS Type A	18 days				
194	Construction of CW Outlet Box + lowest tie beam & caps	40 days				
195	Construction of pile caps & tie beams & hot well sump pit up to +2.5mPD	30 days				
196	Backfill & Construction of CW Inlet Box + tie beams	18 days				
197	Backfill and Construction ground beams & trenches	18 days				

ID	Task Name	Duration	2021			
			Jul	Aug	Sep	
198	Construction of indoor underground drainage	12 days				
199	Backfill & construction on-grade slabs	10 days				
200	Construction Column casting and RC walls	30 days				
201	Metal Cladding & Louvres for GLB-C/1-6	60 days				
202	Mis. Works for plant erection	24 days				
203	<u>Section D - (i) Roads and external grounds surrounding L11 MSB and L11 HRSG in addition to the southern & eastern areas mentioned above in Area E5 and E6</u>	414 days				
204	Area Possession & Clearance	14 days				
205	Excavation for Type C1 and open sheet pile	75 days				
206	Install CW Outlet pipe & connect to previous	21 days				
207	Backfill	10 days				
208	Undeground utilities and trenches	60 days				
209	Construction of plant drainage, trenches & RC plinths	45 days				
210	Remaining Undeground utilities & backfill (West of Tx Bay)	75 days				
211	<u>Section D - (ii) Remaining northern part of L11 HRSG area and its surrounding in Area E6</u>	375 days				
212	Area Possession & Clearance	0 days				
213	Excavation & Pits & Pile Caps & Tie Beams (HRSG north Area E6)	45 days				
214	Construction RC foundations	45 days				
215	Construction RC plinths & HRSG Lift Pit & internal drainage	60 days				
216	Backfill Construction on-grade slabs	28 days				
217	Construction underground utilities	45 days				
218	Backfill, Remaining utilities and temporary paving	85 days				
219	Touch up and site clearance	13 days				
220	<u>Section D - (iii) Whole of L11 MSB including the pipe and cable rack along south façade of L11 MSB with all underground utilities at Area E4 including C.W. Inlet and Outlet Culvert except the deferred works</u>	526 days				
221	Area Possession & Clearance	0 days				
222	Construction of pile caps & tie beams at Transformer Area	60 days				
223	Excavation & Construction Blow Down Sum pit (Type B)	45 days				
224	Construction of pile caps & tie beams at SunShadeCover Area	45 days				
225	Preparation for S.Steelwork Erection	14 days				
226	Structural Delivery & Erection (Turbine Hall North fr G.L. 1-3/H->B)	30 days				
227	Structural Delivery & Erection (Equipment Floors)	45 days				
228	Structural Delivery & Erection (Turbine Hall South)	45 days				
229	Fire Coating Application at Joint	120 days				
230	External Scaffolding Erection	150 days				
231	Construction 1/F RC Slab	14 days				
232	Construction M/F RC Slab	7 days				
233	Construction 2/F RC Slab	14 days				
234	Construction 3/F RC Slab	14 days				
235	Construction 4/F RC Slab	14 days				
236	Construction 5/F RC Slab (Roof of turbine hall, except defer portion)	30 days				
237	Construction Roof RC Slab	14 days				
238	Construction Upper Roof RC Slab	12 days				
239	Construction Defer Roof RC Slab (G.L. G-H)	30 days				
240	Construction of Staircase ST-01 & lift shaft & machine room	120 days				
241	Construction of Staircase ST-02 except defer work	76 days				
242	Construction of RC plinth, kerbs & parapet Walls	30 days				
243	Erection of Skylight & Roof Features	45 days				
244	Waterproofing & Flooring at Roof	60 days				
245	ABFW Works from 1/F to 5/F equipment rooms	150 days				
246	Metal Cladding, Windows and Louvres incl. roof feature	100 days				
247	Removal of external scaffolding	60 days				
248	Building Services E&M Access & Installation	150 days				
249	Remaining and Mis. works for Plant erection Full Access	18 days				
250	<u>Section D - (iv) Link Bridge between L10 and L11 MSB and at the south of L11 MSB including their associated alternations & additions (A&A) Works at L10 MSB</u>	526 days				
251	Area Possession & Clearance	0 days				

ID	Task Name	Duration	2021			
			Jul	Aug	Sep	
252	A&A works at South of L10 MSB	60 days				
253	Erection of link bridge structural steel	21 days				
254	Casting of bridge deck	7 days				
255	Metal roofing installation	14 days				
256	ABWF work	21 days				
257	Form new opening at MSB for final connection	14 days				
258	E&M Work for completion	21 days				
259	<u>Section D - (v) Gas Duct Foundation, Pipe and Cable Rack and associated trench in Area E20</u>	345 days				
260	Area Possession & Clearance + CNY	0 days				
261	Sheet pile installation & submit as-built	75 days				
262	Consent for excavation	28 days				
263	Excavation & plate load test	45 days				
264	Construction of foundation	45 days				
265	Backfill & Underground utiliies	30 days				
266	Remaining Pipe & cable rack and associated trenches in Area E20	115 days				
267	<u>Section E1 - (i) Link BrIdge and Pipe and Cable Rack connecting L11 MSB to the western area of L11 MSB at Area E3</u>	263 days				
268	Area Possession	0 days				
269	Excavation & construction of new foundation	40 days				
270	Backfill	10 days				
271	Erection of Structural steel	30 days				
272	Backfill & Ground works	55 days				
273	<u>Section E1 - (ii) Gas Receiving Station and L11 Gas Receiving Station Equipment Room (GRS) Area Extension at Area E16</u>	173 days				
274	Area Possession	0 days				
275	Removal of Surcharge and excavation	14 days				
276	Modification of Site Drainage	45 days				
277	Construction of new RC for GRS Equipment Room	75 days				
278	ABWF for GRS Equipment room	45 days				
279	E&M Installation	45 days				
280	Construction of new Gas pipe plinths & racks	45 days				
281	Backfill and construction site drainage	21 days				
282	External Paving and install new fencing	60 days				
283	<u>Section E1 - (iii) External Works at Area E15 (C)</u>	273 days				
284	Removal of Surcharge and excavation	45 days				
285	Underground drianage, Utilities and RC plinths	123 days				
286	Backfill and install surface utilities	45 days				
287	Roadwork	60 days				
288	<u>Section E2 - Pipe and Cable Rack and trench at west of Chimney Road and Pipe and Cable Rack at south of Middle Road at Area E8 and E19</u>	495 days				
289	BD consent + Site Possession @ Area E8	0 days				
290	Excavation & Plate load test	60 days				
291	Foundation and Trench constructions	90 days				
292	Backfill & underground utitiles + temp paving	60 days				
293	Excavation & plate load test @ E19	60 days				
294	Construction of foundations & trenches	45 days				
295	Backfill & underground utitiles	60 days				
296	Pipe & cable rack Erection	60 days				
297	Ground reinstatement	60 days				
298	<u>Section E3 - Gas Pipe Support Foundation and Pipe Trench and associated external works at Area E14, E15 (A) and E15 (B)</u>	173 days				
299	Removal of surcharge / site clearance	21 days				
300	Excavation & construction of pipe trench	30 days				
301	Construction of gas pipe support foundation	30 days				
302	Construction of underground drainage and utilities	60 days				
303	Backfill & road work	32 days				
304	<u>Section E4 - 275kV cable trenching works connecting the 275kV Switching Station Extension and L11 MSB at Area E9 (A)</u>	185 days				
305	Site possession	0 days				
306	Obtain Permit to work & Road close permit	10 days				

ID	Task Name	Duration	2021			
			Jul	Aug	Sep	
307	Excavation & construction new cable trench to 275kV	45 days				
308	Excavation & construction new cable trench to L11MSB	130 days				
309	<u>Section F - 275kV Station Building Extension and associated works at Area E17</u>	709 days				
310	Installation of ELS for 275kV Switching Station near Staircase ST-3 and ST-6	14 days				
311	Construction of Staircase ST-3	110 days				
312	BD Amendment Approval on A&A	0 days				
313	BD Amendment Approval on A&A ST3 & Drainage	0 days				
314	OP inspection of Staircase ST-3	14 days				
315	Consent of New Foundation Works (Stage 1)	0 days				
316	Consent & BA10 for Demolition of Existing Staircase	0 days				
317	Demolition of Existing Staircase and Submit BA14A	14 days				
318	BD inspection for BA14A & Issue OP	28 days				
319	Consent & BA10 for New Foundation Work (Stage 2)	28 days				
320	Hoarding Modification	7 days				
321	Pile Cap & Tie Beam Construction (Stage 1)	98 days				
322	Erection of Tower Crane	40 days				
323	Pile Cap and Tie Beam (Stage 2)	21 days				
324	RC Construction up to 1/F (Stage 1)	30 days				
325	RC Construction up to 1/F (Stage 2)	75 days				
326	Construction of Staircase ST6	90 days				
327	Shop Drawing Submission & Approval of Structural Steel	45 days				
328	Structural Steel fabrication & Delivery	60 days				
329	Erection of Structural Steel GL 17~18	30 days				
330	Erection of Structural Steel GL 8~17	60 days				
331	Metal Cladding Delivery	60 days				
332	Metal Door, Window & Louvre Delivery	45 days				
333	Erection of Working Platform and Scaffold	150 days				
334	Install Decking	60 days				
335	RC Walls from 1/F @ GIS Hall	40 days				
336	Construction of 2/F RC slab	14 days				
337	Construction of R/F RC slab	21 days				
338	Construction of UR/F RC slab	14 days				
339	Construction of GIS Hall Floor	60 days				
340	Installation of Overhead Crane (By JEC)	60 days				
341	Construction of staircase ST4, ST5, Lift Shaft & Equip Floors	150 days				
342	Lift Installation	90 days				
343	Concrete of RC walls, plinths, kerb & parapet walls & New trench for LV Power	30 days				
344	ABWF Works @ G/F	50 days				
345	ABWF Works @ 1/F	50 days				
346	ABWF Works @ 2/F	75 days				
347	ABWF Works @ R/F	30 days				
348	ABWF Works @ UR/F	21 days				
349	Waterproofing Works at R/F & UR/F	45 days				
350	Building Services E&M Access & Installation & T&C	150 days				
351	Metal Cladding, Windows and Louvres incl. Roof Feature	90 days				
352	Shutter Erection	30 days				
353	Removal of External Scaffolding + Tower Crane	35 days				
354	External Underground Drainage and Utilities	30 days				
355	Road & Paving Reinstatement	30 days				
356	Ready for FSD & OP Inspection	0 days				
357	<u>Section G - A&A Works at No. 4 C.W. Intake at Area E12</u>	143 days				
358	Permit to work	0 days				
359	Erection of temp. platform	14 days				
360	Demolition work	30 days				
361	Modify existing slab openings	75 days				
362	Curing + Removal of platform	24 days				
363	<u>Section H - L11 Steel flue liner at No. 4 Chimney</u>	186 days				
364	Complete erection of L10 Steel flue	0 days				
365	Modification of erection equipment	21 days				
366	Erection temp. platform and demolition work	30 days				
367	Structural steel delivery & Erection	85 days				
368	Removal of temp. work	5 days				
369	Reinstate G/F louvre wall and access door	45 days				
370	<u>Section I - (i) 275kV cable trenching works connecting the 275kV Switching Station Extension and L11 MSB at Area E9 (B)</u>	232 days				
371	Obtain Permit to work & Road close permit	0 days				
372	Excavation & construction new cable trench	160 days				
373	Re-excavate cable trench for cable laying	72 days				
374	<u>Section I - (ii) Interconnector 2 Trench Modification Works at Area E10</u>	275 days				
375	Obtain Permit to work & Road close permit	0 days				
376	Re-excavate & new cable trench for cable laying	275 days				

ID	Task Name	Duration	2021			
			Jul	Aug	Sep	
377	Section J - (i) Demolition of Retractable Cover A&B & (ii) Construction of new LOT 3 & 4	426 days				
378	Obtain permit to work & Road close permit	0 days				
379	Erection of Hoarding	21 days				
380	Removal of existing cover & structural steel	30 days				
381	Demolish of existing bund wall and staircases	45 days				
382	Demolish of existing slab & foundation	60 days				
383	Consent for new work	30 days				
384	Construction of new bund wall and foundation	100 days				
385	Construction of new oil separator	80 days				
386	Construct underground drainage and surface channel	40 days				
387	Construction on-grade slab	60 days				
388	Removal of hoarding and ground reinstatement	40 days				
389	Section K1 - External works at Area 15 (E) and 15(F)	365 days				
390	Removal of surcharge	30 days				
391	Construct new drainage and utilities work	200 days				
392	Road & Paving	135 days				
393	Section K2 - Removal of Southern Bund and External Works at Area D5, D6 and D7	365 days				
394	Demolition work	30 days				
395	Construct new drainage and utilities work	200 days				
396	Road & Paving	135 days				
397	Section K3 - All remaining works shall be completed for reporting completion to BD and ready for OP inspection (PS1.4.4)	623 days				
398	Completion of remaining roof after over headcrane move in	30 days				
399	Construction of G/F Lube Oil Tank Room (BY TDK)	61 days				
400	Construction of wall and staircase at G/F after Condensor Move in	90 days				
401	Construction of Durasteel Steel wall panel after IBP installation	30 days				
402	Construction of Transformer fence wall, cladding & associated FS services	122 days				
403	Final restatement of road & paving around MSB & HRSG	122 days				
404	Installation of trench covers and gratings after plant installation	151 days				
405	Backfill and reinstatement after 275kV cable laying	122 days				

Revised Works Programme for 2no. DN1800 CW Outlet Pipes Installation - Culvert Outfall No. 4 + GRS Works

No.4 Outfall AA+GRS (Rev.13) (21-7-2021)



Paul Y Construction Co., Ltd.

Task

Split

Milestone

Summary

Project Summary

External Tasks

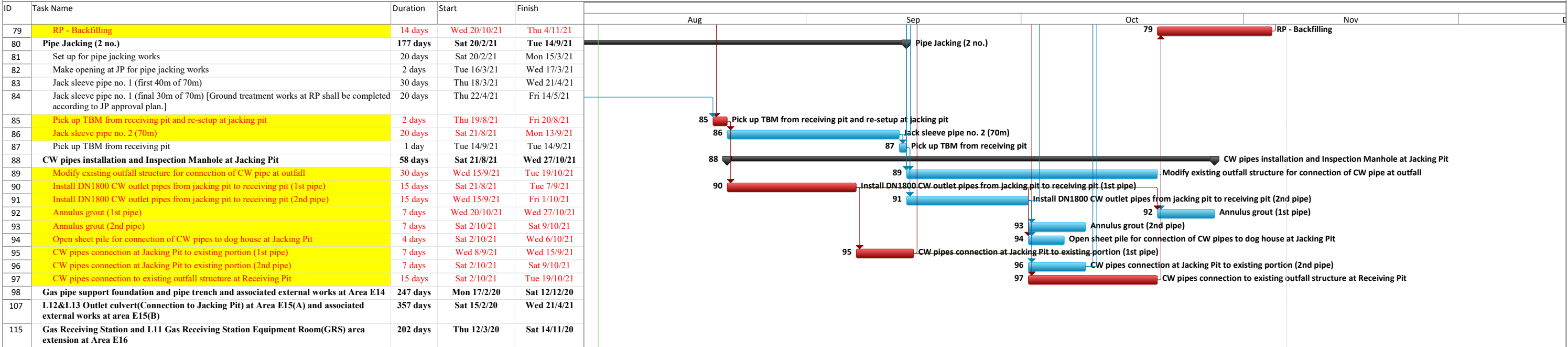
Critical

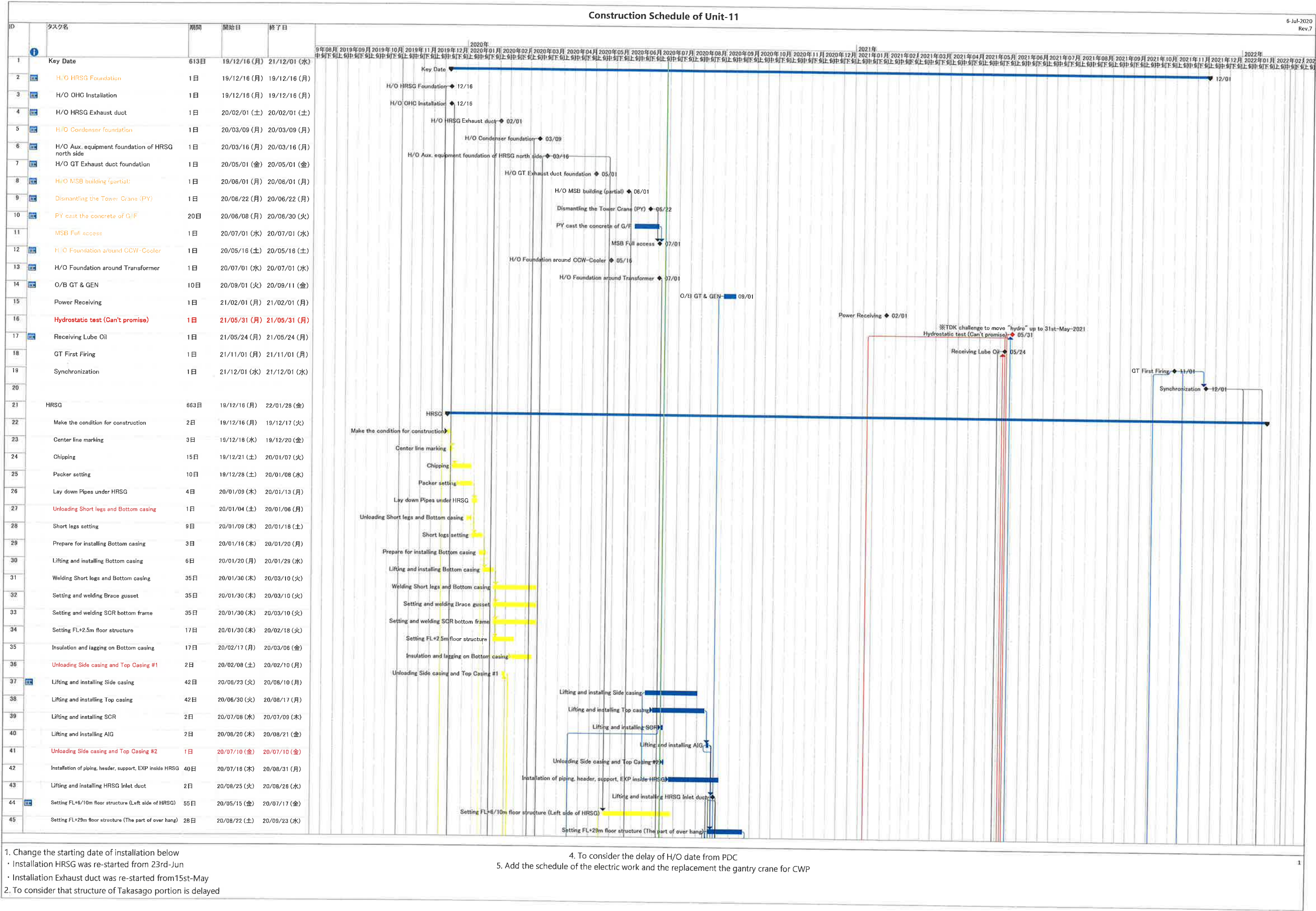
Critical Split

Progress

Revised Works Programme for 2no. DN1800 CW Outlet Pipes Installation - Culvert Outfall No. 4 + GRS Works

No.4 Outfall AA+GRS (Rev.13) (21-7-2021)





1. Change the starting date of installation below

・ Installation HRSG was re-started from 23rd-Jun

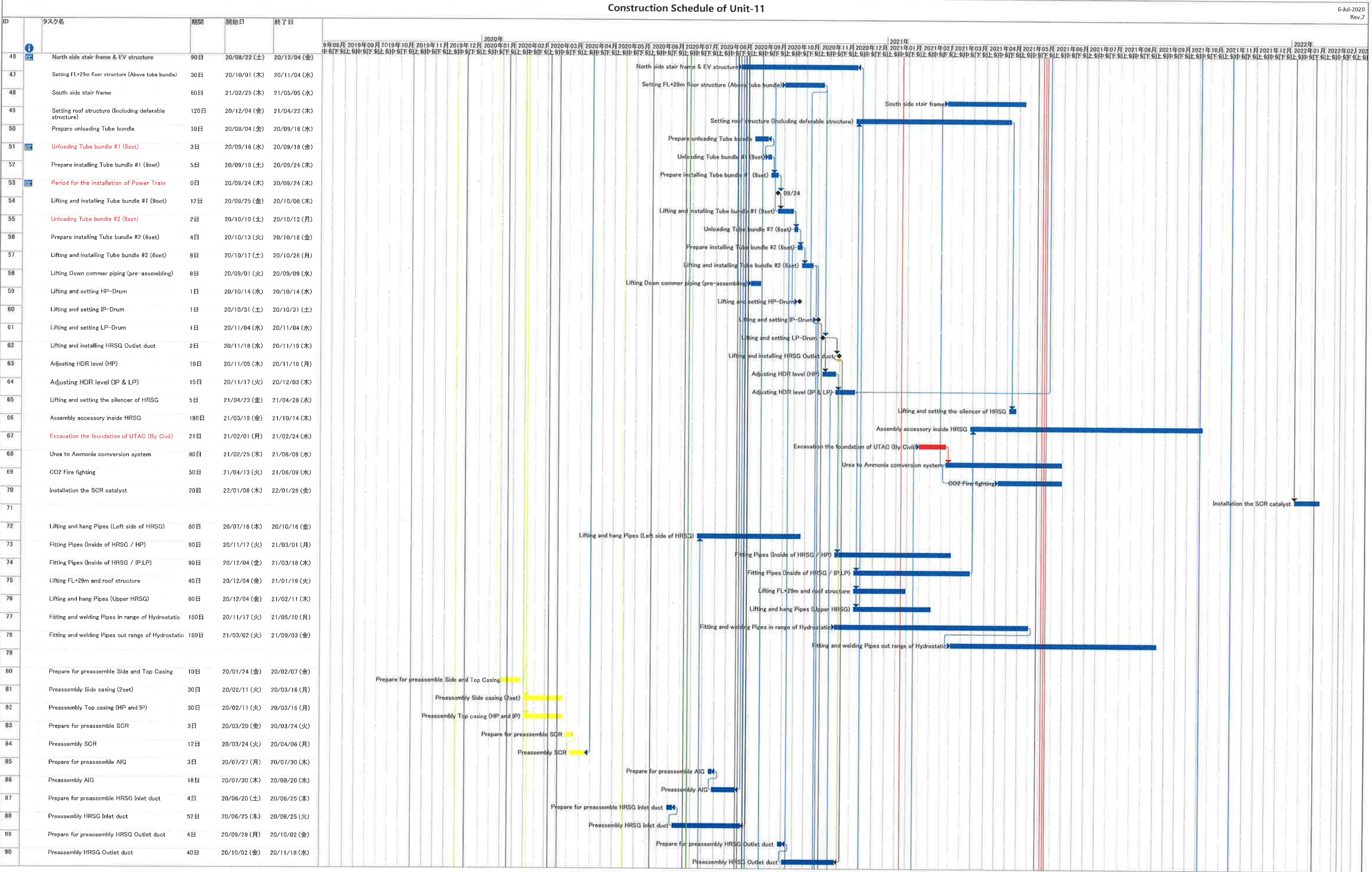
・ Installation Exhaust duct was re-started from 15th-May

2. To consider that structure of Takasago portion is delayed

4. To consider the delay of H/O date from PDC

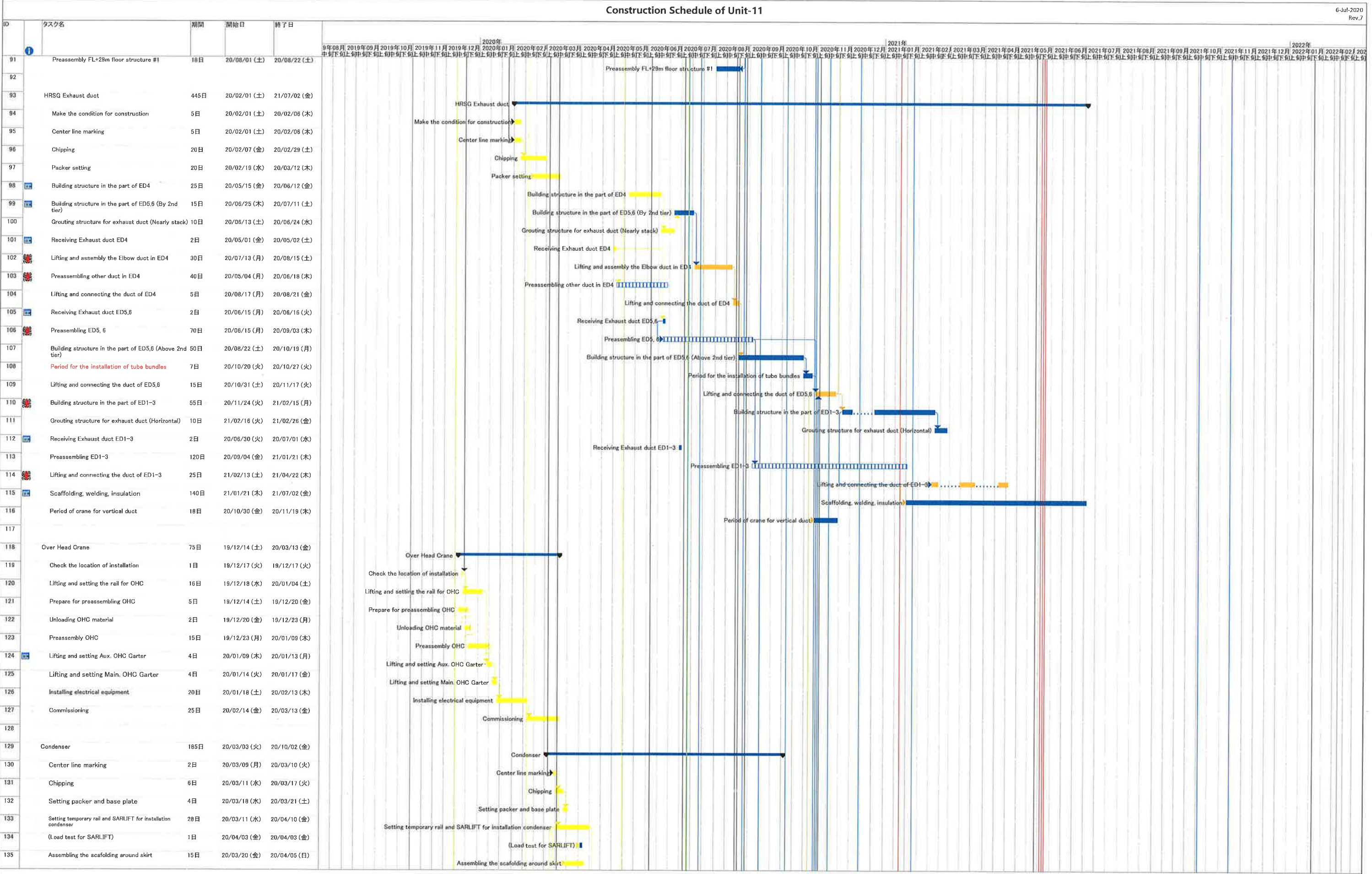
5. Add the schedule of the electric work and the replacement the gantry crane for CWP

1



1. Change the starting date of installation below
・ Installation HRSG was re-started from 23rd-Jun
・ Installation Exhaust duct was re-started from 15st-May
2. To consider that structure of Takasago portion is delayed

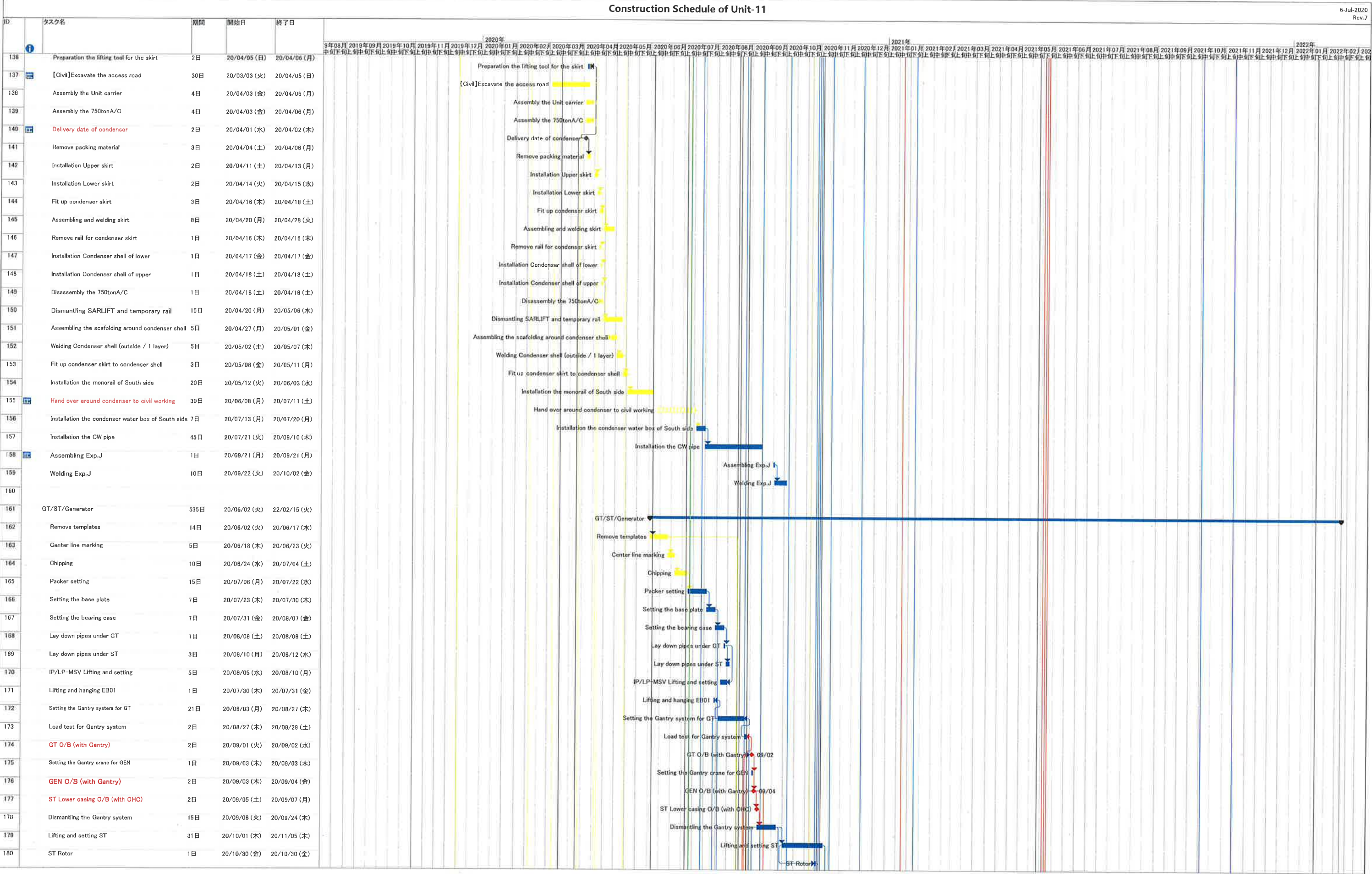
4. To consider the delay of H/O date from PDC
5. Add the schedule of the electric work and the replacement the gantry crane for CWP



1. Change the starting date of installation below

・ Installation HRSQ was re-started from 23rd-Jun

・ Installation Exhaust duct was re-started from 15th-May
2. To consider that structure of Takasago portion is delayed
4. To consider the delay of H/O date from PDC
5. Add the schedule of the electric work and the replacement the gantry crane for CWP



1. Change the starting date of installation below

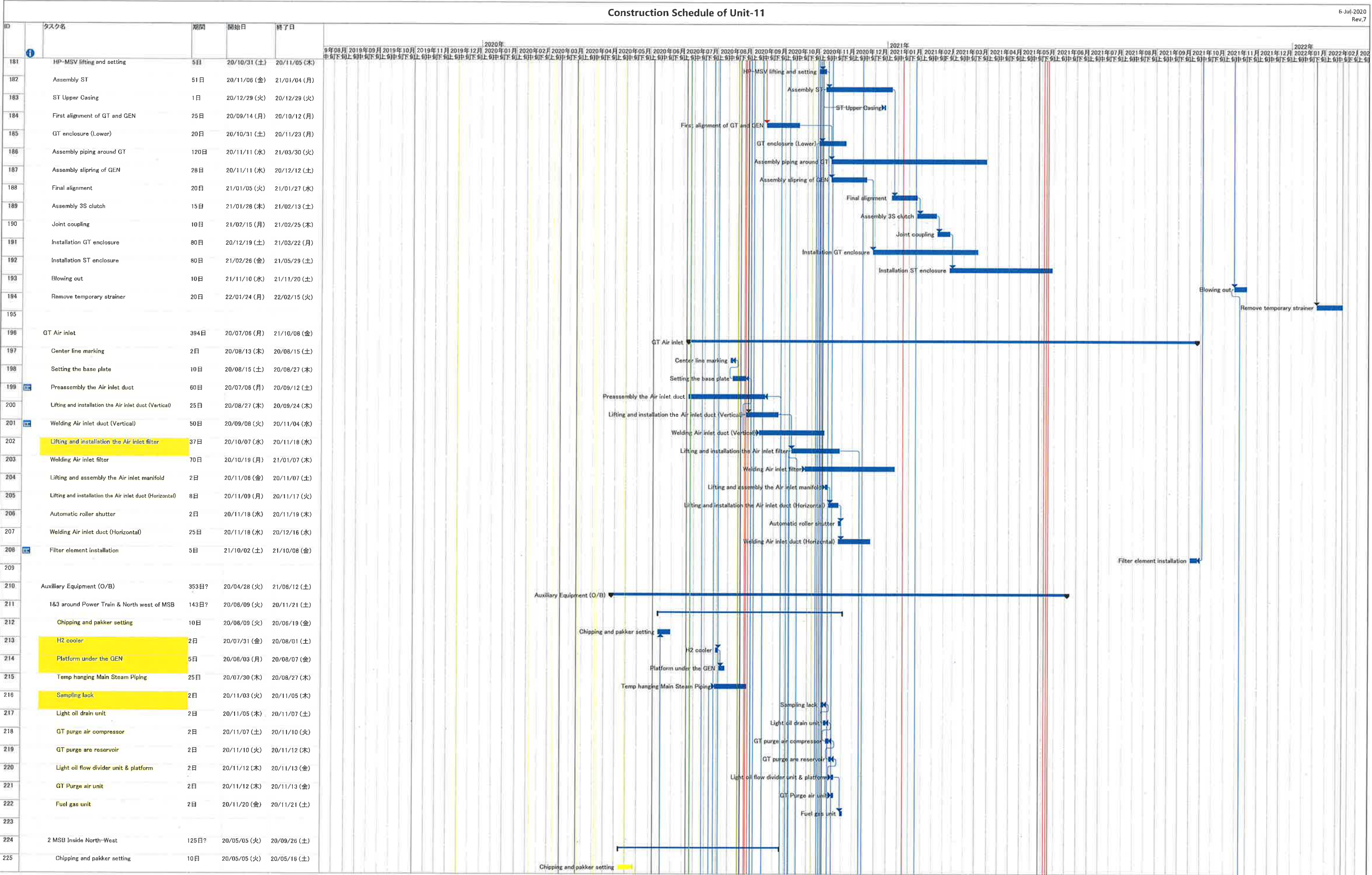
- Installation HRSG was re-started from 23rd-Jun
- Installation Exhaust duct was re-started from 15st-May

2. To consider that structure of Takasago portion is delayed

4. To consider the delay of H/O date from PDC

5. Add the schedule of the electric work and the replacement the gantry crane for CWP

4



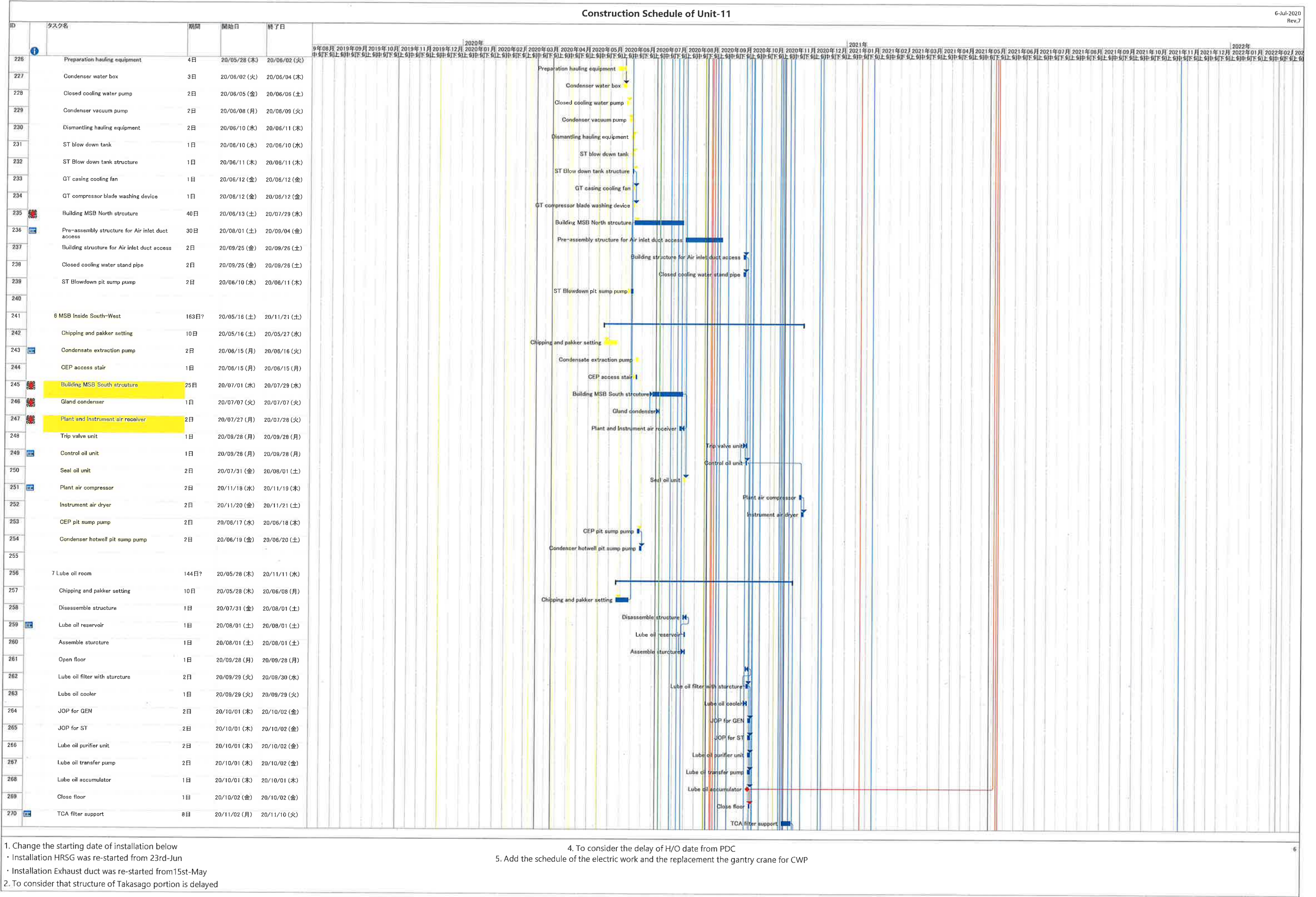
1. Change the starting date of installation below
・ Installation HRSG was re-started from 23rd-Jun
・ Installation Exhaust duct was re-started from 15st-May

2. To consider that structure of Takasago portion is delayed

3. To consider the delay of H/O date from PDC

4. To consider the delay of H/O date from PDC

5. Add the schedule of the electric work and the replacement the gantry crane for CWP



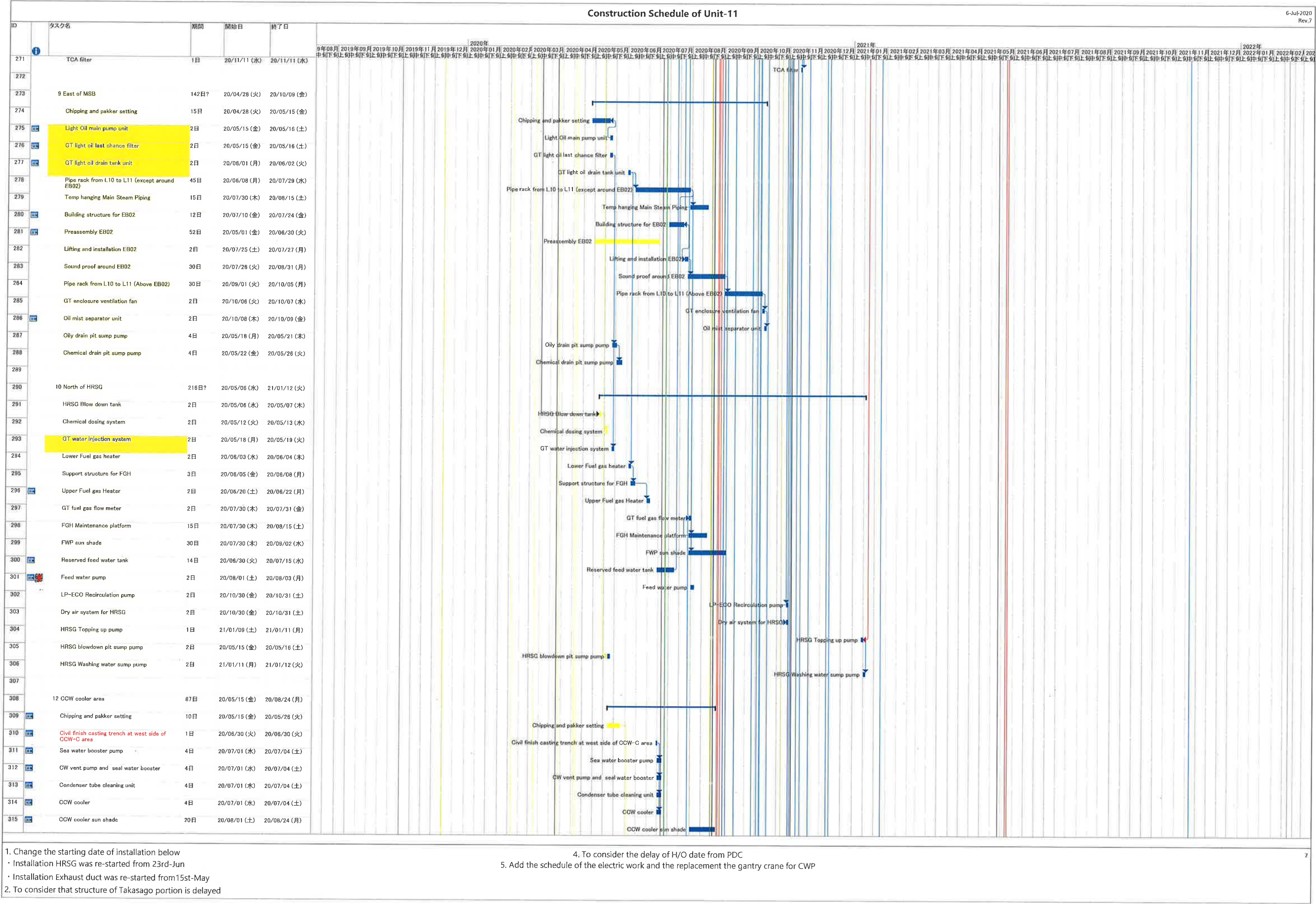
1. Change the starting date of installation below

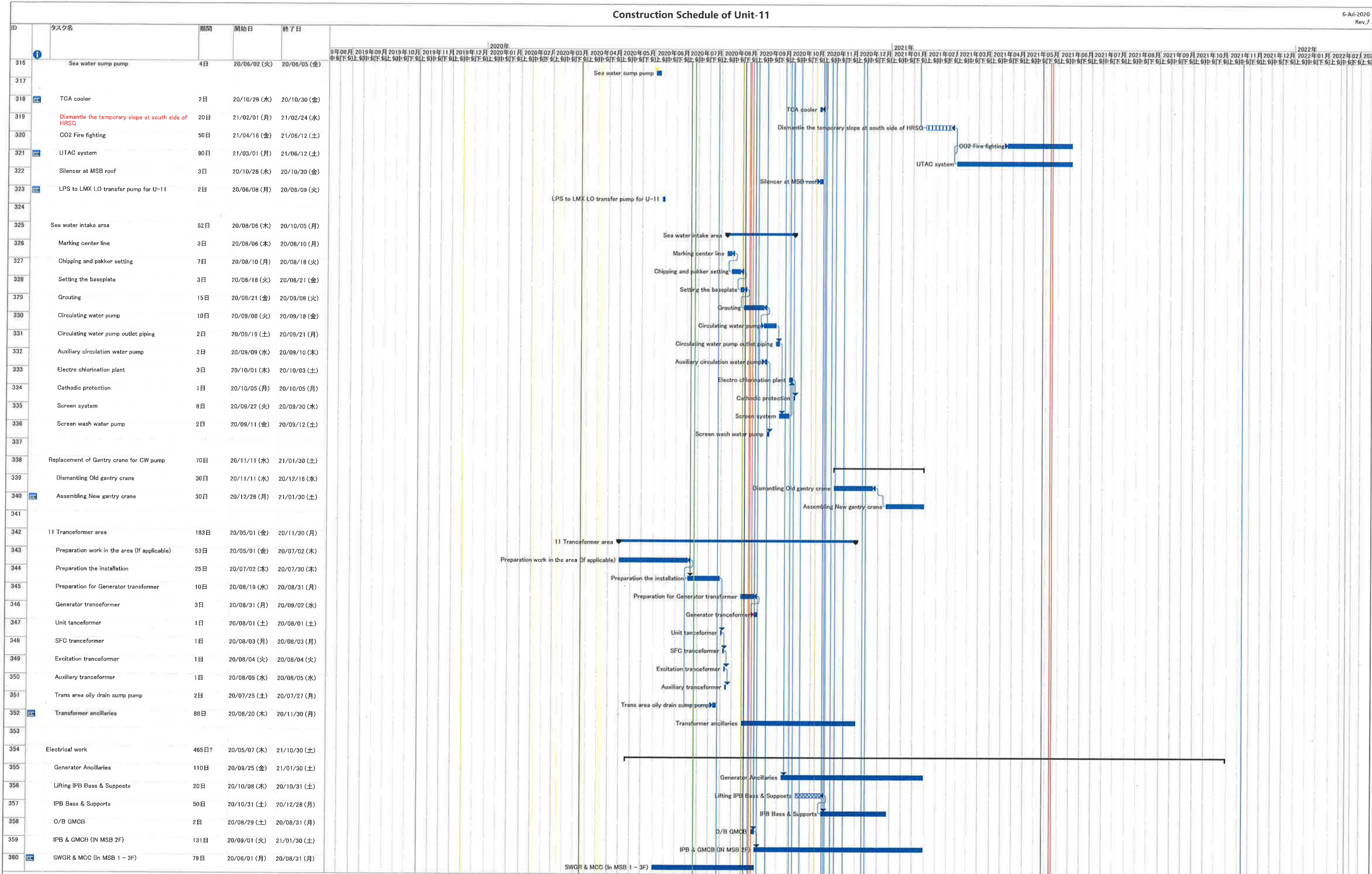
2. To consider that structure of Takasago portion is delayed

4. To consider the delay of H/O date from PDC

5. Add the schedule of the electric work and the replacement the gantry crane for CWP

6





1. Change the starting date of installation below

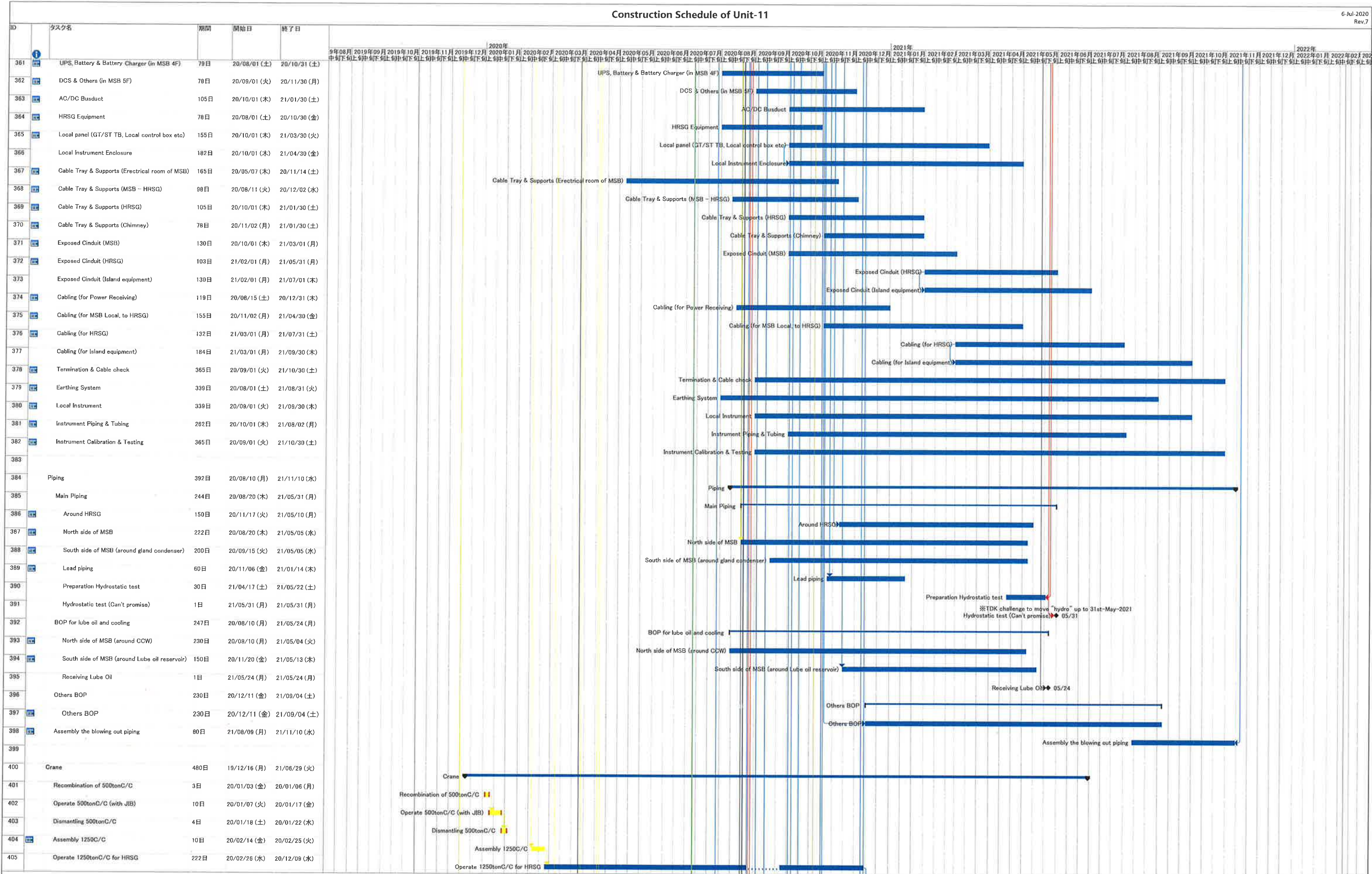
・ Installation HRSG was re-started from 23rd-Jun

・ Installation Exhaust duct was re-started from 15st-May

2. To consider that structure of Takasago portion is delayed

4. To consider the delay of H/O date from PDC

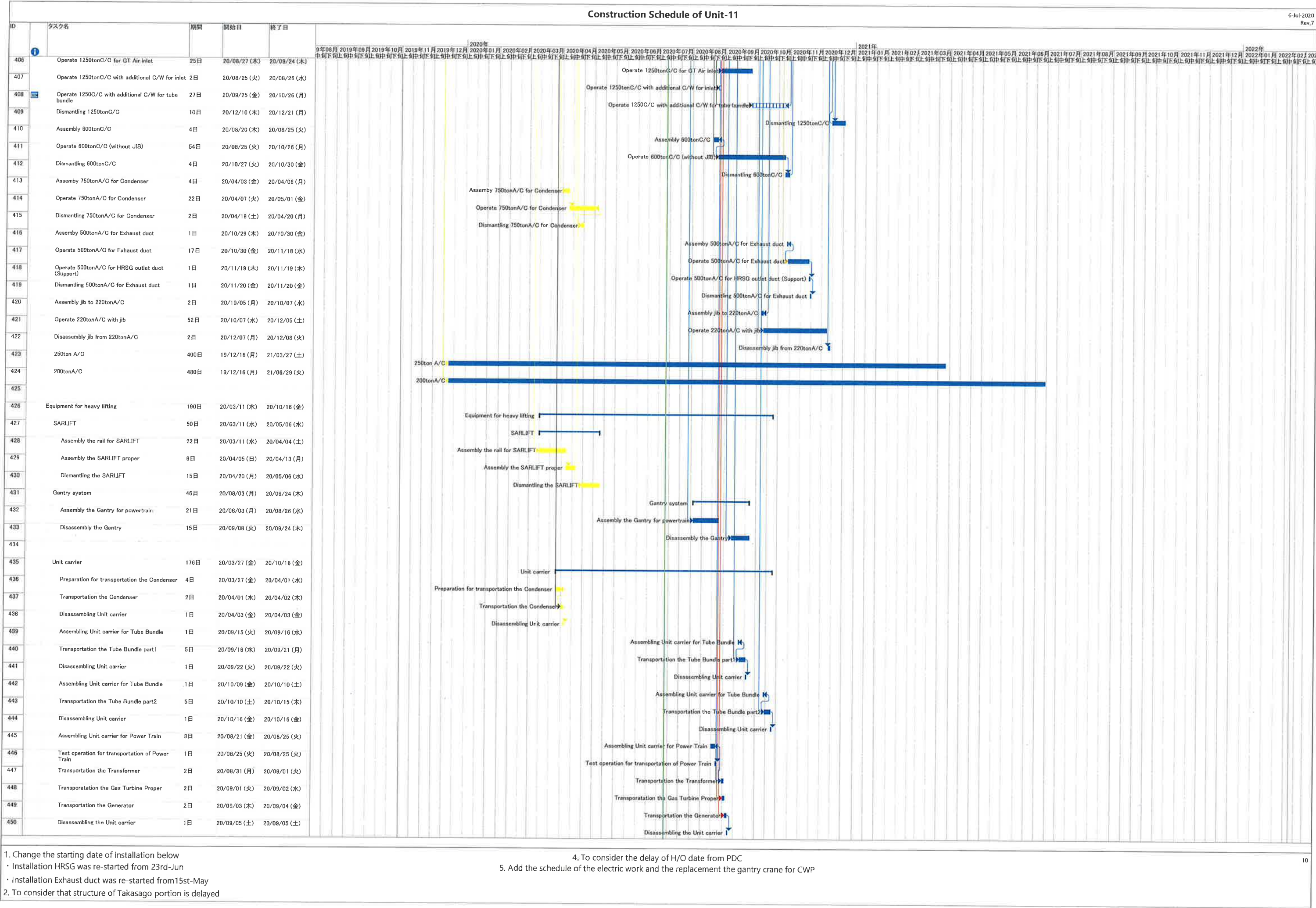
5. Add the schedule of the electric work and the replacement the gantry crane for CWP



1. Change the starting date of installation below
- ・ Installation HRSQ was re-started from 23rd-Jun

・ Installation Exhaust duct was re-started from 15st-May
2. To consider that structure of Takasago portion is delayed


4. To consider the delay of H/O date from PDC
5. Add the schedule of the electric work and the replacement the gantry crane for CWP



Master Programme

MASTER PROGRAMME

Rev 1-B 23 Aug 2021



Task Split Milestone

Summary

Page 1 of 4

Contract No. 19/83002 Lamma Power Station Extension Civil and Building Works for Unit L12

Master Programme

ID	Task Name	Duration	Start	Finish	
136	Excavation & Construct Pile Caps & Tie Beams & Piers	86 days	Mon 8/3/21	Thu 19/8/21	Construct Pile Caps & Tie Beams & Piers
137	Installation of Pipe Pile for HRSG foundation (VO)	48 days	Thu 25/3/21	Tue 11/5/21	
138	Construction HRSG & Gas Duct foundations	112 days	Fri 7/5/21	Fri 3/9/21	Construction HRSG & Gas Duct foundations
139	Construction of HRSG Equipment Room incl. ABWF & BS (except T&C)	64 days	Tue 4/5/21	Thu 30/9/21	Construction of HRSG Equipment Room incl. ABWF & BS (except T&C)
140	Construction underground utilities within HRSG	55 days	Mon 19/7/21	Sat 11/9/21	Construction underground utilities within HRSG
141	Backfill & Construction on-grade slabs & RC plinths on top	14 days	Fri 30/7/21	Mon 27/9/21	Backfill & Construction on-grade slabs & RC plinths on top
142	Backfill and Temporary paving	21 days	Fri 10/9/21	Thu 30/9/21	Backfill and Temporary paving
143	Section B2 (ii) - Remaining northern part of L12 HRSG area and its surrounding at Area F6A and F6C	319 days	Fri 1/1/21	Mon 15/11/21	
144	Area Possession and Clearance at Area F6A	30 days	Fri 1/1/21	Sat 30/1/21	
145	Subletting / Fabrication / Delivery (for Area F6A and F6C civil)	90 days	Sat 2/1/21	Thu 1/4/21	
146	Construction of Underground pits (HRSG Blowdown sump pit)	110 days	Sat 2/1/21	Wed 21/4/21	
147	Excavation & Construct Pile Caps & Tie Beams & Piers	139 days	Mon 1/2/21	Sat 10/7/21	
148	Construction underground utilities within HRSG	55 days	Mon 19/7/21	Sat 11/9/21	Construction underground utilities within HRSG
149	Construction of Underground pits (GT Oil & Chemical drain pits)	15 days	Thu 5/8/21	Thu 19/8/21	Construction of Underground pits (GT Oil & Chemical drain pits)
150	Backfill & Construction on-grade slabs & RC plinths on top	45 days	Sun 12/9/21	Tue 26/10/21	Backfill & Construction on-grade slabs & RC plinths on top
151	Construct RC Walls	90 days	Thu 22/4/21	Tue 20/7/21	
152	Construction of Underground utilities at F6C	21 days	Tue 19/10/21	Mon 8/11/21	Construction of Underground utilities at F6C
153	Backfill and Temporary paving	7 days	Tue 9/11/21	Mon 15/11/21	Backfill and Temporary paving
154	Section B2 - (iii) L12 Turbo Block foundation including the L12 MSB ground floor together with the equipment foundations between GL 12-F to 12-H and 12-1 to 12-6 for the installation of power generator, air inlet duct and lube oil reservoir	452 days	Fri 4/12/20	Mon 28/2/22	
155	Area Possession & Clearance	45 days	Fri 4/12/20	Sun 17/1/21	
156	Subletting / Fabrication / Delivery (Civil+ABWF+BS for MSBL12)	150 days	Fri 25/12/20	Sun 23/5/21	
157	Complete excavation at Type A&C Construction Area	0 days	Sun 21/3/21	Sun 21/3/21	
158	Excavation & Pile Caps & Tie Beams + Slabs (Turbo Block North)	75 days	Sun 31/1/21	Thu 15/4/21	
159	Backfill and construction turbine block & equipment foundation	85 days	Tue 1/6/21	Tue 24/8/21	Backfill and construction turbine block & equipment foundation
160	Excavation & Pile Caps & Tie Beams + Slabs (Turbo Block South)	45 days	Sat 17/4/21	Mon 31/5/21	
161	Construction of internal drainage & on-grade slab	90 days	Wed 1/9/21	Mon 29/11/21	Construction of internal drainage & on-grade slab
162	Construction turbine block columns and upper portion for plant embed installation	83 days	Wed 25/8/21	Mon 15/11/21	Construction turbine block columns and upper portion for plant embed installation
163	Concrete Turbine upper part foundation	15 days	Fri 31/12/21	Fri 14/1/22	
164	Construction of Lube Oil Room	14 days	Tue 30/11/21	Fri 28/1/22	
165	Concrete RC walls	115 days	Thu 7/9/21	Thu 30/12/21	Concrete RC walls
166	ABFW Works	60 days	Thu 4/11/21	Sun 2/1/22	
167	Building Services Works	45 days	Sat 15/1/22	Mon 28/2/22	
168	Remove temporary falsework and scaffolding for installation of power generator	13 days	Mon 7/2/22	Sat 19/2/22	
169	Section B2 - (iv) G/F of L12 MSB including the Condenser Pit, Circulating Water Pipe Pit and equipment foundations between GL 12-B to 12-C and 12-1 to 12-6 for the installation of condenser	377 days	Fri 4/12/20	Wed 15/12/21	
170	Area Possession & Clearance	45 days	Fri 4/12/20	Sun 17/1/21	
171	Subletting / Fabrication / Delivery (for MSB L12 civil)	150 days	Fri 25/12/20	Sun 23/5/21	
172	Excavation to foundation level at ELS SP Type A & C	80 days	Fri 1/1/21	Sun 21/3/21	
173	Install CW Outlet pipe	85 days	Mon 22/3/21	Mon 14/6/21	
174	Construction of CW Outlet Box + lowest tie beam & caps	40 days	Mon 22/3/21	Fri 30/4/21	
175	Construction of pile caps & tie beams & sump pits up to +2.7mPD	26 days	Sat 1/5/21	Wed 26/5/21	
176	Backfill & Construction of CW Inlet Box + tie beams	71 days	Thu 27/5/21	Thu 5/8/21	Backfill & Construction of CW Inlet Box + tie beams
177	Construction of pile caps & tie beams at SunShadeCover Area	45 days	Tue 15/6/21	Thu 29/7/21	
178	Backfill and Construction ground beams & trenches	28 days	Thu 27/5/21	Mon 5/7/21	
179	Construction of indoor underground drainage	14 days	Fri 13/8/21	Thu 26/8/21	Construction of indoor underground drainage
180	Backfill & construction on-grade slabs	60 days	Sun 1/8/21	Wed 29/9/21	Backfill & construction on-grade slabs
181	Construction Column casting and RC walls & equipment foundations	50 days	Thu 30/9/21	Thu 18/11/21	Construction Column casting and RC walls & equipment foundations
182	ABFW Works	15 days	Fri 19/11/21	Fri 3/12/21	
183	Building Services Works	20 days	Fri 26/11/21	Wed 15/12/21	
184	Mis. Works and Ready for condenser move in	25 days	Wed 17/11/21	Wed 15/12/21	
185	Section C - (i) Roads and external grounds surrounding L12 MSB and L12 HRSG in addition to the southern & eastern areas mentioned above in Area F5	408 days	Fri 4/12/20	Sat 15/1/22	
186	Area Possession & Clearance	30 days	Fri 4/12/20	Sat 2/1/21	
187	Subletting / Fabrication / Delivery	210 days	Fri 25/12/20	Thu 22/7/21	
188	Complete substructure & Steel Erection works for MSB	0 days	Tue 17/8/21	Tue 17/8/21	Complete substructure & Steel Erection works for MSB
189	Construction all utilities deeper than 2m from future road level	30 days	Wed 18/8/21	Thu 16/9/21	Construction all utilities deeper than 2m from future road level
190	Construction of cable trenches	30 days	Fri 17/9/21	Sat 16/10/21	Construction of cable trenches
191	Backfill and lay temporary paving	91 days	Sun 17/10/21	Sat 15/1/22	
192	Section C - (ii) Whole of L12 MSB including the pipe and cable rack along south façade of L12 MSB with all underground utilities at Area F4 including C.W. Inlet and Outlet Culvert except the deferred works	483 days	Fri 4/12/20	Thu 31/3/22	
193	Area Possession & Clearance	45 days	Fri 4/12/20	Sun 17/1/21	
194	Subletting / Fabrication / Delivery	120 days	Fri 25/12/20	Fri 23/4/21	
195	Construction of pile caps & tie beams at Transformer Area	180 days	Sun 31/1/21	Thu 29/7/21	
196	Backfill and on-grade slab at transformer Area	160 days	Sun 11/4/21	Thu 7/10/21	Backfill and on-grade slab at transformer Area
197	Construction of Fire Walls at Transformer Area	45 days	Fri 8/10/21	Sun 21/11/21	
198	Excavation & Construction Blow Down Sump pit (SP Type B)	140 days	Wed 14/4/21	Tue 31/8/21	Excavation & Construction Blow Down Sump pit (SP Type B)
199	Preparation for S.Steelwork Erection	7 days	Sat 5/6/21	Fri 11/6/21	
200	Structural Delivery & Erection (Turbine Hall North fr G.L. 1-3/H->B)	67 days	Sat 12/6/21	Tue 17/8/21	Structural Delivery & Erection (Turbine Hall North fr G.L. 1-3/H->B)
201	Structural Delivery & Erection (Equipment Floors)	33 days	Wed 18/8/21	Sun 19/9/21	Structural Delivery & Erection (Equipment Floors)
202	Structural Delivery & Erection (Turbine Hall South + East Elevation)	47 days	Mon 20/9/21	Mon 15/11/21	Structural Delivery & Erection (Turbine Hall South + East Elevation)
203	Joint Tightening and touch up coating	99 days	Sat 3/7/21	Wed 24/11/21	Joint Tightening and touch up coating
204	External Scaffolding Erection	97 days	Thu 15/7/21	Mon 22/11/21	External Scaffolding Erection
205	Construction 1/F RC Slab	14 days	Mon 20/9/21	Sun 3/10/21	Construction 1/F RC Slab
206	Construction 2/F RC Slab	7 days	Mon 20/9/21	Sun 10/10/21	Construction 2/F RC Slab
207	Construction 3/F RC Slab	18 days	Thu 30/9/21	Sun 17/10/21	Construction 3/F RC Slab
208	Construction 4/F RC Slab	7 days	Thu 7/10/21	Sun 24/10/21	Construction 4/F RC Slab
209	Construction 5/F RC Slab	44 days	Mon 25/10/21	Tue 7/12/21	
210	Construction 6/F RC Slab	14 days	Wed 1/12/21	Tue 14/12/21	
211	Construction Upper Roof RC Slab	10 days	Sun 12/12/21	Fri 24/12/21	
212	Construction Main Roof RC Slab	39 days	Tue 12/10/21	Fri 19/11/21	Construction Main Roof RC Slab
213	Construction Defer Roof RC Slab (G.L. G-H)	14 days	Wed 1/12/21	Tue 14/12/21	
214	Construction of Staircase ST-01 & lift shaft & machine room	130 days	Fri 27/8/21	Mon 3/1/22	
215	Construction M/F RC Slab	14 days	Wed 1/9/21	Tue 14/9/21	Construction M/F RC Slab
216	Lift Installation	60 days	Tue 4/1/22	Fri 4/3/22	
217	Construction of Staircase ST-02 except defer work	68 days	Mon 11/10/21	Fri 24/12/21	
218	Construction of RC plinth, kerbs & parapet Walls	40 days	Sat 20/11/21	Wed 29/12/21	
219	Erection of Skylight & Roof Features	50 days	Fri 26/11/21	Fri 14/1/22	
220	Waterproofing & Flooring at Roof	34 days	Thu 30/12/21	Thu 17/2/22	
221	ABFW Works	100 days	Fri 8/10/21	Sat 15/1/22	
222	Building Services Works	105 days	Tue 16/11/21	Mon 28/2/22	
223	Metal Cladding, Windows and Louvres incl. roof feature	185 days	Mon 23/8/21	Wed 23/2/22	
224	Removal of external scaffolding	90 days	Wed 1/12/21	Mon 28/2/22	
225	Installation of Catwalk at south elevation	26 days	Mon 31/1/22	Tue 1/3/22	
226	Cladding, ABWF & BS Works	30 days	Wed 2/3/22	Thu 31/3/22	
227	Removal of tempoary works & clearance for plant erection contractor	30 days	Sun 30/1/22	Mon 28/2/22	
228	Section C - (iii) Link Bridge between L11 and L12 MSB includin their associated A&A at L11 MSB	493 days	Fri 4/12/20	Sun 10/4/22	
229	BD Consent	0 days	Fri 4/12/20	Fri 4/12/20	
230	Subletting / Fabrication / Delivery (For BS and ABWF)	250 days	Fri 25/12/20	Tue 31/8/21	Subletting / Fabrication / Delivery (For BS and ABWF)
231	Clearing Works and plant set-up	30 days	Fri 3/12/21	Sat 1/1/22	
232	Dismantle of north scaffold for link bridge erection	0 days	Tue 25/1/22	Tue 25/1/22	
233	A&A works at South of L11 MSB	30 days	Fri 3/12/21	Sat 1/1/22	
234	Erection of link bridge structural steel	30 days	Sun 2/1/22	Mon 31/1/22	
235	Casting of bridge deck	11 days	Tue 1/2/22	Fri 11/2/22	
236	Metal roofing installation	24 days	Sat 12/2/22	Mon 7/3/22	
237	ABWF work	30 days	Sun 20/2/22	Mon 21/3/22	
238	BS Works	20 days	Tue 22/3/22	Sun 10/4/22	
239	Ready for power cable laying work by others	0 days	Sun 10/4/22	Sun 10/4/22	
240	Section D - (ii) No. 5 Chimney with L12 Steel Flue Liner	810 days	Fri 1/1/21	Tue 21/3/23	
241	Area Possession & Clearance	45 days	Fri 1/1/21	Sun 14/2/21	
242	Subletting / Fabrication / Delivery (For Civil and BS for Microwave Antenna and Equipment)	120 days	Fri 8/1/21	Fri 7/5/21	
243	Excavation & Pile Cap & Backfill	90 days	Sat 2/1/21	Thu 1/4/21	
244	Tower Crane erection	30 days	Tue 11/5/21	Wed 9/6/21	
245	Construction of Wind Shiled + clearance for internal floors and flue+Ground slab	308 days	Fri 2/4/21	Mon 4/4/22	
246	Structural steel fabrication & Delivery for floors and staircase	201 days	Mon 3/1/22	Fri 22/7/22	
247	Erection of steel floors	79 days	Tue 19/4/22	Wed 6/7/22	
248	Construction of G/F room incl. Microwave Antenna Rm	45 days	Thu 7/7/22	Sat 20/8/22	
249	Construction of 1/F RC slab	8 days	Sat 13/8/22	Sat 20/8/22	
250	Construction of 2/F RC Slab	8 days	Fri 5/8/22	Fri 12/8/22	
251	Construction of 3/F RC slab	8 days	Thu 28/7/22	Thu 4/8/22	
252	Construction of 4/F RC slab	8 days	Thu 7/7/22	Thu 14/7/22	
253	Construction of Roof RC slab	61 days	Tue 21/6/22	Sat 20/8/22	
254	Removal of tower Crane	7 days	Sun 21/8/22	Sat 27/8/22	
255	Steel Flue fabrication and delivery	145 days	Sat 5/3/22	Wed 27/7/22	
256	Set up for steel flue installation	60 days	Tue 5/7/22	Fri 2/9/22	
257	Lift & install steel flue liner + cladding works	161 days	Thu 28/7/22	Wed 4/1/23	
258	Lift installation	100 days	Mon 12/12/22	Tue 21/3/23	
259	Installation Louvre & Doors	30 days	Thu 5/1/23	Fri 3/2/23	
260	Mis works, Demobilization and ready for gas duct connection	17 days	Thu 5/1/23	Sat 21/1/23	
261	Section D (i) - ABWF and BS Works at Microwave Antenna Room and Chimney Windshield for installation of microwave and antenna	102 days	Tue 1/3/22	Fri 10/6/22	
262	Completion of Microwave Antenna Room	0 days	Tue 1/3/22	Tue 1/3/22	
263	Remaining ABWF & BS Works	100 days	Thu 3/3/22	Fri 10/6/22	
264	Section E - (i) Administration and Control Building (Transformer Room)	332 days	Fri 4/12/20	Sun 31/10/21	
265	Area Possession & Clearance + BD consent	60 days	Fri 4/12/20	Mon 1/2/21	
266	Subletting / Fabrication / Delivery (For Civil+BS+ABWF)	100 days	Tue 2/2/21	Wed 12/5/21	
267	Excavation works	45 days	Fri 4/12/20	Sun 17/1/21	
268	Main Earth Grid Installation	45 days	Sun 3/1/21	Tue 16/2/21	
269	Pile cap and Tie Beam	45 days	Sun 3/1/21	Tue 16/2/21	
270	Tower Crane Erection and modification works	49 days	Wed 10/2/21	Tue 30/3/21	
271	Substructure + Bearing walls + On grade slabs	115 days	Wed 17/2/21	Fri 11/6/21	
272	Construction of RC up to 1/F incl. staircases	69 days	Sat 12/6/21	Thu 19/8/21	
273	ABWF at G/F	52 days	Fri 10/9/21	Sun 31/10/21	ABWF at G/F
274	Section E (ii) Handover G/F, 1/F, 2/F & Hoisting Well	452 days	Fri 4/12/20	Mon 28/2/22	
275	Clearing Works and plant set-up	21 days	Sun 31/10/21	Sat 20/11/21	
276	Subletting / Fabrication / Delivery (For NSC Lift)	180 days	Sun 3/1/21	Sat 31/7/21	
277	Construction of RC up to 2/F incl. staircases	25 days	Sat 14/8/21	Mon 13/9/21	Construction of RC up to 2/F incl. staircases
278	Construction of RC up to 3/F incl. staircases	20 days	Tue 2/9/21	Tue 21/9/21	Construction of RC up to 3/F incl. staircases
279	Tempoary Hoist erection	14 days	Wed 22/9/21	Tue 5/10/21	Tempoary Hoist erection
280	Construction of RC up to 4/F incl. staircases	20 days	Thu 16/9/21	Tue 5/10/21	Construction of RC up to 4/F incl. staircases



Contract No. 19/83002 Lamma Power Station Extension Civil and Building Works for Unit L12

Master Programme

ID	Task Name	Duration	Start	Finish	
281	Construction of RC up to R/F incl. staircases	25 days	Thu 30/9/21	Sun 24/10/21	
282	Construction of RC up to lift machine room	21 days	Mon 25/10/21	Sun 14/11/21	
283	Construction of RC up to UR/F	21 days	Mon 15/11/21	Sun 5/12/21	
284	External Wall Finish, Cladding + Windows and Louvres + Features	138 days	Thu 30/9/21	Mon 14/2/22	
285	ABWF at 1/F	95 days	Fri 8/10/21	Mon 10/1/22	
286	ABWF at 2/F	96 days	Fri 15/10/21	Tue 18/1/22	
287	Building Services Works at G/F, 1/F, 2/F & Hoisting Well	147 days	Tue 5/10/21	Mon 28/2/22	
288	Section E (iii) Whole of Administration and Control Building	544 days	Fri 4/12/20	Tue 31/5/22	
289	Subletting / Fabrication / Delivery (For BS+ABWF)	127 days	Sat 23/10/21	Sun 20/3/22	
290	Construction of New UG Grey Water Tank	60 days	Mon 20/3/23	Thu 18/5/23	
291	Submission of WW046 for commencement	60 days	Wed 19/1/22	Sat 19/3/22	
292	ABWF at 3/F	120 days	Mon 25/10/21	Mon 21/2/22	
293	ABWF at 4/F	90 days	Wed 24/11/21	Mon 21/2/22	
294	ABWF at R/F	60 days	Wed 15/12/21	Sat 12/2/22	
295	ABWF at UR/F + Lift Machine Room	45 days	Wed 5/1/22	Fri 18/2/22	
296	Bridge Erection & Connection	28 days	Mon 7/2/22	Mon 28/3/22	
297	Installation of Raised floors	60 days	Fri 7/1/22	Fri 29/4/22	
298	Removal of external scaffolding	39 days	Mon 24/1/22	Wed 9/3/22	
299	Waterproofing & screeding	60 days	Mon 6/12/21	Thu 3/2/22	
300	Removal of Tower Crane	7 days	Thu 10/3/22	Wed 16/3/22	
301	External utilities and road work	45 days	Tue 8/2/22	Thu 14/4/22	
302	Building Services Works	160 days	Tue 7/12/21	Sun 15/5/22	
303	False ceiling after BS works	54 days	Tue 29/3/22	Sat 21/5/22	
304	Submission of WW046 for completion	30 days	Wed 9/3/22	Thu 7/4/22	
305	Submission of FS inspection	14 days	Fri 13/5/22	Thu 26/5/22	
306	Submission for OP Inspection	14 days	Wed 18/5/22	Tue 31/5/22	
307	Section F (i) - Gas Receiving Station and L12 Gas Receiving Station Equipment Room (GRS) Area Extension at Area F14	548 days	Tue 1/6/21	Wed 30/11/22	
308	Area Possession & Clearance + BD consent	90 days	Tue 1/6/21	Sun 29/8/21	Area Possession & Clearance + BD consent
309	Subletting / Fabrication / Delivery	30 days	Tue 22/6/21	Wed 21/7/21	
310	Installation of pipe pile at north of GRS (VO)	134 days	Mon 5/7/21	Mon 15/11/21	Installation of pipe pile at north of GRS (VO)
311	Construction Equipment room extension	145 days	Sun 31/10/21	Thu 24/3/22	
312	Modification of existing drainage	45 days	Fri 25/3/22	Sun 8/5/22	
313	Excavation & earthing for Skid foundations	21 days	Mon 9/5/22	Sun 29/5/22	
314	Construction of Skid foundation	45 days	Mon 30/5/22	Wed 13/7/22	
315	Construct underground utilities and drainage	45 days	Thu 14/7/22	Sat 27/8/22	
316	Backfill and road works	60 days	Sun 28/8/22	Wed 26/10/22	
317	Relocate / install new fencing for completion	21 days	Thu 27/10/22	Wed 16/11/22	
318	Mis. Work and ready for OP inspection	14 days	Thu 17/11/22	Wed 30/11/22	
319	Section F (ii) - Pipe and Cable rack and external work at Area F9A and F9B	515 days	Sat 2/1/21	Tue 31/5/22	
320	BD consent + Site Possession at Area F9A & F9B	90 days	Sat 2/1/21	Thu 1/4/21	
321	Excavation & Plate load test	30 days	Mon 1/11/21	Tue 30/11/21	Excavation & Plate load test
322	Construction new footing for pipe rack	30 days	Wed 1/12/21	Thu 30/12/21	
323	Underground utilities and road works for completion	11 days	Thu 31/3/22	Tue 31/5/22	
324	Structural Steel fabrication & Delivery	90 days	Sat 2/10/21	Thu 30/12/21	
325	Erection of new pipe rack	70 days	Fri 31/12/21	Thu 10/3/22	
326	Mis. Work and ready for OP inspection	21 days	Wed 11/5/22	Tue 31/5/22	
327	Section F (iii) - No. 5 CW Equipment Room, pipe and cable rack, external works at Area F10	457 days	Tue 1/6/21	Wed 31/8/22	
328	Area Possession & Clearance + BD consent	90 days	Tue 1/6/21	Sun 29/8/21	Area Possession & Clearance + BD consent
329	Subletting / Fabrication / Delivery For ABWF + BS	150 days	Wed 2/6/21	Fri 29/10/21	Subletting / Fabrication / Delivery For ABWF + BS
330	Installation of Sheet Pile (VO)	85 days	Tue 1/6/21	Tue 24/8/21	Installation of Sheet Pile (VO)
331	Consent for ELS Works	28 days	Wed 25/8/21	Tue 21/9/21	Consent for ELS Works
332	Excavation & Plate load test	30 days	Wed 22/9/21	Thu 21/10/21	Excavation & Plate load test
333	Construction new footing for equipment room	68 days	Thu 23/12/21	Mon 28/2/22	
334	Superstructure for equipment room	60 days	Tue 1/3/22	Fri 29/4/22	
335	ABWF Works	45 days	Sat 30/4/22	Mon 13/6/22	
336	BS Works	30 days	Wed 1/6/22	Thu 30/6/22	
337	Construction RC Wall & plinths & drainage at Chlorinator area	45 days	Wed 30/3/22	Fri 13/5/22	
338	External wall finish & remove scaffolding	30 days	Sat 14/5/22	Sun 12/6/22	
339	Excavation & Plate load test for pipe rack extension (For F45-47 & F49)	30 days	Sat 16/10/21	Sun 14/11/21	Excavation & Plate load test for pipe rack extension (For F45-47 & F49)
340	Construction new footing for pipe rack (For F45-47 & F49)	45 days	Mon 15/11/21	Wed 29/12/21	
341	Underground utilities and road works for completion	60 days	Thu 30/12/21	Sun 27/2/22	
342	Structural Steel fabrication & Delivery	90 days	Sun 12/12/21	Fri 11/3/22	
343	Backfilling and prepare for steel erection	12 days	Mon 28/2/22	Fri 11/3/22	
344	Excavation & Plate Load test for pipe rack extension (For F48 F56)	14 days	Wed 30/3/22	Tue 12/4/22	
345	Construction of new footing for pipe rak (For F48 & F56)	14 days	Wed 13/4/22	Tue 26/4/22	
346	Erection of new pipe rack (For F48 & F56)	65 days	Tue 3/5/22	Wed 6/7/22	
347	Erection of new pipe rack (For F45-47 & F49)	70 days	Sat 12/3/22	Fri 20/5/22	
348	Mis. Work and ready for OP inspection	56 days	Thu 7/7/22	Wed 31/8/22	
349	Section G (i) - External Work surrounding Area F11	145 days	Sat 4/6/22	Wed 26/10/22	
350	Area Possession & Clearance after handover from No. 5 Intake Contractor	30 days	Sat 4/6/22	Sun 3/7/22	
351	Subletting / Fabrication / Delivery	30 days	Sat 4/6/22	Sun 3/7/22	
352	Submission WW0046 for commencement	30 days	Sat 4/6/22	Sun 3/7/22	
353	Construct Underground utilities and drainage	30 days	Mon 20/6/22	Tue 19/7/22	
354	Install new FS Hydrant	20 days	Mon 20/6/22	Sat 9/7/22	
355	Submission WW0046 for compleieon	30 days	Sat 30/7/22	Sun 28/8/22	
356	Construction Road extension	58 days	Sat 30/7/22	Sun 25/9/22	
357	Construction road paving and install fencing	30 days	Mon 26/9/22	Tue 25/10/22	
358	Ready for OP inspection	14 days	Thu 13/10/22	Wed 26/10/22	
359	Section G (ii) - External Works at Area F12 & F13	666 days	Fri 4/12/20	Fri 30/9/22	
360	Area Possession & Clearance after handover from other	45 days	Fri 4/12/20	Sun 17/1/21	
361	Subletting / Fabrication / Delivery	180 days	Thu 4/3/21	Mon 30/8/21	Subletting / Fabrication / Delivery
362	Excavation	21 days	Sat 23/10/21	Fri 12/11/21	Excavation
363	Submission WW0046 for commencement	30 days	Sat 13/11/21	Sun 12/12/21	
364	Construct Underground utilities and drainage	90 days	Mon 13/12/21	Sat 12/3/22	
365	Install new FS Hydrant	30 days	Sun 13/3/22	Mon 11/4/22	
366	Submission WW0046 for completion	30 days	Tue 12/4/22	Wed 11/5/22	
367	Construction Road extension	127 days	Thu 12/5/22	Thu 15/9/22	
368	Complete with Mis. Works for completion	15 days	Fri 16/9/22	Fri 30/9/22	
369	Section G (iii) - FS Modification works along South Seafront Road at Area F15	183 days	Fri 1/4/22	Fri 30/9/22	
370	Area Possession & Clearance after handover from other	45 days	Fri 1/4/22	Sun 15/5/22	
371	Subletting / Fabrication / Delivery	21 days	Fri 1/4/22	Thu 21/4/22	
372	Temporary Traffic Arrangement approval	14 days	Fri 1/4/22	Thu 14/4/22	
373	Utilities scanning and expose existing FS	14 days	Fri 15/4/22	Thu 28/4/22	
374	Determine new FS alignment	21 days	Fri 29/4/22	Thu 19/5/22	
375	Submission to FSD	14 days	Fri 20/5/22	Thu 2/6/22	
376	Modification of FS	60 days	Fri 3/6/22	Mon 1/8/22	
377	Backfill and reinstatment + report to FSD	60 days	Tue 2/8/22	Fri 30/9/22	
378	Section G (iv) - 275kV cable trenches and External Works at Area F16	518 days	Sat 1/5/21	Fri 30/9/22	
379	Area Possession & Clearance	60 days	Sat 1/5/21	Tue 29/6/21	
380	Subletting / Fabrication / Delivery	210 days	Wed 17/11/21	Tue 14/6/22	
381	Temporary Traffic Arrangement approval	60 days	Sat 1/5/21	Tue 29/6/21	
382	Removal of aboveground services	60 days	Wed 30/6/21	Sat 28/8/21	Removal of aboveground services
383	Utilities scanning and expose existing UU	30 days	Sun 29/8/21	Mon 27/9/21	Utilities scanning and expose existing UU
384	Arrange of diversion existing UG utilities	90 days	Tue 28/9/21	Sun 26/12/21	
385	Construct new cable trenches	173 days	Mon 27/12/21	Fri 17/6/22	
386	Realignment / install new UG utilities	60 days	Sat 18/6/22	Tue 16/8/22	
387	Backfill and reinstaate & ready for cable laying by others	45 days	Wed 17/8/22	Fri 30/9/22	
388	Section G (v) - Shunt Reactor Compound and External Works at Area F17	666 days	Fri 4/12/20	Fri 30/9/22	
389	Temporary Traffic Arrangement approval	45 days	Fri 4/12/20	Sun 17/1/21	
390	Subletting / Fabrication / Delivery	100 days	Fri 25/12/20	Sat 3/4/21	
391	BD approval & consent for pipe pile installation	90 days	Fri 4/12/20	Wed 3/3/21	
392	Area Possession & Clearance	14 days	Thu 4/3/21	Wed 17/3/21	
393	Removal of aboveground services	21 days	Thu 18/3/21	Wed 7/4/21	
394	Utilities scanning and expose existing UU	15 days	Thu 8/4/21	Thu 22/4/21	
395	Arrange of diversion existing UG utilities	45 days	Fri 23/4/21	Sun 6/6/21	
396	Install pipe piles	61 days	Sun 23/5/21	Thu 22/7/21	
397	BA14 for pipepile and BD consent for ELS	28 days	Fri 23/7/21	Thu 19/8/21	BD consent for ELS
398	Excavation & install earthing	35 days	Fri 20/8/21	Thu 23/9/21	Excavation & install earthing
399	Construct Pile Caps and Tie Beams	45 days	Fri 24/9/21	Sun 7/11/21	Construct Pile Caps and Tie Beams
400	Backfill & Erect scaffold	21 days	Mon 8/11/21	Sun 28/11/21	Backfill & Erect scaffold
401	Construction of SRC Walls	75 days	Mon 29/11/21	Fri 11/2/22	
402	Wall finish and remove scaffolding	24 days	Sat 12/2/22	Mon 7/3/22	
403	Construct new cable trenches	60 days	Tue 8/3/22	Fri 6/5/22	
404	Install new UG Utilities, Backfill and reinstaate & ready for cable laying by Others for DAX1	55 days	Thu 7/4/22	Tue 31/5/22	
405	Realignment / install new UG utilities (for DAX2, APX1 & APX3)	117 days	Sat 7/5/22	Wed 31/8/22	
406	Backfill and reinstaate & ready for cable laying by others (for DAX2, APX1, & APX3)	30 days	Thu 1/9/22	Fri 30/9/22	
407	Section G (vi) - 275kV cable trenches and External Works at Area F18	397 days	Sat 1/5/21	Wed 1/6/22	
408	Temporary Traffic Arrangement approval	45 days	Sat 1/5/21	Mon 14/6/21	
409	Subletting / Fabrication / Delivery	60 days	Tue 15/6/21	Fri 13/8/21	
410	Area Possession & Clearance	15 days	Sat 1/5/21	Sat 15/5/21	
411	Removal of aboveground services	30 days	Sun 16/5/21	Mon 14/6/21	
412	Utilities scanning and expose existing UU	45 days	Tue 15/6/21	Thu 29/7/21	
413	Arrange of diversion existing UG utilities	60 days	Fri 30/7/21	Mon 27/9/21	Arrange of diversion existing UG utilities
414	Construct new cable trenches	172 days	Tue 28/9/21	Fri 18/3/22	
415	Realignment / install new UG utilities	45 days	Sat 19/3/22	Mon 2/5/22	
416	Backfill and reinstaate & ready for cable laying by others	30 days	Tue 3/5/22	Wed 1/6/22	
417	Section G (vii) - Flood wall at No. 5 CW Intake Area along HUA at Area F20A	521 days	Fri 4/12/20	Sun 8/5/22	
418	Area Possession & Clearance	30 days	Fri 4/12/20	Sat 2/1/21	
419	Subletting / Fabrication / Delivery	60 days	Fri 25/12/20	Mon 22/2/21	
420	Temporary Traffic Arrangement approval	300 days	Fri 4/12/20	Wed 29/9/21	Temporary Traffic Arrangement approval
421	ELS BD approval & consent	90 days	Fri 18/12/20	Wed 17/3/21	
422	Demolition of existing carriageway	30 days	Thu 11/11/21	Fri 10/12/21	
423	Removal of aboveground services	21 days	Thu 30/9/21	Wed 20/10/21	Removal of aboveground services
424	Utilities scanning and expose existing UU	21 days	Thu 21/10/21	Wed 10/11/21	Utilities scanning and expose existing UU
425	Arrange of diversion existing UG utilities	30 days	Sat 11/12/21	Sun 9/1/22	
426	Excavation and construction of new Flood wall	65 days	Mon 10/1/22	Tue 15/3/22	
427	Realignment / install new UG utilities	30 days	Wed 16/3/22	Thu 14/4/22	
428	Backfill and construct new carriageway	18 days	Fri 15/4/22	Mon 2/5/22	
429	Mis. Work for completion	6 days	Tue 3/5/22	Sun 8/5/22	
430	Section G (viii) - Flood wall at No. 5 CW Intake Area along HUA at Area F20B	365 days	Fri 1/10/21	Fri 30/9/22	
431	Area Possession & Clearance	45 days	Fri 1/10/21	Sun 14/11/21	Area Possession & Clearance
432	Subletting / Fabrication / Delivery	90 days	Fri 22/10/21	Wed 19/1/22	
433	Temporary Traffic Arrangement approval	14 days	Fri 1/10/21	Thu 14/10/21	Temporary Traffic Arrangement approval
434	ELS BD approval & consent	90 days	Fri 15/10/21	Wed 12/1/22	



Contract No. 19/83002 Lamma Power Station Extension Civil and Building Works for Unit L12

Master Programme

Task Name	Duration	Start	Finish				
435 Demolition of existing carriageway	60 days	Fri 1/10/21	Mon 29/11/21				
436 Removal of aboveground services	21 days	Tue 30/11/21	Mon 20/12/21				
437 Utilities scanning and expose existing UU	21 days	Tue 21/12/21	Mon 10/1/22				
438 Arrange of diversion existing UG utilities	30 days	Tue 11/1/22	Wed 9/2/22				
439 Install Sheetpiles	55 days	Thu 10/2/22	Tue 5/4/22				
440 BA14 for sheetpile and BD consent for ELS	28 days	Wed 6/4/22	Tue 3/5/22				
441 Excavation and construction of new Flood wall	90 days	Wed 4/5/22	Mon 1/8/22				
442 Realignment / install new UG utilities	30 days	Tue 2/8/22	Wed 31/8/22				
443 Backfill and construct new carriageway	21 days	Thu 1/9/22	Wed 21/9/22				
444 Mis. Work for completion	9 days	Thu 22/9/22	Fri 30/9/22				
445 Section G (ix) - Bund wall modification works at South Seafront Road at Area F21	316 days	Fri 4/12/20	Fri 15/10/21				
446 Area Possession & Clearance	45 days	Fri 4/12/20	Sun 17/1/21				
447 Subletting / Fabrication / Delivery	90 days	Fri 25/12/20	Wed 24/3/21				
448 Temporary Traffic Arrangement approval	165 days	Fri 4/12/20	Mon 17/5/21				
449 ELS BD approval & consent	0 days	Thu 17/12/20	Thu 17/12/20				
450 Demolition of existing carriageway	14 days	Tue 18/5/21	Mon 31/5/21				
451 Removal of aboveground services	14 days	Tue 1/6/21	Mon 14/6/21				
452 Utilities scanning and expose existing UU	21 days	Tue 15/6/21	Mon 5/7/21				
453 Arrange of diversion existing UG utilities (include FS pipe under 17/8002)	40 days	Tue 6/7/21	Sat 14/8/21	g UG utilities (include FS pipe under 17/8002)			
454 Excavation and expose existing bund wall & demolish	18 days	Wed 28/7/21	Sat 14/8/21	ting bund wall & demolish			
455 Construction new bund wall for road junction	21 days	Sat 4/9/21	Fri 24/9/21	Construction new bund wall for road junction			
456 Realignment / install new UG utilities (include FS pipe under 17/8002)	60 days	Sun 1/8/21	Wed 29/9/21	Realignment / install new UG utilities (include FS pipe under 17/8002)			
457 Backfill and construct new carriageway	16 days	Thu 30/9/21	Fri 15/10/21	Backfill and construct new carriageway			
458 Mis. Work for completion	5 days	Mon 11/10/21	Fri 15/10/21	Mis. Work for completion			
459 Section G (x) - DAX Cable Diversion Works (from Part I to Part IV)	758 days	Fri 4/12/20	Sat 31/12/22				
460 Temporary Traffic Arrangement approval	14 days	Fri 4/12/20	Thu 17/12/20				
461 Subletting / Fabrication / Delivery	90 days	Fri 25/12/20	Wed 24/3/21				
462 Area Possession & Clearance	45 days	Fri 4/12/20	Sun 17/1/21				
463 Identification of existing cable trench	7 days	Mon 18/1/21	Sun 24/1/21				
464 Part 1 Re-excavation works incl.construction of joint bay (at Water Reservoir Road)	246 days	Mon 25/1/21	Mon 27/9/21	Part 1 Re-excavation works incl.construction of joint bay (at Water Reservoir Road)			
465 Part 1 Re-excavation works incl construction of joint bay (other than Reservoir road base on revised routing)	310 days	Mon 25/1/21	Tue 30/11/21				
466 Part 2 Re-excavation works incl. joint bay	120 days	Mon 1/11/21	Mon 28/2/22				
467 Part 3 Re-excavation works incl. joint bay	242 days	Mon 1/11/21	Thu 30/6/22				
468 Part 4 Re-excavation works incl. joint bay & new oil tank pits	92 days	Sat 1/10/22	Sat 31/12/22				
469 Backfill & Reinstatement Part 1	61 days	Mon 1/11/21	Fri 31/12/21				
470 Backfill & Reinstatement Part 2	61 days	Sun 1/5/22	Thu 30/6/22				
471 Backfill & Reinstatement Part 3	61 days	Thu 1/9/22	Mon 31/10/22				
472 Section H - All remaining works shall be completed for reporting completion to BD and ready for OP inspection (PS1.4.4)	775 days	Wed 17/11/21	Sun 31/12/23				
473 Deferred works (MSB & HRSG) Listed in PS 1.4.4	272 days	Wed 17/11/21	Mon 15/8/22				
474 Construction ofL12 MSB roof between GL12-G to 12-H and 12-2 to 12-6 after the overhead crane installation by the Employer's Specialist Contractors	38 days	Wed 17/11/21	Fri 7/1/22				
475 Construction of walls ofL12 MSB below 1/F along GL 12-6 from GL12-B to 12-C and the associated staircases including the enclosure walls between G/F and 1/F. The Contractor shall allow access for the Employer's Specialist Contractors to use the hoisting we	92 days	Mon 16/5/22	Mon 15/8/22				
476 Provision in associated with hoisting well	21 days	Mon 6/6/22	Sun 26/6/22				
477 Construction of internal partition wall at 1/F ofL12 MSB along GL 12-C from GL 12-2 to 12-3 AND North Façade at 1/F of L12 MSB along GL 12-1 from GL 12-B to 12-C	30 days	Sat 16/4/22	Sun 15/5/22				
478 Construction of metal fence and the associated Fire Services (F.S.) installations and installation of removable shelter at Transformer Area	92 days	Mon 16/5/22	Mon 15/8/22				
479 Deferred works (DAX1 and DAX2) Listed in PS 1.4.4	334 days	Wed 1/2/23	Sun 31/12/23				
480 Backfilling of whole DAX1 compartment inside existing joint bay "STJ12" and the new oil tank pit A located aside existing joint bay "STJ12".	59 days	Wed 1/2/23	Fri 31/3/23				
481 Re-excavation of whole DAX2 compartment inside existing joint bay "STJ12".	61 days	Tue 1/8/23	Sat 30/9/23				
482 Backfilling of whole DAX2 compartment inside existing joint bay "STJ12" and the new oil tank pit B located aside existing joint bay "STJ12".	61 days	Wed 1/11/23	Sun 31/12/23				
483 Deferred works (External Work) Listed in PS 1.4.4	121 days	Thu 1/12/22	Fri 31/3/23				
484 Final reinstatement of access roads and pavement surrounding and within L12 MSB and L12 HRSG area	62 days	Thu 1/12/22	Tue 31/1/23				
485 Installation of trench cover and road reinstatement of gas pipe and cable trenches within Area F5, F14, F16, F17 and F18.	90 days	Sun 1/1/23	Fri 31/3/23				
486 Backfilling and road-reinstatement of 275kV cable trenches	90 days	Sun 1/1/23	Fri 31/3/23				
487 All Remaining work ready for OP inspection	0 days	Tue 28/2/23	Tue 28/2/23				
488 STATUTORY SUBMISSION, INSPECTION & APPROVAL	560 days	Tue 16/11/21	Mon 29/5/23				
489 WSD Statutory Submission, Inspection and Approval WWO Part I to III Submission / Approval	256 days	Tue 16/11/21	Fri 29/7/22				
490 WSD : Submit to WSD Form WWO 046 Part I to II - FOR ACB Building (for Ext Works at later stage)	0 days	Tue 16/11/21	Tue 16/11/21				
491 WSD: Vetting Form WWO 046 Part I and II Submission	90 days	Wed 17/11/21	Mon 14/2/22				
492 WSD: Issued of Form WWO 046 Part III by WSD - FOR ACB Building	0 days	Tue 15/2/22	Tue 15/2/22				
493 WSD: Prepare for 1st Amendment for Plumbing Plan	60 days	Tue 15/2/22	Fri 15/4/22				
494 WSD: Submit to WSD 1st Amendment for Plumbing Plan	0 days	Fri 15/4/22	Fri 15/4/22				
495 WSD: Vetting of Plumbing Plan by WSD	60 days	Sat 16/4/22	Tue 14/6/22				
496 WSD: 1st Approval for Plumbing Plan by WSD	0 days	Tue 14/6/22	Tue 14/6/22				
497 WSD: Prepare and Submit for Final Amendment for Plumbing Plan	45 days	Wed 15/6/22	Fri 29/7/22				
498 WSD: Vetting and Final Approval for Plumbing Plan by WSD	0 days	Fri 29/7/22	Fri 29/7/22				
499 WSD Statutory Submission, Inspection and Approval WWO Part IV to V Fire Services Water Submission / Approval	33 days	Fri 29/7/22	Wed 31/8/22				
500 WSD: Form WWO 046 Part IV Submission (FS)	0 days	Fri 29/7/22	Fri 29/7/22				
501 WSD: WSD Recieved Form WWO046 Part IV and arrange for inspection (FS)	7 days	Sat 30/7/22	Fri 5/8/22				
502 WSD: WSD Inspection (FS)	7 days	Sat 6/8/22	Fri 12/8/22				
503 WSD: WWO 046 Part V Endorsement by WSD (FS)	12 days	Sat 13/8/22	Wed 24/8/22				
504 WSD: WSD Processing Water Supply Connection Certificate (FS)	7 days	Thu 25/8/22	Wed 31/8/22				
505 WSD: Issue by WSD Water Supply Connection Certificate (FS)	0 days?	Wed 31/8/22	Wed 31/8/22				
506 WSD Statutory Submission, Inspection and Approval WWO Part IV to V Potable /Flush Water Submission / Approval	60 days	Fri 19/8/22	Tue 18/10/22				
507 WSD: Form WWO 046 Part IV Submission (Fresh/Flush)	0 days	Fri 19/8/22	Fri 19/8/22				
508 WSD: WSD Acknowledge Form WWO 046	6 days	Sat 20/8/22	Thu 25/8/22				
509 WSD: WSD Inspection with Testing to lead (Fresh/Fluhs)	12 days	Fri 26/8/22	Tue 6/9/22				
510 WSD: Cleansing/Disinfecting Water Tanks / Piping System (Fresh/Flush)	6 days	Wed 7/9/22	Mon 12/9/22				
511 WSD: Collection of Sample for Testing at Accredited Lab (Fresh/Flush)	12 days	Tue 13/9/22	Sat 24/9/22				
512 WSD:Accredited Lab Testing Report of Sample to WSD	12 days	Sun 25/9/22	Thu 6/10/22				
513 WSD: Vetting of Test Report by WSD	6 days	Fri 7/10/22	Wed 12/10/22				
514 WSD: Issue of WWO 046 Part V (Fresh/Flush)	0 days	Wed 12/10/22	Wed 12/10/22				
515 WSD: WSD Processing WW01005 Water Certification (Fresh/Flush)	6 days	Thu 13/10/22	Tue 18/10/22				
516 WSD: Issue by WSD WWO 1005 Water Certification (Fresh/Flush)	0 days	Tue 18/10/22	Tue 18/10/22				
517 EMSD LIFT Statutory Submission, Inspection and Approval	45 days	Sat 26/3/22	Mon 9/5/22				
518 EMSD: Submission of Lift Form LE5 to EMSD	12 days	Sat 26/3/22	Wed 6/4/22				
519 EMSD: EMSD Makes arrangement for Lift Installation	5 days	Thu 7/4/22	Mon 11/4/22				
520 EMSD: EMSD Inspection to Lift Installation	14 days	Tue 12/4/22	Mon 25/4/22				
521 EMSD: Processing Lift Certificate (Form LE6)	14 days	Tue 26/4/22	Mon 9/5/22				
522 EMSD: Lift Issuance of Form 6 (Lift Certificate)	0 days	Mon 9/5/22	Mon 9/5/22				
523 HKE Transformer Final Inspection	120 days	Thu 30/6/22	Thu 27/10/22				
524 TX Room: Invite HKE For Transformer Room Inspection	7 days	Thu 30/6/22	Wed 6/7/22				
525 TX Room: Give Access to Transformer Room for HKE Contractor	0 days	Wed 6/7/22	Wed 6/7/22				
526 TX Room: Move-IN HKE Transformer Equipments	5 days	Thu 7/7/22	Mon 11/7/22				
527 TX Room: Install HKE Transformer, MEP Works & Testing	90 days	Tue 12/7/22	Sun 9/10/22				
528 TX Room: HKE Power Energization / Inspection	6 days	Mon 10/10/22	Sat 15/10/22				
529 TX Room: Metering Installation	12 days	Sun 16/10/22	Thu 27/10/22				
530 TX Room: HKE Power-ON Date	0 days	Thu 27/10/22	Thu 27/10/22				
531 DSD Drainage Completion Memo	65 days	Sun 2/10/22	Mon 5/12/22				
532 DSD: CCTV Survey Report on Completed Drainage	30 days	Sun 2/10/22	Mon 31/10/22				
533 DSD: Submitted CCTV Report & Form HPB1 of Completed Drainage to DSD For Technical Audit	7 days	Tue 1/11/22	Mon 7/11/22				
534 DSD: Completed Drainage System including TMC Inspection/Technical Audit by DSD	14 days	Tue 8/11/22	Mon 21/11/22				
535 DSD: Preparation of Drainage Connection Completion Memo by DSD	14 days	Tue 22/11/22	Mon 5/12/22				
536 DSD: Issue of Drainage Connection Completion Memo by DSD	0 days	Mon 5/12/22	Mon 5/12/22				
537 EPD Submission, Inspection and Approval	60 days	Thu 30/6/22	Mon 29/8/22				
538 EPD: License Application to EPD under APCO (Cap 311) for Generator Sets	0 days	Thu 30/6/22	Thu 30/6/22				
539 EPD: Vetting of Application by EPD under APCO (Cap 311) for Generator Sets	60 days	Fri 1/7/22	Mon 29/8/22				
540 EPD: Approval from EPD under APCO (Cap 311) for Generator Sets Installation	0 days	Mon 29/8/22	Mon 29/8/22				
541 FSD VAC Statutory Submission, Inspection and Approval	150 days	Wed 20/7/22	Fri 16/12/22				
542 Preparation of FSD VAC Drawings and Submission to HEC	60 days	Wed 20/7/22	Sat 17/9/22				
543 HEC: Review and Approval	30 days	Sun 18/9/22	Mon 17/10/22				
544 Preparation of VAC Drawings and Submission to FSD	30 days	Tue 18/10/22	Wed 16/11/22				
545 FSD: Review and Approval	30 days	Thu 17/11/22	Fri 16/12/22				
546 FSD Statutory Submission, Inspection and Approval	91 days	Tue 28/2/23	Mon 29/5/23				
547 Testing and Commissioning (Individual System - FSI Related)	45 days	Tue 28/2/23	Thu 13/4/23				
548 FSD: All Sections FS Ingration Test by NSC_BS	15 days	Fri 14/4/23	Fri 28/4/23				
549 FSD: Completion of FS Integration Test by NSC_BS for FS314/501	0 days	Fri 28/4/23	Fri 28/4/23				
550 FSD: Submit Form 213/314 & Form 501 Request for Inspection	0 days	Fri 28/4/23	Fri 28/4/23				
551 FSD: FSD Makes Arrangement for Inspection	7 days	Sat 29/4/23	Fri 5/5/23				
552 FSD: FSD Inspection	12 days	Sat 6/5/23	Wed 17/5/23				
553 FSD: Completion of FS Inspection	0 days	Wed 17/5/23	Wed 17/5/23				
554 FSD: FSD Processing FS Certificate Form 172	12 days	Thu 18/5/23	Mon 29/5/23				
555 FSD: Issue of Fire Services FS Certificate Form 172	0 days	Mon 29/5/23	Mon 29/5/23				
556 PRACTICAL COMPLETION	216 days	Tue 30/5/23	Sun 31/12/23				
557 BD Inspection	97 days	Tue 30/5/23	Sun 3/9/23				
558 BD: Application Form BA13 for OP Application	21 days	Tue 30/5/23	Mon 19/6/23				
559 BD: BD Inspection Date	15 days	Tue 20/6/23	Tue 4/7/23				
560 BD: Reinspection date with defects and rectification works	60 days	Wed 5/7/23	Sat 2/9/23				
561 BD: Obtain Occupation Permit (OP) from BD	1 day	Sun 3/9/23	Sun 3/9/23				
562 As-Built Drawings & Handover Documentation	120 days	Wed 14/6/23	Wed 11/10/23				
563 Prepare and Submit As-Built Drawings & Handover Documentation	45 days	Wed 14/6/23	Fri 28/7/23				
564 Review and Approval	45 days	Sat 29/7/23	Mon 11/9/23				
565 As-Built Drawings & Handover Documentation - Revision by MC	30 days	Tue 12/9/23	Wed 11/10/23				
566 Revised As-Built Drawings & Handover Documentation - Final Submission	0 days	Wed 11/10/23	Wed 11/10/23				
567 Completion of the Whole Contract Works	119 days	Mon 4/9/23	Sun 31/12/23				
568 1st Client Inspection for Review and Comments	30 days	Mon 4/9/23	Tue 3/10/23				
569 Defects and Rectification works	60 days	Wed 4/10/23	Sat 2/12/23				
570 2nd Client Inspection	14 days	Sun 3/12/23	Sat 16/12/23				
571 Minor Defects Rectification Works and Final Inspection	15 days	Sun 17/12/23	Sun 31/12/23				
572 PRACTICAL COMPLETION	0 days	Sun 31/12/23	Sun 31/12/23				

Task Name	Duration	Start	Finish	September 2021												October 2021												November 2021												
				01	04	07	10	13	16	19	22	25	28	01	04	07	10	13	16	19	22	25	28	31	03	06	09	12	15	18	21	24	27							
1	19-83014 - Civil Works for No. 5 C.W. Intake and Cable Bridge at Lamma Power Station Extension	664 days	Mon 10/05/20	Fri 12/23/22																																				
2	Contract Details	518 days	Mon 10/05/20	Thu 07/07/22																																				
15	Submission	308 days	Wed 10/28/20	Wed 11/10/21																																				
36	Procurement	166 days	Mon 10/19/20	Thu 05/13/21																																				
45	No.5 C.W. Intake	589 days	Mon 10/05/20	Tue 09/27/22																																				
46	Erect of Hoarding and Door Gate	12 days	Mon 10/05/20	Sat 10/17/20																																				
47	Install Monitoing Instrumentation	16 days	Sat 10/17/20	Fri 11/06/20																																				
54	ELS works for No. C.W. Intake	323 days	Tue 12/29/20	Sat 01/29/22																																				
55	Installation of pipe pile wall	147 days	Tue 12/29/20	Wed 06/30/21																																				
64	Excavate upto +4.50mPD	6 days	Fri 07/02/21	Thu 07/08/21																																				
65	Installation the 1st row of waling (WT1) and strut (CS1)	12 days	Fri 07/09/21	Thu 07/22/21																																				
66	Installation of 1st row of Tie Back	65 days	Tue 07/13/21	Mon 09/27/21																																				
67	RW01 (01-22)	8 days	Fri 08/13/21	Sat 08/21/21																																				
68	RW01 (23-70)	16 days	Mon 08/23/21	Thu 09/09/21																																				
69	RW01F (01-28)	10 days	Tue 07/13/21	Fri 07/23/21																																				
70	RW01F (29-77)	17 days	Sat 08/21/21	Thu 09/09/21																																				
71	RW01F (78-98)	7 days	Fri 08/13/21	Fri 08/20/21																																				
72	Pull Out Test for Tie Back	2 days	Sat 09/25/21	Mon 09/27/21																																				
73	Excavate upto +2.70mPD	6 days	Tue 09/28/21	Tue 10/05/21																																				
74	Installation the 2nd row of waling (WT2) and strut (CS2)	12 days	Wed 10/06/21	Wed 10/20/21																																				
75	Installation of 2nd row of Tie Back	85 days	Tue 08/10/21	Fri 11/19/21																																				
76	RW02 (01-22)	8 days	Wed 10/06/21	Fri 10/15/21																																				
77	RW02 (23-70)	16 days	Sat 10/16/21	Wed 11/03/21																																				
78	RW02F (01-28)	10 days	Tue 08/10/21	Fri 08/20/21																																				
79	RW02F (29-77)	17 days	Fri 10/15/21	Wed 11/03/21																																				
80	RW02F (78-98)	7 days	Wed 10/06/21	Wed 10/13/21																																				
81	Pull Out Test for Tie Back	2 days	Thu 11/18/21	Fri 11/19/21																																				
82	Excavate uoto +1.00mPD	6 days	Sat 11/20/21	Fri 11/26/21																																				
83	Excavate upto -7.50mPD	52 days	Sat 11/27/21	Sat 01/29/22																																				
84	Temporary removal of sea wall	236 days	Fri 05/21/21	Fri 03/04/22																																				
85	Application of Marine Permit	78 days	Fri 05/21/21	Mon 08/23/21																																				
86	Install silt curtain wall	2 days	Thu 11/25/21	Sat 11/27/21																																				
87	Tempoary removal of sea wall (USS)	26 days	Sat 11/27/21	Wed 12/29/21																																				
88	Removal of existing culvert off-site (USS)	26 days	Thu 12/30/21	Sat 01/29/22																																				
89	Prepare formation level for intake chamber	26 days	Mon 01/31/22	Fri 03/04/22																																				
90	Construction of No. 5 C.W. Intake Chamber	266 days	Sat 09/25/21	Thu 08/18/22																																				
91	Off-site fabrication for Bottom Part of Intake Chamber (From -7.20mPD to +3.20mPD	107 days	Sat 09/25/21	Sat 02/05/22																																				
92	Semisubmersible Barge Return to Casting Yard	0 days	Sat 09/25/21	Sat 09/25/21																																				
93	Setup work on Semisubmersible Barge	26 days	Sat 09/25/21	Wed 10/27/21																																				
94	Bottom Slab (from -7.20mPD to -5.50mPD, 1596m3)	31 days	Thu 10/28/21	Thu 12/02/21																																				
95	External Wall (from -6.35mPD to -5.50mPD, 701m3)	11 days	Fri 12/03/21	Wed 12/15/21																																				
96	External Wall (from -5.00mPD to -1.50mPD, 380m3)	13 days	Thu 12/16/21	Mon 01/03/22																																				
97	External Wall (from -1.50mPD to +3.00mPD, 571m3)	18 days	Tue 01/04/22	Mon 01/24/22																																				
98	Temporary metal gate and support frame	8 days	Tue 01/25/22	Sat 02/05/22																																				
99	Delivery of Precast instake Chamber	3 days	Wed 03/02/22	Fri 03/04/22																																				
100	Installation of Precast intake Chamber	12 days	Sat 03/05/22	Fri 03/18/22																																				
101	In-situ casting for Top Part of Intake Chamber (From +3.00mPD to +7.20mPD)	118 days	Sat 03/26/22	Thu 08/18/22																																				
115	Reinstatement of sea wall	104 days	Sat 03/26/22	Tue 08/02/22																																				
119	Backfilling Works and Strut removal	122 days	Sat 03/19/22	Tue 08/16/22																																				
126	Steel Gantry Frame at No. 5 C.W. Intake Chamber	36 days	Wed 08/17/22	Tue 09/27/22																																				
129	E&M Works	240 days	Sat 11/27/21	Sat 09/17/22																																				
130	Temporary diversion of existing drainage system (from MH807 to MH804)	12 days	Sat 11/27/21	Fri 12/10/21																																				
131	Earthing System	26 days	Fri 08/19/22	Sat 09/17/22																																				
132	Sump Pump fro Drainage System	26 days	Fri 08/19/22	Sat 09/17/22																																				
133	Drainage Improvement Works	26 days	Wed 08/03/22	Thu 09/01/22																																				
134	External works including CW Inlet Culvert at Area F8C	210 days	Fri 03/12/21	Wed 11/24/21																																				
147	No 5 CW Equipment Room, pipe and cable rack, external works at Area F10	426 days	Wed 04/14/21	Thu 09/15/22																																				
168	External Work Surrounding Area F11	115 days	Fri 08/12/22	Fri 12/23/22																																				
175	Cable Bridge	444 days	Wed 11/11/20	Mon 05/16/22																																				

