

ID	Task Name	Duration	2021			
			Jul	Aug	Sep	
1	Civil and Building Works for Unit 11 and Associated Works	1197 days	▼ 30 Sep '21			
2	Contract Key Dates	1197 days				
3	Contract Commencement Date	0 days				
4	Completion Dates	1044 days	▼ 30 Sep '21			
5	Section A1 - Ground treatment installation works at Zone 1A	0 days				
6	Section A2 - Ground treatment installation works at Zone 1B	0 days				
7	Section A3 - Ground treatment installation works at Zone 2	0 days				
8	Section A4 - Ground treatment installation works at Zone 3	0 days				
9	Section A5 (i) - Ground treatment installation works at Zone 4 - Band drain installation	0 days				
10	Section A5 (ii) - Ground treatment installation works at Zone 4 - Surcharge filling	0 days				
11	Section A6 (i) - A&A Works for No. 4 C.W. Outfall at Area E18	0 days				
12	Section A6 (ii) - External works at Area E15	0 days				
13	Section B1 (i) - Area south of L11 MSB and HRSG from GL11-F eastwards leading to Chimney Road at Area E1 & E2	0 days				
14	Section B1 (ii) - Supporting structures for overhead cranes of L11 MSB including the associated roof structure except the roof deferred works	0 days				
15	Section B1 (iii) - FSRU Civil works at Area E13	0 days				
16	Section B2 - Retractable Cover D at Area E22	0 days				
17	Section B3 - External works at Area B1, D2 and D4	0 days				
18	Section C1 - Area south of L11 MSB from GL11-F westwards leading to Station Road at Area E3(A) & E3(B)	0 days				
19	Section C2 - (i) Southern part of L11 HRSG area and its surrounding at Area E7 except the deferred works for Lube Oil Storage Tank	0 days				
20	Section C2 - (ii) L11 Turbo Block foundation including the L11 MSB ground floor together with the equipment foundations between GL 11-F to 11-H and 11-1 to 11-6 for the installation of power generator, air inlet duct and lube oil reservoir	0 days				
21	Section C2 - (iii) G/F of L11 MSB including the Condenser Pit, Circulating Water Pipe Pit and equipment foundations between GL 11-B to 11-C and 11-1 to 11-6 for the installation of condenser	0 days				
22	Section D - (i) Roads and external grounds surrounding L11 MSB and L11 HRSG in addition to the southern & eastern areas mentioned above in Area E5 and E6	0 days				
23	Section D - (ii) Remaining northern part of L11 HRSG area and its surrounding in Area E6	0 days				
24	Section D - (iii) Whole of L11 MSB including the pipe and cable rack along south façade of L11 MSB with all underground utilities at Area E4 including C.W. Inlet and Outlet Culvert except the deferred works	0 days				
25	Section D - (iv) Link Bridge between L10 and L11 MSB and at the south of L11 MSB including their associated alternations & additions (A&A) Works at L10 MSB	0 days				
26	Section D - (v) Gas Duct Foundation, Pipe and Cable Rack and associated trench in Area E20	0 days				
27	Section E1 - (i) Link Bridge and Pipe and Cable Rack connecting L11 MSB to the western area of L11 MSB at Area E3	0 days				
28	Section E1 - (ii) Gas Receiving Station and L11 Gas Receiving Station Equipment Room (GRS) Area Extension at Area E16	0 days				
29	Section E1 - (iii) External Works at Area E15 (C)	0 days				
30	Section E2 - Pipe and Cable Rack and trench at west of Chimney Road and Pipe and Cable Rack at south of Middle Road at Area E8 and E19	0 days				
31	Section E3 - Gas Pipe Support Foundation and Pipe Trench and associated external works at Area E14, E15 (A) and E15 (B)	0 days				
32	Section E4 - 275kV cable trenching works connecting the 275kV Switching Station Extension and L11 MSB at Area E9 (A)	0 days				
33	Section F - 275kV Station Building Extension and associated works at Area E17	0 days				
34	Section G - A&A Works at No. 4 C.W. Intake at Area E12	0 days				
35	Section H - L11 Steel flue liner at No. 4 Chimney	0 days				

ID	Task Name	Duration	2021		
			Jul	Aug	Sep
36	Section I - (i) 275kV cable trenching works connecting the 275kV Switching Station Extension and L11 MSB at Area E9 (B)	0 days			
37	Section I - (ii) Interconnector 2 Trench Modification Works at Area E10	0 days			
38	Section J - (i) Demolition of Retractable Cover A&B & (ii) Foundation of LMX Light Oil Storage Tank Nos. 3 & 4 and A&A for Existing Bund Wall at	0 days	4		
39	Section K1 - External works at Area 15 (E) and 15(F)	0 days			
40	Section K2 - Removal of Southern Bund and External Works at Area D5, D6 and D7	0 days			
41	Section K3 - All remaining works shall be completed for reporting completion to BD and ready for OP inspection	0 days			
42	General & Preliminary	318 days			
43	Set up Temporary Site Office and Utilities	90 days			
44	Permit Applications & Statuary Submissions	120 days			
45	Existing Utilities scanning & Excavation Permit	45 days			
46	Tower Crane erection 2@MSB, 1@ 275	50 days			
47	Submission and Approval	554 days			
48	Method Statement / Temp Work Submission & Approval from HEC for General Works	240 days			
49	BD Approval & Consent (If required)	120 days			
50	BIM Model, CSD & CBWD Submission & Approval from HEC	200 days			
51	Structure Steelwork Connection Design Submission & BD Approval	60 days			
52	Structure Steelwork Shop Drawing & Approval	60 days			
53	Metal Cladding, louvre & windows submission & BD Approval	60 days			
54	Metal Cladding, louvre & windows shop drawing submission	60 days			
55	Order, Off Site Fabrication and Delivery (S. Steel & Cladding & louvres)	180 days			
56	Retractable Cover D BD Submission & Approval	90 days			
57	No. 4 C.W. Outfall A&A BD 1st Submission	90 days			
58	Submission & Approval of Steel Flue Assessment Report and Design Drawings	60 days			
59	Submission and Approval of Steel Flue Design from BD	60 days			
60	Material Fabrication & Delivery for L11 Flue	100 days			
61	Folding Shutters Shop Drawing Submission & Approval	120 days			
62	Fabrication & Delivery of Folding Shutters	150 days			
63	Sewage Pump System Design submission & approval	90 days			
64	Fabrication & Delivery of Sewage Pump	180 days			
65	Other material submission & approval & delivery	300 days			
66	Coordination with the Employer's Specialist Contractors	478 days			
67	Installation of Puddle Pipes at C.W. outlet Culvert	7 days			
68	Installation of Puddle Pipes at C.W. Inlet Culvert	7 days			
69	Template setting at L11 Turbo Block Foundation	60 days			
70	Template setting of holding down bolts at HRSG column base	46 days			
71	I-beam / channel base installation on top of transformer foundations at Transformer Area	30 days			
72	Overhead crane erection at turbine hall using access through a temporary opening at L11 MSB roof between GL11-G to 11-H and 11-2 to 11-6	36 days			
73	Condenser assembly and erection using access through a temporary façade opening at L11 MSB below 1/F along GL 11-6 from GL11-B to 11-C including a clear space below 1/F between GL 11-B to 11-C	127 days			
74	Installation of power train equipment including air inlet duct using access through a temporary façade opening at L11 MSB below 1/F along GL 11-6 from GL11-F to 11-H including a clear space below 1/F of the above area	142 days			
75	Installation of embedded materials such as holding down bolts for equipment foundations - Commencement	30 days			
76	Section A1 & A2 - Ground treatment at Zone 1A & 1B	92 days			
77	Plant establishment for earthworks	7 days			
78	Backfilling and compaction from existing ground +4.5mPD to +5.5mPD	45 days			
79	Delivery of band drain	5 days			
80	Plant establishment for band drain (1st rig)	10 days			
81	Plant establishment for band drain (2nd rig)	7 days			
82	Plant establishment for band drain (3rd rig)	7 days			

4 and A&A for Existing Bund Wall at Area E21

Works at Area D5, D6 and D7

◆ Section K3 - All remain

ID	Task Name	Duration	2021		
			Jul	Aug	Sep
83	Vert. Band drain installation (1023 nos. x 44m)	45 days			
84	Deposition of surcharge up to +8.3mPD	45 days			
85	Section A3 - Ground treatment installation works at Zone 2	158 days			
86	Backfilling and compaction from existing ground +4.5mPD to +5.5mPD	30 days			
87	Delivery of band drain	6 days			
88	Vert. Band drain installation (1787 nos. x 44m)	50 days			
89	Deposition of surcharge up to +8.3mPD	60 days			
90	Additional Concrete Blocks + Extra Surcharge	60 days			
91	Section A4 - Ground treatment installation works at Zone 3	131 days			
92	Backfilling and compaction from existing ground +4.5mPD to +5.5mPD	12 days			
93	Vert. Band drain installation	60 days			
94	Deposition of surcharge up to +8.3mPD	45 days			
95	Possession of Part 1 Defer portion at Zone 3	0 days			
96	Vert. Band drain installation	10 days			
97	Possession of Part 2 Defer portion at Zone 3	0 days			
98	Vert. Band drain installation	7 days			
99	Surcharge at deferred portion	14 days			
100	Section A5 (i) - Ground treatment installation works at Zone 4	83 days			
101	Site Preparation for Vertical Band Drain	3 days			
102	Band drain installation	21 days			
103	Possession of Defer portion at Zone 4	0 days			
104	Vert. Band drain installation	28 days			
105	Section A5 (ii) - Surcharge works at Zone 4	30 days			
106	Deposition of surcharge up to +8.3mPD	30 days			
107	Section A6 (i) - A&A Works for No. 4 C.W. Outfall at Area E18	493 days			
108	BD Amendment, resubmission & approval for Jacking Pit	170 days			
109	Consent for Jacking Pit ELS	28 days			
110	Mobilization	0 days			
111	Jacking Pit Sheetpile Installation (incl. Stop work notice + CNY)	60 days			
112	Protective screen and preventive measure for U9 gas pipeline (VO)	28 days			
113	Provision of temp support for U10 gas pipeline (VO) upon RMA allow access	28 days			
114	ELS of jacking pit	30 days			
115	Pipe Jacking set up & ground strengthening	18 days			
116	Pipe Jacking	90 days			
117	Receiving Pit BD Approval	170 days			
118	Consent for Pipe & Sheet pile	28 days			
119	Receiving Pit Pipe & Sheet pile installation	30 days			
120	Consent for Receiving Pit ELS	28 days			
121	ELS of Receiving pit	40 days			
122	Allow modify existing outfall manhole for pipe jacking receiving	18 days			
123	Culvert Pipe Intallation & water test	55 days			
124	Inspection Manhole at Jacking Pit + backfill (Area E3(A))	18 days			
125	Manhole extension at Outfall no. 4 + backfill + Reinstate of Outfall Rd	45 days			
126	Sheetpile for L12 Outlet culvert (Connection to Jacking Pit)	45 days			
127	Consent + ELS for remaining jacking pit	75 days			
128	Outlet Culvert pipe installation + Thrust Box (remaining portion at A1 Area)	45 days			
129	Sheet pile for future extension along GRS	60 days			
130	Section A6 (ii) - External works at Area E15(D)	37 days			
131	Area possession & Clearance	6 days			
132	Road & Surface Works	31 days			
133	Section B1 (i) - Area south of L11 MSB and HRSG from GL11-F eastwards leading to Chimney Road at Area E1 & E2	375 days			
134	Area Possession & Clearance	0 days			
135	Excavation for CW Inlet Culvert (South of L11 HRSG)	21 days			
136	Installation CW Inlet Culvert pipe	30 days			
137	Construction of Thrust Box & Manholes,etc	14 days			
138	Backfill	21 days			
139	Install underground utilities	45 days			
140	Backfill and Temporary paving for Condensor Move in (E1)	14 days			
141	Backfill and Temporary paving for Condensor Move in (others)	30 days			
142	Section B1 (ii) - Supporting structures for overhead cranes of L11 MSB including the associated roof structure except the roof deferred works	482 days			
143	Area possession & Clearance	0 days			
144	Erection of turbine hall roof except defer work	0 days			

ID	Task Name	Duration	2021		
			Jul	Aug	Sep
145	Installation of crane griders	21 days			
146	Turbine hall wall claddings	60 days			
147	Section B1 (iii) - FSRU Civil works at Area E13 (GRS)	151 days			
148	Submission and approval for consent to work	0 days			
149	Civil & Building Works	130 days			
150	Ground reinstatement	21 days			
151	Section B2 - Retractable Cover D at Area E22	435 days			
152	Area Possession, Demolition and clearance work	60 days			
153	Revise Structural Form and BD resubmission & approval	150 days			
154	Foundation construction	60 days			
155	Backfill & Ground reinstatement	30 days			
156	Superstructure fabrication & delivery	90 days			
157	Superstructure erection	90 days			
158	E&M Installation and T&C	45 days			
159	Section B3 - External works at Area B1, D2 and D4	416 days			
160	Receive Area from HKE, Area Possession & Clearance	0 days			
161	Removal of existing paving for band drain under Section A5(i)	30 days			
162	Complete Vert. Band drain under Section A5(i)	0 days			
163	Ground preparation for B1, D2 & D4 for handover to Plant contractor	90 days			
164	Section C1 - Area south of L11 MSB from GL11-F westwards leading to Station Road at Area E3(A) & E3(B)	466 days			
165	Area Possession & Clearance	0 days			
166	Excavation for Type C (Area E3A)	21 days			
167	Installation CW Outlet Culvert Pipe connect to Type C1	21 days			
168	Installation CW Inlet Culvert pipe (South of L11 Condensor)	21 days			
169	Construction of Thrust Box	10 days			
170	Construction of Access Manhole	21 days			
171	Backfill	14 days			
172	Construction of Underaround drainage and utilities	60 days			
173	Construct Temp Paving for Condenser move in	45 days			
174	Section C2 - (i) Southern part of L11 HRSG area and its surrounding at Area E7 (No Defer Foundations)	295 days			
175	Area Possession & Clearance	0 days			
176	Excavation & Pile Caps & Tie Beams (HRSG South Area E7)	45 days			
177	Construction RC foundations	45 days			
178	Construction RC plinths	30 days			
179	Construction underground utilities	45 days			
180	Backfill & Construction on-grade slabs	35 days			
181	Backfill and Temporary paving	21 days			
182	Section C2 - (ii) L11 Turbo Block foundation including the L11 MSB ground floor together with the equipment foundations between GL 11-F to 11-H and 11-1 to 11-6 for the installation of power generator, air inlet duct and lube oil reservoir	496 days			
183	Area Possession & Clearance	0 days			
184	Excavation & Pile Caps & Tie Beams (MSBL11 - Turbo Block North)	70 days			
185	Excavation & Pile Caps & Tie Beams (MSBL11 - Turbo Block South)	30 days			
186	Backfill and construction turbine block foundations	21 days			
187	Construction of internal drainage	60 days			
188	Construction RC walls incl. G/F rooms	90 days			
189	Construction turbine block columns and upper portion for plant embed installation	21 days			
190	Concrete Turbine upper part foundation & clear falsework	52 days			
191	Section C2 - (iii) G/F of L11 MSB including the Condenser Pit, Circulating Water Pipe Pit and equipment foundations between GL 11-B to 11-C and 11-1 to 11-6 for the installation of condenser	466 days			
192	Area Possession & Clearance	0 days			
193	Excavation to foundation level at ELS Type A	18 days			
194	Construction of CW Outlet Box + lowest tie beam & caps	40 days			
195	Construction of pile caps & tie beams & hot well sump pit up to +2.5mPD	30 days			
196	Backfill & Construction of CW Inlet Box + tie beams	18 days			
197	Backfill and Construction ground beams & trenches	18 days			

ID	Task Name	Duration	2021		
			Jul	Aug	Sep
198	Construction of indoor underground drainage	12 days			
199	Backfill & construction on-grade slabs	10 days			
200	Construction Column casting and RC walls	30 days			
201	Metal Cladding & Louvres for GLB-C/1-6	60 days			
202	Mis. Works for plant erection	24 days			
203	Section D - (i) Roads and external grounds surrounding L11 MSB and L11 HRSG in addition to the southern & eastern areas mentioned above in Area E5 and E6	414 days			
204	Area Possession & Clearance	14 days			
205	Excavation for Type C1 and open sheet pile	75 days			
206	Install CW Outlet pipe & connect to previous	21 days			
207	Backfill	10 days			
208	Undeground utilities and trenches	60 days			
209	Construction of plant drainage, trenches & RC plinths	45 days			
210	Remaining Undeground utilities & backfill (West of Tx Bay)	75 days			
211	Section D - (ii) Remaining northern part of L11 HRSG area and its surrounding in Area E6	375 days			
212	Area Possession & Clearance	0 days			
213	Excavation & Pits & Pile Caps & Tie Beams (HRSG north Area E6)	45 days			
214	Construction RC foundations	45 days			
215	Construction RC plinths & HRSG Lift Pit & internal drainage	60 days			
216	Backfill Construction on-grade slabs	28 days			
217	Construction underground utilities	45 days			
218	Backfill, Remaining utilities and temporary paving	85 days			
219	Touch up and site clearance	13 days			
220	Section D - (iii) Whole of L11 MSB including the pipe and cable rack along south facade of L11 MSB with all underground utilities at Area E4 including C.W. Inlet and Outlet Culvert except the deferred works	526 days			
221	Area Possession & Clearance	0 days			
222	Construction of pile caps & tie beams at Transformer Area	60 days			
223	Excavation & Construction Blow Down Sum pit (Type B)	45 days			
224	Construction of pile caps & tie beams at SunShadeCover Area	45 days			
225	Preparation for S.Steelwork Erection	14 days			
226	Structural Delivery & Erection (Turbine Hall North fr G.L. 1-3/H->B)	30 days			
227	Structural Delivery & Erection (Equipment Floors)	45 days			
228	Structural Delivery & Erection (Turbine Hall South)	45 days			
229	Fire Coating Application at Joint	120 days			
230	External Scaffolding Erection	150 days			
231	Construction 1/F RC Slab	14 days			
232	Construction M/F RC Slab	7 days			
233	Construction 2/F RC Slab	14 days			
234	Construction 3/F RC Slab	14 days			
235	Construction 4/F RC Slab	14 days			
236	Construction 5/F RC Slab (Roof of turbine hall, except defer portion)	30 days			
237	Construction Roof RC Slab	14 days			
238	Construction Upper Roof RC Slab	12 days			
239	Construction Defer Roof RC Slab (G.L. G-H)	30 days			
240	Construction of Staircase ST-01 & lift shaft & machine room	120 days			
241	Construction of Staircase ST-02 except defer work	76 days			
242	Construction of RC plinth, kerbs & parapet Walls	30 days			
243	Erection of Skylight & Roof Features	45 days			
244	Waterproofing & Flooring at Roof	60 days			
245	ABFW Works from 1/F to 5/F equipment rooms	150 days			
246	Metal Cladding, Windows and Louvres incl. roof feature	100 days			
247	Removal of external scaffolding	60 days			
248	Building Services E&M Access & Installation	150 days			
249	Remaining and Mis. works for Plant erection Full Access	18 days			
250	Section D - (iv) Link Bridge between L10 and L11 MSB and at the south of L11 MSB including their associated alternations & additions (A&A) Works at L10 MSB	526 days			
251	Area Possession & Clearance	0 days			

ID	Task Name	Duration	2021		
			Jul	Aug	Sep
252	A&A works at South of L10 MSB	60 days			
253	Erection of link bridge structural steel	21 days			
254	Casting of bridge deck	7 days			
255	Metal roofing installation	14 days			
256	ABWF work	21 days			
257	Form new opening at MSB for final connection	14 days			
258	E&M Work for completion	21 days			
259	Section D - (v) Gas Duct Foundation, Pipe and Cable Rack and associated trench in Area E20	345 days			
260	Area Possession & Clearance + CNY	0 days			
261	Sheet pile installation & submit as-built	75 days			
262	Consent for excavation	28 days			
263	Excavation & plate load test	45 days			
264	Construction of foundation	45 days			
265	Backfill & Underground utitiies	30 days			
266	Remaining Pipe & cable rack and associated trenches in Area E20	115 days			
267	Section E1 - (i) Link BrIdge and Pipe and Cable Rack connecting L11 MSB to the western area of L11 MSB at Area E3	263 days			
268	Area Possession	0 days			
269	Excavation & construction of new foundation	40 days			
270	Backfill	10 days			
271	Erection of Structural steel	30 days			
272	Backfill & Ground works	55 days			
273	Section E1 - (ii) Gas Receiving Station and L11 Gas Receiving Station Equipment Room (GRS) Area Extension at Area E16	173 days			
274	Area Possession	0 days			
275	Removal of Surcharge and excavation	14 days			
276	Modification of Site Drainage	45 days			
277	Construction of new RC for GRS Equipment Room	75 days			
278	ABWF for GRS Equipment room	45 days			
279	E&M Installation	45 days			
280	Construction of new Gas pipe plinths & racks	45 days			
281	Backfill and construction site drainage	21 days			
282	External Paving and install new fencing	60 days			
283	Section E1 - (iii) External Works at Area E15 (C)	273 days			
284	Removal of Surcharge and excavation	45 days			
285	Underground drianage, Utilities and RC plinths	123 days			
286	Backfill and install surface utilities	45 days			
287	Roadwork	60 days			
288	Section E2 - Pipe and Cable Rack and trench at west of Chimney Road and Pipe and Cable Rack at south of Middle Road at Area E8 and E19	495 days			
289	BD consent + Site Possession @ Area E8	0 days			
290	Excavation & Plate load test	60 days			
291	Foundation and Trench constructions	90 days			
292	Backfill & underground utitiles + temp paving	60 days			
293	Excavation & plate load test @ E19	60 days			
294	Construction of foundations & trenches	45 days			
295	Backfill & underground utitiles	60 days			
296	Pipe & cable rack Erection	60 days			
297	Ground reinstatement	60 days			
298	Section E3 - Gas Pipe Support Foundation and Pipe Trench and associated external works at Area E14, E15 (A) and E15 (B)	173 days			
299	Removal of surcharge / site clearance	21 days			
300	Excavation & construction of pipe trench	30 days			
301	Construction of gas pipe support foundation	30 days			
302	Construction of underground drainage and utilities	60 days			
303	Backfill & road work	32 days			
304	Section E4 - 275kV cable trenching works connecting the 275kV Switching Station Extension and L11 MSB at Area E9 (A)	185 days			
305	Site possession	0 days			
306	Obtain Permit to work & Road close permit	10 days			

ID	Task Name	Duration	2021		
			Jul	Aug	Sep
307	Excavation & construction new cable trench to 275kV	45 days			
308	Excavation & construction new cable trench to L11MSB	130 days			
309	Section F - 275kV Station Building Extension and associated works at Area E17	709 days			
310	Installation of ELS for 275kV Switching Station near Staircase ST-3 and ST-6	14 days			
311	Construction of Staircase ST-3	110 days			
312	BD Amendment Approval on A&A	0 days			
313	BD Amendment Approval on A&A ST3 & Drainage	0 days			
314	OP inspection of Staircase ST-3	14 days			
315	Consent of New Foundation Works (Stage 1)	0 days			
316	Consent & BA10 for Demolition of Existing Staircase	0 days			
317	Demolition of Existing Staircase and Submit BA14A	14 days			
318	BD inspection for BA14A & Issue OP	28 days			
319	Consent & BA10 for New Foundation Work (Stage 2)	28 days			
320	Hoarding Modification	7 days			
321	Pile Cap & Tie Beam Construction (Stage 1)	98 days			
322	Erection of Tower Crane	40 days			
323	Pile Cap and Tie Beam (Stage 2)	21 days			
324	RC Construction up to 1/F (Stage 1)	30 days			
325	RC Construction up to 1/F (Stage 2)	75 days			
326	Construction of Staircase ST6	90 days			
327	Shop Drawing Submission & Approval of Structural Steel	45 days			
328	Structural Steel fabrication & Delivery	60 days			
329	Erection of Structural Steel GL 17~18	30 days			
330	Erection of Structural Steel GL 8~17	60 days			
331	Metal Cladding Delivery	60 days			
332	Metal Door, Window & Louvre Delivery	45 days			
333	Erection of Working Platform and Scaffold	150 days			
334	Install Decking	60 days			
335	RC Walls from 1/F @ GIS Hall	40 days			
336	Construction of 2/F RC slab	14 days			
337	Construction of R/F RC slab	21 days			
338	Construction of UR/F RC slab	14 days			
339	Construction of GIS Hall Floor	60 days			
340	Installation of Overhead Crane (By JEC)	60 days			
341	Construction of staircase ST4, ST5, Lift Shaft & Equip Floors	150 days			
342	Lift Installation	90 days			
343	Concrete of RC walls, plinths, kerb & parapet walls & New trench for LV Power	30 days			
344	ABWF Works @ G/F	50 days			
345	ABWF Works @ 1/F	50 days			
346	ABWF Works @ 2/F	75 days			
347	ABWF Works @ R/F	30 days			
348	ABWF Works @ UR/F	21 days			
349	Waterproofing Works at R/F & UR/F	45 days			
350	Building Services E&M Access & Installation & T&C	150 days			
351	Metal Cladding, Windows and Louvres incl. Roof Feature	90 days			
352	Shutter Erection	30 days			
353	Removal of External Scaffolding + Tower Crane	35 days			
354	External Underground Drainage and Utilities	30 days			
355	Road & Paving Reinstatement	30 days			
356	Ready for FSD & OP Inspection	0 days			
357	Section G - A&A Works at No. 4 C.W. Intake at Area E12	143 days			
358	Permit to work	0 days			
359	Erection of temp. platform	14 days			
360	Demolition work	30 days			
361	Modify existing slab openings	75 days			
362	Curing + Removal of platform	24 days			
363	Section H - L11 Steel flue liner at No. 4 Chimney	186 days			
364	Complete erection of L10 Steel flue	0 days			
365	Modification of erection equipment	21 days			
366	Erection temp. platform and demolition work	30 days			
367	Structural steel delivery & Erection	85 days			
368	Removal of temp. work	5 days			
369	Reinstatate G/F louvre wall and access door	45 days			
370	Section I - (i) 275kV cable trenching works connecting the 275kV Switching Station Extension and L11 MSB at Area E9 (B)	232 days			
371	Obtain Permit to work & Road close permit	0 days			
372	Excavation & construction new cable trench	160 days			
373	Re-excavate cable trench for cable laying	72 days			
374	Section I - (ii) Interconnector 2 Trench Modification Works at Area E10	275 days			
375	Obtain Permit to work & Road close permit	0 days			
376	Re-excavate & new cable trench for cable laying	275 days			

ID	Task Name	Duration	2021			
			Jul	Aug	Sep	
377	Section J - (i) Demolition of Retractable Cover A&B & (ii) Construction of new LOT 3 & 4	426 days				
378	Obtain permit to work & Road close permit	0 days				
379	Erection of Hoarding	21 days				
380	Removal of existing cover & structural steel	30 days				
381	Demolish of existing bund wall and staircases	45 days				
382	Demolish of existing slab & foundation	60 days				
383	Consent for new work	30 days				
384	Construction of new bund wall and foundation	100 days				
385	Construction of new oil separator	80 days				
386	Construct underground drainage and surface channel	40 days				
387	Construction on-grade slab	60 days				
388	Removal of hoarding and ground reinstatement	40 days				
389	Section K1 - External works at Area 15 (E) and 15(F)	365 days				
390	Removal of surcharge	30 days				
391	Construct new drainage and utilities work	200 days				
392	Road & Paving	135 days				
393	Section K2 - Removal of Southern Bund and External Works at Area D5, D6 and D7	365 days				
394	Demolition work	30 days				
395	Construct new drainage and utilities work	200 days				
396	Road & Paving	135 days				
397	Section K3 - All remaining works shall be completed for reporting completion to BD and ready for OP inspection (PS1.4.4)	623 days				30 Sep '21
398	Completion of remaining roof after over headcrane move in	30 days				
399	Construction of G/F Lube Oil Tank Room (BY TDK)	61 days				
400	Construction of wall and staircase at G/F after Condensor Move in	90 days				
401	Construction of Durasteel Steel wall panel after IBP installation	30 days				
402	Construction of Transformer fence wall, cladding & associated FS services	122 days				
403	Final restatement of road & paving around MSB & HRSG	122 days				
404	Installation of trench covers and gratings after plant installation	151 days				
405	Backfill and reinstatement after 275kV cable laying	122 days				Backfill and reinstatem

Revised Works Programme for 2no. DN1800 CW Outlet Pipes Installation - Culvert Outfall No. 4 + GRS Works

No.4 Outfall AA+GRS (Rev.13) (21-7-2021)

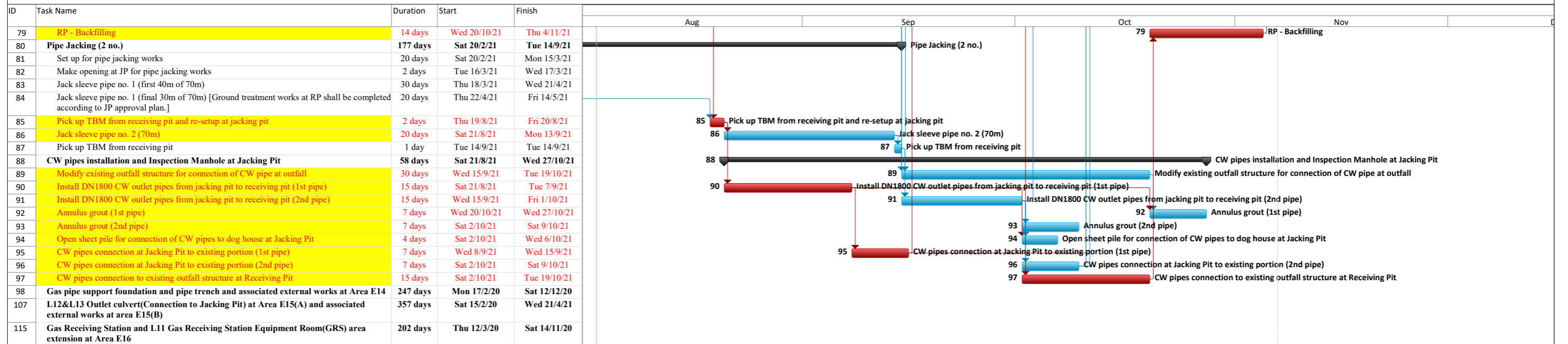
ID	Task Name	Duration	Start	Finish	Timeline (Aug, Sep, Oct, Nov)			
1	2 no. DN1800 CW Outlet Pipes Installation Overall Duration	905 days	Fri 2/11/18	Sat 6/11/21	2 no. DN1800 CW Outlet Pipes Installation Overall Duration			
2	Completion of pumping test	0 days	Wed 27/1/21	Wed 27/1/21				
3	A&A work for extension of outfall chamber up to +8.506mPD	0 days	Tue 19/1/21	Tue 19/1/21				
4	Complete ELS at jacking pit	0 days	Thu 11/2/21	Thu 11/2/21				
5	Complete ELS at receiving pit	0 days	Thu 5/8/21	Thu 5/8/21	◆5/8			
6	Make opening at JP for pipe jacking works	0 days	Mon 29/3/21	Mon 29/3/21				
7	Completion of ground treatment works at receiving pit	0 days	Thu 15/4/21	Thu 15/4/21				
8	Completion of jack sleeve pipe	0 days	Mon 13/9/21	Mon 13/9/21		◆13/9		
9	Install DN1800 CW outlet pipes from jacking pit to receiving pit	0 days	Fri 1/10/21	Fri 1/10/21			◆1/10	
10	Complete backfill for subsequence underground utilities construction at jacking pit	0 days	Sat 9/10/21	Sat 9/10/21				◆9/10
11	Jacking Pit and Thrust Block Portion	891 days	Fri 2/11/18	Thu 21/10/21	Jacking Pit and Thrust Block Portion			
12	Submission and approval of ELS plan amendment	30 days	Fri 2/11/18	Sat 1/12/18				
13	Re-submission and approval of ELS plan amendment	60 days	Wed 27/2/19	Sat 27/4/19				
14	Approval of re-submission (dated 2/5/2019; received on 21/5/2019)	0 days	Tue 21/5/19	Tue 21/5/19				
15	Consent application for sheetpile installation	28 days	Wed 22/5/19	Tue 18/6/19				
16	Submit BA14 for completion of Phase 1 & 2 sheetpile	23 days	Wed 19/6/19	Thu 11/7/19				
17	Amendment submission (re-phasing)	30 days	Fri 19/7/19	Sat 17/8/19				
18	Consent application for Phase 1 (new defined) excavation commencement	28 days	Sun 18/8/19	Sat 14/9/19				
19	Consent application for Ground Treatment Works	28 days	Tue 18/6/19	Mon 15/7/19				
20	Consent application for JP sheetpile opening works	28 days	Thu 2/7/20	Wed 29/7/20				
21	Submit BA14 for completion of Phase 1 (new defined) backfilling works	14 days	Sun 2/2/20	Sat 15/2/20				
22	Consent application for Phase 2 (new defined) excavation commencement	28 days	Sun 18/10/20	Sun 15/11/20				
23	Phase 2 (new defined) - Jacking Pit	868 days	Thu 29/11/18	Thu 21/10/21				
24	Mobilization	2 days	Thu 29/11/18	Fri 30/11/18				
25	Phase 1 - Install sheetpile for jacking pit	32 days	Wed 12/12/18	Mon 21/1/19				
26	Trial grouting for ground treatment works, sampling & testing	21 days	Fri 25/10/19	Mon 18/11/19				
27	Submit trial grouting assessment report	35 days	Tue 19/11/19	Tue 31/12/19				
28	Ground treatment works (full scale), sampling & testing	75 days	Thu 12/3/20	Sat 13/6/20				
29	Submit BA14 for completion of ground treatment works (including record plans and assessment report)	14 days	Thu 25/6/20	Wed 8/7/20				
30	Phase 2 (new defined)- Excavate and install struts and walings at jacking pit (including blinding layer)	28 days	Mon 11/1/21	Thu 11/2/21				
31	Water test for CW culvert pipe	14 days	Thu 16/9/21	Fri 1/10/21		31		
32	Phase 2 (new defined) - Backfilling	10 days	Mon 11/10/21	Thu 21/10/21			32	
33	Phase 1 (new defined) - Thrust Block Portion	247 days	Mon 6/5/19	Sat 29/2/20				
43	Receiving Pit	884 days	Tue 27/11/18	Sat 6/11/21	Receiving Pit			
44	Submission and approval of ELS plan	60 days	Tue 27/11/18	Fri 25/1/19				
45	Re-Submission and approval of ELS plan	60 days	Fri 15/3/19	Mon 13/5/19				
46	Approval of re-submission (dated 21/5/2019; received on 30/5/2019)	0 days	Thu 30/5/19	Thu 30/5/19				
47	Consent application for pipe pile and sheetpile installation	28 days	Mon 3/6/19	Sun 30/6/19				
48	Consent application for excavation commencement	28 days	Tue 23/2/21	Mon 22/3/21				
49	Advance works - Tree pruning, felling, removing street furniture, trial trench for existing utilities, break existing cable trap concrete support and slab, trial pit to existing outfall structure, protection work to nearby existing cable tray, hoarding	95 days	Mon 24/6/19	Wed 16/10/19				
50	Form platform	69 days	Thu 25/7/19	Wed 16/10/19				
51	Install pipe pile (30no.), sheetpile, pre-grout & curtain grout	150 days	Mon 21/10/19	Wed 22/4/20				
52	Submt BA14 for completion of installation of sheet pile, pipe pile	28 days	Thu 23/4/20	Wed 27/5/20				
53	Install pumping well & observation well	21 days	Thu 23/4/20	Tue 19/5/20				
54	Preparation works for road closure at outfall road (SI no. 45)	36 days	Tue 9/6/20	Wed 22/7/20				
55	Excavate and divert existing DN300&DN200 FS pipes	80 days	Thu 23/7/20	Tue 27/10/20				
56	Open cut excavation down to outfall chamber top	20 days	Wed 28/10/20	Thu 19/11/20				
57	Removal of existing mud inside outfall chamber and inspection for fabrication of penstock	5 days	Wed 9/12/20	Mon 14/12/20				
58	A&A work for extension of outfall chamber up to ~+6.0mPD + backfill	35 days	Fri 20/11/20	Fri 1/1/21				
59	A&A work for extension of outfall chamber up to +8.506mPD	15 days	Sat 2/1/21	Tue 19/1/21				
60	Install penstock	5 days	Tue 4/5/21	Sat 8/5/21				
61	Installation of baffle plate	4 days	Thu 19/8/21	Mon 23/8/21		61		
62	Metal works for outfall chamber	15 days	Mon 2/8/21	Wed 18/8/21				
63	Installation of top railing for outfall chamber	2 days	Fri 5/11/21	Sat 6/11/21				63
64	Pumping test	12 days	Thu 14/1/21	Wed 27/1/21				
65	Consent application for RP excavation work (stage 2A)	28 days	Thu 28/1/21	Mon 1/3/21				
66	Excavate RP, install struts and walings & blinding concrete (stage 2A) (before incident)	54 days	Tue 2/3/21	Mon 3/5/21				
67	Water leakage incident investigation and remedial works & BD submission	67 days	Tue 4/5/21	Tue 20/7/21				
68	Excavate RP & blinding concrete (stage 2A) (after incident)	14 days	Wed 21/7/21	Thu 5/8/21				
69	Demolition of existing outfall structure (1st stage for TBM extraction)	5 days	Fri 6/8/21	Wed 11/8/21		69		
70	Demolition of existing outfall structure (2nd stage remaining part)	14 days	Thu 12/8/21	Fri 27/8/21		70		
71	BD amendment for changes from horizontal grout to vertical grout	30 days	Tue 15/12/20	Wed 20/1/21				
72	Consent application for vertical grout block at RP (stage 2B)	28 days	Fri 15/1/21	Tue 16/2/21				
73	Preparation works for vertical grout	30 days	Tue 15/12/20	Wed 20/1/21				
74	Full Scale Ground treatment works (vertical grouting), sampling & testing (stage 2B)	50 days	Wed 17/2/21	Thu 15/4/21				
75	Submit BA14 for completion of ground treatment works (including records plans and assessment report)	14 days	Fri 16/4/21	Thu 29/4/21				
76	Consent application for pipe pile opening works	28 days	Fri 23/4/21	Thu 20/5/21				
77	Pipe pile opening works	7 days	Fri 6/8/21	Fri 13/8/21		77		
78	Extraction of TBM	4 days	Sat 14/8/21	Wed 18/8/21		78		

Paul Y Construction Co., Ltd.

Task ■ Split ■ Milestone ◆ Summary Project Summary External Tasks Critical Critical Split Progress

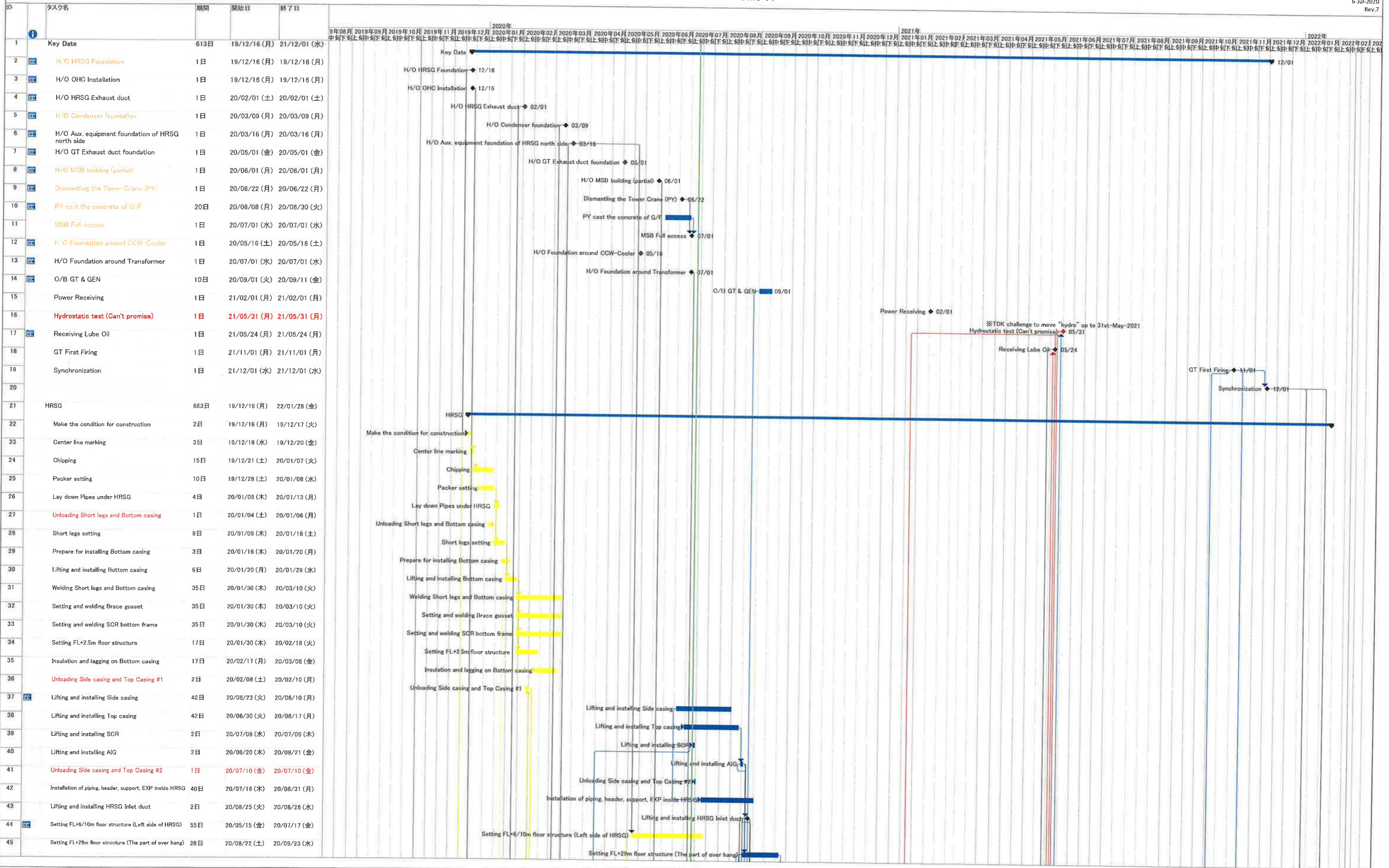
Revised Works Programme for 2no. DN1800 CW Outlet Pipes Installation - Culvert Outfall No. 4 + GRS Works

No.4 Outfall AA+GRS (Rev.13) (21-7-2021)



Construction Schedule of Unit-11

6-Jul-2020
Rev.7

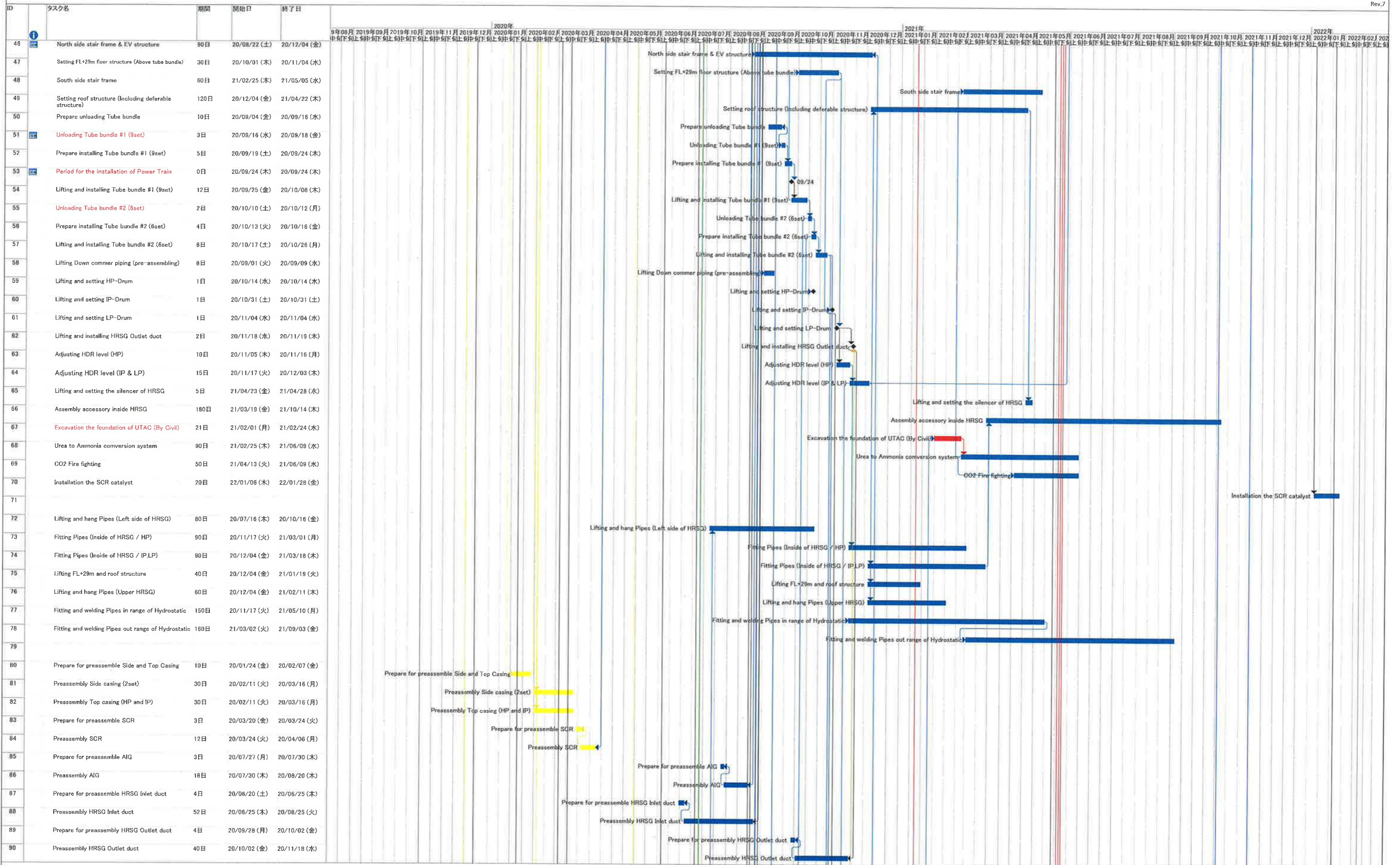


1. Change the starting date of installation below
 - ・ Installation HRSFG was re-started from 23rd-Jun
 - ・ Installation Exhaust duct was re-started from 15th-May
2. To consider that structure of Takasago portion is delayed

4. To consider the delay of H/O date from PDC
5. Add the schedule of the electric work and the replacement the gantry crane for CWP

Construction Schedule of Unit-11

6-Jul-2020
Rev.7

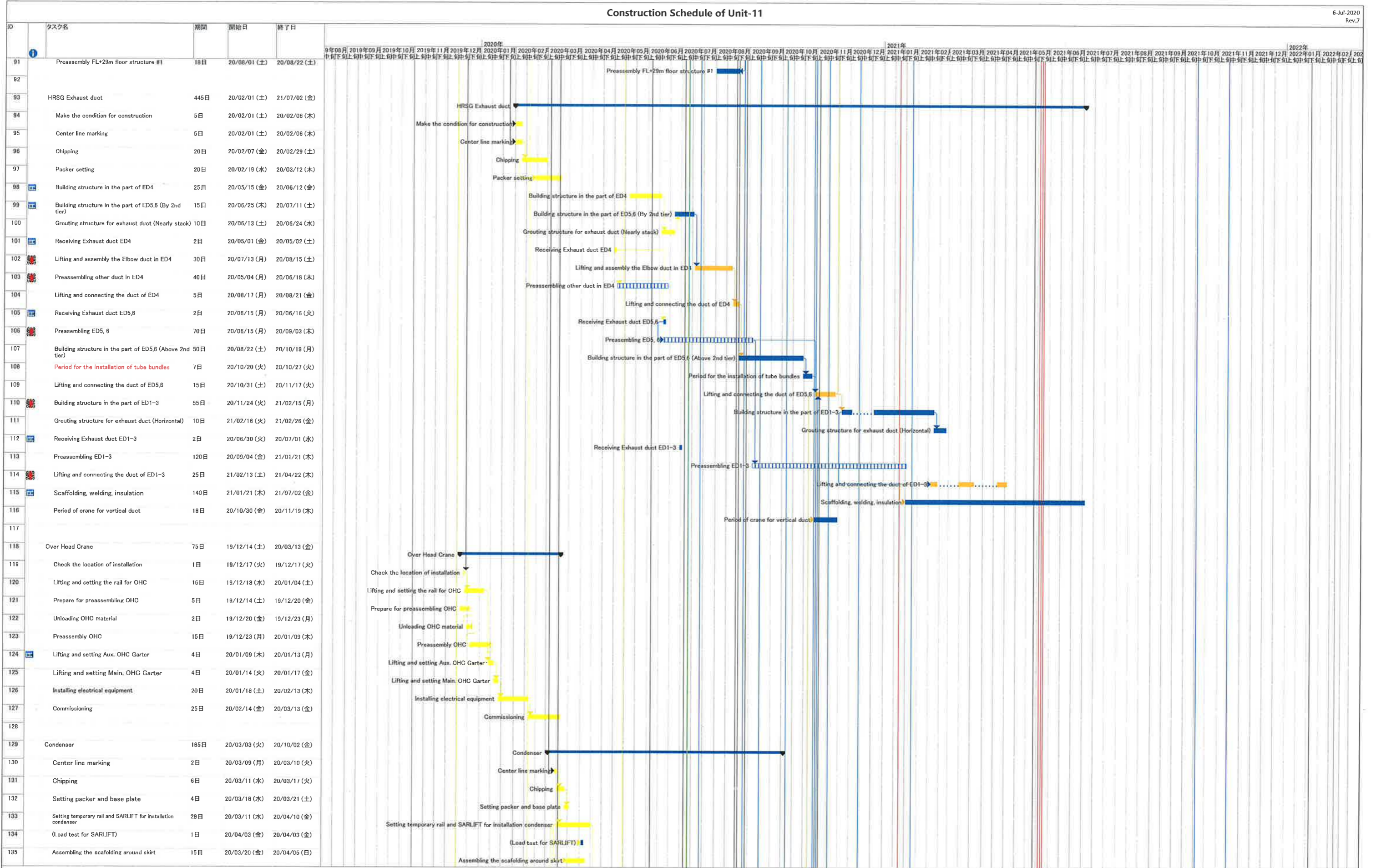


1. Change the starting date of installation below
 - ・ Installation HRSG was re-started from 23rd-Jun
 - ・ Installation Exhaust duct was re-started from 15st-May
2. To consider that structure of Takasago portion is delayed

4. To consider the delay of H/O date from PDC
5. Add the schedule of the electric work and the replacement the gantry crane for CWP

Construction Schedule of Unit-11

6-Jul-2020
Rev.7

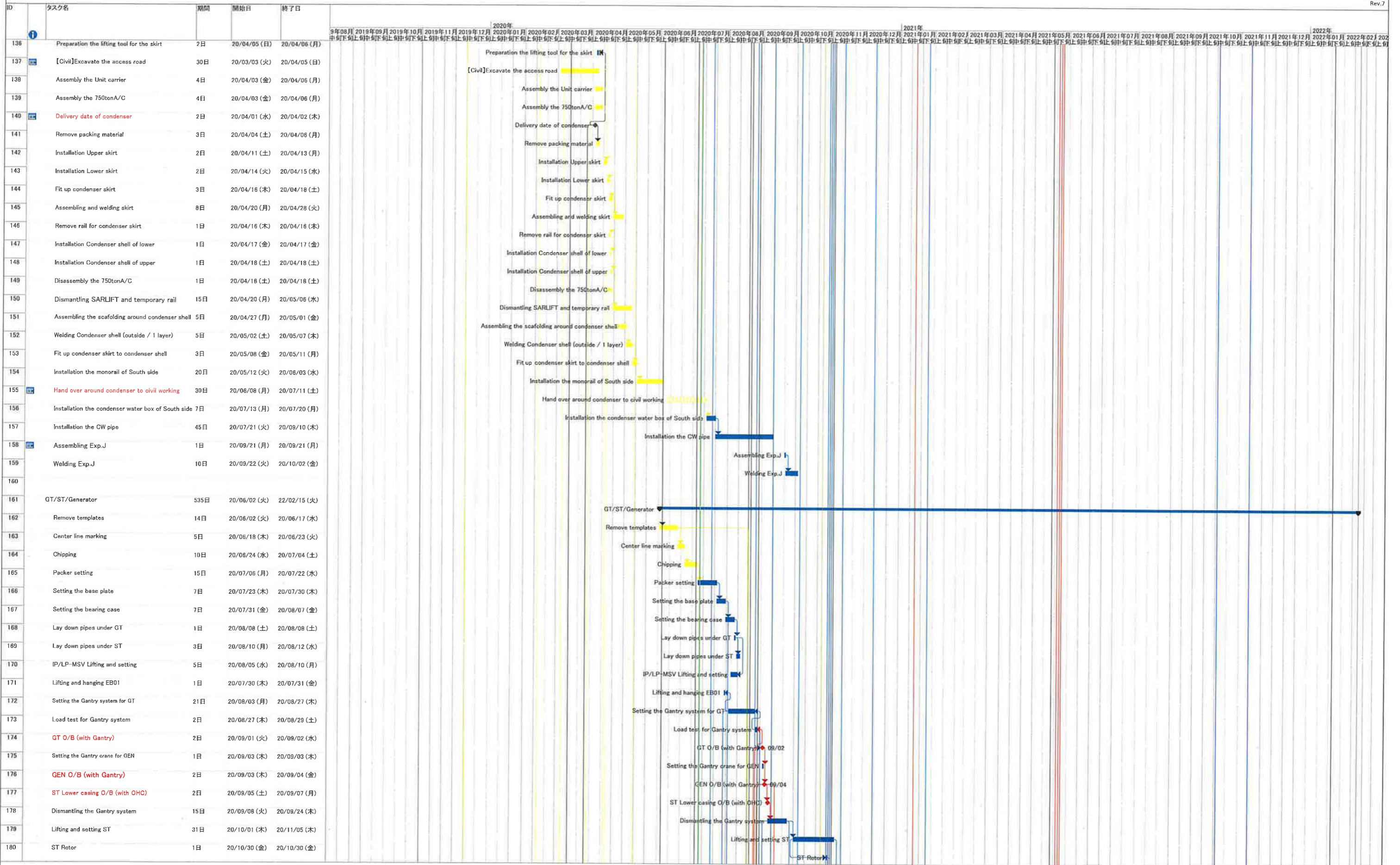


1. Change the starting date of installation below
 - ・ Installation HRSG was re-started from 23rd-Jun
 - ・ Installation Exhaust duct was re-started from 15th-May
2. To consider that structure of Takasago portion is delayed

4. To consider the delay of H/O date from PDC
5. Add the schedule of the electric work and the replacement the gantry crane for CWP

Construction Schedule of Unit-11

6-Jul-2020
Rev.7

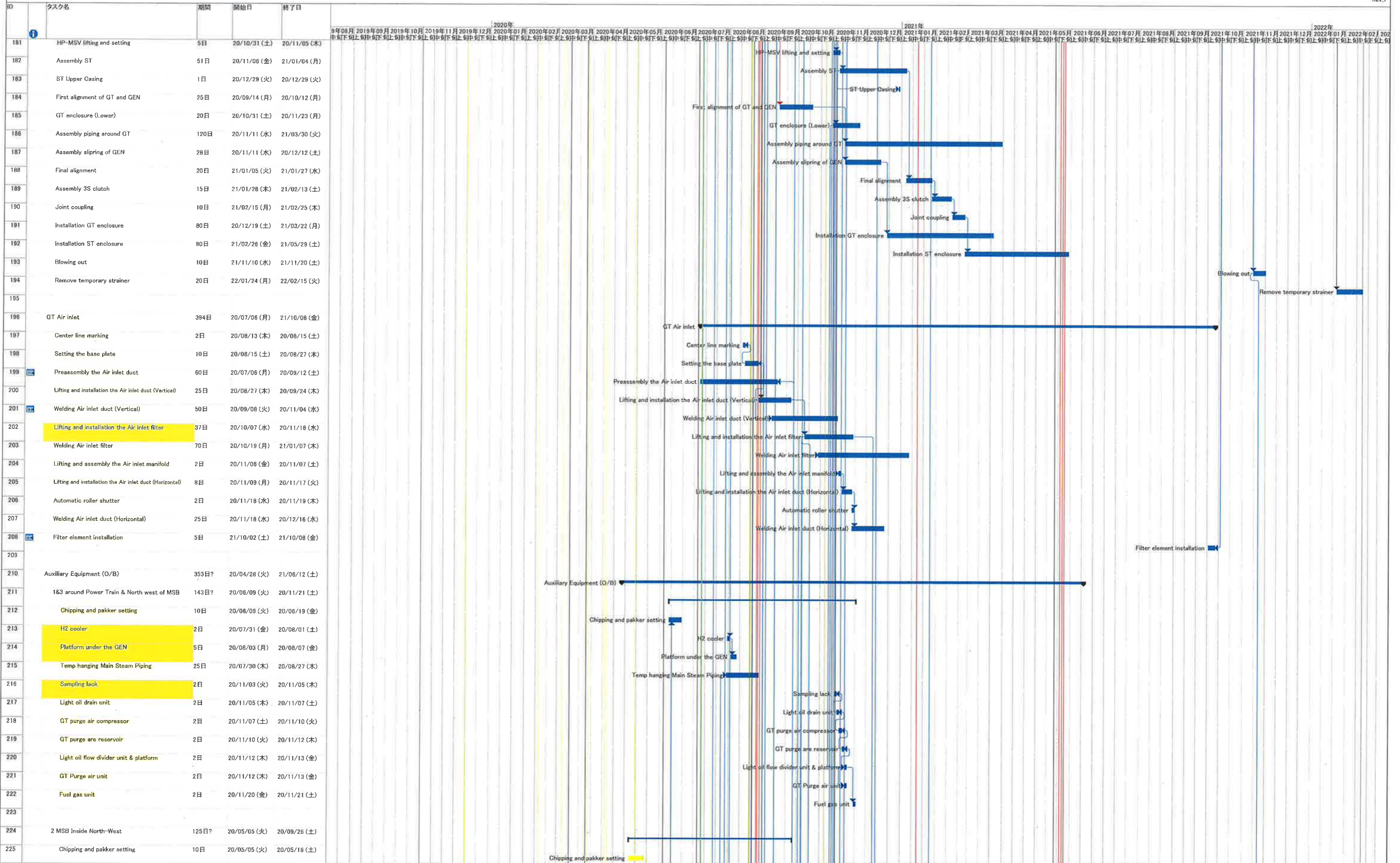


1. Change the starting date of installation below
 - ・ Installation HRSG was re-started from 23rd-Jun
 - ・ Installation Exhaust duct was re-started from 15st-May
2. To consider that structure of Takasago portion is delayed

4. To consider the delay of H/O date from PDC
5. Add the schedule of the electric work and the replacement the gantry crane for CWP

Construction Schedule of Unit-11

6-Jul-2020
Rev.7

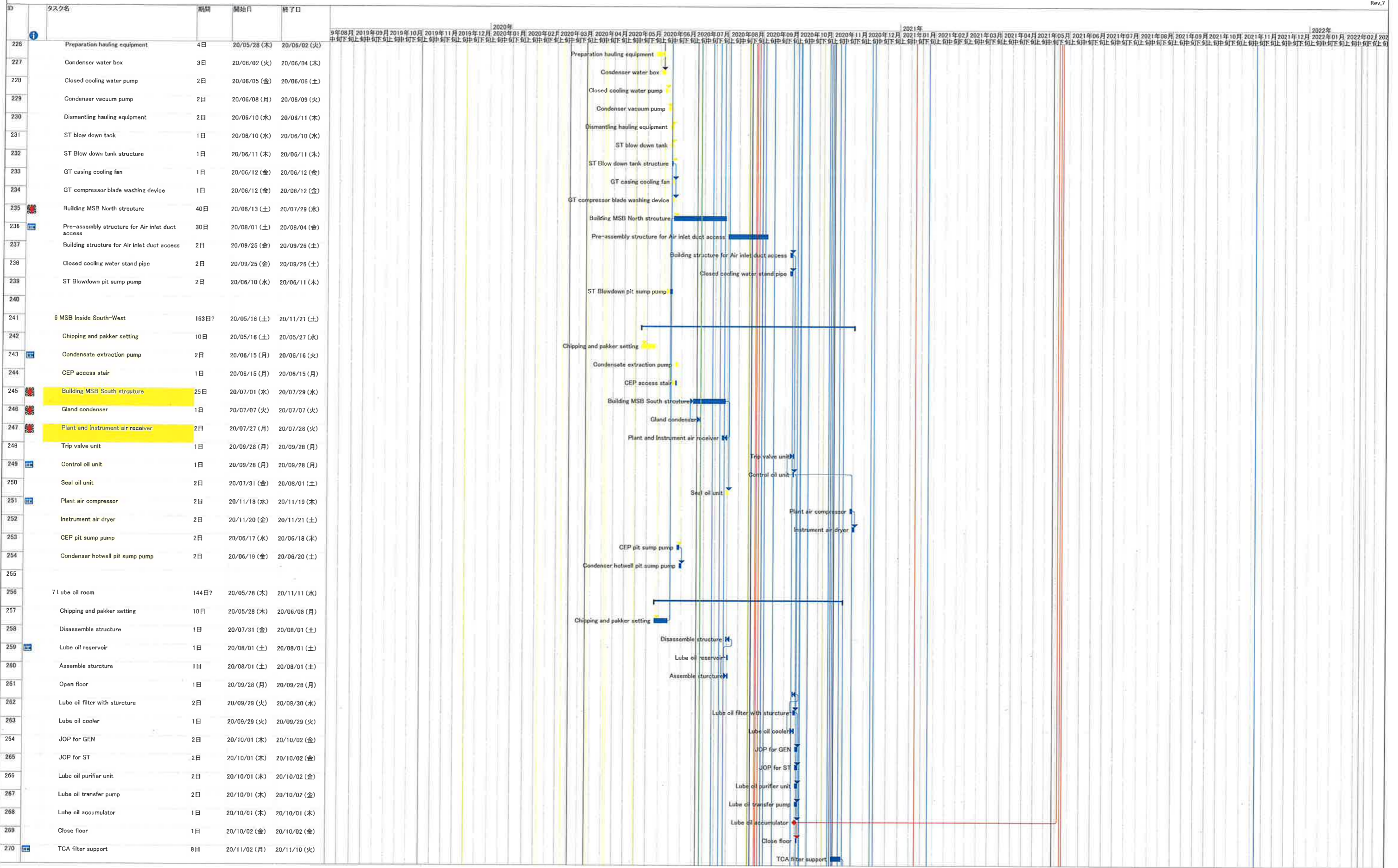


1. Change the starting date of installation below
 - ・ Installation HRSG was re-started from 23rd-Jun
 - ・ Installation Exhaust duct was re-started from 15st-May
2. To consider that structure of Takasago portion is delayed

4. To consider the delay of H/O date from PDC
5. Add the schedule of the electric work and the replacement the gantry crane for CWP

Construction Schedule of Unit-11

6-Jul-2020 Rev.7

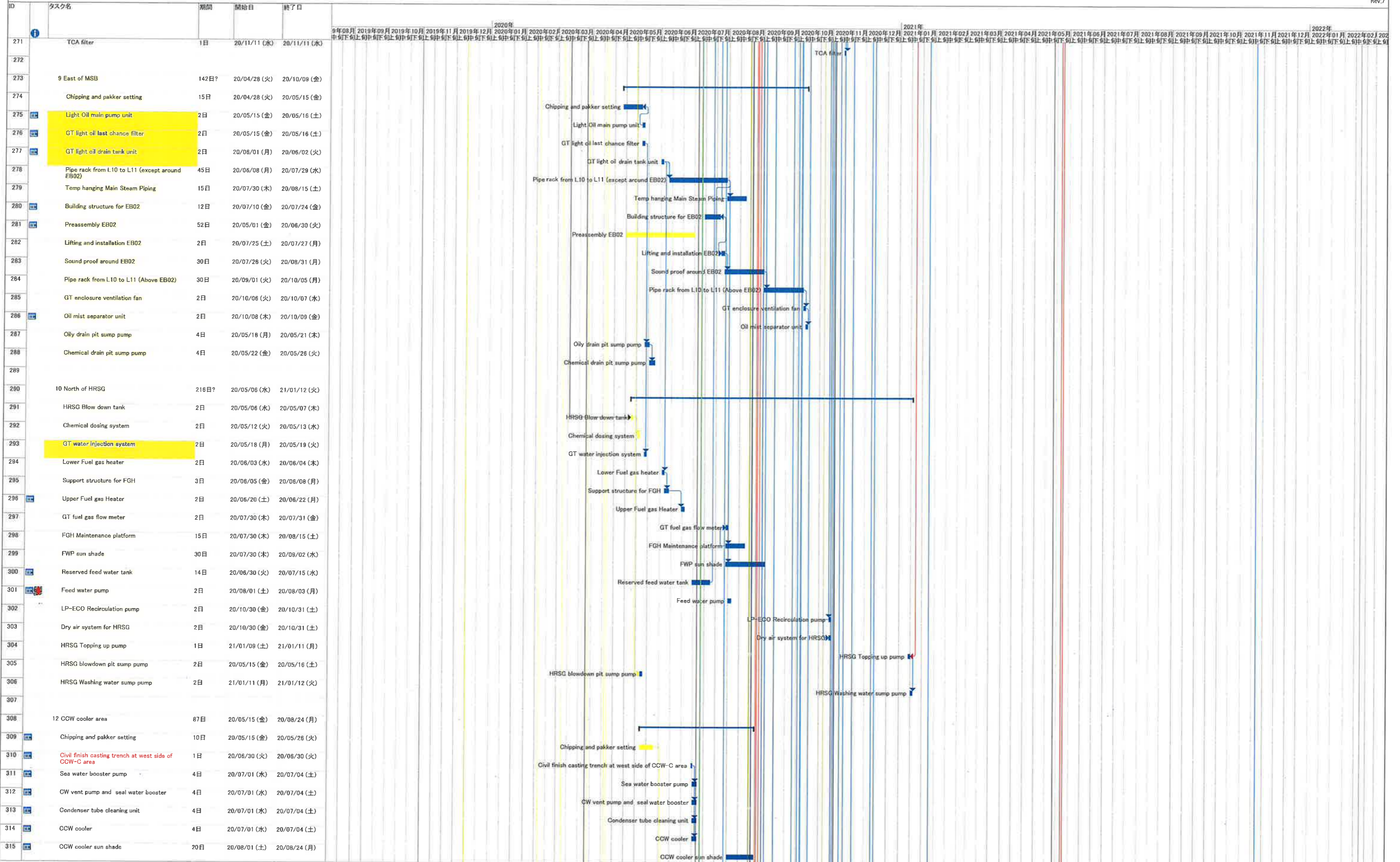


1. Change the starting date of installation below
 - ・ Installation HRSG was re-started from 23rd-Jun
 - ・ Installation Exhaust duct was re-started from 15th-May
2. To consider that structure of Takasago portion is delayed

4. To consider the delay of H/O date from PDC
5. Add the schedule of the electric work and the replacement the gantry crane for CWP

Construction Schedule of Unit-11

6-Jul-2020
Rev.7

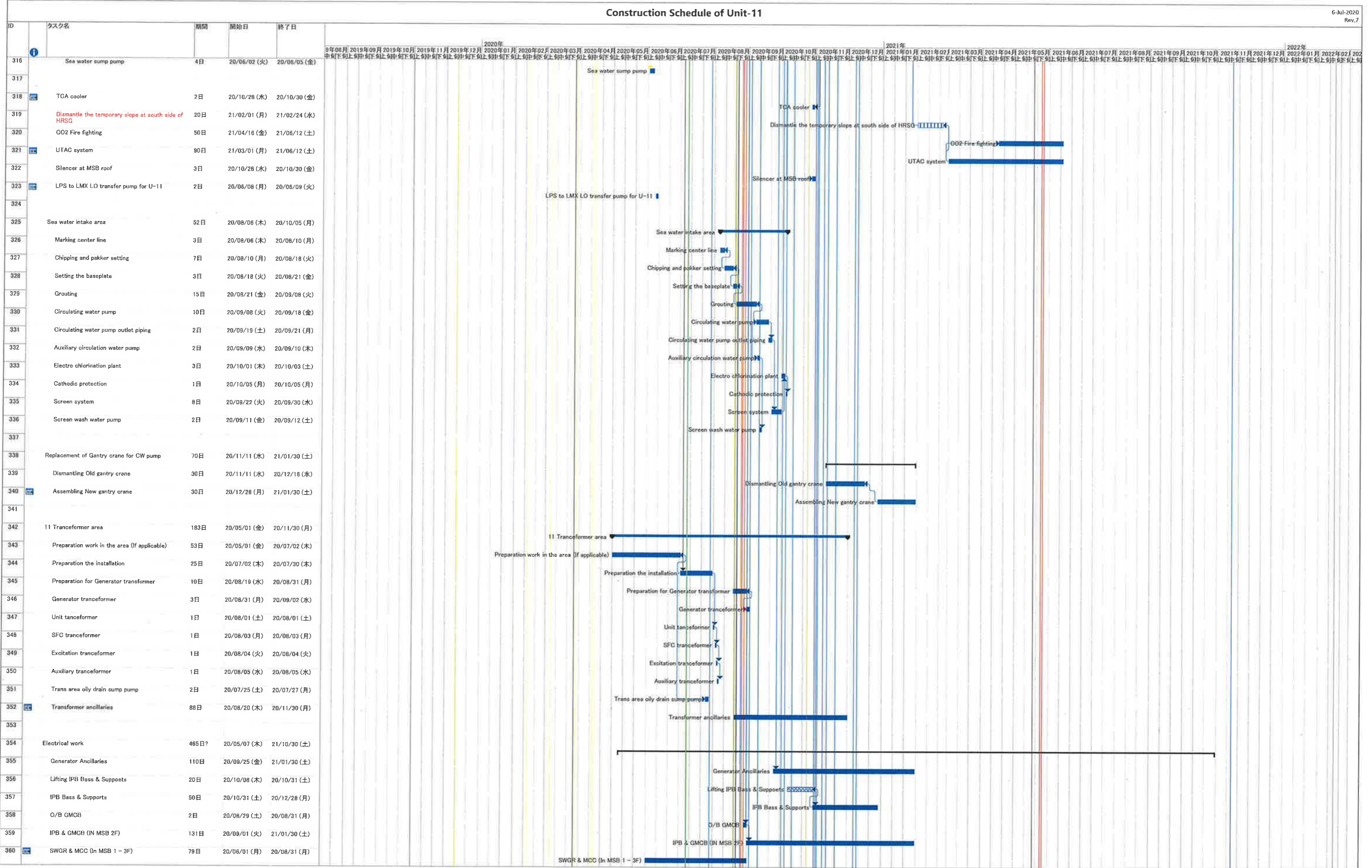


1. Change the starting date of installation below
 - Installation HRSG was re-started from 23rd-Jun
 - Installation Exhaust duct was re-started from 15st-May
2. To consider that structure of Takasago portion is delayed

4. To consider the delay of H/O date from PDC
5. Add the schedule of the electric work and the replacement the gantry crane for CWP

Construction Schedule of Unit-11

6-Jul-2020
Rev.7

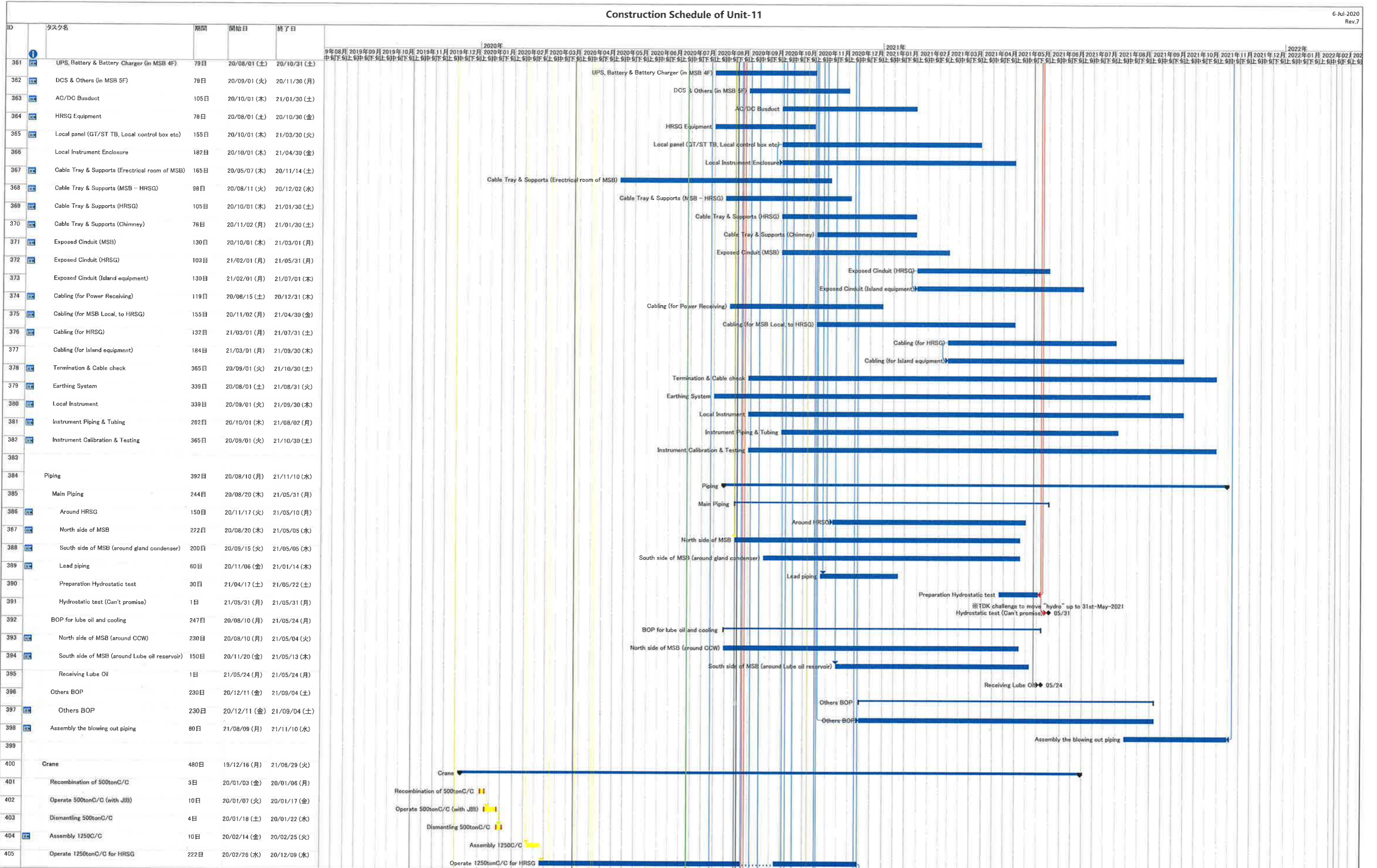


1. Change the starting date of installation below
 · Installation HRSG was re-started from 23rd-Jun
 · Installation Exhaust duct was re-started from 15st-May
 2. To consider that structure of Takasago portion is delayed

4. To consider the delay of H/O date from PDC
 5. Add the schedule of the electric work and the replacement the gantry crane for CWP

Construction Schedule of Unit-11

6-Jul-2020
Rev.7

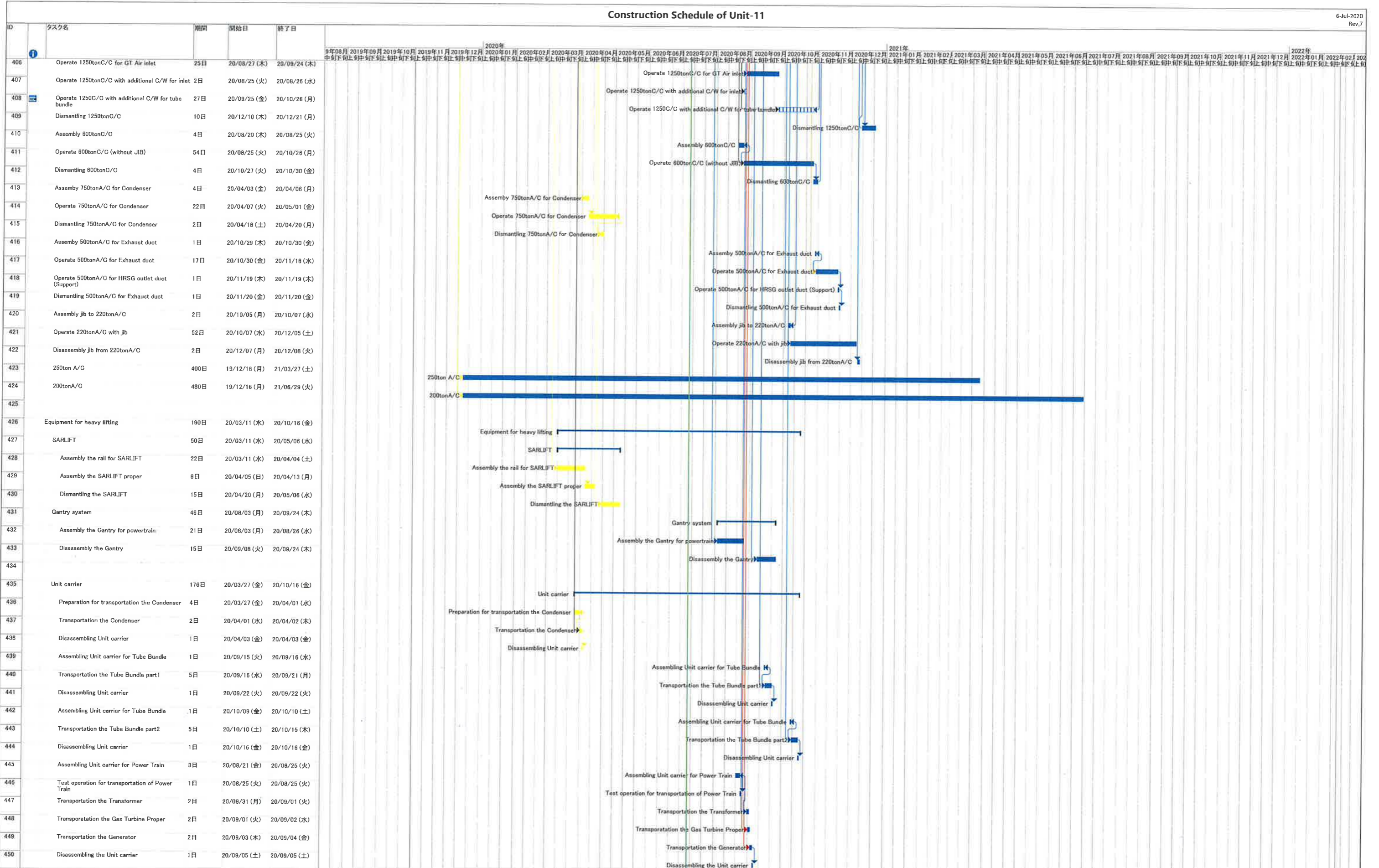


1. Change the starting date of installation below
 - ・ Installation HRSG was re-started from 23rd-Jun
 - ・ Installation Exhaust duct was re-started from 15th-May
2. To consider that structure of Takasago portion is delayed

4. To consider the delay of H/O date from PDC
5. Add the schedule of the electric work and the replacement the gantry crane for CWP

Construction Schedule of Unit-11

6-Jul-2020
Rev.7



1. Change the starting date of installation below
 - ・ Installation HRSG was re-started from 23rd-Jun
 - ・ Installation Exhaust duct was re-started from 15st-May
2. To consider that structure of Takasago portion is delayed

4. To consider the delay of H/O date from PDC
5. Add the schedule of the electric work and the replacement the gantry crane for CWP

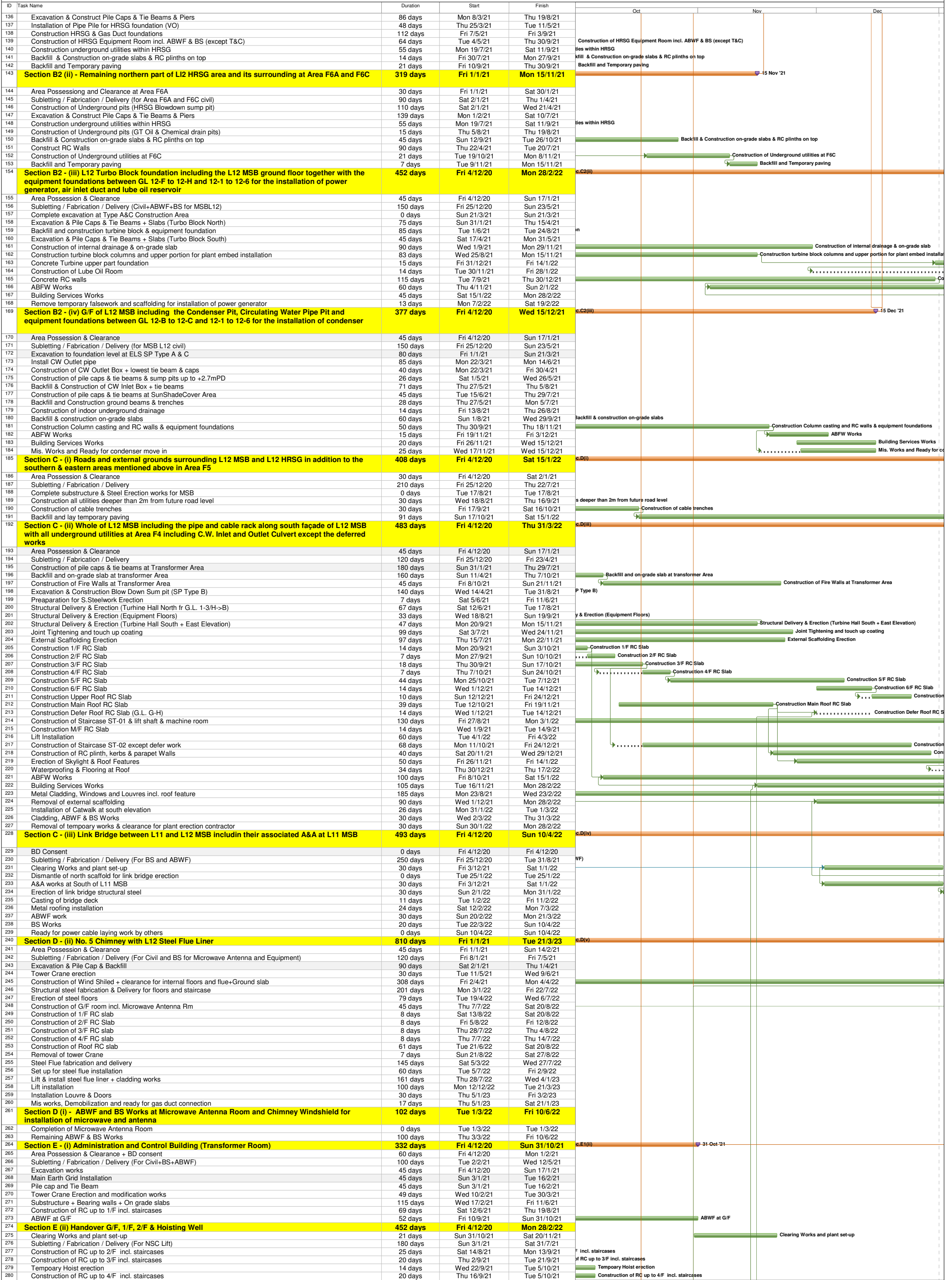
Contract No. 19/83002 Lamma Power Station Extension Civil and Building Works for Unit L12

Master Programme

ID	Task Name	Duration	Start	Finish	Oct	Nov	Dec
1	KEY DATES & MILESTONES	1123 days	Fri 4/12/20	Sun 31/12/23			
2	Contract Period	1123 days	Fri 4/12/20	Sun 31/12/23			
3	Deferred Work Completion Key Dates	784 days	Mon 8/11/21	Sun 31/12/23			
4	Substantial Completion of the Whole Contract Works (1123 Days)	0 days	Sun 31/12/23	Sun 31/12/23			
5	SITE POSSESSION DATES	513 days	Fri 4/12/20	Sun 1/5/22			
6	Site Possession Date as phased site possession plan and PS1.4.2	0 days	Fri 4/12/20	Fri 4/12/20			
7	Site Possession Date as phased site possession plan and PS1.4.2	0 days	Fri 1/1/21	Fri 1/1/21			
8	Site Possession Date as phased site possession plan and PS1.4.2	0 days	Sat 1/5/21	Sat 1/5/21			
9	Site Possession Date as phased site possession plan and PS1.4.2	0 days	Fri 1/10/21	Fri 1/10/21			
10	Site Possession Date as phased site possession plan and PS1.4.2	0 days	Fri 1/4/22	Fri 1/4/22			
11	Site Possession Date as phased site possession plan and PS1.4.2	0 days	Sun 1/5/22	Sun 1/5/22			
12	COMPLETION DATES as per PS1.4.2 Time for Completion	537 days	Thu 30/9/21	Tue 21/3/23			
13	Section A1 (i) - Area south of L12 MSB and L12 HRSRG from GL12-F eastwards leading to Chimney Road at Area F1 & F2	0 days	Thu 30/9/21	Thu 30/9/21			
14	Section A1 (ii) - Supporting structures for overhead cranes of L12 MSB including the associated roof structure except the roof deferred works	0 days	Mon 1/11/21	Mon 1/11/21			
15	Section A2 (i) External Works including CW Inlet Culvert at Area F8A	0 days	Mon 10/1/22	Mon 10/1/22			
16	Section A2 (ii) External Works including CW Inlet Culvert at Area F8B	0 days	Thu 31/3/22	Thu 31/3/22			
17	Section A2 (iii) External Works including CW Inlet Culvert at Area F8C	0 days	Fri 11/3/22	Fri 11/3/22			
18	Section B1 - Area south of L12 MSB from GL12-F westwards leading to Station Road at Area F3	0 days	Wed 15/12/21	Wed 15/12/21			
19	Section B2 (i) - Southern Part of L12 HRSRG areas and its surrounding refer to Area F6B as shown in drawing no 553/03/2040 including the foundations for Gas Exhaust Duct	0 days	Thu 30/9/21	Thu 30/9/21			
20	Section B2 (ii) - Remaining northern part of L12 HRSRG area and its surrounding at Area F6A and F6C	0 days	Mon 15/11/21	Mon 15/11/21			
21	Section B2 - (iii) L12 Turbo Block foundation including the L12 MSB ground floor together with the equipment foundations between GL 12-F to 12-H and 12-1 to 12-6 for the installation of power generator, air inlet duct and lube oil reservoir	0 days	Mon 28/2/22	Mon 28/2/22			
22	Section B2 - (iv) G/F of L12 MSB including the Condenser Pit, Circulating Water Pipe Pit and equipment foundations between GL 12-B to 12-C and 12-1 to 12-6 for the installation of condenser	0 days	Wed 15/12/21	Wed 15/12/21			
23	Section C - (i) Roads and external grounds surrounding L12 MSB and L12 HRSRG in addition to the southern & eastern areas mentioned above in Area F5	0 days	Sat 15/1/22	Sat 15/1/22			
24	Section C - (ii) Whole of L12 MSB including the pipe and cable rack along south façade of L12 MSB with all underground utilities at Area F4 including C.W. Inlet and Outlet Culvert except the deferred works	0 days	Thu 31/3/22	Thu 31/3/22			
25	Section C - (iii) Link Bridge between L11 and L12 MSB including their associated A&A at L11 MSB	0 days	Sun 10/4/22	Sun 10/4/22			
26	Section D - (i) Microwave Antenna Room and Chimney Windshiled for the installation of microwave equipment and antenna	0 days	Fri 10/6/22	Fri 10/6/22			
27	Section D (ii) - No. 5 Chimney with L12 Steel Flue liner	0 days	Tue 21/3/23	Tue 21/3/23			
28	Section E (i) Tx Room of Administration and Control Building	0 days	Sun 31/10/21	Sun 31/10/21			
29	Section E (ii) - G/F, 1/F, 2/F & Hoisting Well of Admin. & Control Building	0 days	Mon 28/2/22	Mon 28/2/22			
30	Section E (iii) - Whole of Admin. And Control Building	0 days	Tue 31/5/22	Tue 31/5/22			
31	Section F (i) - Gas Receiving Station and L12 Gas Receiving Station Equipment Room (GRS) Area Extension at Area F14	0 days	Wed 30/11/22	Wed 30/11/22			
32	Section F (ii) - Pipe and Cable rack and external work at Area F9A and F9B	0 days	Tue 31/5/22	Tue 31/5/22			
33	Section F (iii) - No. 5 CW Equipment Room, pipe and cable rack, external works at Area F10	0 days	Wed 31/8/22	Wed 31/8/22			
34	Section G (i) - External Work surrounding Area F11	0 days	Wed 26/10/22	Wed 26/10/22			
35	Section G (ii) - External Works at Area F12 & F13	0 days	Fri 30/9/22	Fri 30/9/22			
36	Section G (iii) - FS Modification works along South Seafrost Road at Area F15	0 days	Fri 30/9/22	Fri 30/9/22			
37	Section G (iv) - 275kV cable trenches and External Works at Area F16	0 days	Fri 30/9/22	Fri 30/9/22			
38	Section G (v) - Shunt Reactor Compound and External Works at Area F17	0 days	Fri 30/9/22	Fri 30/9/22			
39	Section G (vi) - 275kV cable trenches and External Works at Area F18	0 days	Wed 1/6/22	Wed 1/6/22			
40	Section G (vii) - Flood Wall at No. 4 CW Intake Area along HUA at Area F20A	0 days	Sun 8/5/22	Sun 8/5/22			
41	Section G (viii) - Flood wall at No. 5 CW Intake Area along HUA at Area F20B	0 days	Fri 30/9/22	Fri 30/9/22			
42	Section G (ix) - Bund wall modification works at South Seafrost Road at Area F21	0 days	Fri 15/10/21	Fri 15/10/21			
43	Section G (x) - DAX Cable Diversion Works (from Part I to Part IV)	0 days	Sat 31/12/22	Sat 31/12/22			
44	Section H - All remaining works shall be completed for reporting completion to BD and ready for OP inspection	0 days	Tue 28/2/23	Tue 28/2/23			
45	GENERAL & PRELIMINARY	228 days	Fri 4/12/20	Mon 19/7/21			
46	First Mobilization	18 days	Fri 4/12/20	Mon 21/12/20			
47	Set up Temporary Site Office and Welfare Facilities	90 days	Tue 22/12/20	Sun 21/3/21			
48	Permit Applications & Statuary Submissions	120 days	Mon 22/3/21	Mon 19/7/21			
49	Existing Utilities scanning & Excavation Permit	45 days	Tue 22/12/20	Thu 4/2/21			
50	Tower Crane erections	60 days	Sun 27/12/20	Wed 24/2/21			
51	TECHNICAL SUBMISSION AND APPROVAL	314 days	Thu 10/12/20	Wed 20/10/21			
52	BD Approval & Consent (If required)	0 days	Thu 10/12/20	Thu 10/12/20			
53	Submission and Approval of Master Programme	14 days	Fri 11/12/20	Thu 24/12/20			
54	Work Execution Overall Plan submission & approval	14 days	Fri 11/12/20	Thu 24/12/20			
55	Material Submissions and approval	300 days	Fri 25/12/20	Wed 20/10/21			
56	Method Statement submission and approval	300 days	Fri 25/12/20	Wed 20/10/21			
57	BIM Model, CSD & CBWD Submission & approval	120 days	Fri 25/12/20	Fri 23/4/21			
58	Structure Steelwork Connection Design Submission & BD approval	45 days	Tue 29/12/20	Thu 11/2/21			
59	Structure Steelwork Shop Drawing & Approval	30 days	Fri 12/2/21	Sat 13/3/21			
60	Metal Cladding, louvre & windows submission & BD approval	45 days	Tue 29/12/20	Thu 11/2/21			
61	Metal Cladding, louvre & windows shop drawing submission	45 days	Fri 12/2/21	Sun 28/3/21			
62	Order, Off Site Fabrication and Delivery (S. Steel & Cladding & Louvres)	120 days	Mon 29/3/21	Mon 26/7/21			
63	ELS Submission and BD approval	90 days	Fri 11/12/20	Wed 10/3/21			
64	No. 5 Chimney windshield temporary work submission, approval & fabrication	60 days	Fri 11/12/20	Mon 8/2/21			
65	Steel Flue Assessment Report and Design Drawings submission & approval	60 days	Tue 9/2/21	Fri 9/4/21			
66	Folding Shutters Shop Drawing Submission & Approval	30 days	Thu 11/2/21	Fri 12/3/21			
67	Fabrication & Delivery of Folding Shutters	180 days	Sat 13/3/21	Wed 8/9/21			
68	Sewage Pump System Design submission & approval	45 days	Tue 23/2/21	Thu 8/4/21			
69	Fabrication & Delivery of Sewage Pump	180 days	Fri 9/4/21	Tue 5/10/21			
70	Other material submission & approval & delivery	180 days	Sat 24/4/21	Wed 20/10/21			
71	Other material submission & approval & delivery	180 days	Sat 24/4/21	Wed 20/10/21			
72	CONSTRUCTION	1123 days	Fri 4/12/20	Sun 31/12/23			
73	Coordination with the Employer's Specialist Contractors	562 days	Fri 15/1/21	Sat 30/7/22			
74	Installation of Puddle Pipes at C.W. outlet Culvert	7 days	Mon 22/3/21	Sun 28/3/21			
75	Installation of Puddle Pipes at C.W. Inlet Culvert	7 days	Thu 27/5/21	Wed 2/6/21			
76	Template setting at L12 Turbo Block Foundation	45 days	Tue 16/11/21	Thu 30/12/21			
77	Template setting of holding down bolts at HRSRG column base	45 days	Fri 15/1/21	Sun 28/2/21			
78	I-beam / channel base installation on top of transformer foundations at Transformer Area	45 days	Tue 1/6/21	Thu 15/7/21			
79	Overhead crane erection at turbine hall using access through a temporary opening at L12 MSB roof between GL12-G to 12-H and 12-2 to 12-6	38 days	Mon 1/11/21	Wed 8/12/21			
80	Condenser assembly and erection using access through a temporary façade opening at L12 MSB below 1/F along GL 12-6 from GL12-B to 12-C including a clear space below 1/F between GL 12-B to 12-C	122 days	Thu 16/12/21	Sat 16/4/22			
81	Installation of power train equipment including air inlet duct using access through a temporary façade opening at L12 MSB below 1/F along GL 12-6 from GL12-F to 12-H including a clear space below 1/F of the above area	121 days	Fri 1/4/22	Sat 30/7/22			
82	Installation of embedded materials such as holding down bolts for equipment foundations - Commencement	0 days	Thu 15/4/21	Thu 15/4/21			
83	Section A1 (i) - Area south of L12 MSB and L12 HRSRG from GL12-F eastwards leading to Chimney Road at Area F1 & F2	301 days	Fri 4/12/20	Thu 30/9/21			
84	Area Possession & Clearance	30 days	Fri 4/12/20	Sat 2/1/21			
85	Subletting / Fabrication / Delivery (both for Area F1 and Area F2)	60 days	Sun 17/1/21	Wed 17/3/21			
86	Excavation for CW Inlet Culvert (Type D Construction Area)	14 days	Tue 1/6/21	Mon 14/6/21			
87	Installation CW Inlet Culvert pipe	70 days	Tue 15/6/21	Mon 23/8/21			
88	Backfill	7 days	Tue 24/8/21	Mon 30/8/21			
89	Construction UG Utilities 2m deep below further surface	21 days	Tue 31/8/21	Mon 27/9/21			
90	Temporary Paving and handover for plant erection	3 days	Tue 28/9/21	Thu 30/9/21			
91	Section A1 (ii) - Supporting structures for overhead cranes of L12 MSB including the associated roof structure except the roof deferred works	333 days	Fri 4/12/20	Mon 1/11/21			
92	Area Possession & Clearance	45 days	Fri 4/12/20	Sun 17/1/21			
93	Subletting / Fabrication / Delivery	210 days	Tue 23/2/21	Mon 20/9/21			
94	Complete structural steel erection	0 days	Tue 19/10/21	Tue 19/10/21			
95	Install Crane Girders	11 days	Tue 12/10/21	Fri 29/10/21			
96	Construction of roof slab (except defer work)	14 days	Tue 12/10/21	Mon 1/11/21			
97	Touch up and handover for install overhead cranes	3 days	Sat 30/10/21	Mon 1/11/21			
98	Section A2 (i) External Works including CW Inlet Culvert at Area F8A	403 days	Fri 4/12/20	Mon 10/1/22			
99	BD consent for Sheetpile installation	30 days	Fri 4/12/20	Sat 2/1/21			
100	Subletting / Fabrication / Delivery (both for Area F8A-F8B)	30 days	Fri 18/12/20	Sat 16/1/21			
101	Area Possession & Clearance	14 days	Sat 2/1/21	Fri 15/1/21			
102	Install Sheet pile	55 days	Sat 16/1/21	Thu 11/3/21			
103	Installation of Additional sheet Pile at South of area F8A	7 days	Sat 17/4/21	Fri 23/4/21			
104	BD Consent for ELS	28 days	Sat 24/4/21	Fri 21/5/21			
105	ELS and install CW Inlet Pipe (NW to N direction) (Assume flexible joint deliver in Sep 2021)	100 days	Fri 16/7/21	Sat 23/10/21			
106	Construction of Thrust Box & Manholes,etc	15 days	Thu 16/9/21	Thu 30/9/21			
107	Backfill, UG Utilities and Road Paving	79 days	Sun 24/10/21	Mon 10/1/22			
108	Section A2 (ii) External Works including CW Inlet Culvert at Area F8B	483 days	Fri 4/12/20	Thu 31/3/22			
109	Area Possession & Clearance	30 days	Mon 1/3/21	Tue 30/3/21			
110	BD consent for Sheetpile installation	30 days	Fri 4/12/20	Sat 2/1/21			
111	Install Sheet pile	90 days	Fri 2/4/21	Wed 30/6/21			
112	BD Consent for ELS	28 days	Thu 1/7/21	Wed 28/7/21			
113	ELS and install CW Inlet Pipe	100 days	Thu 29/7/21	Fri 5/11/21			
114	Construction of Thrust Box & Manholes,etc	15 days	Wed 1/9/21	Wed 15/9/21			
115	Backfill, UG Utilities and Road Paving	146 days	Sat 6/11/21	Thu 31/3/22			
116	Section A2 (iii) External Works including CW Inlet Culvert at Area F8C	365 days	Fri 12/3/21	Fri 11/3/22			
117	Area Possession & Clearance	30 days	Fri 12/3/21	Sat 10/4/21			
118	Subletting / Fabrication / Delivery (for Area F8C)	60 days	Fri 12/3/21	Mon 10/5/21			
119	BD consent for Sheetpile installation	30 days	Tue 13/4/21	Wed 12/5/21			
120	Install Sheet pile	62 days	Thu 13/5/21	Tue 13/7/21			
121	BD Consent for ELS	35 days	Wed 14/7/21	Tue 17/8/21			
122	ELS and install CW Inlet Pipe (including soil nail installation under 19/83014)	76 days	Wed 18/8/21	Thu 20/1/22			
123	Construction of Thrust Box & Manholes,etc	30 days	Fri 21/1/22	Sat 19/2/22			
124	Backfill, UG Utilities and Road Paving	20 days	Sun 20/2/22	Fri 11/3/22			
125	Section B1 - Area south of L12 MSB from GL12-F westwards leading to Station Road at Area F3	377 days	Fri 4/12/20	Wed 15/12/21			
126	Area Possession & Clearance	30 days	Fri 4/12/20	Sat 2/1/21			
127	Subletting / Fabrication / Delivery	120 days	Fri 25/12/20	Fri 23/4/21			
128	Complete CW Pipe Installation & Thrust box	45 days	Tue 25/5/21	Thu 8/7/21			
129	Backfill	30 days	Fri 9/7/21	Sat 7/8/21			
130	Construction of Storm Drain & Manholes	67 days	Mon 20/9/21	Thu 25/11/21			
131	Temp Paving and handover for Condenser Move in	20 days	Fri 26/11/21	Wed 15/12/21			

Contract No. 19/83002 Lamma Power Station Extension Civil and Building Works for Unit L12

Master Programme



Contract No. 19/83002 Lamma Power Station Extension Civil and Building Works for Unit L12

Master Programme

ID	Task Name	Duration	Start	Finish	
281	Construction of RC up to R/F incl. staircases	25 days	Thu 30/9/21	Sun 24/10/21	
282	Construction of RC up to lift machine room	21 days	Mon 25/10/21	Sun 14/11/21	
283	Construction of RC up to UR/F	21 days	Mon 15/11/21	Sun 5/12/21	
284	External Wall Finish, Cladding + Windows and Louvres + Features	138 days	Thu 30/9/21	Mon 14/2/22	
285	ABWF at 1/F	95 days	Fri 8/10/21	Mon 10/1/22	
286	ABWF at 2/F	96 days	Fri 15/10/21	Tue 18/1/22	
287	Building Services Works at G/F, 1/F, 2/F & Hoisting Well	147 days	Tue 5/10/21	Mon 28/2/22	
288	Section E (iii) Whole of Administration and Control Building	544 days	Fri 4/12/20	Tue 31/5/22	
289	Subletting / Fabrication / Delivery (For BS-ABWF)	127 days	Sat 23/10/21	Sun 20/3/22	
290	Construction of New UG Grey Water Tank	60 days	Mon 20/3/23	Thu 18/5/23	
291	Submission of WW046 for commencement	60 days	Wed 19/1/22	Sat 19/3/22	
292	ABWF at 3/F	120 days	Mon 25/10/21	Mon 21/2/22	
293	ABWF at 4/F	90 days	Wed 24/11/21	Mon 21/2/22	
294	ABWF at R/F	60 days	Wed 15/12/21	Sat 12/2/22	
295	ABWF at UR/F + Lift Machine Room	45 days	Wed 5/1/22	Fri 18/2/22	
296	Bridge Erection & Connection	28 days	Mon 7/2/22	Mon 28/3/22	
297	Installation of Raised floors	60 days	Fri 7/1/22	Fri 29/4/22	
298	Removal of external scaffolding	39 days	Mon 24/1/22	Wed 9/3/22	
299	Waterproofing & screeding	60 days	Mon 6/12/21	Thu 3/2/22	
300	Removal of Tower Crane	7 days	Thu 10/3/22	Wed 16/3/22	
301	External utilities and road work	45 days	Tue 8/2/22	Thu 14/4/22	
302	Building Services Works	160 days	Tue 7/12/21	Sun 15/5/22	
303	False ceiling after BS works	54 days	Tue 29/3/22	Sat 21/5/22	
304	Submission of WW046 for completion	30 days	Wed 9/3/22	Thu 7/4/22	
305	Submission of FS inspection	14 days	Fri 13/5/22	Thu 26/5/22	
306	Submission for OP Inspection	14 days	Wed 18/5/22	Tue 31/5/22	
307	Section F (i) - Gas Receiving Station and L12 Gas Receiving Station Equipment Room (GRS) Area Extension at Area F14	548 days	Tue 1/6/21	Wed 30/11/22	
308	Area Possession & Clearance + BD consent	90 days	Tue 1/6/21	Sun 29/8/21	
309	Subletting / Fabrication / Delivery	30 days	Tue 22/6/21	Wed 21/7/21	
310	Installation of pipe pile at north of GRS (VO)	134 days	Mon 5/7/21	Mon 15/11/21	
311	Construction Equipment room extension	145 days	Sun 31/10/21	Thu 24/3/22	
312	Modification of existing drainage	45 days	Fri 25/3/22	Sun 8/5/22	
313	Excavation & earthing for Skid foundations	21 days	Mon 9/5/22	Sun 29/5/22	
314	Construction of Skid foundation	45 days	Mon 30/5/22	Wed 13/7/22	
315	Construct underground utilities and drainage	45 days	Thu 14/7/22	Sat 27/8/22	
316	Backfill and road works	60 days	Sun 28/8/22	Wed 26/10/22	
317	Relocate / install new fencing for completion	21 days	Thu 27/10/22	Wed 16/11/22	
318	Mis. Work and ready for OP inspection	14 days	Thu 17/11/22	Wed 30/11/22	
319	Section F (ii) - Pipe and Cable rack and external work at Area F9A and F9B	515 days	Sat 2/1/21	Tue 31/5/22	
320	BD consent + Site Possession at Area F9A & F9B	90 days	Sat 2/1/21	Thu 1/4/21	
321	Excavation & Plate load test	30 days	Mon 1/11/21	Tue 30/11/21	
322	Construction new footing for pipe rack	30 days	Wed 1/12/21	Thu 30/12/21	
323	Underground utilities and road works for completion	11 days	Thu 31/3/22	Tue 31/5/22	
324	Structural Steel fabrication & Delivery	90 days	Sat 2/10/21	Thu 30/12/21	
325	Erection of new pipe rack	70 days	Fri 31/12/21	Thu 10/3/22	
326	Mis. Work and ready for OP inspection	21 days	Wed 11/5/22	Tue 31/5/22	
327	Section F (iii) - No. 5 CW Equipment Room, pipe and cable rack, external works at Area F10	457 days	Tue 1/6/21	Wed 31/8/22	
328	Area Possession & Clearance + BD consent	90 days	Tue 1/6/21	Sun 29/8/21	
329	Subletting / Fabrication / Delivery For ABWF + BS	150 days	Wed 2/6/21	Fri 29/10/21	
330	Installation of Sheet Pile (VO)	85 days	Tue 1/6/21	Tue 24/8/21	
331	Consent for ELS Works	28 days	Wed 25/8/21	Tue 21/9/21	
332	Excavation & Plate load test	30 days	Wed 22/9/21	Thu 21/10/21	
333	Construction new footing for equipment room	68 days	Thu 23/12/21	Mon 28/2/22	
334	Superstructure for equipment room	60 days	Tue 1/3/22	Fri 29/4/22	
335	ABWF Works	45 days	Sat 30/4/22	Mon 13/6/22	
336	BS Works	30 days	Wed 1/6/22	Thu 30/6/22	
337	Construction RC Wall & plinths & drainage at Chlorinator area	45 days	Wed 30/3/22	Fri 13/5/22	
338	External wall finish & remove scaffolding	30 days	Sat 14/5/22	Sun 12/6/22	
339	Excavation & Plate load test for pipe rack extension (For F45-47 & F49)	30 days	Sat 16/10/21	Sun 14/11/21	
340	Construction new footing for pipe rack (For F45-47 & F49)	45 days	Mon 15/11/21	Wed 29/12/21	
341	Underground utilities and road works for completion	60 days	Thu 30/12/21	Sun 27/2/22	
342	Structural Steel fabrication & Delivery	90 days	Sun 12/12/21	Fri 11/3/22	
343	Backfilling and prepare for steel erection	12 days	Mon 28/2/22	Fri 11/3/22	
344	Excavation & Plate Load test for pipe rack extension (For F48 & F56)	14 days	Wed 30/3/22	Tue 12/4/22	
345	Construction of new footing for pipe rak (For F48 & F56)	14 days	Wed 13/4/22	Tue 26/4/22	
346	Erection of new pipe rack (For F48 & F56)	65 days	Tue 3/5/22	Wed 6/7/22	
347	Erection of new pipe rack (For F45-47 & F49)	70 days	Sat 12/3/22	Fri 20/5/22	
348	Mis. Work and ready for OP inspection	56 days	Thu 7/7/22	Wed 31/8/22	
349	Section G (i) - External Work surrounding Area F11	145 days	Sat 4/6/22	Wed 26/10/22	
350	Area Possession & Clearance after handover from No. 5 Intake Contractor	30 days	Sat 4/6/22	Sun 3/7/22	
351	Subletting / Fabrication / Delivery	30 days	Sat 4/6/22	Sun 3/7/22	
352	Submission WW0046 for commencement	30 days	Sat 4/6/22	Sun 3/7/22	
353	Construct Underground utilities and drainage	30 days	Mon 20/6/22	Tue 19/7/22	
354	Install new FS Hydrant	20 days	Mon 20/6/22	Sat 9/7/22	
355	Submission WW0046 for completion	30 days	Sat 30/7/22	Sun 28/8/22	
356	Construction Road extension	58 days	Sat 30/7/22	Sun 25/9/22	
357	Construction road paving and install fencing	30 days	Mon 26/9/22	Tue 25/10/22	
358	Ready for OP inspection	14 days	Thu 13/10/22	Wed 26/10/22	
359	Section G (ii) - External Works at Area F12 & F13	666 days	Fri 4/12/20	Fri 30/9/22	
360	Area Possession & Clearance after handover from other	45 days	Fri 4/12/20	Sun 17/1/21	
361	Subletting / Fabrication / Delivery	180 days	Thu 4/3/21	Mon 30/8/21	
362	Excavation	21 days	Sat 23/10/21	Fri 12/11/21	
363	Submission WW0046 for commencement	30 days	Sat 13/11/21	Sun 12/12/21	
364	Construct Underground utilities and drainage	90 days	Mon 13/12/21	Sat 12/3/22	
365	Install new FS Hydrant	30 days	Sun 13/3/22	Mon 11/4/22	
366	Submission WW0046 for completion	30 days	Tue 12/4/22	Wed 11/5/22	
367	Construction Road extension	127 days	Thu 12/5/22	Thu 15/9/22	
368	Complete with Mis. Works for completion	15 days	Fri 16/9/22	Fri 30/9/22	
369	Section G (iii) - FS Modification works along South Seafront Road at Area F15	183 days	Fri 1/4/22	Fri 30/9/22	
370	Area Possession & Clearance after handover from other	45 days	Fri 1/4/22	Sun 15/5/22	
371	Subletting / Fabrication / Delivery	21 days	Fri 1/4/22	Thu 21/4/22	
372	Temporary Traffic Arrangement approval	14 days	Fri 1/4/22	Thu 14/4/22	
373	Utilities scanning and expose existing FS	14 days	Fri 15/4/22	Thu 28/4/22	
374	Determine new FS alignment	21 days	Fri 29/4/22	Thu 19/5/22	
375	Submission to FSD	14 days	Fri 20/5/22	Thu 2/6/22	
376	Modification of FS	60 days	Fri 3/6/22	Mon 1/8/22	
377	Backfill and reinstatement + report to FSD	60 days	Tue 2/8/22	Fri 30/9/22	
378	Section G (iv) - 275kV cable trenches and External Works at Area F16	518 days	Sat 1/5/21	Fri 30/9/22	
379	Area Possession & Clearance	60 days	Sat 1/5/21	Tue 29/6/21	
380	Subletting / Fabrication / Delivery	210 days	Wed 17/11/21	Tue 14/6/22	
381	Temporary Traffic Arrangement approval	60 days	Sat 1/5/21	Tue 29/6/21	
382	Removal of aboveground services	60 days	Wed 30/6/21	Sat 28/8/21	
383	Utilities scanning and expose existing UU	30 days	Sun 29/8/21	Mon 27/9/21	
384	Arrange of diversion existing UG utilities	90 days	Tue 28/9/21	Sun 26/12/21	
385	Construct new cable trenches	173 days	Mon 27/12/21	Fri 17/6/22	
386	Realign / install new UG utilities	60 days	Sat 18/6/22	Tue 16/8/22	
387	Backfill and reinstatement + ready for cable laying by others	45 days	Wed 17/8/22	Fri 30/9/22	
388	Section G (v) - Shunt Reactor Compound and External Works at Area F17	666 days	Fri 4/12/20	Fri 30/9/22	
389	Temporary Traffic Arrangement approval	45 days	Fri 4/12/20	Sun 17/1/21	
390	Subletting / Fabrication / Delivery	100 days	Fri 25/12/20	Sat 3/4/21	
391	BD approval & consent for pipe pile installation	90 days	Fri 4/12/20	Wed 3/3/21	
392	Area Possession & Clearance	14 days	Thu 4/3/21	Wed 17/3/21	
393	Removal of aboveground services	21 days	Thu 18/3/21	Wed 7/4/21	
394	Utilities scanning and expose existing UU	15 days	Thu 8/4/21	Thu 22/4/21	
395	Arrange of diversion existing UG utilities	45 days	Fri 23/4/21	Sun 6/6/21	
396	Install pipe piles	61 days	Sun 23/5/21	Thu 22/7/21	
397	BA14 for pipepile and BD consent for ELS	28 days	Fri 23/7/21	Thu 19/8/21	
398	Excavation & install earthing	35 days	Fri 20/8/21	Thu 23/9/21	
399	Construct Pile Caps and Tie Beams	45 days	Fri 24/9/21	Sun 7/11/21	
400	Backfill & Erect scaffold	21 days	Mon 8/11/21	Sun 28/11/21	
401	Construction of SRC Walls	75 days	Mon 29/11/21	Fri 11/2/22	
402	Wall finish and remove scaffolding	24 days	Sat 12/2/22	Mon 7/3/22	
403	Construct new cable trenches	60 days	Tue 8/3/22	Fri 6/5/22	
404	Install new UG Utilities, Backfill and reinstatement + ready for cable laying by Others for DAX1	55 days	Thu 7/4/22	Tue 31/5/22	
405	Realign / install new UG utilities (for DAX2, APX1 & APX3)	117 days	Sat 7/5/22	Wed 31/8/22	
406	Backfill and reinstatement + ready for cable laying by others (for DAX2, APX1, & APX3)	30 days	Thu 1/9/22	Fri 30/9/22	
407	Section G (vi) - 275kV cable trenches and External Works at Area F18	397 days	Sat 1/5/21	Wed 1/6/22	
408	Temporary Traffic Arrangement approval	45 days	Sat 1/5/21	Mon 14/6/21	
409	Subletting / Fabrication / Delivery	60 days	Tue 15/6/21	Fri 13/8/21	
410	Area Possession & Clearance	15 days	Sat 1/5/21	Sat 15/5/21	
411	Removal of aboveground services	30 days	Sun 16/5/21	Mon 14/6/21	
412	Utilities scanning and expose existing UU	45 days	Tue 15/6/21	Thu 29/7/21	
413	Arrange of diversion existing UG utilities	60 days	Fri 30/7/21	Mon 27/9/21	
414	Construct new cable trenches	172 days	Tue 28/9/21	Fri 18/3/22	
415	Realign / install new UG utilities	45 days	Sat 19/3/22	Mon 2/5/22	
416	Backfill and reinstatement + ready for cable laying by others	30 days	Tue 3/5/22	Wed 1/6/22	
417	Section G (vii) - Flood wall at No. 5 CW Intake Area along HUA at Area F20A	521 days	Fri 4/12/20	Sun 8/5/22	
418	Area Possession & Clearance	30 days	Fri 4/12/20	Sat 2/1/21	
419	Subletting / Fabrication / Delivery	60 days	Fri 25/12/20	Mon 22/2/21	
420	Temporary Traffic Arrangement approval	300 days	Fri 4/12/20	Wed 29/9/21	
421	ELS BD approval & consent	90 days	Fri 18/12/20	Wed 17/3/21	
422	Demolition of existing carriageway	30 days	Thu 11/11/21	Fri 10/12/21	
423	Removal of aboveground services	21 days	Thu 30/9/21	Wed 20/10/21	
424	Utilities scanning and expose existing UU	21 days	Thu 21/10/21	Wed 10/11/21	
425	Arrange of diversion existing UG utilities	30 days	Sat 11/12/21	Sun 9/1/22	
426	Excavation and construction of new Flood wall	65 days	Mon 10/1/22	Tue 15/3/22	
427	Realign / install new UG utilities	30 days	Wed 16/3/22	Thu 14/4/22	
428	Backfill and construct new carriageway	18 days	Fri 15/4/22	Mon 2/5/22	
429	Mis. Work for completion	6 days	Tue 3/5/22	Sun 8/5/22	
430	Section G (viii) - Flood wall at No. 5 CW Intake Area along HUA at Area F20B	365 days	Fri 1/10/21	Fri 30/9/22	
431	Area Possession & Clearance	45 days	Fri 1/10/21	Sun 14/11/21	
432	Subletting / Fabrication / Delivery	90 days	Fri 22/10/21	Wed 19/1/22	
433	Temporary Traffic Arrangement approval	14 days	Fri 1/10/21	Thu 14/10/21	
434	ELS BD approval & consent	90 days	Fri 15/10/21	Wed 12/1/22	



Contract No. 19/83002 Lamma Power Station Extension Civil and Building Works for Unit L12

Master Programme

ID	Task Name	Duration	Start	Finish	
435	Demolition of existing carriageway	60 days	Fri 1/10/21	Mon 29/11/21	
436	Removal of aboveground services	21 days	Tue 30/11/21	Mon 20/12/21	
437	Utilities scanning and expose existing UU	21 days	Tue 21/12/21	Mon 10/1/22	
438	Arrange of diversion existing UG utilities	30 days	Tue 1/1/22	Wed 9/2/22	
439	Install Sheetpiles	55 days	Thu 10/2/22	Tue 5/4/22	
440	BA14 for sheetpile and BD consent for ELS	28 days	Wed 6/4/22	Tue 3/5/22	
441	Excavation and construction of new Flood wall	90 days	Wed 4/5/22	Mon 1/8/22	
442	Realignment / install new UG utilities	30 days	Tue 2/8/22	Wed 31/8/22	
443	Backfill and construct new carriageway	21 days	Thu 1/9/22	Wed 21/9/22	
444	Mis. Work for completion	9 days	Thu 22/9/22	Fri 30/9/22	
445	Section G (ix) - Bund wall modification works at South Seafront Road at Area F21	316 days	Fri 4/12/20	Fri 15/10/21	
446	Area Possession & Clearance	45 days	Fri 4/12/20	Sun 17/1/21	
447	Subletting / Fabrication / Delivery	90 days	Fri 25/12/20	Wed 24/3/21	
448	Temporary Traffic Arrangement approval	165 days	Fri 4/12/20	Mon 17/5/21	
449	ELS BD approval & consent	0 days	Thu 17/12/20	Thu 17/12/20	
450	Demolition of existing carriageway	14 days	Tue 18/5/21	Mon 31/5/21	
451	Removal of aboveground services	14 days	Tue 1/6/21	Mon 14/6/21	
452	Utilities scanning and expose existing UU	21 days	Tue 15/6/21	Mon 5/7/21	
453	Arrange of diversion existing UG utilities (include FS pipe under 17/8002)	40 days	Tue 6/7/21	Sat 14/8/21	
454	Excavation and expose existing bund wall & demolish	18 days	Wed 28/7/21	Sat 14/8/21	
455	Construction new bund wall for road junction	21 days	Sat 4/9/21	Fri 24/9/21	
456	Realignment / install new UG utilities (include FS pipe under 17/8002)	60 days	Sun 1/8/21	Wed 29/9/21	
457	Backfill and construct new carriageway	16 days	Thu 30/9/21	Fri 15/10/21	
458	Mis. Work for completion	5 days	Mon 11/10/21	Fri 15/10/21	
459	Section G (x) - DAX Cable Diversion Works (from Part I to Part IV)	756 days	Fri 4/12/20	Sat 31/12/22	
460	Temporary Traffic Arrangement approval	14 days	Fri 4/12/20	Thu 17/12/20	
461	Subletting / Fabrication / Delivery	90 days	Fri 25/12/20	Wed 24/3/21	
462	Area Possession & Clearance	45 days	Fri 4/12/20	Sun 17/1/21	
463	Identification of existing cable trench	7 days	Mon 18/1/21	Sun 24/1/21	
464	Part 1 Re-excavation works incl.construction of joint bay (at Water Reservoir Road)	246 days	Mon 25/1/21	Mon 27/9/21	
465	Part 1 Re-excavation works incl construction of joint bay (other than Reservoir road base on revised routing)	310 days	Mon 25/1/21	Tue 30/11/21	
466	Part 2 Re-excavation works incl. joint bay	120 days	Mon 1/11/21	Mon 28/2/22	
467	Part 3 Re-excavation works incl. joint bay	242 days	Mon 1/11/21	Thu 30/6/22	
468	Part 4 Re-excavation works incl. joint bay & new oil tank pits	92 days	Sat 1/10/22	Sat 31/12/22	
469	Backfill & Reinstatement Part 1	61 days	Mon 1/11/21	Fri 31/12/21	
470	Backfill & Reinstatement Part 2	61 days	Sun 1/5/22	Thu 30/6/22	
471	Backfill & Reinstatement Part 3	61 days	Thu 1/9/22	Mon 31/10/22	
472	Section H - All remaining works shall be completed for reporting completion to BD and ready for OP inspection (PS1.4.4)	775 days	Wed 17/11/21	Sun 31/12/23	
473	Deferred works (MSB & HRS) Listed in PS 1.4.4	272 days	Wed 17/11/21	Mon 15/8/22	
474	Construction of L12 MSB roof between GL12-G to 12-H and 12-2 to 12-6 after the overhead crane installation by the Employer's Specialist Contractors	38 days	Wed 17/11/21	Fri 7/1/22	
475	Construction of walls of L12 MSB below 1/F along GL 12-6 from GL12-B to 12-C and the associated staircases including the enclosure walls between G/F and 1/F. The Contractor shall allow access for the Employer's Specialist Contractors to use the hoisting we	92 days	Mon 16/5/22	Mon 15/8/22	
476	Provision in associated with hoisting well	21 days	Mon 6/6/22	Sun 26/6/22	
477	Construction of internal partition wall at 1/F of L12 MSB along GL 12-C from GL 12-2 to 12-3 AND North Façade at 1/F of L12 MSB along GL 12-1 from GL 12-B to 12-C	30 days	Sat 16/4/22	Sun 15/5/22	
478	Construction of metal fence and the associated Fire Services (F.S.) installations and installation of removable shelter at Transformer Area	92 days	Mon 16/5/22	Mon 15/8/22	
479	Deferred works (DAX1 and DAX2) Listed in PS 1.4.4	334 days	Wed 1/2/23	Sun 31/12/23	
480	Backfilling of whole DAX1 compartment inside existing joint bay "STJ12" and the new oil tank pit A located aside existing joint bay "STJ12".	59 days	Wed 1/2/23	Fri 31/3/23	
481	Re-excavation of whole DAX2 compartment inside existing joint bay "STJ12".	61 days	Tue 1/8/23	Sat 30/9/23	
482	Backfilling of whole DAX2 compartment inside existing joint bay "STJ12" and the new oil tank pit B located aside existing joint bay "STJ12".	61 days	Wed 1/11/23	Sun 31/12/23	
483	Deferred works (External Work) Listed in PS 1.4.4	121 days	Thu 1/12/22	Fri 31/3/23	
484	Final reinstatement of access roads and pavement surrounding and within L12 MSB and L12 HRS area	62 days	Thu 1/12/22	Tue 31/1/23	
485	Installation of trench cover and road reinstatement of gas pipe and cable trenches within Area F5, F14, F16, F17 and F18.	90 days	Sun 1/1/23	Fri 31/3/23	
486	Backfilling and road-reinstatement of 275kV cable trenches	90 days	Sun 1/1/23	Fri 31/3/23	
487	All Remaining work ready for OP inspection	0 days	Tue 28/2/23	Tue 28/2/23	
488	STATUTORY SUBMISSION, INSPECTION & APPROVAL	560 days	Tue 16/11/21	Mon 29/5/23	
489	WSD Statutory Submission, Inspection and Approval WWO Part I to III Submission / Approval	256 days	Tue 16/11/21	Fri 29/7/22	
490	WSD: Submit to WSD Form WWO 046 Part I to II - FOR ACB Building (for Ext Works at later stage)	0 days	Tue 16/11/21	Tue 16/11/21	
491	WSD: Vetting Form WWO 046 Part I and II Submission	90 days	Wed 17/11/21	Mon 14/2/22	
492	WSD: Issued of Form WWO 046 Part III by WSD - FOR ACB Building	0 days	Tue 15/2/22	Tue 15/2/22	
493	WSD: Prepare for 1st Amendment for Plumbing Plan	60 days	Tue 15/2/22	Fri 15/4/22	
494	WSD: Submit to WSD 1st Amendment for Plumbing Plan	0 days	Fri 15/4/22	Fri 15/4/22	
495	WSD: Vetting of Plumbing Plan by WSD	60 days	Sat 16/4/22	Tue 14/6/22	
496	WSD: 1st Approval for Plumbing Plan by WSD	0 days	Tue 14/6/22	Tue 14/6/22	
497	WSD: Prepare and Submit for Final Amendment for Plumbing Plan	45 days	Wed 15/6/22	Fri 29/7/22	
498	WSD: Vetting and Final Approval for Plumbing Plan by WSD	0 days	Fri 29/7/22	Fri 29/7/22	
499	WSD Statutory Submission, Inspection and Approval WWO Part IV to V Fire Services Water Submission / Approval	33 days	Fri 29/7/22	Wed 31/8/22	
500	WSD: Form WWO 046 Part IV Submission (FS)	0 days	Fri 29/7/22	Fri 29/7/22	
501	WSD: WSD Received Form WWO046 Part IV and arrange for inspection (FS)	7 days	Sat 30/7/22	Fri 5/8/22	
502	WSD: WSD Inspection (FS)	7 days	Sat 6/8/22	Fri 12/8/22	
503	WSD: WWO 046 Part V Endorsement by WSD (FS)	12 days	Sat 13/8/22	Wed 24/8/22	
504	WSD: WSD Processing Water Supply Connection Certificate (FS)	7 days	Thu 25/8/22	Wed 31/8/22	
505	WSD: Issue by WSD Water Supply Connection Certificate (FS)	0 days?	Wed 31/8/22	Wed 31/8/22	
506	WSD Statutory Submission, Inspection and Approval WWO Part IV to V Potable /Flush Water Submission / Approval	60 days	Fri 19/8/22	Tue 18/10/22	
507	WSD: Form WWO 046 Part IV Submission (Fresh/Flush)	0 days	Fri 19/8/22	Fri 19/8/22	
508	WSD: WSD Acknowledge Form WWO 046	6 days	Sat 20/8/22	Thu 25/8/22	
509	WSD: WSD Inspection with Testing to lead (Fresh/Fluhs)	12 days	Fri 26/8/22	Tue 6/9/22	
510	WSD: Cleansing/Disinfecting Water Tanks / Piping System (Fresh/Flush)	6 days	Wed 7/9/22	Mon 12/9/22	
511	WSD: Collection of Sample for Testing at Accredited Lab (Fresh/Flush)	12 days	Tue 13/9/22	Sat 24/9/22	
512	WSD:Accredited Lab Testing Report of Sample to WSD	12 days	Sun 25/9/22	Thu 6/10/22	
513	WSD: Vetting of Test Report by WSD	6 days	Fri 7/10/22	Wed 12/10/22	
514	WSD: Issue of WWO 046 Part V (Fresh/Flush)	0 days	Wed 12/10/22	Wed 12/10/22	
515	WSD: WSD Processing WWO1005 Water Certification (Fresh/Flush)	6 days	Thu 13/10/22	Tue 18/10/22	
516	WSD: Issue by WSD WWO 1005 Water Certification (Fresh/Flush)	0 days	Tue 18/10/22	Tue 18/10/22	
517	EMSD LIFT Statutory Submission, Inspection and Approval	45 days	Sat 26/3/22	Mon 9/5/22	
518	EMSD: Submission of Lift Form LE5 to EMSD	12 days	Sat 26/3/22	Wed 6/4/22	
519	EMSD: EMSD Makes arrangement for Lift Installation	5 days	Thu 7/4/22	Mon 11/4/22	
520	EMSD: EMSD Inspection to Lift Installation	14 days	Tue 12/4/22	Mon 25/4/22	
521	EMSD: Processing Lift Certificate (Form LE6)	14 days	Tue 26/4/22	Mon 9/5/22	
522	EMSD: Lift Issuance of Form 6 (Lift Certificate)	0 days	Mon 9/5/22	Mon 9/5/22	
523	HKE Transformer Final Inspection	120 days	Thu 30/6/22	Thu 27/10/22	
524	TX Room: Invite HKE For Transformer Room Inspection	7 days	Thu 30/6/22	Wed 6/7/22	
525	TX Room: Give Access to Transformer Room for HKE Contractor	0 days	Wed 6/7/22	Wed 6/7/22	
526	TX Room: Move-IN HKE Transformer Equipments	5 days	Thu 7/7/22	Mon 11/7/22	
527	TX Room: Install HKE Transformer, MEP Works & Testing	90 days	Tue 12/7/22	Sun 9/10/22	
528	TX Room: HKE Power Energization / Inspection	6 days	Mon 10/10/22	Sat 15/10/22	
529	TX Room: Metering Installation	12 days	Sun 16/10/22	Thu 27/10/22	
530	TX Room: HKE Power-ON Date	0 days	Thu 27/10/22	Thu 27/10/22	
531	DSD Drainage Completion Memo	65 days	Sun 2/10/22	Mon 5/12/22	
532	DSD: CCTV Survey Report on Completed Drainage	30 days	Sun 2/10/22	Mon 31/10/22	
533	DSD: Submitted CCTV Report & Form HPB1 of Completed Drainage to DSD For Technical Audit	7 days	Tue 1/11/22	Mon 7/11/22	
534	DSD: Completed Drainage System including TMC Inspection/Technical Audit by DSD	14 days	Tue 8/11/22	Mon 21/11/22	
535	DSD: Preparation of Drainage Connection Completion Memo by DSD	14 days	Tue 22/11/22	Mon 5/12/22	
536	DSD: Issue of Drainage Connection Completion Memo by DSD	0 days	Mon 5/12/22	Mon 5/12/22	
537	EPD Submission, Inspection and Approval	60 days	Thu 30/6/22	Mon 29/8/22	
538	EPD: License Application to EPD under APCO (Cap 311) for Generator Sets	0 days	Thu 30/6/22	Thu 30/6/22	
539	EPD: Vetting of Application by EPD under APCO (Cap 311) for Generator Sets	60 days	Fri 1/7/22	Mon 29/8/22	
540	EPD: Approval from EPD under APCO (Cap 311) for Generator Sets Installation	0 days	Mon 29/8/22	Mon 29/8/22	
541	FSD VAC Statutory Submission, Inspection and Approval	150 days	Wed 20/7/22	Fri 16/12/22	
542	Preparation of FSD VAC Drawings and Submission to HEC	60 days	Wed 20/7/22	Sat 17/9/22	
543	HEC: Review and Approval	30 days	Sun 18/9/22	Mon 17/10/22	
544	Preparation of VAC Drawings and Submission to FSD	30 days	Tue 18/10/22	Wed 16/11/22	
545	FSD: Review and Approval	30 days	Thu 17/11/22	Fri 16/12/22	
546	FSD Statutory Submission, Inspection and Approval	91 days	Tue 28/2/23	Mon 29/5/23	
547	Testing and Commissioning (Individual System - FSI Related)	45 days	Tue 28/2/23	Thu 13/4/23	
548	FSD: All Sections FS Ingration Test by NSC BS	15 days	Fri 14/4/23	Fri 28/4/23	
549	FSD: Completion of FS Integration Test by NSC BS for FS314/501	0 days	Fri 28/4/23	Fri 28/4/23	
550	FSD: Submit Form 213/314 & Form 501 Request for Inspection	0 days	Fri 28/4/23	Fri 28/4/23	
551	FSD: FSD Makes Arrangement for Inspection	7 days	Sat 29/4/23	Fri 5/5/23	
552	FSD: FSD Inspection	12 days	Sat 6/5/23	Wed 17/5/23	
553	FSD: Completion of FS Inspection	0 days	Wed 17/5/23	Wed 17/5/23	
554	FSD: FSD Processing FS Certificate Form 172	12 days	Thu 18/5/23	Mon 29/5/23	
555	FSD: Issue of Fire Services FS Certificate Form 172	0 days	Mon 29/5/23	Mon 29/5/23	
556	PRACTICAL COMPLETION	216 days	Tue 30/5/23	Sun 31/12/23	
557	BD Inspection	97 days	Tue 30/5/23	Sun 3/9/23	
558	BD: Application Form BA13 for OP Application	21 days	Tue 30/5/23	Mon 19/6/23	
559	BD: BD Inspection Date	15 days	Tue 20/6/23	Tue 4/7/23	
560	BD: Reinspection date with defects and rectification works	60 days	Wed 5/7/23	Sat 2/9/23	
561	BD: Obtain Occupation Permit (OP) from BD	1 day	Sun 3/9/23	Sun 3/9/23	
562	As-Built Drawings & Handover Documentation	120 days	Wed 14/6/23	Wed 11/10/23	
563	Prepare and Submit As-Built Drawings & Handover Documentation	45 days	Wed 14/6/23	Fri 28/7/23	
564	Review and Approval	45 days	Sat 29/7/23	Mon 11/9/23	
565	As-Built Drawings & Handover Documentation - Revision by MC	30 days	Tue 12/9/23	Wed 11/10/23	
566	Revised As-Built Drawings & Handover Documentation - Final Submission	0 days	Wed 11/10/23	Wed 11/10/23	
567	Completion of the Whole Contract Works	119 days	Mon 4/9/23	Sun 31/12/23	
568	1st Client Inspection for Review and Comments	30 days	Mon 4/9/23	Tue 3/10/23	
569	Defects and Rectification works	60 days	Wed 4/10/23	Sat 2/12/23	
570	2nd Client Inspection	14 days	Sun 3/12/23	Sat 16/12/23	
571	Minor Defects Rectification Works and Final Inspection	15 days	Sun 17/12/23	Sun 31/12/23	
572	PRACTICAL COMPLETION	0 days	Sun 31/12/23	Sun 31/12/23	



