

Contract No. 19/83002 Lamma Power Station Extension Civil and Building Works for Unit L12

MASTER PROGRAMME

ID	Task Name	Duration	Feb	Mar	Apr	May
1	KEY DATES & MILESTONES	1123 days				
2	Contract Period	1123 days				
3	Deferred Work Completion Key Dates	784 days				
4	Substantial Completion of the Whole Contract Works (1123 Days)	0 days				
5	SITE POSSESSION DATES	513 days				
6	Site Possession Date as phased site possession plan and PS1.4.2	0 days				
7	Site Possession Date as phased site possession plan and PS1.4.2	0 days				
8	Site Possession Date as phased site possession plan and PS1.4.2	0 days				
9	Site Possession Date as phased site possession plan and PS1.4.2	0 days				
10	Site Possession Date as phased site possession plan and PS1.4.2	0 days				
11	Site Possession Date as phased site possession plan and PS1.4.2	0 days				
12	COMPLETION DATES as per PS1.4.2 Time for Completion	609 days				
13	Section A1 (i) - Area south of L12 MSB and L12 HRSG from GL12-F eastwards leading to Chimney Road at Area F1 & F2	0 days				
14	Section A1 (ii) - Supporting structures for overhead cranes of L12 MSB including the associated roof structure except the roof deferred works	0 days				
15	Section A2 (i) External Works including CW Inlet Culvert at Area F8A	0 days				
16	Section A2 (ii) External Works including CW Inlet Culvert at Area F8B	0 days				
17	Section A2 (iii) External Works including CW Inlet Culvert at Area F8C	0 days				
18	Section B1 - Area south of L12 MSB from GL12-F westwards leading to Station Road at Area F3	0 days				
19	Section B2 (i)- Southern Part of L12 HRSG areas and its surrounding refer to Area F6B as shown in drawing no 553/03/2040 including the foundations for Gas Exhaust Duct	0 days				
20	Section B2 (ii) - Remaining northern part of L12 HRSG area and its surrounding at Area F6A and F6C	0 days				
21	Section B2 - (iii) L12 Turbo Block foundation including the L12 MSB ground floor together with the equipment foundations between GL 12-F to 12-H and 12-1 to 12-6 for the installation of power generator, air inlet duct and lube oil reservoir	0 days				
22	Section B2 - (iv) G/F of L12 MSB including the Condenser Pit, Circulating Water Pipe Pit and equipment foundations between GL 12-B to 12-C and 12-1 to 12-6 for the installation of condenser	0 days				
23	Section C - (i) Roads and external grounds surrounding L12 MSB and L12 HRSG in addition to the southern & eastern areas mentioned above in Area F5	0 days				
24	Section C - (ii) Whole of L12 MSB including the pipe and cable rack along south façade of L12 MSB with all underground utilities at Area F4 including C.W. Inlet and Outlet Culvert except the deferred works	0 days				
25	Section C - (iii) Link Bridge between L11 and L12 MSB including their associated A&A at L11 MSB	0 days				
26	Section D - (i) Microwave Antenna Room and Chimney Windshield for the installation of microwave equipment and antenna	0 days				
27	Section D (ii) - No. 5 Chimney with L12 Steel Flue liner	0 days				
28	Section E (i) Tx Room of Administration and Control Building	0 days				
29	Section E (ii) - G/F,1/F, 2/F & Hoisting Well of Admin. & Control Building	0 days				
30	Section E (iii) - Whole of Admin. And Control Building	0 days				
31	Section F (i) - Gas Receiving Station and L12 Gas Receiving Station Equipment Room (GRS) Area Extension at Area F14	0 days				
32	Section F (ii) - Pipe and Cable rack and external work at Area F9A and F9B	0 days				
33	Section F (iii) - No. 5 CW Equipment Room, pipe and cable rack, external works at Area F10	0 days				
34	Section G (i) - External Work surrounding Area F11	0 days				
35	Section G (ii) - External Works at Area F12 & F13	0 days				
36	Section G (iii) - FS Modification works along South Seafront Road at Area F15	0 days				
37	Section G (iv) - 275kV cable trenches and External Works at Area F16	0 days				
38	Section G (v) - Shunt Reactor Compound and External Works at Area F17	0 days				
39	Section G (vi) - 275kV cable trenches and External Works at Area F18	0 days				
40	Section G (vii) - Flood Wall at No. 4 CW Intake Area along HUA at Area F20A	0 days				
41	Section G (viii) - Flood wall at No. 5 CW Intake Area along HUA at Area F20B	0 days				
42	Section G (ix) - Bund wall modification works at South Seafront Road at Area F21	0 days				
43	Section G (x) - DAX Cable Diversion Works (from Part I to Part IV)	0 days				
44	Section H - All remaining works shall be completed for reporting completion to BD and ready for OP inspection	0 days				
45	GENERAL & PRELIMINARY	228 days				
46	First Mobilization	18 days				
47	Set up Temporary Site Office and Welfare Facilities	90 days				
48	Permit Applications & Statutory Submissions	120 days				
49	Existing Utilities scanning & Excavation Permit	45 days				
50	Tower Crane erections	60 days				
51	TECHNICAL SUBMISSION AND APPROVAL	314 days				
52	BD Approval & Consent (If required)	0 days				
53	Submission and Approval of Master Programme	14 days				
54	Work Execution Overall Plan submission & approval	14 days				
55	Material Submissions and approval	300 days				
56	Method Statement submission and approval	300 days				
57	BIM Model, CSD & CBWD Submission & approval	120 days				
58	Structure Steelwork Connection Design Submission & BD approval	45 days				
59	Structure Steelwork Shop Drawing & Approval	30 days				
60	Metal Cladding, louvre & windows submission & BD approval	45 days				
61	Metal Cladding, louvre & windows shop drawing submission	45 days				
62	Order, Off Site Fabrication and Delivery (S. Steel & Cladding & louvres)	120 days				
63	ELS Submission and BD approval	90 days				
64	No. 5 Chimney windshield temporary work submission, approval & fabrication	60 days				
65	Steel Flue Assessment Report and Design Drawings submission & approval	60 days				
66	Folding Shutters Shop Drawing Submission & Approval	30 days				
67	Fabrication & Delivery of Folding Shutters	180 days				
68	Sewage Pump System Design submission & approval	45 days				
69	Fabrication & Delivery of Sewage Pump	180 days				
70	Other material submission & approval & delivery	180 days				
71	Other material submission & approval & delivery	180 days				
72	CONSTRUCTION	1123 days				
73	Coordination with the Employer's Specialist Contractors	421 days				
74	Installation of Puddle Pipes at C.W. outlet Culvert	7 days				
75	Installation of Puddle Pipes at C.W. Inlet Culvert	7 days				
76	Template setting at L12 Turbo Block Foundation	45 days				
77	Template setting of holding down bolts at HRSG column base	45 days				
78	I-beam / channel base installation on top of transformer foundations at Transformer Area	45 days				
79	Overhead crane erection at turbine hall using access through a temporary opening at L12 MSB roof between GL12-G to 12-H and 12-2 to 12-6	38 days				
80	Condenser assembly and erection using access through a temporary façade opening at L12 MSB below 1/F along GL 12-6 from GL12-B to 12-C including a clear space below 1/F between GL 12-B to 12-C	122 days				
81	Installation of power train equipment including air inlet duct using access through a temporary façade opening at L12 MSB below 1/F along GL 12-6 from GL12-F to 12-H including a clear space below 1/F of the above area	121 days				
82	Installation of embedded materials such as holding down bolts for equipment foundations - Commencement	0 days				
83	Section A1 (i) - Area south of L12 MSB and L12 HRSG from GL12-F eastwards leading to Chimney Road at Area F1 & F2	301 days				
84	Area Possession & Clearance	30 days				
85	Subletting / Fabrication / Delivery (both for Area F1 and Area F2)	60 days				
86	Excavation for CW Inlet Culvert (Type D Construction Area)	14 days				
87	Installation CW Inlet Culvert pipe + testing	30 days				
88	Construction of Thrust Box & Manholes,etc	14 days				
89	Backfill	14 days				
90	Construction UG Utilities 2m deep below further surface	30 days				
91	Temporary Paving and handover for plant erection	13 days				
92	Section A1 (ii) - Supporting structures for overhead cranes of L12 MSB including the associated roof structure except the roof deferred works	301 days				
93	Area Possession & Clearance	45 days				
94	Subletting / Fabrication / Delivery	210 days				
95	Complete structural steel erection	0 days				
96	Install Crane Girders	18 days				
97	Construction of roof slab (except defer work)	21 days				
98	Touch up and handover for install overhead cranes	3 days				
99	Section A2 (i) External Works including CW Inlet Culvert at Area F8A	301 days				
100	BD consent for Sheetpile installation	30 days				

to Part IV)

Section H - All remaining works shall be completed for reporting completion to BD and ready for OP inspection








Contract No. 19/83002 Lamma Power Station Extension Civil and Building Works for Unit L12

MASTER PROGRAMME

ID	Task Name	Duration	Feb	Mar	Apr	May
101	Subletting / Fabrication / Delivery (both for Area F8A-F8B)	30 days				
102	Area Possession & Clearance	14 days				
103	Install Sheet pile	55 days				
104	BD Consent for ELS	28 days				
105	ELS and install CW Inlet Pipe (NW to N direction)	60 days				
106	Construction of Thrust Box & Manholes,etc	36 days				
107	Backfill, UG Utilities and Road Paving	79 days				
108	Section A2 (ii) External Works including CW Intet Culvert at Area F8B	483 days				
109	Area Possession & Clearance	30 days				
110	BD consent for Sheetpile installation	30 days				
111	Install Sheet pile	90 days				
112	BD Consent for ELS	28 days				
113	ELS and install CW Inlet Pipe	90 days				
114	Construction of Thrust Box & Manholes,etc	60 days				
115	Backfill, UG Utilities and Road Paving	96 days				
116	Section A2 (iii) External Works including CW Inlet Culvert at Area F8C	182 days				
117	Area Possession & Clearance	30 days				
118	Subletting / Fabrication / Delivery (for Area F8C)	60 days				
119	BD consent for Sheetpile installation	30 days				
120	Install Sheet pile	34 days				
121	BD Consent for ELS	28 days				
122	ELS and install CW Inlet Pipe	40 days				
123	Construction of Thrust Box & Manholes,etc	30 days				
124	Backfill, UG Utilities and Road Paving	20 days				
125	Section B1 - Area south of L12 MSB from GL12-F westwards leading to Station Road at Area F3	377 days				
126	Area Possession & Clearance	30 days				
127	Subletting / Fabrication / Delivery	120 days				
128	Complete CW Pipe Installation & Thrust box	45 days				
129	Backfill	14 days				
130	Construction of Storm Drain & Manholes	80 days				
131	Temp Paving and handover for Condenser Move in	20 days				
132	Section B2 - (i) Southern part of L12 HRSG area and its surrounding at Area F6B including the foundations for Gas Exhaust Duct	243 days				
133	Area Possession & Clearance	30 days				
134	Subletting / Fabrication / Delivery (for F6B Civil and E&M)	120 days				
135	Construction of Underground pits	35 days				
136	Excavation & Construct Pile Caps & Tie Beams & Piers	60 days				
137	Construction HRSG & Gas Duct foundations	45 days				
138	Construction of HRSG Equipment Room incl. ABWF & BS (except T&C)	150 days				
139	Construction underground utilities within HRSG	45 days				
140	Backfill & Construction on-grade slabs & RC plinths on top	60 days				
141	Backfill and Temporary paving	21 days				
142	Section B2 (ii) - Remaining northern part of L12 HRSG area and its surrounding at Area F6A and F6C	319 days				
143	Area Possession and Clearance at Area F6A	30 days				
144	Subletting / Fabrication / Delivery (for Area F6A and F6C civil)	90 days				
145	Construction of Underground pits	30 days				
146	Excavation & Construct Pile Caps & Tie Beams & Piers	60 days				
147	Construction underground utilities within HRSG	21 days				
148	Backfill & Construction on-grade slabs & RC plinths on top	21 days				
149	Construct RC Walls	90 days				
150	Construction of Underground utilities at F6C	60 days				
151	Backfill and Temporary paving	15 days				
152	Section B2 - (iii) L12 Turbo Block foundation including the L12 MSB ground floor together with the equipment foundations between GL 12-F to 12-H and 12-1 to 12-6 for the installation of power generator, air inlet duct and lube oil reservoir	408 days				
153	Area Possession & Clearance	45 days				
154	Subletting / Fabrication / Delivery (Civil+ABWF+BS for MSBL12)	150 days				
155	Complete excavation at Type A&C Construction Area	0 days				
156	Excavation & Pile Caps & Tie Beams + Slabs (Turbo Block North)	75 days				
157	Backfill and construction turbine block & equipment foundation	40 days				
158	Excavation & Pile Caps & Tie Beams + Slabs (Turbo Block South)	45 days				
159	Construction of internal drainage & on-grade slab	30 days				
160	Construction turbine block columns and upper portion for plant embed installation	21 days				
161	Concrete Turbine upper part foundation & clear falsework	30 days				
162	Construction of Lube Oil Room	45 days				
163	Concrete RC walls	50 days				
164	ABFW Works	30 days				
165	Building Services Works	45 days				
166	Remove temporary falsework and scaffolding for installation of power generator	13 days				
167	Section B2 - (iv) G/F of L12 MSB including the Condenser Pit, Circulating Water Pipe Pit and equipment foundations between GL 12-B to 12-C and 12-1 to 12-6 for the installation of condenser	377 days				
168	Area Possession & Clearance	45 days				
169	Subletting / Fabrication / Delivery (for MSB L12 civil)	150 days				
170	Excavation to foundation level at ELS SP Type A & C	30 days				
171	Install CW Outlet pipe	30 days				
172	Construction of CW Outlet Box + lowest tie beam & caps	50 days				
173	Construction of pile caps & tie beams & sump pits up to +2.5mPD	26 days				
174	Backfill & Construction of CW Inlet Box + tie beams	24 days				
175	Construction of pile caps & tie beams at SunShadeCover Area	18 days				
176	Backfill and Construction ground beams & trenches & equipment foundations	14 days				
177	Construction of indoor underground drainage	14 days				
178	Backfill & construction on-grade slabs	18 days				
179	Construction Column casting and RC walls	50 days				
180	ABFW Works	16 days				
181	Building Services Works	45 days				
182	Mis. Works and Ready for condenser move in	29 days				
183	Section C - (i) Roads and external grounds surrounding L12 MSB and L12 HRSG in addition to the southern & eastern areas mentioned above in Area F5	408 days				
184	Area Possession & Clearance	30 days				
185	Subletting / Fabrication / Delivery	210 days				
186	Complete substructure & Steel Erection works for MSB	0 days				
187	Construction all utilities deeper than 2m from future road level	60 days				
188	Construction of cable trenches	90 days				
189	Backfill and lay temporary paving	21 days				
190	Section C - (ii) Whole of L12 MSB including the pipe and cable rack along south facade of L12 MSB with all underground utilities at Area F4 including C.W. Inlet and Outlet Culvert except the deferred works	408 days				
191	Area Possession & Clearance	45 days				
192	Subletting / Fabrication / Delivery	120 days				
193	Construction of pile caps & tie beams at Transformer Area	30 days				
194	Backfill and on-grade slab at transformer Area	21 days				
195	Construction of Fire Walls at Transformer Area	45 days				
196	Excavation & Construction Blow Down Sum pit (SP Type B)	50 days				
197	Preparation for S.Steelwork Erection	7 days				
198	Structural Delivery & Erection (Turbine Hall North fr G.L. 1-3/H->B)	35 days				
199	Structural Delivery & Erection (Equipment Floors)	55 days				
200	Structural Delivery & Erection (Turbine Hall South + East Elevation)	40 days				
201	Joint Tightening and touch up coating	145 days				
202	External Scaffolding Erection	150 days				
203	Construction 1/F RC Slab	14 days				
204	Construction 2/F RC Slab	18 days				
205	Construction 3/F RC Slab	18 days				
206	Construction 4/F RC Slab	18 days				
207	Construction 5/F RC Slab	18 days				
208	Construction 6/F RC Slab	14 days				
209	Construction Upper Roof RC Slab	10 days				
210	Construction Main Roof RC Slab	25 days				
211	Construction Defer Roof RC Slab (G.L. G-H)	14 days				
212	Construction of Staircase ST-01 & lift shaft & machine room	150 days				
213	Construction M/F RC Slab	14 days				
214	Lift Installation	75 days				
215	Construction of Staircase ST-02 except defer work	75 days				
216	Construction of RC plinth, kerbs & parapet Walls	75 days				

REVISED MASTER PROGRAMME
4 JAN 2021 Rev. 1-A



Task  Split  Milestone  Summary 

Contract No. 19/83002 Lamma Power Station Extension Civil and Building Works for Unit L12

MASTER PROGRAMME

ID	Task Name	Duration				
			Feb	Mar	Apr	May
217	Erection of Skylight & Roof Features	56 days				
218	Waterproofing & Flooring at Roof	50 days				
219	ABFW Works	120 days				
220	Building Services Works	135 days				
221	Metal Cladding, Windows and Louvres incl. roof feature	145 days				
222	Removal of external scaffolding	95 days				
223	Installation of Catwalk at south elevation	21 days				
224	Cladding, ABWF & BS Works	30 days				
225	Removal of temporary works & clearance for plant erection contractor	30 days				
226	Section C - (iii) Link Bridge between L11 and L12 MSB includin their associated A&A at L11 MSB	408 days				
227	BD Consent	0 days				
228	Subletting / Fabrication / Delivery (For BS and ABWF)	250 days				
229	Clearing Works and plant set-up	30 days				
230	Dismantle of north scaffold for link bridge erection	0 days				
231	A&A works at South of L11 MSB	30 days				
232	Erection of link bridge structural steel	30 days				
233	Casting of bridge deck	11 days				
234	Metal roofing installation	24 days				
235	ABWF work	30 days				
236	BS Works	20 days				
237	Ready for power cable laying work by others	0 days				
238	Section D - (ii) No. 5 Chimney with L12 Steel Flue Liner	485 days				
239	Area Possession & Clearance	45 days				
240	Subletting / Fabrication / Delivery (For Civil and BS for Microwave Antenna and Equipment)	120 days				
241	Excavation & Pile Cap & Backfill + Ground slab	45 days				
242	Tower Crane erection (Optional)	28 days				
243	Construction of Wind Shiled + clearance for internal floors and flue	150 days				
244	Structural steel fabrication & Delivery for floors and staircase	90 days				
245	Erection of steel floors	60 days				
246	Construction of G/F room incl. Microwave Antenna Rm	45 days				
247	Construction of 1/F RC slab	14 days				
248	Construction of 2/F RC slab	14 days				
249	Construction of 3/F RC slab	16 days				
250	Construction of 4/F RC slab	16 days				
251	Construction of 5/F RC slab	18 days				
252	Construction of Roof RC slab	18 days				
253	Steel Flue fabrication and delivery	145 days				
254	Set up for steel flue installation	14 days				
255	Lift & install steel flue liner + cladding works	90 days				
256	Section D (i) - ABWF and BS Works at Microwave Antenna Room and Chimney Windshield for installation of microwave and antenna	209 days				
257	Remaining ABWF & BS Works	100 days				
258	Lift installation	90 days				
259	Installation Louvre & Doors	30 days				
260	Mis works, Demobilization and ready for gas duct connection	17 days				
261	Section E - (iii) Administration and Control Building	513 days				
262	Area Possession & Clearance + BD consent	60 days				
263	Subletting / Fabrication / Delivery (For Civil+BS+ABWF)	21 days				
264	Excavation works	45 days				
265	Main Earth Grid Installation	45 days				
266	Pile cap and Tie Beam	45 days				
267	Tower Crane Erection	30 days				
268	Substructure + Bearing walls + On grade slabs	30 days				
269	Construction of RC up to 1/F incl. staircases	50 days				
270	Construction of RC up to 2/F incl. staircases	55 days				
271	Construction of RC up to 3/F incl. staircases	55 days				
272	Tempoary Hoist erection	14 days				
273	Construction of RC up to 4/F incl. staircases	30 days				
274	Construction of RC up to R/F incl. staircases	30 days				
275	Construction of RC up to lift machine room	21 days				
276	Construction of RC up to UR/F	21 days				
277	External Wall Finish, Cladding + Windows and Louvres + Features	100 days				
278	Removal of external scaffolding	45 days				
279	Waterproofing & screeding	60 days				
280	ABWF at G/F	120 days				
281	Section E (i) Complete Transformer Room for move in	60 days				
282	Clearing Works and plant set-up	21 days				
283	Subletting / Fabrication / Delivery (For NSC Lift)	180 days				
284	ABWF at 1/F	100 days				
285	ABWF at 2/F	100 days				
286	ABWF at 3/F	120 days				
287	ABWF at 4/F	90 days				
288	ABWF at R/F	60 days				
289	ABWF at UR/F + Lift Machine Room	45 days				
290	Bridge Erection & Connection	50 days				
291	Building Services Works	160 days				
292	Submission of WW046 for completion	60 days				
293	Installation of Raised floors	60 days				
294	False ceiling after BS works	60 days				
295	Section E (ii) Handover G/F, 1/F, 2/F & Hoisting Well	0 days				
296	Subletting / Fabrication / Delivery (For BS+ABWF)	149 days				
297	Construction of New UG Grey Water Tank	60 days				
298	Removal of Tower Crane	7 days				
299	External utilites and road work	45 days				
300	Submission of WW046 for completion	30 days				
301	Submision of FS inspection	14 days				
302	Submision for OP Inspection	14 days				
303	Section F (i) - Gas Receiving Station and L12 Gas Receiving Station Equipment Room (GRS) Area Extension at Area F14	426 days				
304	Area Possession & Clearance + BD consent	90 days				
305	Subletting / Fabrication / Delivery	60 days				
306	Plate load test	30 days				
307	Construction Equipment room extension	145 days				
308	Modification of existing drainage	45 days				
309	Excavation & earthing for Skid foundations	21 days				
310	Construction of Skid foundation	45 days				
311	Construct underground utilities and drainage	45 days				
312	Backfill and road works	60 days				
313	Relocate / install new fencing for completion	21 days				
314	Mis. Work and ready for OP inspection	14 days				
315	Section F (ii) - Pipe and Cable rack and external work at Area F9A and F9B	515 days				
316	BD consent + Site Possession at Area F9A & F9B	90 days				
317	Excavation & Plate load test	45 days				
318	Construction new footing for pipe rack	45 days				
319	Underground utilites and road works for completion	72 days				
320	Structural Steel fabrication & Delivery	90 days				
321	Erection of new pipe rack	60 days				
322	Mis. Work and ready for OP inspection	21 days				
323	Section F (iii) - No. 5 CW Equipment Room, pipe and cable rack, external works at Area F10	273 days				
324	Area Possession & Clearance + BD consent	90 days				
325	Subletting / Fabrication / Delivery For ABWF + BS	150 days				
326	Excavation & Plate load test	30 days				
327	Construction new footing for equipment room	45 days				
328	Superstructure for equipment room	90 days				
329	ABWF Works	70 days				
330	BS Works	90 days				
331	Construction RC Wall & plinths & drainage at Chlorinator area	45 days				
332	External wall finish & remove scaffolding	30 days				
333	Excavation & Plate load test for pipe rack extension	30 days				
334	Construction new footing for pipe rack	45 days				
335	Underground utilites and road works for completion	60 days				
336	Structural Steel fabrication & Delivery	90 days				
337	Backfilling and prepare for steel erection	8 days				

Contract No. 19/83002 Lamma Power Station Extension Civil and Building Works for Unit L12


MASTER PROGRAMME

ID	Task Name	Duration	Feb	Mar	Apr	May
338	Erection of new pipe rack	70 days				
339	Mis. Work and ready for OP inspection	15 days				
340	Section G (i) - External Work surrounding Area F11	153 days				
341	Area Possession & Clearance after handover from No. 5 Intake Contractor	30 days				
342	Subletting / Fabrication / Delivery	30 days				
343	Submission WWO046 for commencement	30 days				
344	Construct Underground utilities and drainage	30 days				
345	Install new FS Hydrant	20 days				
346	Submission WWO046 for completion	30 days				
347	Construction Road extension	58 days				
348	Construction road paving and install fencing	30 days				
349	Ready for OP inspection	15 days				
350	Section G (ii) - External Works at Area F12 & F13	666 days				
351	Area Possession & Clearance after handover from other	45 days				
352	Subletting / Fabrication / Delivery	180 days				
353	Excavation	21 days				
354	Submission WWO046 for commencement	30 days				
355	Construct Underground utilities and drainage	90 days				
356	Install new FS Hydrant	30 days				
357	Submission WWO046 for completion	30 days				
358	Construction Road extension	127 days				
359	Complete with Mis. Works for completion	15 days				
360	Section G (iii) - FS Modification works along South Seafront Road at Area F15	183 days				
361	Area Possession & Clearance after handover from other	45 days				
362	Subletting / Fabrication / Delivery	21 days				
363	Temporary Traffic Arrangement approval	14 days				
364	Utilities scanning and expose existing FS	14 days				
365	Determine new FS alignment	21 days				
366	Submission to FSD	14 days				
367	Modification of FS	60 days				
368	Backfill and reinstatement + report to FSD	60 days				
369	Section G (iv) - 275kV cable trenches and External Works at Area F16	518 days				
370	Area Possession & Clearance	60 days				
371	Subletting / Fabrication / Delivery	210 days				
372	Temporary Traffic Arrangement approval	60 days				
373	Removal of aboveground services	60 days				
374	Utilities scanning and expose existing UU	30 days				
375	Arrange of diversion existing UG utilities	90 days				
376	Construct new cable trenches	173 days				
377	Realignment / install new UG utilities	60 days				
378	backfill and reinstate & ready for cable laying by others	45 days				
379	Section G (v) - Shunt Reactor Compound and External Works at Area F17	666 days				
380	Temporary Traffic Arrangement approval	45 days				
381	Subletting / Fabrication / Delivery	100 days				
382	BD approval & consent for sheetpile installation	90 days				
383	Area Possession & Clearance	14 days				
384	Removal of aboveground services	21 days				
385	Utilities scanning and expose existing UU	15 days				
386	Arrange of diversion existing UG utilities	45 days				
387	Install pipe piles	61 days				
388	BA14 for pipepile and BD consent for ELS	28 days				
389	Excavation & install earthing	35 days				
390	Construct Pile Caps and Tie Beams	45 days				
391	Backfill & Erect scaffold	21 days				
392	Construction of SRC Walls	75 days				
393	Wall finish and remove scaffolding	24 days				
394	Construct new cable trenches	60 days				
395	Realignment / install new UG utilities	117 days				
396	Backfill and reinstate & ready for cable laying by others	30 days				
397	Section G (vi) - 275kV cable trenches and External Works at Area F18	397 days				
398	Temporary Traffic Arrangement approval	45 days				
399	Subletting / Fabrication / Delivery	60 days				
400	Area Possession & Clearance	15 days				
401	Removal of aboveground services	30 days				
402	Utilities scanning and expose existing UU	45 days				
403	Arrange of diversion existing UG utilities	60 days				
404	Construct new cable trenches	172 days				
405	Realignment / install new UG utilities	45 days				
406	backfill and reinstate & ready for cable laying by others	30 days				
407	Section G (vii) - Flood wall at No. 5 CW Intake Area along HUA at Area F20A	301 days				
408	Area Possession & Clearance	30 days				
409	Subletting / Fabrication / Delivery	60 days				
410	Temporary Traffic Arrangement approval	14 days				
411	ELS BD approval & consent	90 days				
412	Demolition of existing carriageway	30 days				
413	Removal of aboveground services	21 days				
414	Utilities scanning and expose existing UU	21 days				
415	Arrange of diversion existing UG utilities	30 days				
416	Install Sheet piles	45 days				
417	BA14 for sheetpile and BD consent for ELS	28 days				
418	Excavation and construction of new Flood wall	65 days				
419	Realignment / install new UG utilities	30 days				
420	backfill and construct new carriageway	18 days				
421	Mis. Work for completion	6 days				
422	Section G (viii) - Flood wall at No. 5 CW Intake Area along HUA at Area F20B	365 days				
423	Area Possession & Clearance	45 days				
424	Subletting / Fabrication / Delivery	90 days				
425	Temporary Traffic Arrangement approval	14 days				
426	ELS BD approval & consent	90 days				
427	Demolition of existing carriageway	60 days				
428	Removal of aboveground services	21 days				
429	Utilities scanning and expose existing UU	21 days				
430	Arrange of diversion existing UG utilities	30 days				
431	Install Sheetpiles	55 days				
432	BA14 for sheetpile and BD consent for ELS	28 days				
433	Excavation and construction of new Flood wall	90 days				
434	Realignment / install new UG utilities	30 days				
435	backfill and construct new carriageway	21 days				
436	Mis. Work for completion	9 days				
437	Section G (ix) - Bund wall modification works at South Seafront Road at Area F21	209 days				
438	Area Possession & Clearance	45 days				
439	Subletting / Fabrication / Delivery	90 days				
440	Temporary Traffic Arrangement approval	14 days				
441	ELS BD approval & consent	0 days				
442	Demolition of existing carriageway	14 days				
443	Removal of aboveground services	14 days				
444	Utilities scanning and expose existing UU	21 days				
445	Arrange of diversion existing UG utilities	30 days				
446	Excavation and expose existing bund wall & demolish	18 days				
447	Construction new bund wall for road junction	45 days				
448	Realignment / install new UG utilities	30 days				
449	backfill and construct new carriageway	18 days				
450	Mis. Work for completion	5 days				
451	Section G (x) - DAX Cable Diversion Works (from Part I to Part IV)	758 days				
452	Temporary Traffic Arrangement approval	14 days				
453	Subletting / Fabrication / Delivery	90 days				
454	Area Possession & Clearance	45 days				
455	Identification of existing cable trench	7 days				
456	Part 1 Re-excavation works incl. construction of joint bay	246 days				
457	Part 2 Re-excavation works incl. joint bay	120 days				
458	Part 3 Re-excavation works incl. joint bay	242 days				
459	Part 4 Re-excavation works incl. joint bay & new oil tank pits	92 days				
460	Backfill & Reinstatement Part 1	61 days				

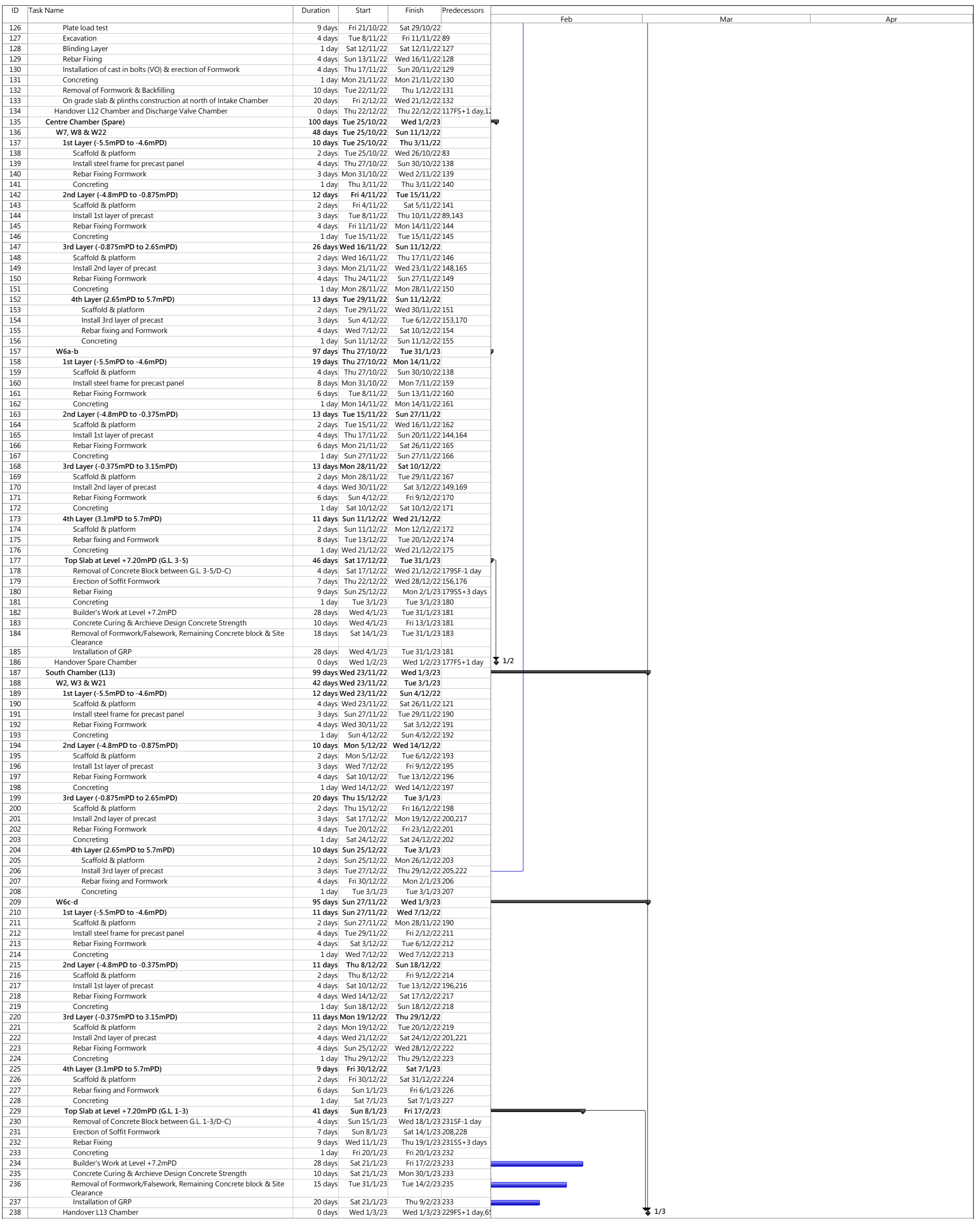
Contract No. 19/83002 Lamma Power Station Extension Civil and Building Works for Unit L12 **MASTER PROGRAMME**

ID	Task Name	Duration	Timeline			
			Feb	Mar	Apr	May
461	Backfill & Reinstatement Part 2	61 days				
462	Backfill & Reinstatement Part 3	61 days				
463	Section H - All remaining works shall be completed for reporting completion to BD and ready for OP inspection (PS1.4.4)	478 days				
464	Deferred works (MSB & HRSG) Listed in PS 1.4.4	281 days				
465	Construction of L12 MSB roof between GL12-G to 12-H and 12-2 to 12-6 after the overhead crane installation by the Employer's Specialist Contractors	38 days				
466	Construction of walls of L12 MSB below 1/F along GL 12-6 from GL12-B to 12-C and the associated staircases including the enclosure walls between G/F and 1/F. The Contractor shall allow access for the Employer's Specialist Contractors to use the hoisting we	92 days				
467	Provision in associated with hoisting well	21 days				
468	Construction of internal partition wall at 1/F of L12 MSB along GL 12-C from GL 12-2 to 12-3 AND North Façade at 1/F of L12 MSB along GL 12-1 from GL 12-B to 12-C	30 days				
469	Construction of metal fence and the associated Fire Services (F.S.) installations and installation of removable shelter at Transformer Area	92 days				
470	Deferred works (DAX1 and DAX2) Listed in PS 1.4.4	334 days				
471	Backfilling of whole DAX1 compartment inside existing joint bay "STJ12" and the new oil tank pit A located aside existing joint bay "STJ12".	59 days				
472	Re-excavation of whole DAX2 compartment inside existing joint bay "STJ12".	61 days				
473	Backfilling of whole DAX2 compartment inside existing joint bay "STJ12" and the new oil tank pit B located aside existing joint bay "STJ12".	61 days				
474	Deferred works (External Work) Listed in PS 1.4.4	121 days				
475	Final reinstatement of access roads and pavement surrounding and within L12 MSB and L12 HRSG area	62 days				
476	Installation of trench cover and road reinstatement of gas pipe and cable trenches within Area F5, F14, F16, F17 and F18.	90 days				
477	Backfilling and road-reinstatement of 275kV cable trenches	90 days				
478	All Remaining work ready for OP inspection	0 days				
479	STATUTORY SUBMISSION, INSPECTION & APPROVAL	865 days?				
480	WSD Statutory Submission, Inspection and Approval WWO Part I to III Submission / Approval	256 days				
481	WSD: Submit to WSD Form WWO 046 Part I to II - FOR ACB Building (for Ext Works at later stage)	0 days				
482	WSD: Vetting Form WWO 046 Part I and II Submission	90 days				
483	WSD: Issued of Form WWO 046 Part III by WSD - FOR ACB Building	0 days				
484	WSD: Prepare for 1st Amendment for Plumbing Plan	60 days				
485	WSD: Submit to WSD 1st Amendment for Plumbing Plan	0 days				
486	WSD: Vetting of Plumbing Plan by WSD	60 days				
487	WSD: 1st Approval for Plumbing Plan by WSD	0 days				
488	WSD: Prepare and Submit for Final Amendment for Plumbing Plan	45 days				
489	WSD: Vetting and Final Approval for Plumbing Plan by WSD	0 days				
490	WSD Statutory Submission, Inspection and Approval WWO Part IV to V Fire Services Water Submission / Approval	34 days?				
491	WSD: Form WWO 046 Part IV Submission (FS)	0 days				
492	WSD: WSD Received Form WWO046 Part IV and arrange for inspection (FS)	7 days				
493	WSD: WSD Inspection (FS)	7 days				
494	WSD: WWO 046 Part V Endorsement by WSD (FS)	12 days				
495	WSD: WSD Processing Water Supply Connection Certificate (FS)	7 days				
496	WSD: Issue by WSD Water Supply Connection Certificate (FS)	0 days?				
497	WSD Statutory Submission, Inspection and Approval WWO Part IV to V Potable / Flush Water Submission / Approval	60 days				
498	WSD: Form WWO 046 Part IV Submission (Fresh/Flush)	0 days				
499	WSD: WSD Acknowledge Form WWO 046	6 days				
500	WSD: WSD Inspection with Testing to lead (Fresh/Fluhs)	12 days				
501	WSD: Cleansing/Disinfecting Water Tanks / Piping System (Fresh/Flush)	6 days				
502	WSD: Collection of Sample for Testing at Accredited Lab (Fresh/Flush)	12 days				
503	WSD: Accredited Lab Testing Report of Sample to WSD	12 days				
504	WSD: Vetting of Test Report by WSD	6 days				
505	WSD: Issue of WWO 046 Part V (Fresh/Flush)	0 days				
506	WSD: WSD Processing WW01005 Water Certification (Fresh/Flush)	6 days				
507	WSD: Issue by WSD WWO 1005 Water Certification (Fresh/Flush)	0 days				
508	EMSD LIFT Statutory Submission, Inspection and Approval	45 days				
509	EMSD: Submission of Lift Form LE5 to EMSD	12 days				
510	EMSD: EMSD Makes arrangement for Lift Installation	5 days				
511	EMSD: EMSD Inspection to Lift Installation	14 days				
512	EMSD: Processing Lift Certificate (Form LE6)	14 days				
513	EMSD: Lift Issuance of Form 6 (Lift Certificate)	0 days				
514	HKE Transformer Final Inspection	120 days				
515	TX Room: Invite HKE For Transformer Room Inspection	7 days				
516	TX Room: Give Access to Transformer Room for HKE Contractor	0 days				
517	TX Room: Move-IN HKE Transformer Equipments	5 days				
518	TX Room: Install HKE Transformer, MEP Works & Testing	90 days				
519	TX Room: HKE Power Energization / Inspection	6 days				
520	TX Room: Metering Installation	12 days				
521	TX Room: HKE Power-ON Date	0 days				
522	DSD Drainage Completion Memo	65 days				
523	DSD: CCTV Survey Report on Completed Drainage	30 days				
524	DSD: Submitted CCTV Report & Form HPB1 of Completed Drainage to DSD For Technical Audit	7 days				
525	DSD: Completed Drainage System including TMC Inspection/Technical Audit by DSD	14 days				
526	DSD: Preparation of Drainage Connection Completion Memo by DSD	14 days				
527	DSD: Issue of Drainage Connection Completion Memo by DSD	0 days				
528	EPD Submission, Inspection and Approval	60 days				
529	EPD: License Application to EPD under APCO (Cap 311) for Generator Sets	0 days				
530	EPD: Vetting of Application by EPD under APCO (Cap 311) for Generator Sets	60 days				
531	EPD: Approval from EPD under APCO (Cap 311) for Generator Sets Installation	0 days				
532	FSD VAC Statutory Submission, Inspection and Approval	150 days				
533	Preparation of FSD VAC Drawings and Submission to HEC	60 days				
534	HEC: Review and Approval	30 days				
535	Preparation of VAC Drawings and Submission to FSD	30 days				
536	FSD: Review and Approval	30 days				
537	FSD Statutory Submission, Inspection and Approval	91 days				
538	Testing and Commissioning (Individual System - FSI Related)	45 days				
539	FSD: All Sections FS Ingration Test by NSC_BS	15 days				
540	FSD: Completion of FS Integration Test by NSC_BS for FS314/501	0 days				
541	FSD: Submit Form 213/314 & Form 501 Request for Inspection	0 days				
542	FSD: FSD Makes Arrangement for Inspection	7 days				
543	FSD: FSD Inspection	12 days				
544	FSD: Completion of FS Inspection	0 days				
545	FSD: FSD Processing FS Certificate Form 172	12 days				
546	FSD: Issue of Fire Services FS Certificate Form 172	0 days				
547	PRACTICAL COMPLETION	216 days				
548	BD Inspection	97 days				
549	BD: Application Form BA13 for OP Application	21 days				
550	BD: BD Inspection Date	15 days				
551	BD: Reinspection date with defects and rectification works	60 days				
552	BD: Obtain Occupation Permit (OP) from BD	1 day				
553	As-Built Drawings & Handover Documentation	120 days				
554	Prepare and Submit As-Built Drawings & Handover Documentation	45 days				
555	Review and Approval	45 days				
556	As-Built Drawings & Handover Documentation - Revision by MC	30 days				
557	Revised As-Built Drawings & Handover Documentation - Final Submission	0 days				
558	Completion of the Whole Contract Works	119 days				
559	1st Client Inspection for Review and Comments	30 days				
560	Defects and Rectification works	60 days				
561	2nd Client Inspection	14 days				
562	Minor Defects Rectification Works and Final Inspection	15 days				
563	PRACTICAL COMPLETION	0 days				

REVISED MASTER PROGRAMME
4 JAN 2021 Rev. 1-A



Task Split Milestone Summary



Project: 19-83014 - No. 5 Intake and Cable Br
 Date: 12 Aug 2022
 Rev: 8 - Programme for No. 5 C.W. Intake (D)

Task		Project Summary		Inactive Milestone		Manual Summary Rollup		Progress
Split		External Tasks		Inactive Summary		Manual Summary		Deadline
Milestone		External Milestone		Manual Task		Start-only		
Summary		Inactive Task		Duration-only		Finish-only		

Page 2

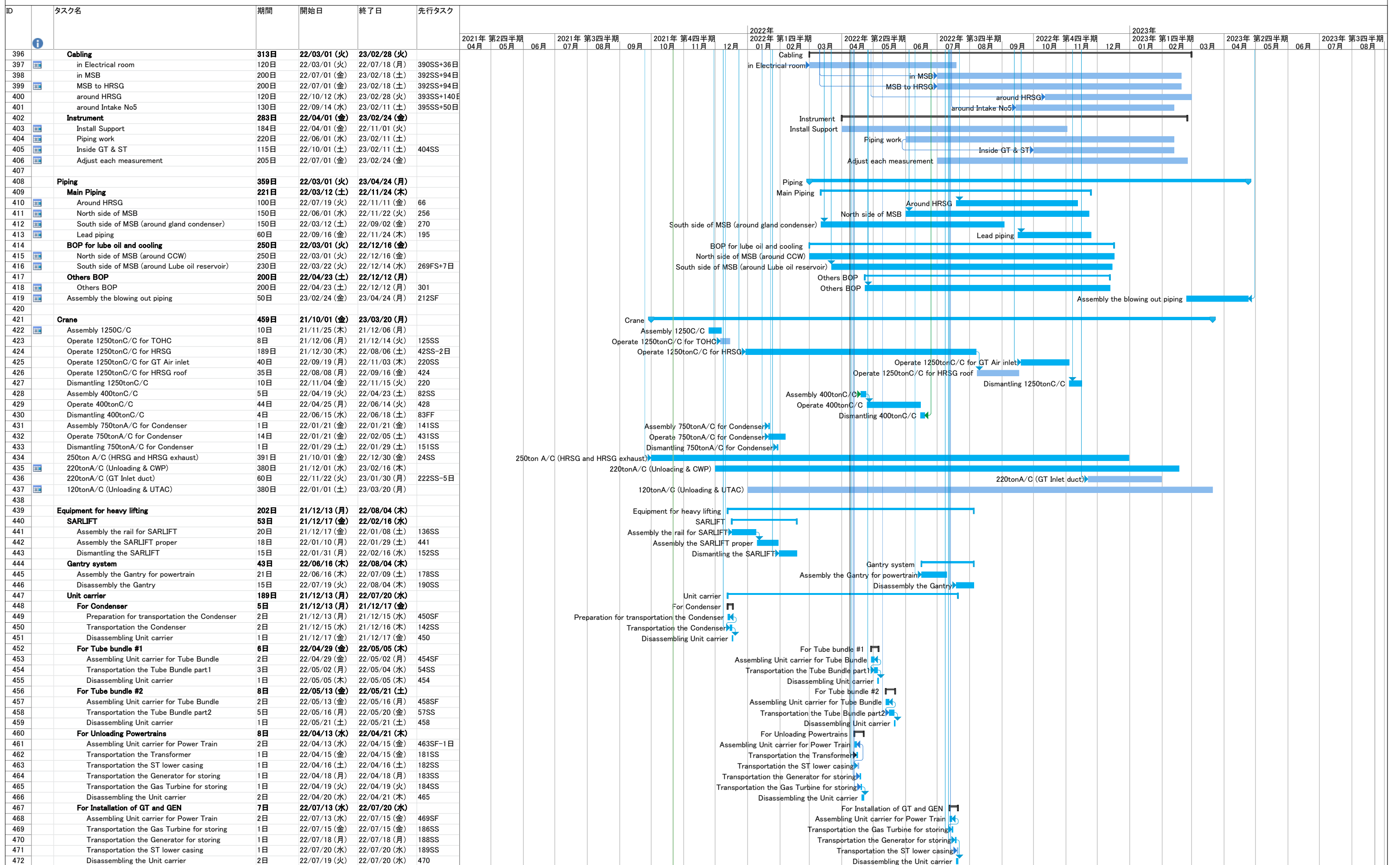
TAIHEI DENGYO KAISHA,LTD.						Construction Schedule of Unit-12																								20th-Oct-2021 Rev.5a		
ID	タスク名	期間	開始日	終了日	先行タスク	2021年 第2四半期		2021年 第3四半期			2021年 第4四半期			2022年 第1四半期			2022年 第2四半期			2022年 第3四半期			2022年 第4四半期			2023年 第1四半期			2023年 第2四半期		2023年 第3四半期	
						04月	05月	06月	07月	08月	09月	10月	11月	12月	01月	02月	03月	04月	05月	06月	07月	08月	09月	10月	11月	12月	01月	02月	03月	04月	05月	06月
1	Key Date	527日	21/10/01 (金)	23/06/07 (水)		Key Date																										
2	H/O HRSG Foundation	1日	21/10/01 (金)	21/10/01 (金)		H/O HRSG Foundation																										
3	H/O OHC Installation	1日	21/11/01 (月)	21/11/01 (月)		H/O OHC Installation																										
4	H/O Condenser foundation	1日	21/12/15 (水)	21/12/15 (水)		H/O Condenser foundation																										
5	H/O Aux. equipment foundation of HRSG north side	1日	21/11/15 (月)	21/11/15 (月)		H/O Aux. equipment foundation of HRSG north side																										
6	H/O GT Exhaust duct foundation (Assumed)	1日	22/02/01 (火)	22/02/01 (火)		H/O GT Exhaust duct foundation (Assumed)																										
7	H/O MSB East side (Assumed)	1日	22/02/01 (火)	22/02/01 (火)		H/O MSB East side (Assumed)																										
8	MSB Full access (Except P/T foundation)	1日	22/01/15 (土)	22/01/15 (土)		MSB Full access (Except P/T foundation)																										
9	H/O Foundation around CCW-Cooler	1日	22/01/15 (土)	22/01/15 (土)		H/O Foundation around CCW-Cooler																										
10	H/O Foundation around Transformer	1日	22/03/10 (木)	22/03/10 (木)		H/O Foundation around Transformer																										
11	H/O Foundation of Powertrain	1日	22/04/15 (金)	22/04/15 (金)		H/O Foundation of Powertrain																										
12	Delivery date of Powertrains (GT,GEN,ST,GEN Tx)	5日	22/04/15 (金)	22/04/20 (水)		Delivery date of Powertrains (GT,GEN,ST,GEN Tx)																										
13	O/B GT & GEN	1日	22/07/15 (金)	22/07/15 (金)		O/B GT & GEN																										
14	Power Receiving	1日	22/11/15 (火)	22/11/15 (火)		Power Receiving																										
15	H/O Foundation of No5 Intake area	1日	22/09/30 (金)	22/09/30 (金)		H/O Foundation of No5 Intake area																										
16	Hydrostatic test	10日	22/12/03 (土)	22/12/14 (水)		Hydrostatic test																										
17	Beginning Closed cooling water system flushing (Target)	1日	22/12/14 (水)	22/12/14 (水)	18SS-30日	Beginning Closed cooling water system flushing (Target)																										
18	Receiving Lube Oil	1日	23/01/18 (水)	23/01/18 (水)	20SS	Receiving Lube Oil																										
19	Beginning CW system commissioning	1日	23/02/10 (金)	23/02/10 (金)	18SS+20日	Beginning CW system commissioning																										
20	GT First Firing	1日	23/05/08 (月)	23/05/08 (月)	213	GT First Firing																										
21	Synchronization	1日	23/06/07 (水)	23/06/07 (水)	20FS+25日	Synchronization																										
22																																
23	HRSG	577日	21/10/01 (金)	23/08/04 (金)		HRSG																										
24	Make the condition for construction	2日	21/10/01 (金)	21/10/02 (土)	2SS	Make the condition for construction																										
25	Center line marking	3日	21/10/01 (金)	21/10/04 (月)	24SS	Center line marking																										
26	Chipping	15日	21/10/01 (金)	21/10/18 (月)	24SS	Chipping																										
27	Packer setting	10日	21/10/05 (火)	21/10/15 (金)	26SS+3日	Packer setting																										
28	Lay down Pipes under HRSG	10日	21/10/09 (土)	21/10/20 (水)	27SS+4日	Lay down Pipes under HRSG																										
29	Short legs setting	9日	21/10/21 (木)	21/10/30 (土)	28	Short legs setting																										
30	Prepare for installing Bottom casing	3日	21/10/28 (木)	21/11/01 (月)	31SF	Prepare for installing Bottom casing																										
31	Lifting and installing Bottom casing	6日	21/11/01 (月)	21/11/06 (土)	29	Lifting and installing Bottom casing																										
32	Welding Short legs and Bottom casing	35日	21/11/08 (月)	21/12/17 (金)	31	Welding Short legs and Bottom casing																										
33	Setting and welding Brace gusset	35日	21/11/08 (月)	21/12/17 (金)	31	Setting and welding Brace gusset																										
34	Setting and welding SCR bottom frame	35日	21/11/08 (月)	21/12/17 (金)	31	Setting and welding SCR bottom frame																										
35	Setting FL+2.5m floor structure	17日	21/11/08 (月)	21/11/26 (金)	31	Setting FL+2.5m floor structure																										
36	Putting pipes on bottom casing	10日	21/11/27 (土)	21/12/08 (水)	35	Putting pipes on bottom casing																										
37	HRSG Blow down tank	2日	21/10/27 (水)	21/10/29 (金)	38SF-10日	HRSG Blow down tank																										
38	KURE pipe rack (North on HRSG)	40日	21/11/10 (水)	21/12/25 (土)	31FS+2日	KURE pipe rack (North on HRSG)																										
39	Insulation and lagging on Bottom casing	17日	21/11/25 (木)	21/12/14 (火)	32SS+15日	Insulation and lagging on Bottom casing																										
40	Unloading Side casing and Top Casing #1	2日	21/12/09 (木)	21/12/10 (金)	79FS+2日	Unloading Side casing and Top Casing #1																										
41	Suspend lifting work because of delivery condenser	4日	21/12/14 (火)	21/12/17 (金)	142SS-1日	Suspend lifting work because of delivery condenser																										
42	Lifting and installing Side casing	42日	22/01/01 (土)	22/02/18 (金)	94SS+20日	Lifting and installing Side casing																										
43	Lifting and installing Top casing	40日	22/01/19 (水)	22/03/05 (土)	42SS+15日	Lifting and installing Top casing																										
44	Lifting and installing SCR	2日	22/02/03 (木)	22/02/04 (金)	99	Lifting and installing SCR																										
45	Lifting and installing AIG	2日	22/03/14 (月)	22/03/15 (火)	101FS+10日	Lifting and installing AIG																										
46	Unloading Side casing and Top Casing #2	1日	22/01/07 (金)	22/01/07 (金)	96SS-1日	Unloading Side casing and Top Casing #2																										
47	Installation of piping, header, support, EXP inside HRSG	40日	22/01/25 (火)	22/03/11 (金)	42SS+20日	Installation of piping, header, support, EXP inside HRSG																										
48	Lifting and installing HRSG Inlet duct	2日	22/04/26 (火)	22/04/27 (水)	103	Lifting and installing HRSG Inlet duct																										
49	Setting FL+29m floor structure (The part of over hang)	55日	22/03/07 (月)	22/05/09 (月)	48FF+10日	Setting FL+29m floor structure (The part of over hang)																										
50	Lifting Down comer piping (after pre-assembling)	8日	22/04/11 (月)	22/04/19 (火)	49SS+30日	Lifting Down comer piping (after pre-assembling)																										
51	Prepare Lifting Tube bundle (Around HRSG)	10日	22/04/28 (木)	22/05/09 (月)	49FS-10日	Prepare Lifting Tube bundle (Around HRSG)																										
52	Suspend outside work for transportation of GEN TX	2日	22/04/15 (金)	22/04/16 (土)	12SS	Suspend outside work for transportation of GEN TX																										
53	Prepare unloading Tube bundle (Storage area)	3日	22/04/28 (木)	22/04/30 (土)	48	Prepare unloading Tube bundle (Storage area)																										
54	Unloading Tube bundle #1 (3set)	3日	22/05/02 (月)	22/05/04 (水)	53	Unloading Tube bundle #1 (3set)																										
55	Prepare installing Tube bundle #1 (3set)	3日	22/05/05 (木)	22/05/07 (土)	54	Prepare installing Tube bundle #1 (3set)																										
56	Lifting and installing Tube bundle #1 (3set)	5日	22/05/10 (火)	22/05/14 (土)	55,51	Lifting and installing Tube bundle #1 (3set)																										
57	Unloading Tube bundle #2 (12set)	5日	22/05/16 (月)	22/05/20 (金)	56	Unloading Tube bundle #2 (12set)																										
58	Prepare installing Tube bundle #2 (12set)	3日	22/05/21 (土)	22/05/24 (火)	57	Prepare installing Tube bundle #2 (12set)																										
59	Lifting and installing Tube bundle #2 (12set)	15日	22/05/25 (水)	22/06/10 (金)	58	Lifting and installing Tube bundle #2 (12set)																										
60	Setting FL+29m floor structure (Above tube bundle)	30日	22/05/21 (土)	22/06/28 (火)	56SS+10日	Setting FL+29m floor structure (Above tube bundle)																										
61	Lifting and setting HP-Drum	1日	22/06/02 (木)	22/06/02 (木)	60SS+10日	Lifting and setting HP-Drum																										
62	Lifting and setting IP-Drum	1日	22/06/23 (木)	22/06/23 (木)	59FS+10日	Lifting and setting IP-Drum																										
63	Lifting and setting LP-Drum	1日	22/07/06 (水)	22/07/06 (水)	62FS+10日	Lifting and setting LP-Drum																										
64	Lifting and installing HRSG Outlet duct	2日	22/08/05 (金)	22/08/06 (土)	105	Lifting and installing HRSG Outlet duct																										
65	Suspend outside work for transportation of GT & GEN	8日	22/07/13 (水)	22/07/21 (木)	186SS-2日	Suspend outside work for transportation of GT & GEN																										
66	Adjusting HDR level (HP)	10日	22/07/07 (木)	22/07/18 (月)	63	Adjusting HDR level (HP)																										
67	Adjusting HDR level (IP & LP)	15日	22/07/19 (火)	22/08/04 (木)	66	Adjusting HDR level (IP & LP)																										
68	Lifting Frame 7,9 and 8	25日	22/08/19 (金)	22/09/16 (金)	69	Lifting Frame 7,9 and 8																										
69	HRSG roof structure (main beam)	10日	22/08/08 (月)	22/08/18 (木)	64	HRSG roof structure (main beam)																										
70	Setting roof structure (Including deferrable structure)	100日	22/08/08 (月)	22/12/01 (木)	69SS	Setting roof structure (Including deferrable structure)																										
71	Lifting and setting the silencer of HRSG	5日	22/08/31 (水)	22/09/05 (月)	70SS+20日	Lifting and setting the silencer of HRSG																										
72	1250ton shift to lifting work of GT Inlet duct	40日	22/09/17 (土)	22/11/02 (水)	220SS	1250ton shift to lifting work of GT Inlet duct																										
73	Assembly accessory inside HRSG	100日	22/11/28 (木)	23/03/23 (木)	87	Assembly accessory inside HRSG																										
74	Hydrostatic test of HRSG	10日	22/12/03 (土)	22/12/14 (水)	16SS	Hydrostatic test of HRSG																										
75	Excavation the foundation of UTAC (By Civil)	30日	22/10/27 (木)	22/12/01 (木)	76SF	Excavation the foundation of UTAC (By Civil)																										
76	Urea to Ammonia conversion system	90日	22/12/01 (木)	23/03/15 (水)		Urea to Ammonia conversion system																										
77	Installation the SCR catalyst	20日	23/07/13 (木)	23/08/04 (金)	21FS+30日	Installation the SCR catalyst																										
78																																
79	Assembly 1250ton C/C	10日	21/11/25 (木)	21/12/06 (月)		Assembly 1250ton C/C																										

NOTE
 1. The key date is subjected in the KOM held on 30th-Sep.
 2. The east area on the MSB is assumed to be handedover before B-Feb-2022 according to the above key date changed.
 3.Considered the affection of KURE's schedule belows;
 i) Because of delaying the side casing,installation Inlet duct is postponed.
 ii) Because of delivery 12 TBs in one time, no enough area for pre-ass'y Outlet duct and GT Inlet duct on schedule.

TAIHEI DENGYO KAISHA,LTD.

Construction Schedule of Unit-12

20th-Oct-2021
Rev.5a



NOTE

1. The key date is subjected in the KOM held on 30th-Sep.

2. The east area on the MSB is assumed to be handedover before B-Feb-2022 according to the above key date changed.

3. Considered the affection of KURE's schedule belows;

i) Because of delaying the side casing, installation Inlet duct is postponed.

ii) Because of delivery 12 TBs in one time, no enough area for pre-ass'y Outlet duct and GT Inlet duct on schedule.