

香港電燈有限公司  
The Hongkong Electric Co., Ltd.



**Lamma Power Station Extension  
Construction Phase  
Monthly Environmental Monitoring & Audit Report**

**March 2026**

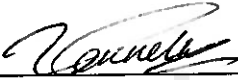

香港電燈有限公司  
The Hongkong Electric Co., Ltd.



**ENVIRONMENTAL IMPACT ASSESSMENT (EIA) ORDINANCE, CAP. 499**

**ENVIRONMENTAL PERMIT NO. EP-071/2000/D**

**LAMMA POWER STATION EXTENSION  
ENVIRONMENTAL MONITORING & AUDIT PROGRAMME  
AT CONSTRUCTION PHASE**

Report Title	Lamma Power Station Extension – Unit L13 Monthly EM&A Report (March 2026)
Date	13 April 2026
Certified by	 <i>for</i> (Mr. CHAN Hon Yeung, Environmental Team Leader)
Verified by	 Mr. Y. W. Fung (AECOM Asia Company Limited, Independent Environmental Checker)

**TABLE OF CONTENT**

**EXECUTIVE SUMMARY**

- 1. INTRODUCTION ..... 1**
  - 1.1 Background 1
  - 1.2 Project Organisation 1
  - 1.3 Construction Works undertaken during the Reporting Month 1
  - 1.4 Summary of EM&A Requirements 2
- 2. AIR QUALITY ..... 5**
  - 2.1 Monitoring Requirements 5
  - 2.2 Monitoring Locations 5
  - 2.3 Monitoring Equipment 5
  - 2.4 Monitoring Parameters, Frequency and Duration 5
  - 2.5 Monitoring Procedures and Calibration Details 6
  - 2.6 Results and Observations 7
- 3. NOISE..... 9**
  - 3.1 Monitoring Requirements 9
  - 3.2 Monitoring Locations 9
  - 3.3 Monitoring Equipment 9
  - 3.4 Monitoring Parameters, Frequency and Duration 9
  - 3.5 Monitoring Procedures and Calibration Details 10
  - 3.6 Results and Observations 10
- 4. ENVIRONMENTAL AUDIT ..... 12**
  - 4.1 Review of Environmental Monitoring Procedures 12
  - 4.2 Assessment of Environmental Monitoring Results 12
  - 4.3 Waste Management 12
  - 4.4 Site Environmental Audit 13
  - 4.5 Status of Environmental Licensing and Permitting 13
  - 4.6 Implementation Status of Environmental Mitigation Measures 13
  - 4.7 Implementation Status of Event/Action Plans 15
  - 4.8 Implementation Status of Environmental Complaint Handling Procedures 15
- 5. FUTURE KEY ISSUES ..... 16**
  - 5.1 Key Issues for the Coming Month 16
  - 5.2 Monitoring Schedules for the Next 3 Months 16
  - 5.3 Construction Program for the Next 3 Months 16
- 6. CONCLUSION ..... 17**

## **LIST OF TABLES**

Table 1.1	Construction Activities and Their Corresponding Environmental Mitigation Measures
Table 2.1	Air Quality Monitoring Locations
Table 2.2	Air Quality Monitoring Equipment
Table 2.3	Air Quality Monitoring Parameter, Duration and Frequency
Table 3.1	Noise Monitoring Equipment
Table 3.2	Noise Monitoring Duration and Parameter
Table 4.1	Summary of AL Level Exceedances on Monitoring Parameters
Table 4.2	Estimated Amounts of Waste in March 2026
Table 4.3	Summary of Environmental Licensing and Permit Status
Table 4.4	Environmental Complaints Received in March 2026
Table 4.5	Outstanding Environmental Complaints Carried Over

## **LIST OF FIGURES**

Figure 1.1	Layout of Work Site
Figure 2.1	Location of Air Quality Monitoring Stations
Figure 3.1	Location of Noise Monitoring Stations

## **APPENDICES**

Appendix A	Organization Chart
Appendix B	Action and Limit Levels for Air Quality and Noise
Appendix C	Environmental Monitoring Schedule
Appendix D	Air Quality Monitoring Results for March 2026
Appendix E	Noise Monitoring Results for March 2026
Appendix F	The QA/QC Procedures and Results
Appendix G	Event/Action Plans
Appendix H	Site Audit Summary
Appendix I	Summary of EMIS
Appendix J	Tentative Construction Programme
Appendix K	Monthly Waste Flow Table for March 2026

## EXECUTIVE SUMMARY

This is the 191<sup>st</sup> monthly Environmental Monitoring and Audit (EM&A) report for the Project “Construction of Lamma Power Station Extension” prepared by the Environmental Team (ET). This report presents the results of impact monitoring on air quality and noise for the said project in March 2026.

The reclamation and submarine pipeline works were completed with the first gas-fired combined cycle unit (viz. Unit L9) commissioned in October 2006, working currently on base load operation. To cope with the scheduled retirement of the existing units at Lamma Power Station, the second gas-fired combined cycle unit (viz. Unit L10) L10 was commissioned for reliable operation in February 2020.

In September 2016, the Government approved HK Electric to construct the third combined cycle gas-fired generating unit (Unit L11) to implement the 2020 Fuel Mix Target. L11 was commissioned for reliable operation effective in May 2022.

With the Government’s approval to build the fourth combined cycle gas-fired generating unit (L12) in July 2018, the associated construction work commenced in April 2019. L12 was commissioned for reliable operation effective on 31/3/2024. The operational EM&A work for L9, L10, L11 and L12 is recorded in the separate monthly EM&A report for the Project “Operation of Lamma Power Station Extension”.

With the Government’s approval to build the fifth combined cycle gas-fired generating unit (L13) in November 2023, the associated construction work commenced in end January 2024.

Air and noise monitoring were performed. The results were checked against the established Action/Limit (AL) levels. An on-site audit was conducted once per week. The implementation status of the environmental mitigation measures, Event/Action Plan and environmental complaint handling procedures were also checked.

### Construction Activities Undertaken

Construction activities for Lamma Extension during the reporting month are tabulated as follows:

Item	Construction Activities
Unit L13 Civil and Building Works	Civil advance work

### Environmental Monitoring Works

All monitoring work at designated stations was performed as scheduled satisfactorily.

#### *Air Quality*

No exceedance of Action/Limit levels on 1-hour TSP and 24-hour TSP for air quality was recorded in the month.

#### *Noise*

No exceedance of Action and Limit levels for noise arising from the construction of Lamma Extension was recorded in the month.

## Site Environmental Audit

EPD officials from Regional Office (South) visited Lamma Power Station on 27/3/2026. There was no adverse comment from EPD regarding the construction site.

Site audits were carried out on a weekly basis to monitor environmental issues on the construction site. The site conditions were generally satisfactory.

## Environmental Licensing and Permitting

Description	Permit No.	Valid Period		Issued To	Date of Issuance
		From	To		
Varied Environmental Permit	EP-071/2000/D	28/09/20	-	HK Electric	28/09/20
Construction Noise Permit	GW-RS0081-26	23/02/26	22/08/26	Contractor	30/01/26
WPCO Discharge Licence	WT100046647-2025	18/07/25	31/07/30	Contractor	18/07/25
Waste Disposal Billing Account	Account No.: 7054247	03/04/25	-	Contractor	03/04/25

## Implementation Status of Environmental Mitigation Measures

Environmental mitigation measures for the construction activities as recommended in the EM&A manual were implemented in the reporting month.

## Environmental Complaints

No complaint in relation to the environmental impact of the construction activities was received in the reporting month.

## Future Key Issues

The future key issues to be considered in the coming month are as follows:

### Unit L13 Civil and Building Works

- to continue monitoring the noise level during construction and to ensure compliance with the CNP's already obtained;
- to monitor and review the sufficiency of the dust suppression measures provided and increase the resources accordingly if necessary;
- to treat wastewater in sedimentation tank for re-use on construction activities and to ensure compliance with the WPCO discharge licence already obtained.

## Concluding Remarks

The environmental performance of the project was generally satisfactory.

## 1. INTRODUCTION

### 1.1 Background

The Environmental Team (hereinafter called the “ET”) was formed within the Hongkong Electric Co. Ltd (HEC) to undertake Environmental Monitoring and Audit for “Construction of Lamma Power Station Extension” (hereinafter called the “Project”). Under the requirements of Section 6 of Environmental Permit EP-071/2000/D, an EM&A programme for impact environmental monitoring set out in the EM&A Manual (Construction Phase) is required to be implemented. In accordance with the EM&A Manual, environmental monitoring of air quality, noise and water quality and regular environmental audits are required for the Project. With the completion of reclamation and submarine pipeline works, no further marine water quality monitoring would be required.

The Project involves the construction of a gas-fired power station employing combined cycled gas turbine technology, forming an extension to the existing Lamma Power Station. The key elements of the Project including the construction activities associated with the transmission system and submarine gas pipeline are outlined as follows:

- dredging and reclamation to form approximately 22 hectares of usable area;
- construction of six 300MW class gas-fired combined cycle units;
- construction of a gas receiving station;
- construction of a transmission system linking the Lamma Extension to load centres on Hong Kong Island;
- laying of a gas pipeline for the supply of natural gas to the new power station.

This report summarizes the environmental monitoring and audit work for the Project for the month of March 2026.

### 1.2 Project Organisation

An Environmental Management Committee (EMC) has been set up in HEC to oversee the Project. The management structure includes the following:

- Environmental Protection Department (The Authority);
- Environmental Manager (The Chairman of the Environmental Management Committee);
- Engineer;
- Independent Environmental Checker (IEC);
- Environmental Team (ET);
- Contractor.

The project organisation chart for the construction EM&A programme is shown in [Appendix A](#).

### 1.3 Construction Works undertaken during the Reporting Month

Construction activities for Unit L13 civil and building works were civil advance work. Layout plan for construction site is shown in [Figure 1.1](#).

The main construction activities carried out during the reporting month and the corresponding environmental mitigation measures are summarized in [Table 1.1](#). The implementation of major mitigation measures in the month is provided in [Appendix I](#).

Table 1.1 Construction Activities and Their Corresponding Environmental Mitigation Measures

Item	Construction Activities	Environmental Mitigation Measures
Unit L13 Civil and Building Works		
1	Civil Advance Work	<p>Wastewater</p> <ul style="list-style-type: none"> <li>– All wastewater will be pumped to the sedimentation ponds for desilting process. After that, wastewater will be re-used for construction activities or pumped for storage.</li> <li>– Water sampling and analyzing is carried out bimonthly.</li> <li>– All wastewater will be treated before discharge to fulfill the requirement of wastewater discharge licence.</li> </ul> <p>Noise</p> <ul style="list-style-type: none"> <li>– General noise mitigation measure employed at all work sites throughout the construction phase.</li> <li>– Following all requirements of Construction Noise Permit issued by EPD.</li> <li>– Generators operate with door closed.</li> </ul> <p>Waste Management</p> <ul style="list-style-type: none"> <li>– Waste Management Plan submitted and implemented.</li> <li>– Construction will be store in the proposed storage area for recycled or disposal.</li> <li>– Collection of recycle waste (waste metal, plastic and paper).</li> <li>– The inert and non-inert waste was separated for proper storage in designated areas.</li> </ul> <p>Air</p> <ul style="list-style-type: none"> <li>– Dust suppression in the main haul road.</li> <li>– Using ULSD for PMEs.</li> <li>– Cover dusty stockpile with tarpaulin and water spraying.</li> <li>– Wheel-washing was installed in site entrance.</li> <li>– Well maintain and check the PMEs.</li> <li>– Watering during dust generated works</li> </ul>

#### 1.4 Summary of EM&A Requirements

The detailed EM&A monitoring work for air quality and noise are described in Sections 2 and 3 respectively. Regular environmental site audits for air quality, noise, water quality and waste management were carried out.

The following environmental audits are summarized in Section 4 of this report:

- Environmental monitoring results;
- Waste Management Records;
- Weekly site audit results;
- The status of environmental licensing and permits for the Project;
- The implementation status of environmental protection and pollution control/ mitigation measures.

Future key issues will be reported in Section 5 of this report.

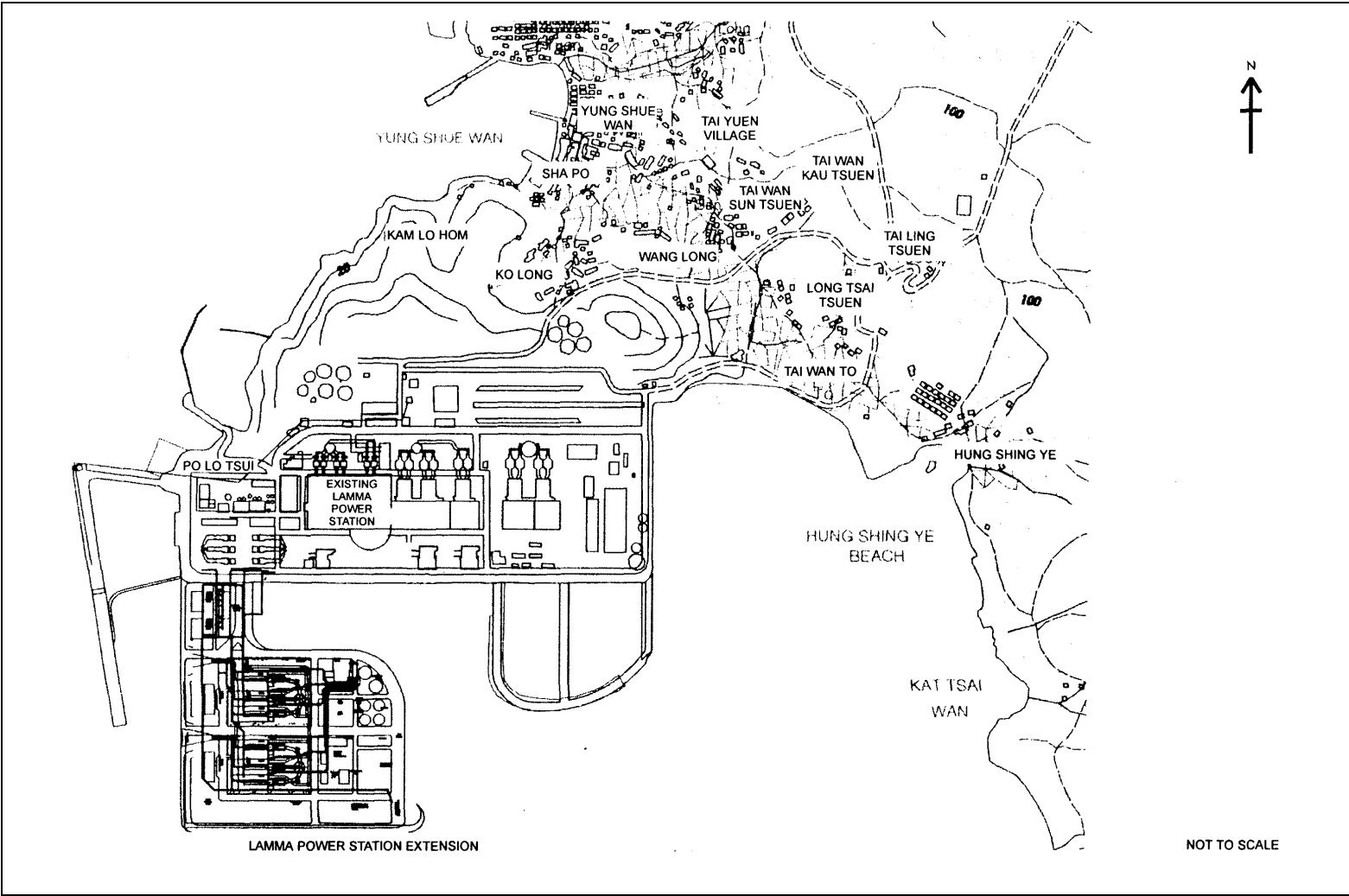


Figure 1.1 Layout of Work Site

## 2. AIR QUALITY

### 2.1 Monitoring Requirements

1-hour and 24-hour TSP monitoring at agreed frequencies were conducted to monitor air quality. The impact monitoring data were checked against the Action/Limit Levels as determined in the Baseline Monitoring Report (Construction Phase). [Appendix B](#) shows the established Action/Limit Levels for Air Quality.

### 2.2 Monitoring Locations

Three dust monitoring locations were selected for 1-hour TSP sampling (AM1, AM2 & AM3) while four monitoring locations were selected for 24-hour TSP sampling (AM1, AM2, AM3 and AM4). [Table 2.1](#) tabulates the monitoring stations. The locations of the monitoring stations are shown in [Figure 2.1](#).

Table 2.1 Air Quality Monitoring Locations

Location I.D.	Description
AM1	Reservoir
AM2	East Gate
AM3	Ash Lagoon
AM4	Tai Yuen Village

### 2.3 Monitoring Equipment

It is agreed with EPD that continuous 24-hour TSP air quality monitoring would be performed using TEOM continuous dust monitor and the MINIVOL Portable Sampler at AM1,2&3 and AM4 respectively. TEOM continuous dust monitors were used to carry out 1-hour TSP monitoring at AM1, AM2 and AM3. [Table 2.2](#) summarises the equipment used in dust monitoring.

Table 2.2 Air Quality Monitoring Equipment

Equipment	Model and Make
<i>24-hour sampling:</i>	
Continuous TSP Dust Meter	TEOM continuous dust monitor Thermo Scientific
MINIVOL Portable Sampler	AIRMETRICS
<i>1-hour sampling:</i>	
Continuous TSP Dust Meter	TEOM continuous dust monitor Thermo Scientific

### 2.4 Monitoring Parameters, Frequency and Duration

[Table 2.3](#) summarises the monitoring parameters, duration and frequency of air quality monitoring. The monitoring schedule for the reporting month is shown in [Appendix C](#).

Table 2.3 Air Quality Monitoring Parameter, Duration and Frequency

Monitoring Stations	Parameter	Duration	Frequency
AM1	1-hour TSP	1	3 hourly samples every 6 days
	24-hour TSP	24	Once every 6 days
AM2	1-hour TSP	1	3 hourly samples every 6 days
	24-hour TSP	24	Once every 6 days
AM3	1-hour TSP	1	3 hourly samples every 6 days
	24-hour TSP	24	Once every 6 days
AM4	24-hour TSP	24	Once every 6 days

## 2.5 Monitoring Procedures and Calibration Details

MINIVOL (24- hour TSP Monitoring):

### *Preparation of Filter Papers*

- Visual inspection of filter papers was carried out to ensure that there were no pinholes, tears and creases;
- The filter papers were then labeled before sampling.
- The filter papers were equilibrated at room temperature and relative humidity < 50% for at least 24 hours before weighing.

### *Field Monitoring*

- During collection of the sampled filter paper, the information on the elapse timer was logged. Site observations around the monitoring stations, which might have affected the monitoring results, were also recorded. Major pollution sources, if any, would be identified and reported.
- The post-sampling filter papers were removed carefully from the filter holder and folded to avoid loss of fibres or dust particles from the filter papers;
- The filter holder and its surrounding were cleaned;
- A pre-weighed blank filter paper for the next sampling was put in place and aligned carefully. The filter holder was then tightened firmly to avoid leakage;
- The programmable timer was set for the next 24 hrs sampling period;
- The post-sampling filter papers were equilibrated at room temperature and relative humidity < 50% for at least 24 hours before weighing.

TEOM continuous dust monitor (24- hour TSP and 1- hour TSP Monitoring):

- The following parameters of the TEOM model dust meters are regularly checked to ensure proper functionality:
  - Operation Mode;
  - Frequency of the tapered element;
  - Main flow;
  - Bypass flow.

### *Maintenance & Calibration*

- The monitoring equipment and their accessories are maintained in good working conditions.

- Monitoring equipment is calibrated at monthly intervals. Calibration details are shown in [Appendix F](#).

## 2.6 Results and Observations

All dust monitoring works were conducted on schedule. All monitoring data and graphical presentation of the monitoring results are provided in [Appendix D](#). Key findings and observations are provided below:

### *1-hour TSP*

No exceedance of 1-hour TSP Action/Limit Level was recorded in the month.

### *24-hour TSP*

No exceedance of 24-hour TSP Action/Limit Level was recorded in the month.

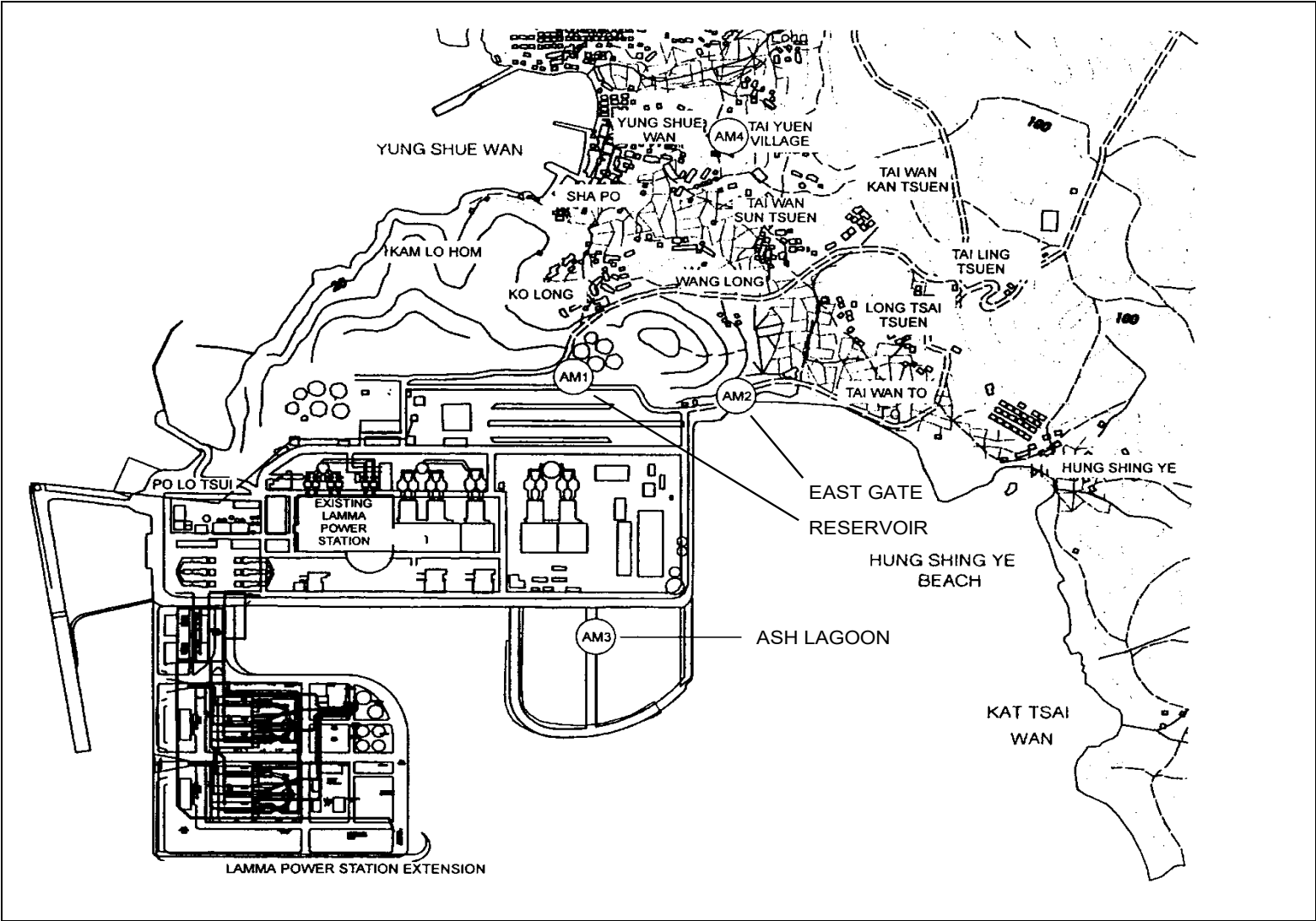


Figure 2.1 Location of Air Quality Monitoring Stations

### 3. NOISE

#### 3.1 Monitoring Requirements

Continuous noise alarm monitoring at Ash Lagoon/Ching Lam were carried out to calculate the noise contributed by the construction activities at the two critical NSR's, viz. Long Tsai Tsuen/Hung Shing Ye and the school within the village of Tai Wan San Tsuen. The impact monitoring data for construction noise were checked against the limit levels specified in the EM&A Manual. With the availability of the construction noise permits, impact monitoring for the construction work during the restricted hours was also carried out. Section 3 presents the details of the construction noise permits.

The impact noise monitoring data were checked against the limit levels specified in the EM&A Manual. [Appendix B](#) shows the established Action/Limit Levels for noise.

#### 3.2 Monitoring Locations

In accordance with the EM&A manual, the identified noise monitoring locations of Ash Lagoon and Ching Lam are shown in [Figure 3.1](#).

#### 3.3 Monitoring Equipment

The sound level meters used for noise monitoring complied with International Electrotechnical Commission Publications 651:1979 (Type 1) and 804:1985 (Type 1). The noise monitoring equipment used is shown in [Table 3.1](#).

Table 3.1 Noise Monitoring Equipment

Equipment	Model
Sound level meters	B&K 2250
Sound level calibrator	B&K 4231

#### 3.4 Monitoring Parameters, Frequency and Duration

Continuous alarm monitoring was carried out at Ash Lagoon and Ching Lam. The measurement duration and parameter of noise monitoring were presented in [Table 3.2](#) as follows:

Table 3.2 Noise Monitoring Duration and Parameter

Location	Time Period	Frequency	Parameter
Ash Lagoon	Day-time: 0700-1900 hrs on normal weekdays	Day-time: 30 minutes	30-min $L_{Aeq}$
	Evening-time & holidays: 0700-2300 hrs on holidays; and 1900-2300 hrs on all other days	Evening-time & holidays: 5 minutes	5-min $L_{Aeq}$
Ching Lam	Night-time: 2300-0700 hrs of next day	Night-time: 5 minutes	5-min $L_{Aeq}$

### 3.5 Monitoring Procedures and Calibration Details

#### *Monitoring Procedures*

##### *Continuous Noise Monitoring for Lamma Extension Construction*

The measured noise levels (MNL's) were collected at the noise alarm monitoring stations at Ash Lagoon and Ching Lam. The notional background noise levels (viz. baseline noise data at Ash Lagoon and Ching Lam) were applied to correct the corresponding MNL's in 30-min/5-min  $L_{Aeq}$ .

A wind speed sensor was installed at Station Building Rooftop. The wind speed signal was used to determine whether the data from Ash Lagoon and Ching Lam noise alarm monitoring stations were affected. The instantaneous data was discarded in case the instantaneous wind speed exceeded 10 m/s. The 30-min/5-min  $L_{Aeq}$  was considered valid only if the amount of valid data was equal to or above 70%.

#### *Equipment Calibration*

The sound level meters and calibrators were verified by the manufacturer or accredited laboratory. With the endorsement of the Independent Environmental Checker, the enhancement of calibration of sound level meter at the noise monitoring stations was implemented. The monthly manual on-site calibration using sound level calibrator was replaced by the daily auto charge injection calibration function of the sound level meter. For additional quality assurance, manual on-site calibration would still be conducted for the noise monitoring stations once every 6 months. The manual on-site calibrations for Ash Lagoon and Ching Lam noise monitoring stations were carried out in February 2026. The next calibrations for the two corresponding noise monitoring stations were scheduled in August 2026.

### 3.6 Results and Observations

Continuous noise monitoring was conducted at the two monitoring stations at Ash Lagoon and Ching Lam.

All monitoring results and their graphical presentations are provided in [Appendix E](#). No exceedance of noise Action/Limit Level was recorded in the month.

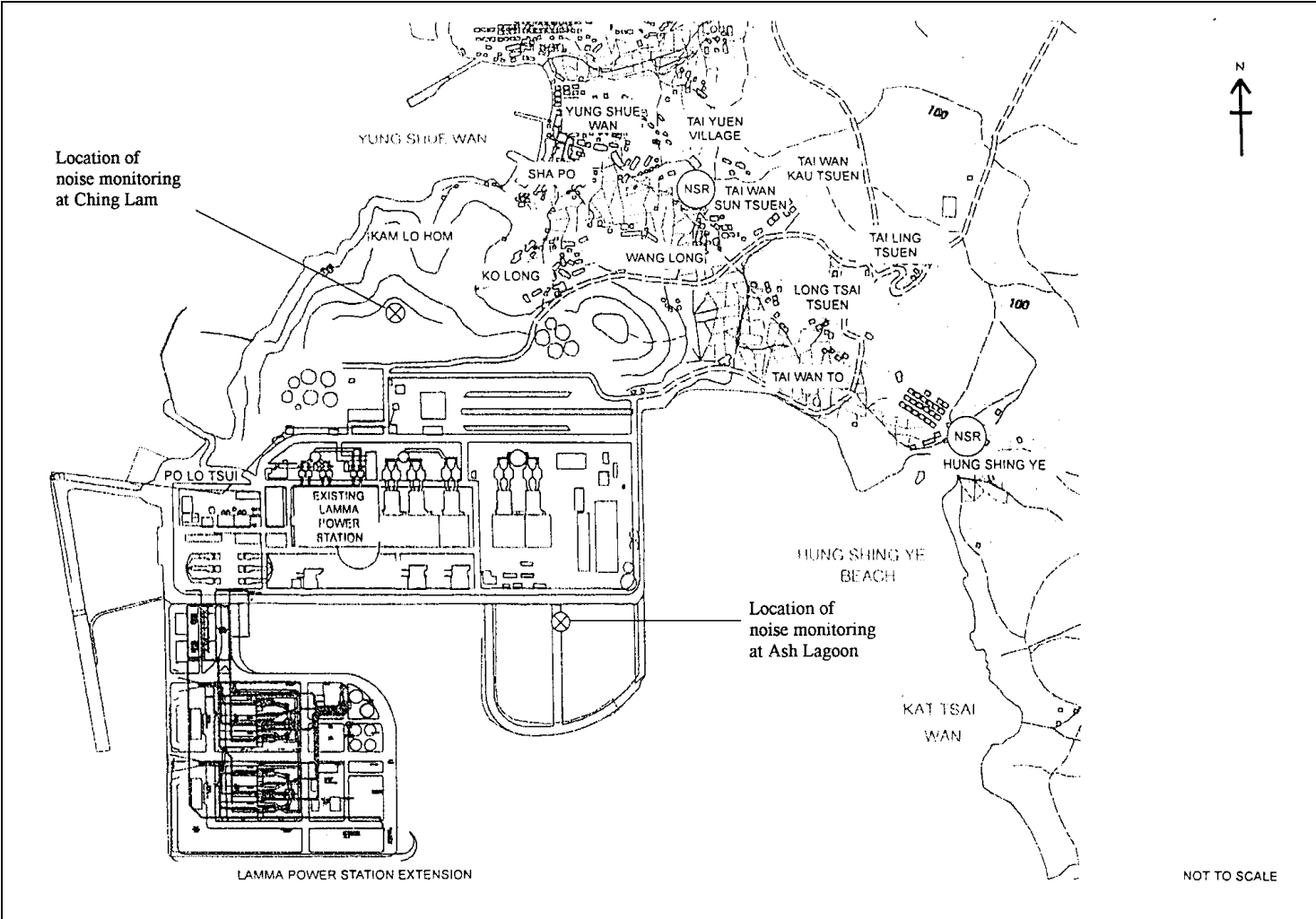


Figure 3.1 Location of Noise Monitoring Stations

## 4. ENVIRONMENTAL AUDIT

### 4.1 Review of Environmental Monitoring Procedures

The environmental monitoring procedures were regularly reviewed by the Environmental Team. No modification to the existing monitoring procedures was recommended.

### 4.2 Assessment of Environmental Monitoring Results

#### *Monitoring results for Air Quality and Noise*

The environmental monitoring results for Air Quality and Noise in the reporting month presented in Sections 2 and 3 respectively are summarized in [Table 4.1](#).

Table 4.1 Summary of AL Level Exceedances on Monitoring Parameters

Item	Parameter Monitored	Monitoring Period	No. of Exceedances In		Event/Action Plan Implementation Status and Results
			Action Level	Limit Level	
Air					
1	Ambient TSP (24-hour)	01/03/2026-31/03/2026	0	0	
2	Ambient TSP (1-hour)	01/03/2026-31/03/2026	0	0	
Noise					
1	Noise level at the critical NSR's predicted by the noise alarm monitoring system	01/03/2026-31/03/2026	0	0	

### 4.3 Waste Management

Wastes generated from this Project include inert construction and demolition (C&D) materials and non-inert C&D materials. Inert C&D materials comprise excavated materials and broken concrete. Non-inert C&D materials comprise general refuse, metals and paper/ cardboard packaging, plastics, chemical waste, etc.

Inert C&D material and non-inert C&D material disposed of in March 2026 are shown in [Table 4.2](#).

Table 4.2 Estimated Amounts of Waste in March 2026

Total Inert C&D Waste Materials	Non-inert C&D Materials		
	C&D Materials Recycled	C&D Waste Disposed of at Landfill	Chemical Waste
0 Tonnes	0 Tonnes	75.07 Tonnes	0 Tonnes

The monthly waste flow tables prepared by the contractors are attached in [Appendix K](#)

#### 4.4 Site Environmental Audit

EPD officials from Regional Office (South) visited Lamma Power Station on 27/3/2026. There was no adverse comment from EPD regarding the construction site.

Site audits were carried out by ET on a weekly basis to monitor environmental issues at the construction sites to ensure that all mitigation measures were implemented timely and properly. The site audit findings for the reporting month are summarized in [Appendix H](#). The site conditions were generally satisfactory. All required mitigation measures were implemented.

#### 4.5 Status of Environmental Licensing and Permitting

All permits/licenses obtained for the project are summarised in [Table 4.3](#).

Table 4.3 Summary of Environmental Licensing and Permit Status

Description	Permit No.	Valid Period		Highlights	Status
		From	To		
Varied Environmental Permit	EP-071/2000/D	28/09/20	-	The whole construction work site	Valid
Construction Noise Permit	GW-RS0081-26	23/02/26	22/08/26	Civil and building works for Unit L13. Operation of PME during restricted hours.	Valid
WPCO Discharge Licence#	WT00046647-2025	18/07/25	31/07/30	Civil and building works for Unit L13	Valid
Waste Disposal Billing Account	Account No.: 7054247	03/04/25	-	Civil and building works for Unit L13	Valid

Notes: # - Water quality monitoring was carried out in March 2026 and the result of which would be reported separately by the contractor.

#### 4.6 Implementation Status of Environmental Mitigation Measures

Mitigation measures detailed in the permits and the EM&A Manual (Construction Phase) are required to be implemented. An updated summary of the Environmental Mitigation Implementation Schedule (EMIS) is presented in [Appendix I](#).

#### 4.7 Implementation Status of Event/Action Plans

The Event/Action Plans extracted from the EM&A Manual (Construction Phase) are presented in [Appendix G](#).

#### 4.8 Implementation Status of Environmental Complaint Handling Procedures

In March 2026, no complaint in relation to the environmental impact of the construction activities was received.

Table 4.4 Environmental Complaints Received in March 2026

Case Reference / Date, Time Received / Date, Time Concerned	Descriptions / Actions Taken	Conclusion / Status
Nil	N/A	N/A

Table 4.5 Outstanding Environmental Complaints Carried Over

Case Reference / Date, Time Received / Date, Time Concerned	Descriptions / Actions Taken	Conclusion / Status
Nil	N/A	N/A

## **5. FUTURE KEY ISSUES**

### **5.1 Key Issues for the Coming Month**

Key issues to be considered in the coming month include:

#### Unit L13 Civil and Building Works

##### *Noise Impact*

- To continue monitoring the noise level during construction and to ensure compliance with the CNP's already obtained.

##### *Air Impact*

- To monitor and review the sufficiency of the dust suppression measures provided and increase the resources accordingly if necessary.

##### *Water Impact*

- To treat wastewater in sedimentation tank for reuse on construction activities and to ensure compliance with the WPCO discharge licence already obtained.

### **5.2 Monitoring Schedules for the Next 3 Months**

The tentative environmental monitoring schedules for the next 3 months are shown in [Appendix C](#).

### **5.3 Construction Program for the Next 3 Months**

The tentative construction programs for the next 3 months are shown in [Appendix J](#).

## 6. CONCLUSION

All monitoring work at designated stations was performed as scheduled satisfactorily. The environmental monitoring works and site inspection were performed as scheduled in the reporting month. All monitoring results were checked and reviewed.

No Action/Limit level exceedance on 1-hour and 24-hour TSP level was recorded in the reporting month.

No Action/Limit level exceedance on noise was recorded in the reporting month.

Environmental mitigation measures recommended in the EM&A manual for the construction activities were implemented in the reporting month. No complaint in relation to the environmental impact of the construction activities was received in the reporting month. No prosecution was received for this Project in the reporting period.

The environmental performance of the Project was generally satisfactory.

Appendix A Organization Chart

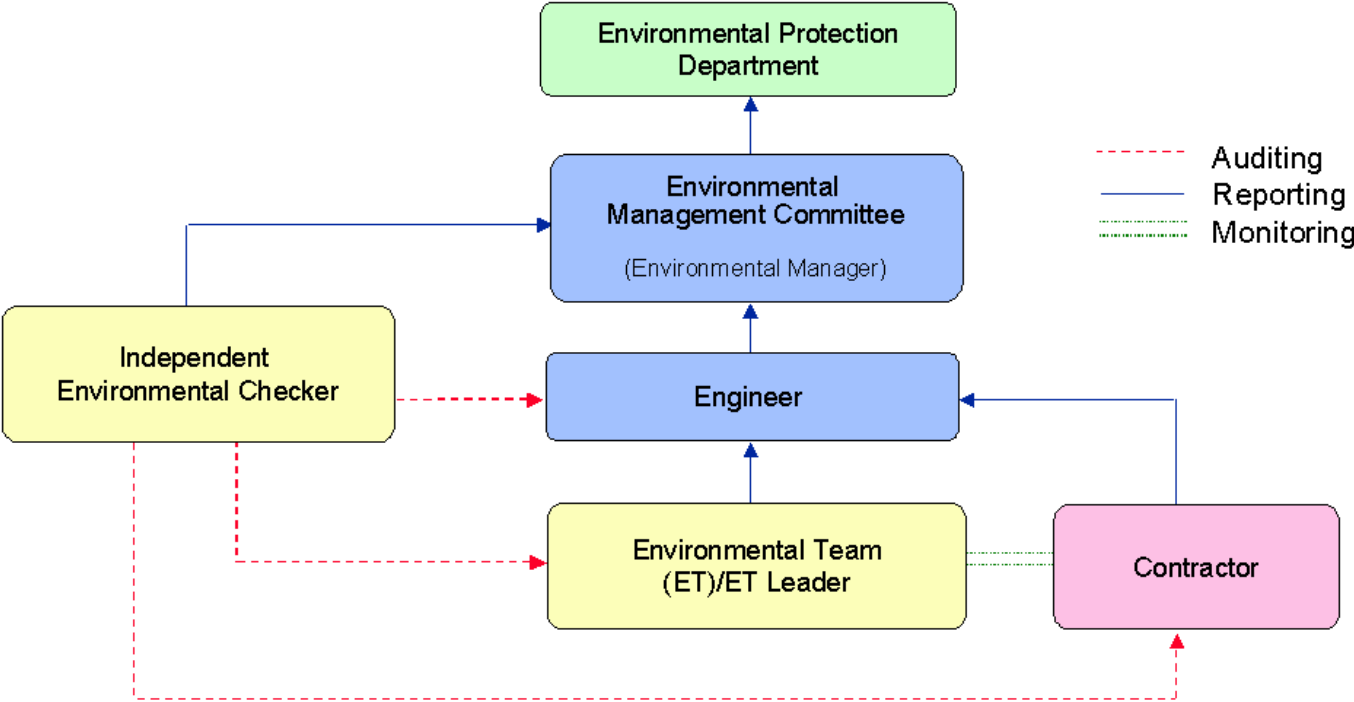


Figure A.1 Organisation of EM&A Programme at Construction Phase

## Appendix B Action and Limit Levels for Air Quality and Noise Monitoring

### B.1. Air

Table B.1 Action and Limit Levels for 1-hour and 24-hour TSP

	Action Level, $\mu\text{g}/\text{m}^3$	Limit Level, $\mu\text{g}/\text{m}^3$
1-hour TSP*	340	500
24-hour TSP	190	260

\* No Action/Limit Level for 1-hour TSP is applied to AM4 where no real time dust monitor is installed.

### B.2. Noise

Table B.2 AL Levels for Construction Noise (Other than Percussive Piling)

Parameters	Action	Limit
Noise Levels at the NSR's at Long Tsai Tsuen/Hung Shing Ye and school within the village of Tai Wan San Tsuen predicted by the noise alarm monitoring system	When one or more documented complaints are received	a. 75 dB(A) in $L_{Aeq,30 \text{ min}}$ (07:00-19:00 hrs on normal weekdays) (Note 1)
Manual noise monitoring at the nearest Pak Kok Tsui residences to cable landing points N4 and N5		b. subject to statutory control under the Noise Control Ordinance (07:00-23:00 hrs on holidays and 19:00-23:00 hrs on all other days). Set to 60 dB(A) in $L_{Aeq,5 \text{ min}}$ c. subject to statutory control under the Noise Control Ordinance (23:00-07:00 hrs of next day). Set to 45 dB(A) in $L_{Aeq,5 \text{ min}}$
Note:		
1. For educational institution, the limit level shall be 70 dB(A), reduced to 65 dB(A) during examination periods.		

## Appendix C Environmental Monitoring Schedule

Table C.1 Monitoring schedule for 24hr and 1hr TSP monitoring for Lamma Extension Construction (March 2026 to June 2026)

24hr TSP Monitoring	1hr TSP Monitoring
5/March/2026	5/March/2026 1500hr to 1800hr
11/March/2026	11/March/2026 1500hr to 1800hr
17/March/2026	17/March/2026 1500hr to 1800hr
22/March/2026	22/March/2026 1500hr to 1800hr
29/March/2026	29/March/2026 1500hr to 1800hr
4/April/2026	4/April/2026 1500hr to 1800hr
10/April/2026	10/April/2026 1500hr to 1800hr
16/April/2026	16/April/2026 1500hr to 1800hr
22/April/2026	22/April/2026 1500hr to 1800hr
28/April/2026	28/April/2026 1500hr to 1800hr
4/May/2026	4/May/2026 1500hr to 1800hr
10/May/2026	10/May/2026 1500hr to 1800hr
16/May/2026	16/May/2026 1500hr to 1800hr
22/May/2026	22/May/2026 1500hr to 1800hr
28/May/2026	28/May/2026 1500hr to 1800hr
3/June/2026	3/June/2026 1500hr to 1800hr
9/June/2026	9/June/2026 1500hr to 1800hr
15/June/2026	15/June/2026 1500hr to 1800hr
22/June/2026	22/June/2026 1500hr to 1800hr
27/June/2026	27/June/2026 1500hr to 1800hr

## APPENDIX D AIR QUALITY MONITORING RESULTS

Site: Lamma Power Station Extension

Month: March 2026

24 hour TSP Measurement:-

Date	TSP concentration ( $\mu\text{g}/\text{m}^3$ )				Weather Information (From Hong Kong Observatory)		
	Reservoir (AM1)	East Gate (AM2)	Ash Lagoon (AM3)	Tai Yuen Village (AM4)	Mean Wind Speed (km/hr)	Prevailing Wind Dir. ( $^{\circ}$ )	Mean R.H. (%)
5/3/2026	14	20	14	24	15.5	10	78
11/3/2026	33	32	30	28	14.0	70	74
17/3/2026	38	36	34	35	20.1	50	81
23/3/2026	27	29	25	29	4.7	30	79
29/3/2026	42	39	39	29	17.6	70	86

1 hour TSP Measurement:-

Date	Time	TSP concentration ( $\mu\text{g}/\text{m}^3$ )		
		Reservoir (AM1)	East Gate (AM2)	Ash Lagoon (AM3)
5/3/2026	15:00 - 15:59	15	24	12
	16:00 - 16:59	21	23	12
	17:00 - 17:59	16	20	13
11/3/2026	15:00 - 15:59	34	35	32
	16:00 - 16:59	35	35	31
	17:00 - 17:59	40	33	31
17/3/2026	15:00 - 15:59	46	43	41
	16:00 - 16:59	32	33	27
	17:00 - 17:59	26	32	32
23/3/2026	15:00 - 15:59	37	40	26
	16:00 - 16:59	32	44	24
	17:00 - 17:59	26	43	27
29/3/2026	15:00 - 15:59	55	54	64
	16:00 - 16:59	60	56	61
	17:00 - 17:59	54	52	53

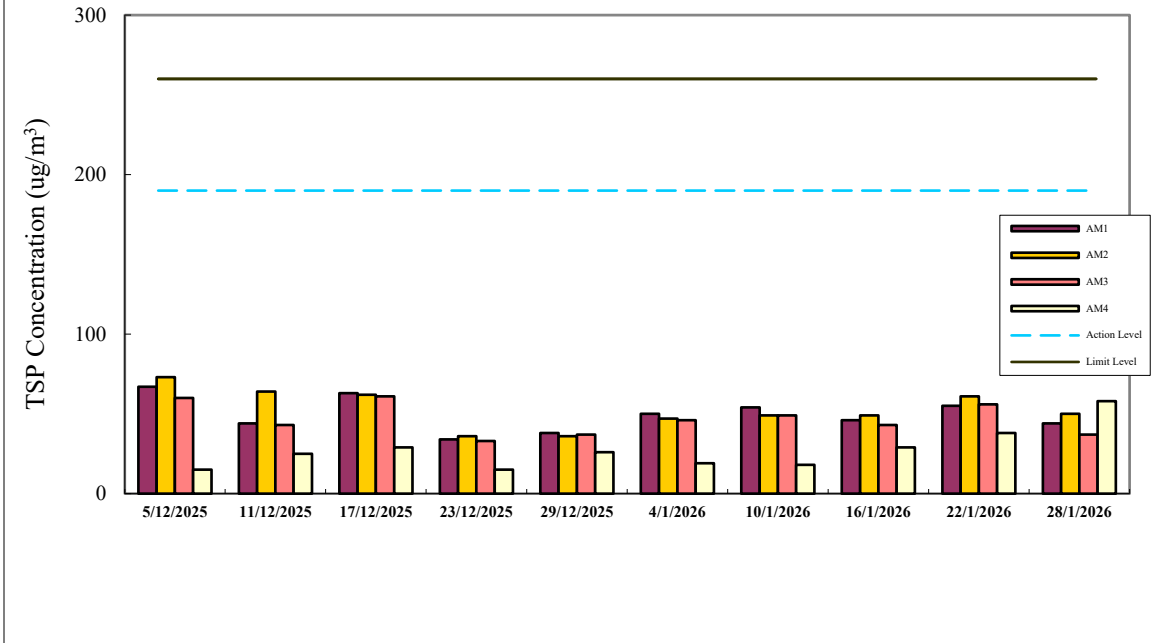
	1-hr TSP ( $\mu\text{g}/\text{m}^3$ )	24-hr TSP ( $\mu\text{g}/\text{m}^3$ )
Action Level	340	190
Limit Level	500	260

Calibration: Calibration details are shown in appendix F.

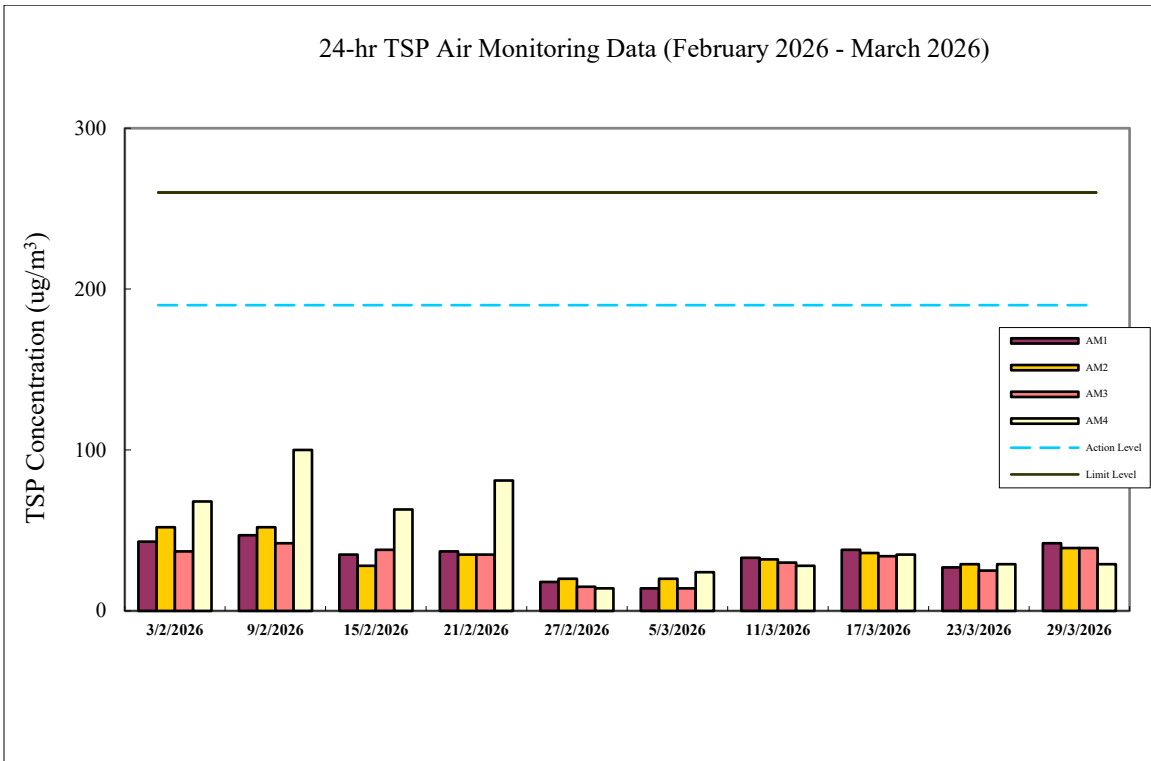
Equipment used:

Location	1-hr TSP	24-hr TSP
Reservoir, East Gate and Ash Lagoon	TEOM	TEOM
Tai Yuen Village	-	MINIVOL Portable Sampler

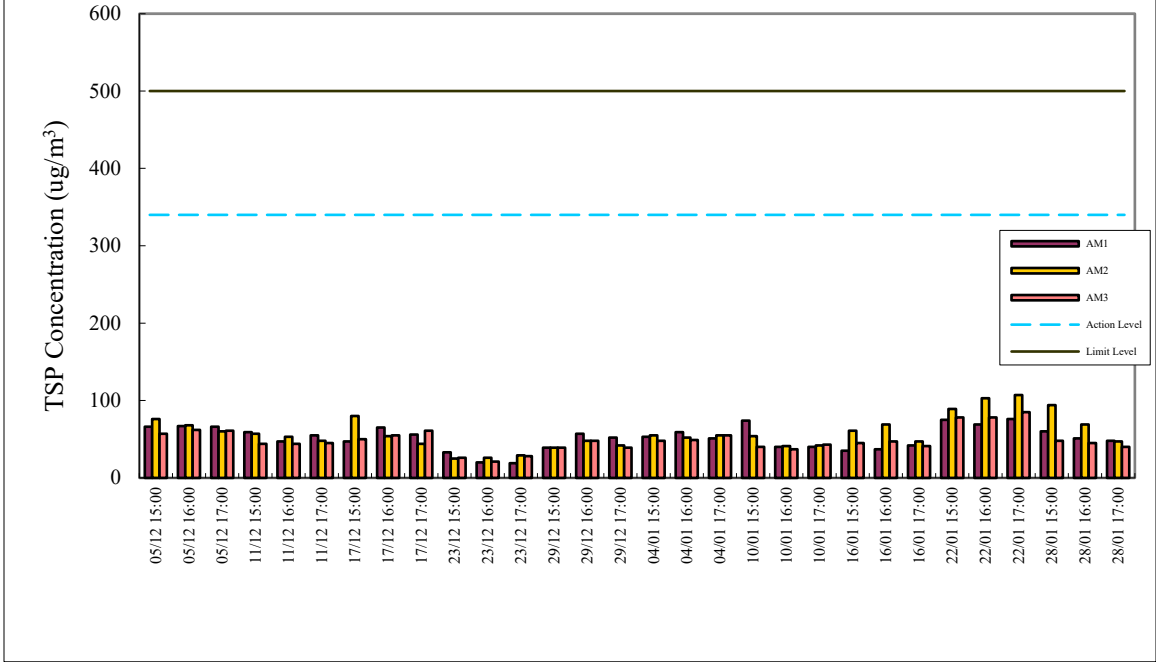
24-hr TSP Air Monitoring Data (December 2025 - January 2026)



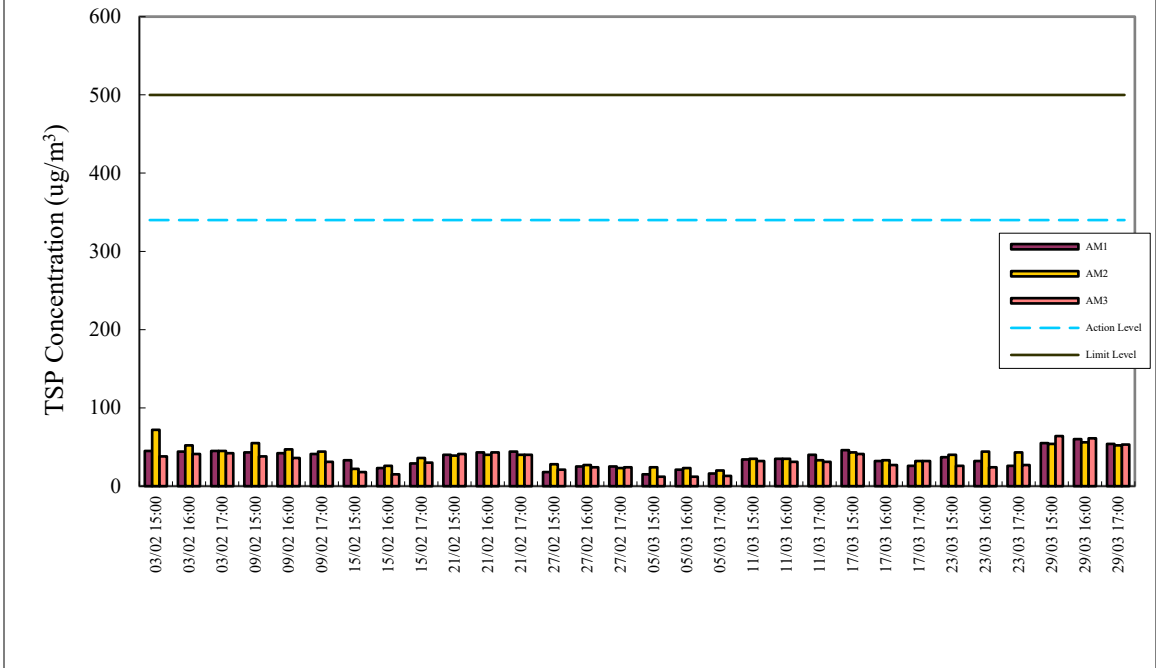
24-hr TSP Air Monitoring Data (February 2026 - March 2026)



1-hr TSP Air Monitoring Data (December 2025 - January 2026)



1-hr TSP Air Monitoring Data (February 2026 - March 2026)



## Appendix E

## Continuous Noise Monitoring Results for March 2026

Site: Lamma Power Station Extension Construction  
 Measurement Location: Ash Lagoon and Ching Lam  
 Measurement Parameter: 30-min Leq (07:00-19:00 hrs on normal weekdays)  
 5-min Leq (07:00-23:00 hrs on holidays and  
 19:00-23:00 hrs on all other days, and 23:00-  
 07:00 hrs of next day)  
 Noise Equipment: B&K 2250 sound level meters and B&K 4231 sound  
 level calibrator  
 Lab. Calibration Date: B&K 2250 sound level meters - 18/6/2024 (Ash Lagoon)  
 9/7/2025 (Ching Lam)  
 B&K 4231 calibrator (7/5/2025)

Date	Time	Calculated Noise Level at NSR at Long Tsai Tsuen/Hung Shing Ye (dB(A))		Limit Noise Level (dB(A))	Calculated Noise Level at NSR at the school within Tai Wan San Tsuen (dB(A))		Limit Noise Level (dB(A))
		Max	Avg		Max	Avg	
1/03/2026	07:00-23:00	60	37	60	60	47	60
1/03/2026	23:00-07:00	45	39	45	45	39	45
2/03/2026	07:00-19:00	---	---	75	47	42	70
2/03/2026	19:00-23:00	41	33	60	41	34	60
2/03/2026	23:00-07:00	44	30	45	42	30	45
3/03/2026	07:00-19:00	---	---	75	44	28	70
3/03/2026	19:00-23:00	46	41	60	45	34	60
3/03/2026	23:00-07:00	44	31	45	43	33	45
4/03/2026	07:00-19:00	---	---	75	33	33	70
4/03/2026	19:00-23:00	44	36	60	39	34	60
4/03/2026	23:00-07:00	44	35	45	40	35	45
5/03/2026	07:00-19:00	---	---	75	27	27	70
5/03/2026	19:00-23:00	41	33	60	46	36	60
5/03/2026	23:00-07:00	34	31	45	42	36	45
6/03/2026	07:00-19:00	49	47	75	50	41	70
6/03/2026	19:00-23:00	38	38	60	54	43	60
6/03/2026	23:00-07:00	45	42	45	45	39	45
7/03/2026	07:00-19:00	50	50	75	60	51	70
7/03/2026	19:00-23:00	---	---	60	60	49	60
7/03/2026	23:00-07:00	---	---	45	45	40	45
8/03/2026	07:00-23:00	43	40	60	60	49	60
8/03/2026	23:00-07:00	---	---	45	45	40	45
9/03/2026	07:00-19:00	---	---	75	67	51	70
9/03/2026	19:00-23:00	---	---	60	59	51	60
9/03/2026	23:00-07:00	41	39	45	45	36	45
10/03/2026	07:00-19:00	51	51	75	40	38	70
10/03/2026	19:00-23:00	44	44	60	46	37	60
10/03/2026	23:00-07:00	32	32	45	45	38	45
11/03/2026	07:00-19:00	---	---	75	53	46	70
11/03/2026	19:00-23:00	---	---	60	45	39	60
11/03/2026	23:00-07:00	34	34	45	45	38	45
12/03/2026	07:00-19:00	---	---	75	62	48	70
12/03/2026	19:00-23:00	39	39	60	59	50	60
12/03/2026	23:00-07:00	35	32	45	23	23	45
13/03/2026	07:00-19:00	48	48	75	65	58	70
13/03/2026	19:00-23:00	48	48	60	43	43	60
13/03/2026	23:00-07:00	---	---	45	45	43	45

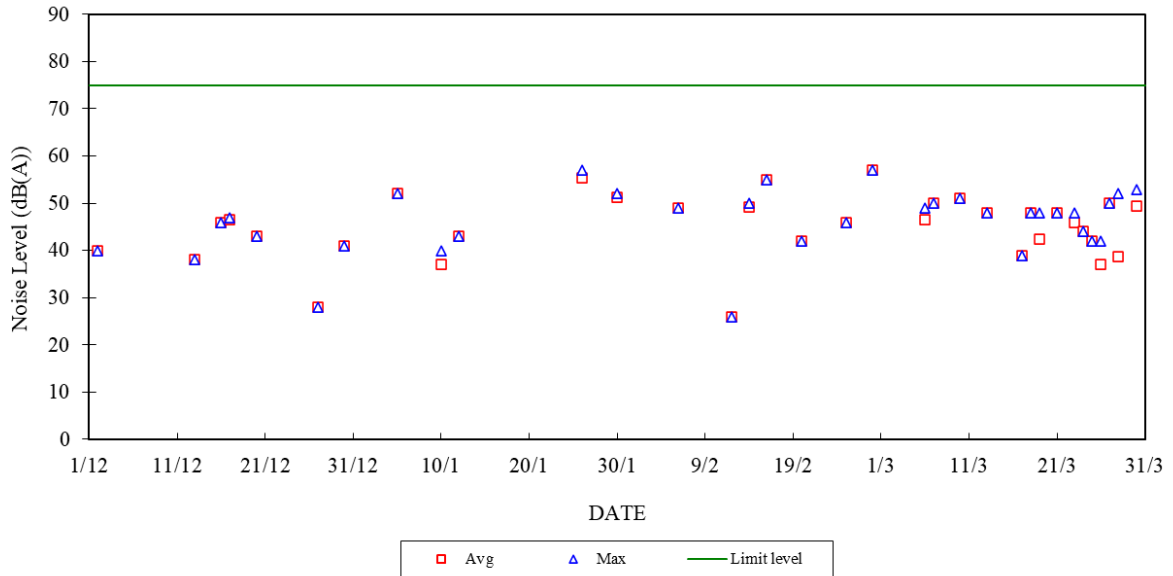
14/03/2026	07:00-19:00	---	---	75	64	50	70
14/03/2026	19:00-23:00	---	---	60	57	47	60
14/03/2026	23:00-07:00	34	34	45	45	39	45
15/03/2026	07:00-23:00	35	35	60	60	50	60
15/03/2026	23:00-07:00	---	---	45	45	40	45
16/03/2026	07:00-19:00	---	---	75	67	56	70
16/03/2026	19:00-23:00	43	43	60	59	45	60
16/03/2026	23:00-07:00	---	---	45	45	39	45
17/03/2026	07:00-19:00	39	39	75	63	46	70
17/03/2026	19:00-23:00	---	---	60	60	48	60
17/03/2026	23:00-07:00	---	---	45	43	36	45
18/03/2026	07:00-19:00	48	48	75	40	35	70
18/03/2026	19:00-23:00	45	40	60	43	35	60
18/03/2026	23:00-07:00	---	---	45	42	35	45
19/03/2026	07:00-19:00	48	42	75	46	40	70
19/03/2026	19:00-23:00	43	38	60	45	41	60
19/03/2026	23:00-07:00	41	33	45	41	31	45
20/03/2026	07:00-19:00	---	---	75	66	57	70
20/03/2026	19:00-23:00	44	31	60	60	48	60
20/03/2026	23:00-07:00	38	35	45	45	38	45
21/03/2026	07:00-19:00	48	48	75	65	50	70
21/03/2026	19:00-23:00	44	39	60	60	51	60
21/03/2026	23:00-07:00	35	29	45	45	36	45
22/03/2026	07:00-23:00	52	37	60	60	44	60
22/03/2026	23:00-07:00	37	37	45	39	34	45
23/03/2026	07:00-19:00	48	46	75	40	37	70
23/03/2026	19:00-23:00	40	37	60	47	38	60
23/03/2026	23:00-07:00	40	40	45	42	34	45
24/03/2026	07:00-19:00	44	44	75	41	38	70
24/03/2026	19:00-23:00	44	36	60	37	31	60
24/03/2026	23:00-07:00	36	36	45	43	36	45
25/03/2026	07:00-19:00	42	42	75	42	32	70
25/03/2026	19:00-23:00	38	34	60	38	32	60
25/03/2026	23:00-07:00	44	44	45	43	38	45
26/03/2026	07:00-19:00	42	37	75	41	41	70
26/03/2026	19:00-23:00	30	29	60	55	43	60
26/03/2026	23:00-07:00	43	41	45	45	40	45
27/03/2026	07:00-19:00	50	50	75	56	45	70
27/03/2026	19:00-23:00	37	37	60	50	42	60
27/03/2026	23:00-07:00	28	27	45	45	39	45
28/03/2026	07:00-19:00	52	39	75	51	39	70
28/03/2026	19:00-23:00	39	34	60	60	49	60
28/03/2026	23:00-07:00	41	35	45	45	38	45
29/03/2026	07:00-23:00	51	40	60	60	48	60
29/03/2026	23:00-07:00	---	---	45	43	43	45
30/03/2026	07:00-19:00	53	49	75	61	53	70
30/03/2026	19:00-23:00	27	27	60	43	37	60
30/03/2026	23:00-07:00	---	---	45	45	41	45
31/03/2026	07:00-19:00	---	---	75	61	57	70
31/03/2026	19:00-23:00	29	29	60	58	48	60
31/03/2026	23:00-07:00	45	45	45	45	39	45

Note:

- a. "---" represents the measured noise monitoring data lower than the established notional background level/discarded under strong wind.
- b. Continuous noise monitoring was also carried out at holidays & evening-time (07:00-23:00 hrs on holidays and 19:00-23:00 hrs on all other days) and night-time (23:00-07:00 hrs of next day).

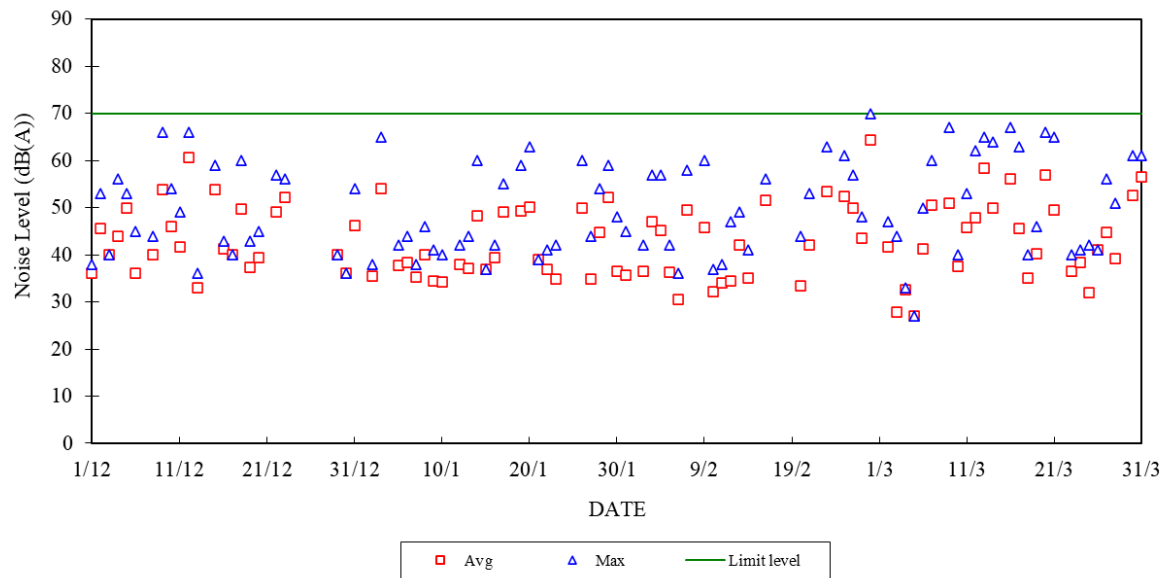
### Construction Noise Monitoring in December 2025 - March 2026

NSR at Long Tsai Tsuen/Hung Shing Ye  
07:00-19:00 hrs on Normal Weekdays

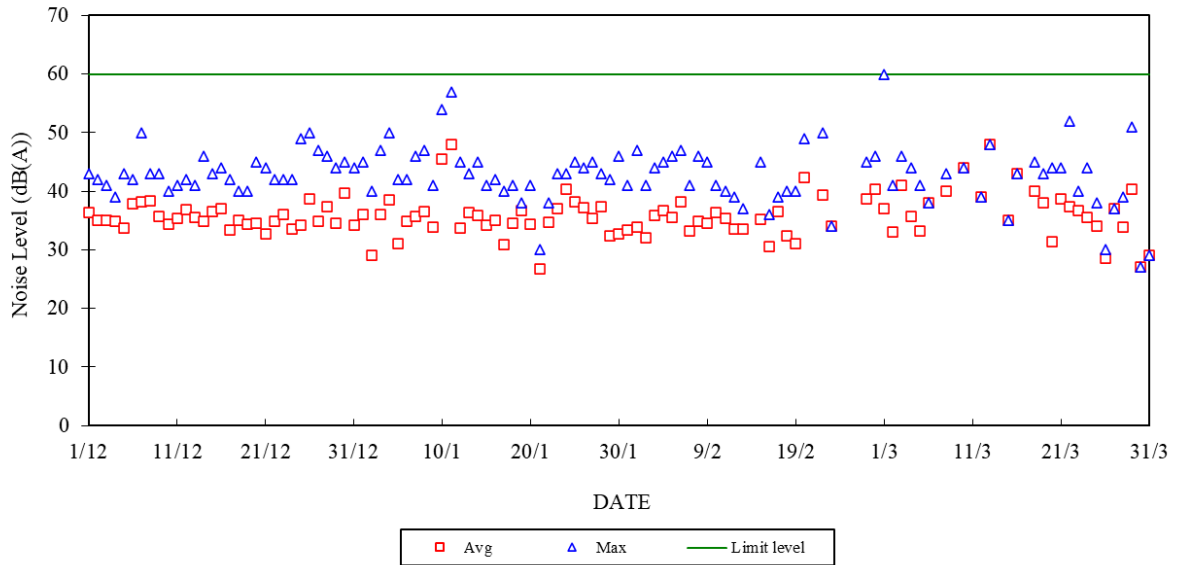


### Construction Noise Monitoring in December 2025 - March 2026

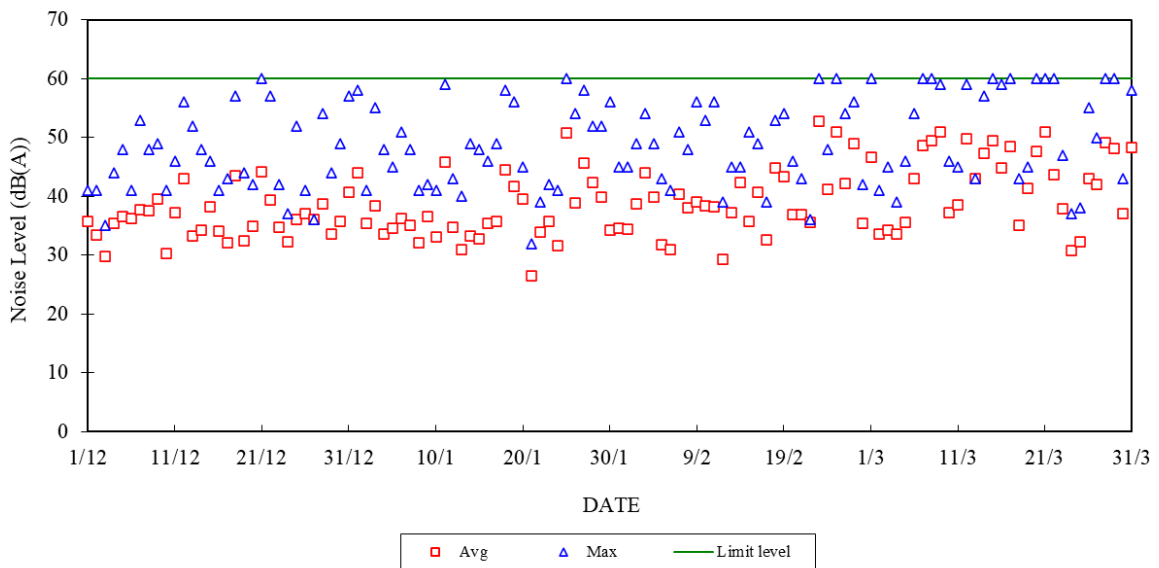
NSR at School within Tai Wan San Tsuen  
07:00-19:00 hrs on Normal Weekdays



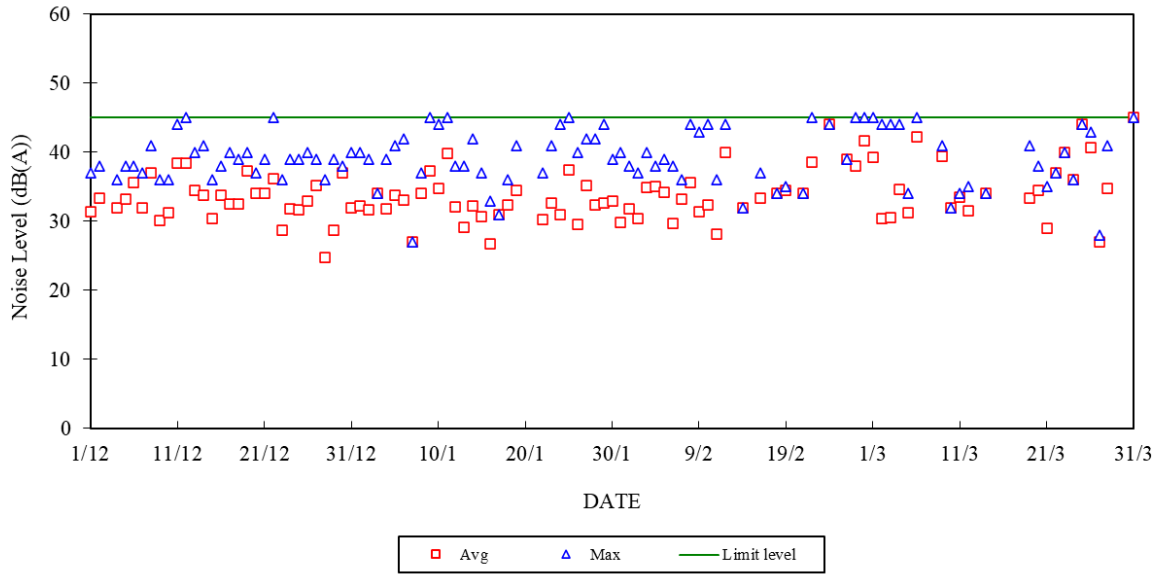
**Construction Noise Monitoring in December 2025 - March 2026**  
NSR at Long Tsai Tsuen/Hung Shing Ye  
07:00-23:00 hrs on Holidays and 19:00-23:00 hrs on All Other Days



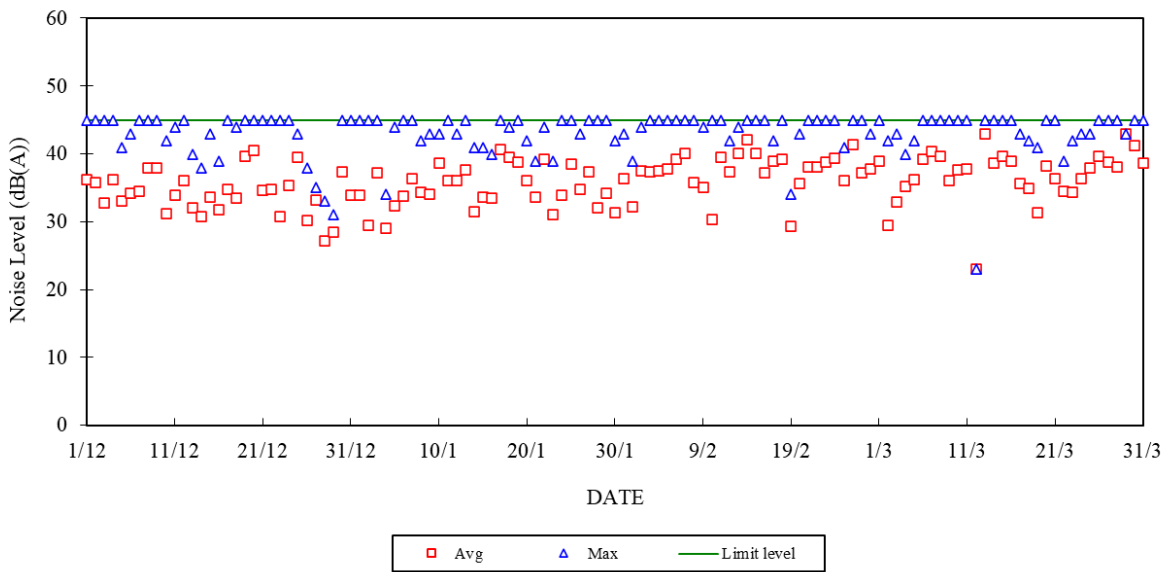
**Construction Noise Monitoring in December 2025 - March 2026**  
NSR at School within Tai Wan San Tsuen  
07:00-23:00 hrs on Holidays and 19:00-23:00 hrs on All Other Days



**Construction Noise Monitoring in December 2025 - March 2026**  
NSR at Long Tsai Tsuen/Hung Shing Ye  
23:00-07:00 hrs of Next Day



**Construction Noise Monitoring December 2025 - March 2026**  
NSR at School within Tai Wan San Tsuen  
23:00-07:00 hrs of Next Day



# Appendix F

## The QA/QC Procedures and Results

**The Hongkong Electric Co., Ltd.**  
**Lamma Power Station Extension**  
**TEOM Continuous Dust Monitor**  
**Data Quality Assurance Log Sheet**

Month: March

Year: 2026

Reservoir (AM1)				
Date	Frequency (Hz) (240 - 275)	Operation Mode (Mode 4)	Main Flow (l/min) (2.70 - 3.30)	Bypass Flow (l/min) (12.30 - 15.04)
5/3/2026	256.620	4	3.09	14.09
11/3/2026	256.079	4	3.11	14.17
17/3/2026	255.507	4	3.07	14.01
23/3/2026	258.019	4	3.04	13.87
29/3/2026	257.568	4	3.03	13.82

East Gate (AM2)				
Date	Frequency (Hz) (240 - 275)	Operation Mode (Mode 4)	Main Flow (l/min) (2.70 - 3.30)	Bypass Flow (l/min) (12.30 - 15.04)
5/3/2026	254.353	4	3.00	13.66
11/3/2026	253.779	4	3.00	13.66
17/3/2026	253.196	4	3.00	13.66
23/3/2026	255.113	4	3.00	13.66
29/3/2026	254.625	4	3.00	13.66

Ash Lagoon (AM3)				
Date	Frequency (Hz) (240 - 275)	Operation Mode (Mode 4)	Main Flow (l/min) (2.70 - 3.30)	Bypass Flow (l/min) (12.30 - 15.04)
5/3/2026	257.450	4	3.00	13.67
11/3/2026	256.935	4	3.00	13.67
17/3/2026	256.397	4	3.00	13.67
23/3/2026	256.005	4	3.00	13.67
29/3/2026	255.645	4	3.00	13.67

Maintenance Record			
	Reservoir	East Gate	Ash Lagoon
TEOM Filter Exchange	✓	✓	✓
Clean TSP Inlet	✓	✓	✓
Replace flow in-line filter	✓	✓	✓
Pump Repair			
Leak Check			
Flow audit			
Flow Controller Calibration			
A/C filter cleaning			

Remarks:

Prepared by: Chris Chan

Checked by: HY Chan

**The Hongkong Electric Co., Ltd.**  
**Mini Volume Air Sampler Site Visit Log Sheet**

Attendance Log

Site Name: Tai Yuen Village (AM4)

Date/Time	Staff Name
26/3/2026 / 10:00	Alex Ng

Equipment / Item

Equipment / Item	Serial No. / No.
MINIVOL	8468
Used Filter Paper No.	MU28
New Filter Paper No.	MU29

Type of Filter: Glass-fibre

- I. Calibration is performed by using Drycal DC-2 Flow Calibrator  
 5 std. L/min set point is recommended

Before: 5.00  
 After: 5.00 (No Adjustment)

- II. General Services

1. Clean Rotameter: Yes  
 2. Clean / Replace Pump Valves: No  
 3. Clean / Replace Pump Diaphragms: No  
 4. Clean Impaction Inlet: Yes  
 5. Replace Timer Battery Every 6 months: Yes  
 6. Replace Inlet Filter: Yes

- III. Remarks

---



---



---

Conducted by: Alex Ng Checked by: SM Hon

**The Hongkong Electric Co., Ltd.**  
**Lamma Power Station Extension**  
**Noise Monitoring Station**  
**Daily Calibration Records**

Date	Location: Ash Lagoon		Location: Ching Lam	
	Calibration Results	Deviation from Reference (dB)	Calibration Results	Deviation from Reference (dB)
01/03/2026	Passed	0.02	Passed	-0.05
02/03/2026	Passed	0.02	Passed	-0.03
03/03/2026	Passed	-0.03	Passed	-0.07
04/03/2026	Passed	0.02	Passed	-0.11
05/03/2026	Passed	0.07	Passed	-0.08
06/03/2026	Passed	0.29	Passed	-0.08
07/03/2026	Passed	0.33	Passed	-0.04
08/03/2026	Passed	0.32	Passed	-0.07
09/03/2026	Passed	0.33	Passed	-0.03
10/03/2026	Passed	0.32	Passed	-0.09
11/03/2026	Passed	0.33	Passed	-0.08
12/03/2026	Passed	0.31	Passed	-0.05
13/03/2026	Passed	0.33	Passed	-0.08
14/03/2026	Passed	0.30	Passed	-0.09
15/03/2026	Passed	0.30	Passed	0.13
16/03/2026	Passed	0.29	Passed	-0.09
17/03/2026	Passed	0.25	Passed	0.04
18/03/2026	Passed	0.16	Passed	-0.03
19/03/2026	Passed	0.11	Passed	-0.03
20/03/2026	Passed	0.10	Passed	-0.03
21/03/2026	Passed	0.10	Passed	-0.05
22/03/2026	Passed	0.11	Passed	-0.05
23/03/2026	Passed	0.10	Passed	-0.01
24/03/2026	Passed	0.11	Passed	-0.03
25/03/2026	Passed	0.12	Passed	-0.03
26/03/2026	Passed	0.12	Passed	0.00
27/03/2026	Passed	0.11	Passed	-0.03
28/03/2026	Passed	0.12	Passed	-0.02
29/03/2026	Passed	0.12	Passed	-0.01
30/03/2026	Passed	0.11	Passed	0.00
31/03/2026	Passed	0.11	Passed	0.00

Remarks:

1. The B&K sound level meter at the noise monitoring station has an advanced feature of internal calibration checking (viz. Charge Injection Calibration (CIC)). CIC is a B&K patented method for in situ verification of the integrity of the entire sound measurement chain (including microphone, preamplifier and cabling).
2. The acceptance criterion of deviation from reference is  $\pm 0.5$  dB.

## Appendix G Event/Action Plans

Table G.1 Event and Action Plans for Air Quality

Event	Monitoring		Action	
	ET Leader	IEC	Engineer	Contractor
<b>Action Level</b>				
Exceedance of one sample	Identify source Inform Engineer and IEC verbally Repeat measurement to confirm finding	Check monitoring data submitted by ET and advise Engineer.	Notify Contractor Checking monitoring data and contractor's working methods	Rectify any unacceptable practice amend any working methods if appropriate
Exceedance of two or more consecutive samples	Identify source Inform Engineer and IEC verbally Repeat measurement to confirm finding Increase monitoring frequency Discuss with Engineer and Contractor on remedial actions required If exceedance continues, arrange meeting with Engineer If exceedance stops, discontinue additional monitoring	Check monitoring data submitted by ET and advise Engineer. Provide feedback to the Engineer on the remedial actions proposed by the ET / Contractor Advise Engineer on the effectiveness of the proposed remedial measures Verify the implementation of the remedial measures	Confirm receipt of notification of failure in writing Notify contractor Checking monitoring data and contractor's working methods Discuss proposed remedial actions with the ET and Contractor Ensure remedial actions properly implemented	Submit proposals for remedial actions to Engineer within 3 working days of notifications Implement the agreed proposals Amend proposal if appropriate
<b>Limit level</b>				
Exceedance of one sample	Repeat measurement to confirm finding. Identify the source(s) of the impact. If the exceedance is found to be valid and due to the Construction works, verbally advise the Contractor, Engineer and IEC, and inform the EPD of the exceedance, as soon as practicable. Increase monitoring frequency to daily Assess the effectiveness of the contractor's remedial actions and keep Engineer, IEC and EPD informed of the results	Check monitoring data submitted by ET and advise Engineer Provide feedback to the Engineer on the remedial actions proposed by the ET / Contractor Advise Engineer on the effectiveness of the proposed remedial measures Verify the implementation of the remedial measures	Confirm receipt of notification of failure in writing Notify Contractor Checking monitoring data and Contractor's working method Discuss with ET and Contractor on remedial actions to be provided Ensure remedial measures properly implemented	Take immediate action to avoid further exceedance Submit proposals for remedial actions to Engineer within 3 working days of notifications Implement the agreed proposals Amend proposal if appropriate
Exceedance of two or more	Identify source	Provide feedback to the Engineer on the remedial actions proposed by the	Confirm receipt of notification of	Take immediate action to

Event	Monitoring			Action		
	ET Leader	IEC	Engineer	Contractor		
consecutive samples	<p>If the exceedance is found to be valid and due to the construction works, verbally advise the Contractor, Engineer and IEC, and inform the EPD of the exceedance as soon as practicable.</p> <p>Repeat measurement to confirm finding</p> <p>Increase monitoring frequency to daily</p> <p>Carry out analysis of Contractor's working procedures to determine possible mitigation to be implemented</p> <p>Arrange meeting with Engineer and Contractor to discuss the remedial actions to be taken</p> <p>If exceedance stops, discontinue additional monitoring</p>	<p>ET / Contractor</p> <p>Advise Engineer on the effectiveness of the proposed remedial measures</p> <p>Verify the implementation of the remedial measures</p>	<p>failure in writing</p> <p>Checking monitoring data and Contractor's working methods</p> <p>Notify Contractor</p> <p>Discuss proposed remedial actions with ET and Contractor</p> <p>Ensure remedial measures properly implemented</p> <p>If exceedance continues, consider what portion of the work is responsible and instruct the Contractor to stop the portion of work until the exceedance is abated</p>	<p>avoid further exceedance</p> <p>Submit proposals for remedial actions to Engineer within 3 working days of notifications</p> <p>Implement the agreed proposals</p> <p>Resubmit proposals if problem still not under control</p> <p>Stop the relevant portion of works as determined by the Engineer until the exceedance is abated</p>		

Table G.2 Event and Action Plans for Construction Noise

Exceedance	ET Leader	IEC	Engineer	Contractor
<b>Action Level</b>	Undertake noise measurement/check monitoring data to establish validity of complaint.	Review the analysed results submitted by the ET.	Notify Contractor of the complaint if proven.	Submit proposals for remedial actions to Engineer.
	If the complaint is valid, inform Engineer and IEC verbally.	Review the remedial measures proposed by the Contractor and advise the Engineer and ET accordingly.	Check Contractor's working methods and advise IEC and ET accordingly.	Amend proposals if required by the Engineer.
	Identify the source(s) of the noise.	Verify the implementation of the remedial measures.	Remind the Contractor of his contractual obligations and discuss remedial actions.	Implement the remedial actions immediately upon instruction from the Engineer.
	Discuss remedial actions required with Contractor and Engineer.		Keep the Contractor informed of the efficacy of remedial actions.	Liaise with the Engineer to optimise the effectiveness of the agreed mitigation.
	Increase manual monitoring frequency to assess efficacy of remedial measures.			
	If exceedance continues, review implementation of appropriate mitigation measures.			
<b>Limit Level</b>	Repeat manual measurement/check monitoring data to confirm findings.	Agree potential remedial actions with Engineer, ET and Contractor.	Notify Contractor of exceedance.	Take immediate action to avoid further exceedance.
	Identify the source(s) of the impact. If the exceedance is found to be valid and due to the Construction works, verbally advise the Contractor, Engineer and IEC, and inform the EPD of the exceedance, as soon as practicable.	Review Contractor's remedial actions / measures to ensure their effectiveness and advise the Engineer and ET accordingly.	Check Contractor's working methods and advise IEC and ET accordingly.  Discuss with Contractor the remedial actions to be implemented.	Submit proposals for remedial actions to Engineer.  Amend proposals if required by the Engineer.
	Discuss remedial actions required with Engineer.	Verify the implementation of the remedial measures	Keep the Contractor informed of the efficacy of remedial actions. If the exceedance continues, consider what portion of the work is responsible and instruct the Contractor to stop the portion of work until the exceedance is abated	Implement remedial actions immediately upon instruction from the Engineer. If the exceedance continues, consider what portion of the work is responsible and, as instructed by the Engineer, stop the portion of work until the exceedance is abated
	Increase manual monitoring frequency to assess efficacy of remedial measures.			

Table G.3 Event and Action Plans for Water Quality

<b>Exceedance</b>	<b>ET Leader</b>	<b>IEC</b>	<b>Engineer</b>	<b>Contractor</b>
Action level exceeded on one sampling day	Verbally inform the Contractor, and IEC. Repeat in-situ measurement to confirm findings; Identify source(s) of impact; Check monitoring data, all plant, equipment and Contractor's working methods; Discuss mitigation measures with Engineer and Contractor; Repeat measurement on next day of exceedance.	Provide feedback to the Engineer on the remedial actions proposed by the ET / Contractor Advise Engineer on the effectiveness of the proposed remedial measures Verify the implementation of the remedial measures	Discuss with Contractor the proposed mitigation measures; Make agreement on the mitigation measures to be implemented; Assess the effectiveness of the implemented mitigation measures.	Inform the Engineer and confirm notification of the non-compliance in writing; Rectify unacceptable practice; Check all plant and equipment; Consider changes of working methods; Propose and discuss mitigation measures with Engineer; Implement the agreed mitigation measures.
Action level exceeded on more than one consecutive sampling day	Repeat in-situ measurements to confirm findings; Identify source(s) of impact; Inform Contractor and IEC; Check monitoring data, all plant, equipment and Contractor's working methods; Discuss mitigation measure with Engineer and Contractor; Ensure mitigation measures are implemented; Prepare to increase the monitoring frequency to daily; Repeat measurement on next day of exceedance.	Provide feedback to the Engineer on the remedial actions proposed by the ET / Contractor Advise Engineer on the effectiveness of the proposed remedial measures Verify the implementation of the remedial measures	Discuss with ET and Contractor on the proposed mitigation measures; Make agreement on the mitigation measures to be implemented; Assess the effectiveness of the implemented mitigation measures.	Inform the Engineer and confirm notification of the non-compliance in writing; Rectify unacceptable practice; Check all plant and equipment; Consider changes of working methods; Propose mitigation measures to Engineer within 3 working days and discuss with ET and Engineer; Implement the agreed mitigation measures.
Limit level exceeded on one sampling day	Verbally inform the Contractor, IEC and the EPD of the exceedance; Repeat in-situ measurement to confirm findings; Identify source(s) of impact; Check monitoring data, all plant,	Provide feedback to the Engineer on the remedial actions proposed by the ET / Contractor Advise Engineer on the effectiveness of the proposed remedial measures Verify the implementation of the remedial measures	Discuss with Contractor on the proposed mitigation measures; Request Contractor to critically review the working methods; Make agreement on the mitigation measures to be implemented; Assess the effectiveness of the	Inform the Engineer and confirm notification of the non-compliance in writing; Rectify unacceptable practice; Check all plant and equipment; Consider changes of working methods; Propose mitigation measures to Engineer

<b>Exceedance</b>	<b>ET Leader</b>	<b>IEC</b>	<b>Engineer</b>	<b>Contractor</b>
	<p>equipment and Contractor's working methods;</p> <p>Discuss mitigation measure with Engineer and Contractor;</p> <p>Ensure mitigation measures are implemented;</p> <p>Increase the monitoring frequency to daily until no exceedance of Limit level.</p>		implemented mitigation measures.	<p>within 3 working days and discuss with Engineer;</p> <p>Implement the agreed mitigation measures.</p>
<p>Limit level exceeded by more than one consecutive sampling day</p>	<p>Repeat in-situ measurement to confirm findings;</p> <p>Identify source(s) of impact;</p> <p>Inform Contractor, IEC and EPD;</p> <p>Check monitoring data, all plant, equipment and Contractor's working methods;</p> <p>Discuss mitigation measure with Engineer and Contractor;</p> <p>Ensure mitigation measures are implemented;</p> <p>Increase the monitoring frequency to daily until no exceedance of Limit level for two consecutive days.</p>	<p>Provide feedback to the Engineer on the remedial actions proposed by the ET / Contractor</p> <p>Advise Engineer on the effectiveness of the proposed remedial measures</p> <p>Verify the implementation of the remedial measures</p>	<p>Discuss with Contractor on the proposed mitigation measures;</p> <p>Request Contractor to critically review the working methods;</p> <p>Make agreement on the mitigation measures to be implemented;</p> <p>Assess the effectiveness of the implemented mitigation measures;</p> <p>Consider and instruct, if necessary, the Contractor to slow down or to stop all or part of the marine works until no exceedance of the Limit Level.</p>	<p>Inform the Engineer and confirm notification of the non-compliance in writing;</p> <p>Rectify unacceptable practice;</p> <p>Check all plant and equipment; Consider changes of working methods;</p> <p>Propose mitigation measures to Engineer within 3 working days and discuss with Engineer;</p> <p>Implement the agreed mitigation measures..</p> <p>As directed by the Engineer, to slow down or to stop all or part of the marine work</p>

## **Appendix H Summary of Site Audit Findings**

### L13 Civil and Building Works

Dates of Inspection: 3/3/2026, 10/3/2026, 17/3/2026, 24/3/2026 and 31/3/2026

#### Summary of Findings

##### *General*

- No environmental deficiency identified.

##### *Air Quality*

- No environmental deficiency identified.

##### *Noise*

- No environmental deficiency identified.

##### *Water Quality*

- No environmental deficiency identified.

##### *Waste Management*

- No environmental deficiency identified.

## Summary of EMIS

### Power Station – (Part B of EIA Report)

#### Construction Phase Mitigation Measures and their Implementation

EM&A Log Ref.	Mitigation Measures	Implementation Status
	<b>AIR QUALITY</b>	
A1	For general construction works, the dust control measures stipulated under the Air Pollution Control (Construction Dust) Regulation shall be complied with, such as: <ul style="list-style-type: none"> <li>the haul roads shall be sprayed with water to keep the entire road surface wet.</li> <li>the load carried by vehicle shall be covered by impervious sheeting to ensure no leakage of dusty materials from the vehicle.</li> <li>the heights from which fill materials are dropped shall be controlled to a practical level to minimise the fugitive dust arising from unloading.</li> </ul>	C C C
A2	For the concrete batching plant, the following control measures are recommended: <ul style="list-style-type: none"> <li>loading, unloading, handling, transfer or storage of any dusty materials shall be carried out in a totally enclosed system.</li> <li>The materials which may generate airborne dust emissions shall be wetted by water spray system.</li> <li>All receiving hoppers shall be enclosed on three sides up to 3m above unloading point.</li> <li>All conveyor transfer points shall be totally enclosed.</li> </ul>	N/A N/A N/A N/A
	<b>WATER QUALITY</b>	
B1	Silt curtains shall be installed on the eastern, southern and north western sides of the reclamation site during dredging for the reclamation construction. This is a required mitigation measure for the construction works and shall be implemented prior to the commencement of bulk dredging. **	N/A
B3	As a necessary operational constraint combined bulk dredging and sand filling for site formation shall not be permitted at any time. In addition, sand filling for site platform shall take place behind constructed sea walls which pierce the water surface. **	N/A
B4	HEC shall ensure design to divert all storm drains away from Hung Shing Ye Bay. **	N/A
B5	Sand fill for the rubble mound seawalls shall be placed by controlled pumping down the trailer arm. **	N/A
B6	EM&A shall confirm the acceptability of any impacts during construction and should any unacceptable impacts be found then one or more of the following mitigation measures shall be implemented: ** <ul style="list-style-type: none"> <li>reducing the number of dredgers working at any one time;</li> <li>reducing the rate of working of the dredgers;</li> <li>temporary suspension of operations;</li> <li>phasing of the works so that dredging / filling is only undertaken at certain stages of the tidal cycle.</li> </ul>	N/A

EM&A Log Ref.	Mitigation Measures	Implementation Status
B7	<p>In addition to the above specific measures the following general working procedures shall be adopted. **</p> <ul style="list-style-type: none"> <li>• fully-enclosed or watertight grabs shall be used to minimise loss of sediment during the raising of loaded grabs through the water column;</li> <li>• the descent speed of grabs shall be controlled to minimise the seabed impact speed and to reduce the volume of over dredging;</li> <li>• barges shall be loaded carefully to avoid splashing of material;</li> <li>• all barges used for the transport of dredged materials shall be fitted with tight bottom seals in order to prevent leakage of material during loading and transport;</li> <li>• all barges shall be filled to a level which ensures that material does not spill over during loading and transport to the disposal site and that adequate freeboard is maintained to ensure that the decks are not washed by wave action;</li> <li>• the speed of trailer dredgers shall be controlled to prevent propeller wash from stirring up the sea bed sediments;</li> <li>• "rainbowing" sand fill from trailer dredgers shall not be permitted; and</li> <li>• the works shall cause no visible foam, oil, grease or litter or other objectionable matter to be present in the water within and adjacent to the dredging site and along the route to the disposal site.</li> </ul>	          
B8	<p>Cumulative impacts shall be assessed through EM&amp;A. Co-ordination with the EM&amp;A consultants for other projects to determine if any exceedances are caused by the other projects or by HEC's activities. Should monitoring results indicate exceedances at sensitive receivers due to HEC's activities, then the above described mitigation measures shall be implemented until impacts reduce to acceptable levels. **</p>	N/A
<b>NOISE</b>		
C1	<p>General noise mitigation measures shall be employed at all work sites throughout the construction phase.</p>	C
C2	<p>Mitigate against general construction noise during Sunday's and public holidays, either at source with portable noise barriers, or by rescheduling of some PME's to less sensitive time periods.</p>	N/A
C3	<p>Mitigate against night time noise from dredging equipment, with silencers or mufflers. **</p>	N/A
<b>LANDSCAPE &amp; VISUAL IMPACTS</b>		
D1	<p>The following mitigation measures shall be allowed for landscape and visual improvement:</p> <ul style="list-style-type: none"> <li>• Use rubble mound seawall along south and west edges of the reclamation to provide a more natural look.</li> <li>• Break the mass of main buildings by varying the height/division into smaller units.</li> <li>• Plant trees and vegetation for screening.</li> <li>• Adopt colour scheme to blend the buildings into the scenery.</li> </ul>	    

EM&A Log Ref.	Mitigation Measures	Implementation Status
<b>WASTE MANAGEMENT</b>		
E1	HEC to submit a Waste Management Plan for the construction phase to EPD. The Plan shall be verified by the IEC and shall describe the arrangements for avoidance, reuse, recovery and recycling, storage, collection, treatment and disposal of different categories of waste to be generated from the construction activities and shall take into account the recommendations of the EIA report.	C
<i>Dredging Waste</i>		
E2	All vessels for marine transportation of dredged sediment shall be fitted with tight fitting seals to their bottom openings to prevent leakage of materials. In addition, loading of barges and hoppers shall be controlled to prevent splashing of dredged material into the surrounding water, and barges or hoppers should under no circumstances be filled to a level which shall cause the overflowing of materials or polluted water during loading or transportation**	N/A
<i>Storage, Collection and Transport of Waste</i>		
E3	<ul style="list-style-type: none"> <li>Minimise windblown litter and dust during transportation by either covering trucks or transporting wastes in enclosed containers.</li> </ul>	C
	<ul style="list-style-type: none"> <li>Obtain the necessary waste disposal permits from the appropriate authorities, if they are required, in accordance with the Waste Disposal Ordinance (Cap.354), Waste Disposal (Chemical Waste) (General) Regulation (Cap.354), the Crown Land Ordinance (Cap 28), Dumping at Sea Ordinance (Cap 466) and Work Branch Technical Circular No. 22/92, Marine Disposal of Dredged Mud.</li> </ul>	C
	<ul style="list-style-type: none"> <li>Disposal of waste at Licensed sites;</li> </ul>	C
	<ul style="list-style-type: none"> <li>Develop procedures such as a ticketing system to facilitate tracking of marine mud and chemical waste, and to ensure that illegal disposal does not occur;</li> </ul>	N/A
	<ul style="list-style-type: none"> <li>Segregate and sort the waste materials into 3 categories:               <ul style="list-style-type: none"> <li>public fill (e.g. concrete and rubble) for re-use on-site or disposal at a public filling area;</li> <li>re-use and/or recycling waste (e.g. steel and other metals);</li> <li>waste which cannot be re-used and/or recycled (e.g. wood, glass and plastic) for landfill disposal.</li> <li>The sorting process shall be carefully monitored to avoid missing of the 3 categories. Different types of wastes shall be stockpiled and stored in different containers or skips to enhance re-use or recycling of materials and their proper disposal.</li> </ul> </li> <li>Maintain records of the quantities of wastes generated and disposed off-site for each category of waste.</li> </ul>	C
E4	Chemical waste that is produced, as defined by Schedule 1 of the Waste Disposal (Chemical Waste) (General) Regulation, shall be handled in accordance with the Code of Practice on the Packaging, Handling and Storage of Chemical Wastes	N/A
<b>LAND CONTAMINATION</b>		
F1	No land Contamination mitigation measures are required during the construction phase.	N/A
<b>MARINE ECOLOGY</b>		

<b>EM&amp;A Log Ref.</b>	<b>Mitigation Measures</b>	<b>Implementation Status</b>
G1	All percussive piling works shall be conducted on reclaimed land to avoid noise impact to marine mammals**	N/A
G2	All construction related vessels shall approach the extension site from the north and via the East Lamma Channel to avoid disturbance to the finless porpoise**	N/A
G3	Rubble mound seawall to the south and west edges of the reclamation to enhance recolonisation of marine organisms**	N/A
G4	Artificial Reefs of a volume not less than 400 m <sup>3</sup> shall be deployed in a location to be decided upon consultation with the Director of Agriculture and Fisheries to serve the purpose of an Additional Habitat Enhancement Measure.**	N/A
<b>FISHERIES</b>		
H1	No Fisheries-specific mitigation measures are required during the construction phase.	N/A
<b>RISK ASSESSMENT</b>		
I1	No risk mitigation measures are required during the construction phase.	N/A

## Remarks:

- \*\* - No dredging and reclamation work would be involved for L13 construction
- C - Compliance with mitigation measure
- NC - Non-compliance with mitigation measure
- N/A - Not Applicable

#	Act ID	Activity Name	Duration	Start	Finish	2025												2026												2027												2028												2029												2030												2031											
						J F M A M J J A S O N D												J F M A M J J A S O N D												J F M A M J J A S O N D												J F M A M J J A S O N D												J F M A M J J A S O N D												J F M A M J J A S O N D																							
1		<b>Contract No. 24-83005 Lamma Power Station Extension Civil and Building Works for Unit 13</b>	2281	01-Mar-25	29-May-31	Contract No. 24-83005																																																																																			
2		<b>KEY DATES</b>	2171	19-Jun-25	29-May-31	KEY DATES																																																																																			
3	KD1000	Tentative Date of Commencement (Hand over of Major Work Area)	0	19-Jun-25*		◆ Tentative Date of Commencement (Hand over of Major Work Area)																																																																																			
4	KD1010	Full mobilization of Site Team	0	02-Jul-25		◆ Full mobilization of Site Team																																																																																			
5	KD1020	Completion date for the whole of the works	0	30-May-30*		◆ Completion date for the whole of the works																																																																																			
6	KD1030	Defect Liability Period	0	29-May-31		◆ Defect Liability Period																																																																																			
7		<b>SITE POSSESSION DATE &amp; COMPLETION DATE</b>	1886	01-Apr-25	31-May-30	SITE POSSESSION DATE & COMPLETION DATE																																																																																			
8		<b>WORKS AREA ACCESS DATE</b>	897	01-Apr-25	15-Sep-27	WORKS AREA ACCESS DATE																																																																																			
9	AD1010	Area G1 - L13 MSB & HRSG	0	19-Jun-25*		◆ Area G1 - L13 MSB & HRSG																																																																																			
10	AD1020	Area G2A - L13 MSB & HRSG	0	19-Jun-25*		◆ Area G2A - L13 MSB & HRSG																																																																																			
11	AD1030	Area G2B - L13 MSB & HRSG	0	19-Jun-25*		◆ Area G2B - L13 MSB & HRSG																																																																																			
12	AD1040	Area G3 - L13 MSB & HRSG	0	19-Jun-25*		◆ Area G3 - L13 MSB & HRSG																																																																																			
13	AD1050	Area G3A - L13 MSB & HRSG	0	30-Jun-25*		◆ Area G3A - L13 MSB & HRSG																																																																																			
14	AD1060	Area G1A - CW Outdoor Cooler Pump	0	19-Jun-25*		◆ Area G1A - CW Outdoor Cooler Pump																																																																																			
15	AD1070	Area G4 - CW Culvert & External Works	0	19-Jun-25*		◆ Area G4 - CW Culvert & External Works																																																																																			
16	AD1080	Area G5 - CW Culvert & External Works	0	19-Jun-25*		◆ Area G5 - CW Culvert & External Works																																																																																			
17	AD1090	Area G6 (Stage 1) (Plan) - L13 GRS	0	15-Jul-25*		◆ Area G6 (Stage 1) (Plan) - L13 GRS																																																																																			
18	AD1100	Area G6 (Stage 2) (Plan) - L13 GRS	0	15-Sep-27*		◆ Area G6 (Stage 2) (Plan) - L13 GRS																																																																																			
19	AD1110	Area G7A (Stage 1) (Plan) - L13 GRS	0	15-Jul-25*		◆ Area G7A (Stage 1) (Plan) - L13 GRS																																																																																			
20	AD1120	Area G7A (Stage 2) (Plan) - L13 GRS	0	15-Sep-27*		◆ Area G7A (Stage 2) (Plan) - L13 GRS																																																																																			
21	AD1130	Area G7B (Stage 1) (Plan) - L13 GRS	0	15-Jul-25*		◆ Area G7B (Stage 1) (Plan) - L13 GRS																																																																																			
22	AD1140	Area G7B (Stage 2) (Plan) - L13 GRS	0	15-Sep-27*		◆ Area G7B (Stage 2) (Plan) - L13 GRS																																																																																			
23	AD1150	Area G8 (Stage 1) (Plan) - L13 GRS	0	15-Jul-25*		◆ Area G8 (Stage 1) (Plan) - L13 GRS																																																																																			
24	AD1160	Area G8 (Stage 2) (Plan) - L13 GRS	0	15-Sep-27*		◆ Area G8 (Stage 2) (Plan) - L13 GRS																																																																																			
25	AD1170	Area G10 - External Works	0	01-Oct-26*		◆ Area G10 - External Works																																																																																			
26	AD1180	Area G11 - APX Trenching Works at LMX	0	01-Jul-27*		◆ Area G11 - APX Trenching Works at LMX																																																																																			
27	AD1190	Area G12 - External Works	0	01-Jan-27*		◆ Area G12 - External Works																																																																																			
28	AD1200	Area G13 (Plan) - No. 5 CW Pump Equipment Room	0	15-Jul-25*		◆ Area G13 (Plan) - No. 5 CW Pump Equipment Room																																																																																			
29	AD1210	Area G14 - Light Oil Tank A&A And Associated Trenching Works	0	01-Oct-25*		◆ Area G14 - Light Oil Tank A&A And Associated Trenching Works																																																																																			
30	AD1220	Area G15 - 275kV s/s II	0	01-Oct-25*		◆ Area G15 - 275kV s/s II																																																																																			
31	AD1230	Area G16 (Plan) - No. 5 CW Intake	0	15-Jul-25*		◆ Area G16 (Plan) - No. 5 CW Intake																																																																																			
32	AD1240	Area G16A (Plan) - No. 5 CW Intake	0	15-Jul-25*		◆ Area G16A (Plan) - No. 5 CW Intake																																																																																			
33	AD1250	Area G17A - Shunt Reactor Compound No. 7 & 8	0	01-Jan-27*		◆ Area G17A - Shunt Reactor Compound No. 7 & 8																																																																																			
34	AD1260	Area G17B - Shunt Reactor Compound No. 7 & 8	0	01-Jan-27*		◆ Area G17B - Shunt Reactor Compound No. 7 & 8																																																																																			
35	AD1270	Area G18 (Plan) - Site Toilet	0	15-Jul-25*		◆ Area G18 (Plan) - Site Toilet																																																																																			
36	AD1280	Area G22 (Plan) - Demolition Work of Urea Shelter	0	15-Jul-25*		◆ Area G22 (Plan) - Demolition Work of Urea Shelter																																																																																			
37	AD1290	Area G19 - ACB Modification Works	0	02-Jun-25*		◆ Area G19 - ACB Modification Works																																																																																			
38	AD1300	Area G20 (Plan) - No.5 Chimney	0	15-Jul-25*		◆ Area G20 (Plan) - No.5 Chimney																																																																																			
39	AD1310	Area G21 - L11 Inspection Manhole For CW Culvert	0	01-Sep-25*		◆ Area G21 - L11 Inspection Manhole For CW Culvert																																																																																			
40	AD1320	Area G23 - L10 MSB (Shower Pit)	0	01-Sep-25*		◆ Area G23 - L10 MSB (Shower Pit)																																																																																			
41	AD1330	Area G24 - L11 MSB (Shower Pit)	0	01-Nov-25*		◆ Area G24 - L11 MSB (Shower Pit)																																																																																			
42	AD1340	Area G26 - DG Store	0	02-Jun-25*		◆ Area G26 - DG Store																																																																																			
43	AD1350	Area B1A - External Works	0	01-Jan-27*		◆ Area B1A - External Works																																																																																			
44	AD1360	Area B1 - L13 Superstructure Storage Area	0	01-Apr-25*		◆ Area B1 - L13 Superstructure Storage Area																																																																																			
45	AD1370	Area B2 - L13 Superstructure Storage Area	0	01-Apr-25*		◆ Area B2 - L13 Superstructure Storage Area																																																																																			
46	AD1380	Area D2 - L13 Superstructure Storage Area	0	19-Jun-25*		◆ Area D2 - L13 Superstructure Storage Area																																																																																			
47	AD1390	Area D7 - L13 Superstructure Storage Area	0	23-Apr-25*		◆ Area D7 - L13 Superstructure Storage Area																																																																																			
48	AD1400	Area D8 (Plan) - L13 Superstructure Storage Area	0	15-Jul-25*		◆ Area D8 (Plan) - L13 Superstructure Storage Area																																																																																			
49		<b>SECTION COMPLETION DATE</b>	1219	19-May-25	18-Sep-28	SECTION COMPLETION DATE																																																																																			
50	SC1010	Sect Ai - Supporting Structures for Overhead Cranes of L13 MSB incl. roof str except deferred wk	395	19-Jun-25*	18-Jul-26	◆ Sect Ai - Supporting Structures for Overhead Cranes of L13 MSB incl. roof str except deferred wk																																																																																			
51	SC1020	Sect Aii - Ext. Wks incl. CW Outlet Culvert Pipes	395	19-Jun-25*	18-Jul-26	◆ Sect Aii - Ext. Wks incl. CW Outlet Culvert Pipes																																																																																			
52	SC1030	Sect Bi - Ext. Wk Incl. CW Inlet Culvert Pipes	306	19-Jun-25*	20-Apr-26	◆ Sect Bi - Ext. Wk Incl. CW Inlet Culvert Pipes																																																																																			
53	SC1040	Sect Bii - L13 Gas Rec. St Eqpt Rm - Stage 1 (Plan)	306	15-Jul-25*	16-May-26	◆ Sect Bii - L13 Gas Rec. St Eqpt Rm - Stage 1 (Plan)																																																																																			
54	SC1060	Sect Ci - Southern Part of L13 HRSG and its Surrounding	334	19-Jun-25*	18-May-26	◆ Sect Ci - Southern Part of L13 HRSG and its Surrounding																																																																																			
55	SC1070	Sect Cii - Remaining Northern Part of L13 HRSG Area and its Surrounding	410	19-Jun-25*	02-Aug-26	◆ Sect Cii - Remaining Northern Part of L13 HRSG Area and its Surrounding																																																																																			
56	SC1090	Sect Ciii - G/F of L13 MSB incl. Condenser Pit, etc fdn GL 13-B ~ C and 13-1 ~ 6 for installation of condenser	426	19-Jun-25*	18-Aug-26	◆ Sect Ciii - G/F of L13 MSB incl. Condenser Pit, etc fdn GL 13-B ~ C and 13-1 ~ 6 for installation of condenser																																																																																			
57	SC1100	Sect Civ - No.5 CW Intake L13 Pump Chamber, Drum Screen Chamber, and Penstock Chamber (Plan)	334	15-Jul-25*	13-Jun-26	◆ Sect Civ - No.5 CW Intake L13 Pump Chamber, Drum Screen Chamber, and Penstock Chamber (Plan)																																																																																			
58	SC1110	Sect Di - CW Pump Equipment Room No. 5 and Its Surrounding (Plan)	699	15-Jul-25*	13-Jun-27	◆ Sect Di - CW Pump Equipment Room No. 5 and Its Surrounding (Plan)																																																																																			
59	SC1120	Sect Dii - No. 5 CW Intake Remaining Works (Plan)	700	15-Jul-25*	14-Jun-27	◆ Sect Dii - No. 5 CW Intake Remaining Works (Plan)																																																																																			
60	SC1130	Sect Diii - 275kV Switch St. Phase II A & A Works	365	01-Oct-25*	30-Sep-26	◆ Sect Diii - 275kV Switch St. Phase II A & A Works																																																																																			
61	SC1140	Sect Div - Plinth and Pipe Support for LMX Light Oil Tank Farm	396	01-Oct-25*	31-Oct-26	◆ Sect Div - Plinth and Pipe Support for LMX Light Oil Tank Farm																																																																																			
62	SC1150	Sect Dv - LMX Dangerous Goods Store Alterations and Additions Works	122	02-Jun-25*	01-Oct-25	◆ Sect Dv - LMX Dangerous Goods Store Alterations and Additions Works																																																																																			
63	SC1160	Sect Ei - Whole of L13 MSB incl. Pipe and Cable Rack along South Facade with Udr Grd Utilities	487	19-Jun-25*	18-Oct-26	◆ Sect Ei - Whole of L13 MSB incl. Pipe and Cable Rack along South Facade with Udr Grd Utilities																																																																																			

█ Actual Work  
█ Remaining Work  
█ Critical Remaining Work  
◆ Milestone  
 Summary

TASK filter: All Activities

**Lamma Power Station Extension  
Civil and Building Works for Unit 13  
Contract No. 24-83005  
Master Programme**

Date	Revision	Checked	Approved





















